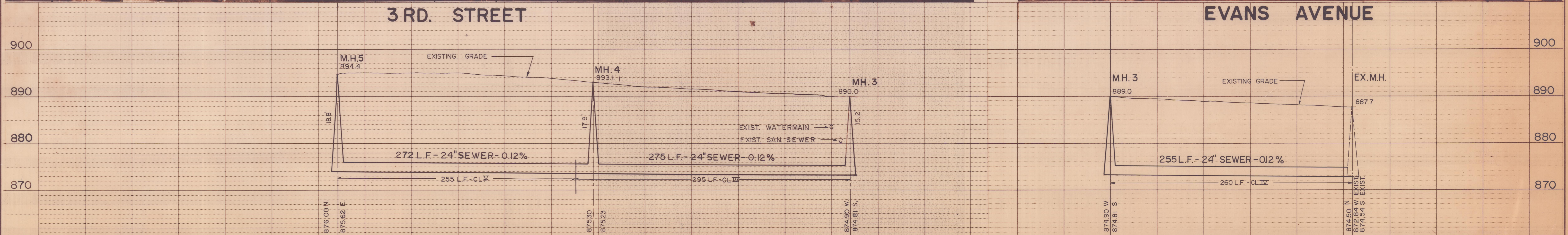
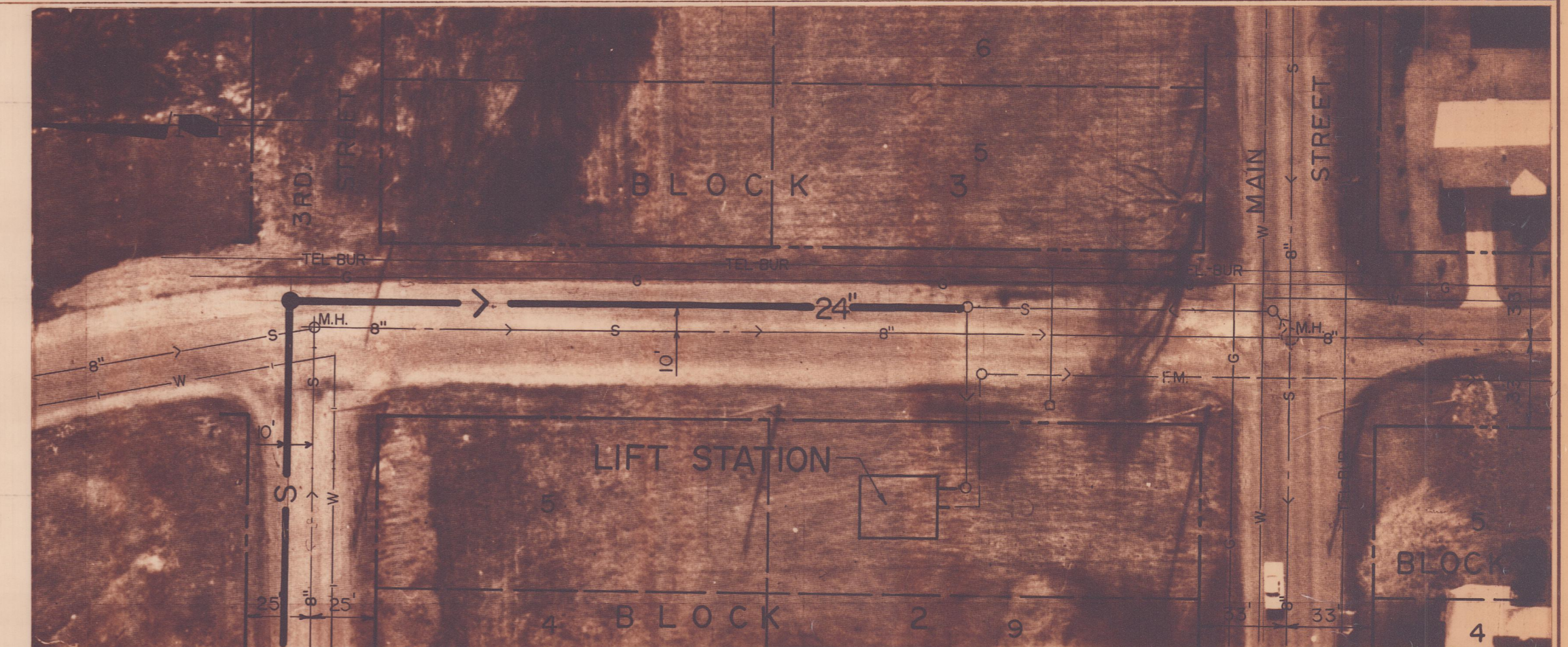


BENCHMARK:
 Top nut of hydrant @ corner of
 Main & Evans.
 Elevation: 889.30

Sanitary Sewer 18", 21", & 24" RCP
 Sanitary Sewer 6", 8", & 12" PVC Pipe
 Sanitary Sewer Service 4" & 6" CISP
 Foremain 10" DIP



THE LOCATIONS OF EXISTING UNDERGROUND UTILITIES ARE SHOWN IN AN APPROXIMATE WAY ONLY. THE EXCAVATING CONTRACTOR SHALL DETERMINE THE EXACT LOCATION OF ALL EXISTING UTILITIES BEFORE COMMENCING WORK. HE AGREES TO BE FULLY RESPONSIBLE FOR ANY AND ALL DAMAGES WHICH MIGHT BE OCCASIONED BY HIS FAILURE TO EXACTLY LOCATE AND PRESERVE ANY AND ALL UNDERGROUND UTILITIES.

NO.	DATE	BY	REMARKS
A	1-4-82	T.L.C.	AS BUILT

DESIGNED L.S.	CHECKED P.W.P.
DRAWN R.L.C.	APPROVED L.G.S.
DATE	COMM.

I HEREBY CERTIFY THAT THIS PLAN WAS PREPARED BY ME OR UNDER MY DIRECT SUPERVISION AND THAT I AM A DULY REGISTERED PROFESSIONAL ENGINEER UNDER THE LAWS OF THE STATE OF MINNESOTA.

Lyle Swenson

DATE 10/17/80 REG. NO. 7411

McCOMBS-KNUTSON ASSOCIATES, INC.
 CONSULTING ENGINEERS ■ LAND SURVEYORS ■ SITE PLANNERS
 MINNEAPOLIS AND HUTCHINSON, MINNESOTA

ELK RIVER INTERCEPTOR
 ELK RIVER, MINNESOTA

SCALE HORIZ. 1"=50' VERT. 1"=10'
BOOK PAGE
FILE NO. 5103

PLAN AND PROFILE

SHEET	REV.
2	A
OF	9