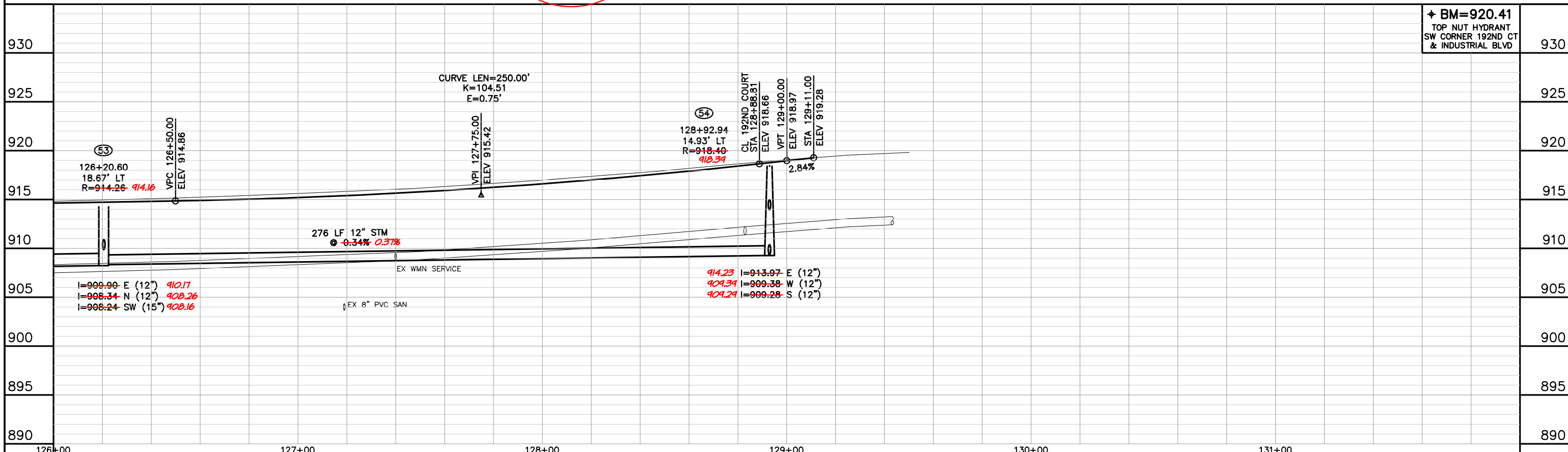
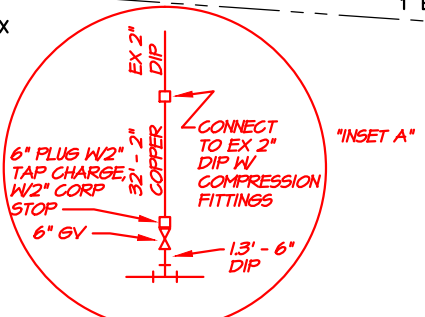


# RECORD DRAWING

This record drawing has been prepared, in part, based upon information furnished by others. While this information is believed to be reliable, the DESIGN PROFESSIONAL cannot assure its accuracy, and thus is not responsible for the accuracy of this record drawing or for any errors or omissions which may have been incorporated into it as a result. Those relying on this record document are advised to obtain independent verification of its accuracy before applying it for any purpose.

Date: 10/10/12 By: CODY HOLMES - KGA



± BM=920.41  
TOP NUT HYDRANT  
SW CORNER 192ND CT  
& INDUSTRIAL BLVD

<p>©Bolton &amp; Menk, Inc. 2013, All Rights Reserved H:\ELKR\13103354\Record Drawings\EP2\RCp03001.dwg 1/11/13 3:27 pm</p>	<p>HORIZ. SCALE 0 20 40 FEET VERT. SCALE 0 5 10 FEET</p>	<p>I HEREBY CERTIFY THAT THIS PLAN, SPECIFICATION, OR REPORT WAS PREPARED BY ME OR UNDER MY DIRECT SUPERVISION AND THAT I AM A DULY LICENSED PROFESSIONAL ENGINEER UNDER THE LAWS OF THE STATE OF MINNESOTA.</p> <p>DESIGNED: N. HUETTL DRAWN: J. COOK CHECKED: K. BITTNER</p> <p>KEVIN BITTNER, P.E. LIC. NO. 21814 DATE 6/8/2011</p>	<p><b>BOLTON &amp; MENK, INC.</b> Consulting Engineers &amp; Surveyors</p> <p>MANKATO, MN FAIRMONT, MN SLEEPY EYE, MN WILLMAR, MN BURNSVILLE, MN CHASKA, MN RAMSEY, MN MAPLEWOOD, MN AMES, IA</p>	<table border="1"> <tr> <th>REV.</th> <th>BY</th> <th>DATE</th> </tr> <tr> <td> </td> <td> </td> <td> </td> </tr> </table>	REV.	BY	DATE				<p>CITY OF ELK RIVER, MINNESOTA 2011 STREET IMPROVEMENTS INDUSTRIAL BLVD - STREET &amp; UTILITY PLAN 126+00-131+00 SAP 204-125-002</p>	<p>SHEET 9.4</p>
REV.	BY	DATE										