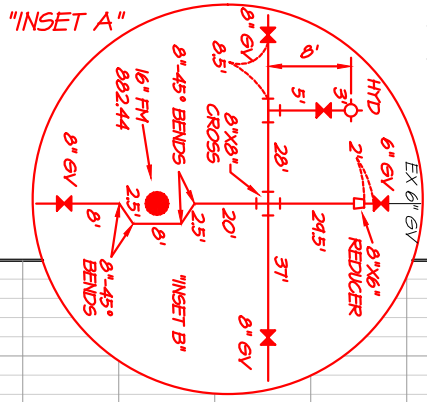


326 2ND ST
25' - 4" PVC SAN SERV
CONNECT TO EX 6" CEMENT PIPE
1490 WYE

319 2ND ST
26' - 4" PVC SAN SERV
35' - 1" COPPER WAT SERV
1430 WYE

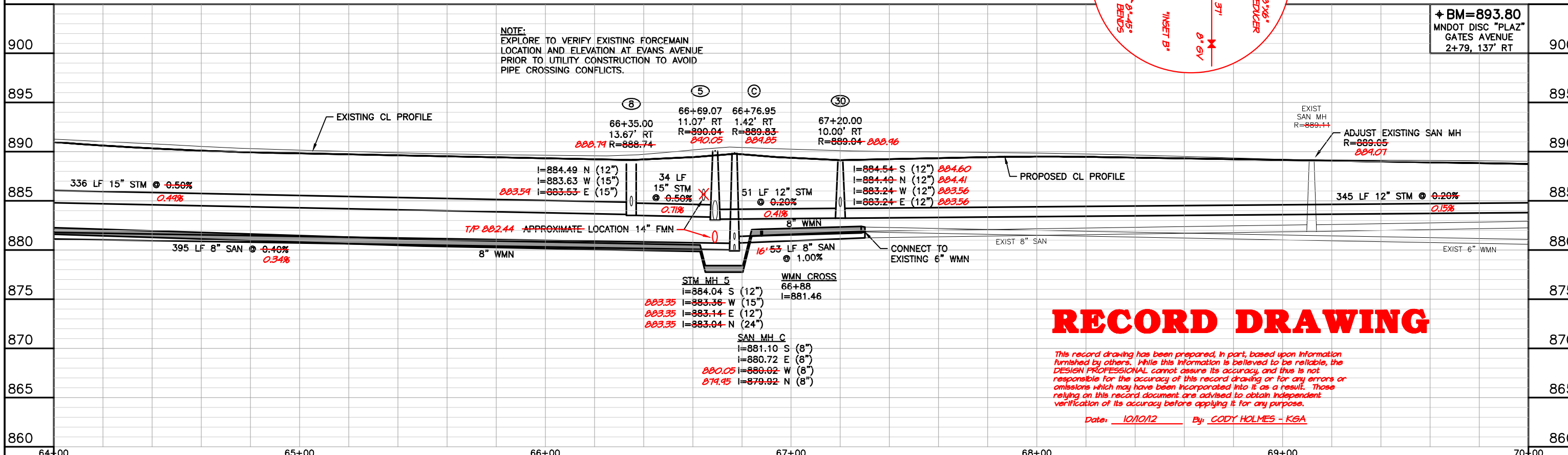
129 EVANS AVE NW
33' - 4" PVC SAN SERV
38' - 1" COPPER WAT SERV
0440 WYE

F&I:
1 EA 8"x6" REDUCER
1 EA 6" GV & BOX
1 EA 6" SLEEVE
3 LF 7' LF 6" WMN
4 EA 8"x45" BENDS (VERTICAL)



NOTE:
EXPLORE TO VERIFY EXISTING FORCEMAIN
LOCATION AND ELEVATION AT EVANS AVENUE
PRIOR TO UTILITY CONSTRUCTION TO AVOID
PIPE CROSSING CONFLICTS.

+ BM=893.80
MNDOT DISC "PLAZ"
GATES AVENUE
2+79, 137' RT



RECORD DRAWING

This record drawing has been prepared, in part, based upon information furnished by others. While this information is believed to be reliable, the DESIGN PROFESSIONAL cannot assure its accuracy, and thus is not responsible for the accuracy of this record drawing or for any errors or omissions which may have been incorporated into it as a result. Those relying on this record document are advised to obtain independent verification of its accuracy before applying it for any purpose.

Date: 10/10/12 By: CODY HOLMES - KGA