

RECORD DRAWING

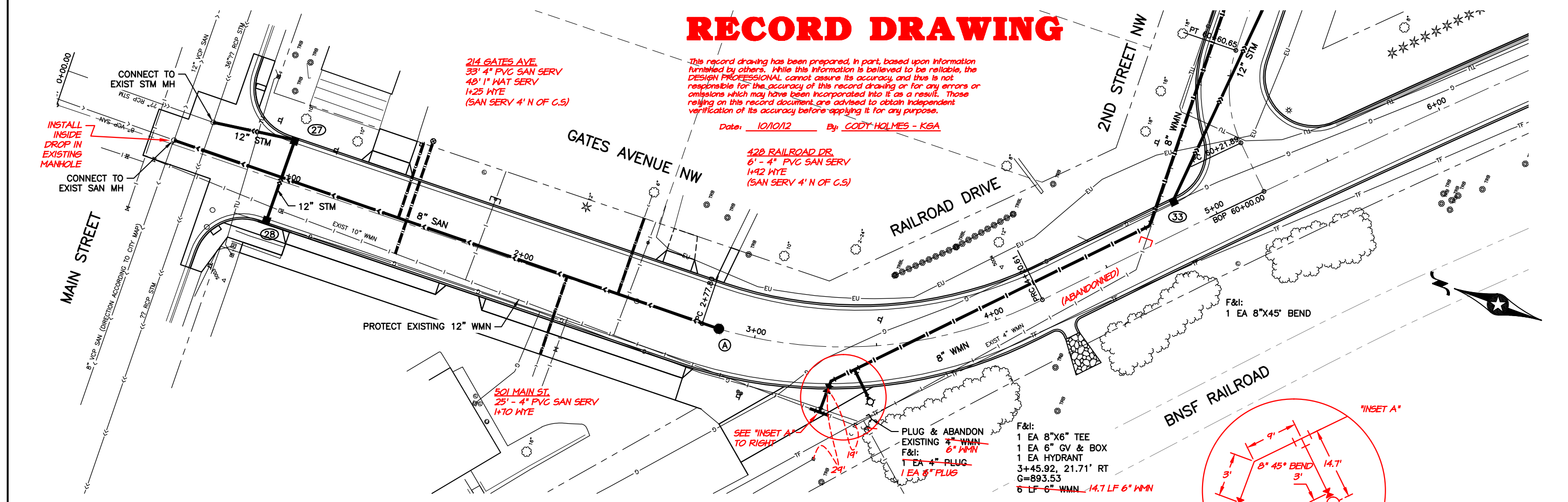
This record drawing has been prepared, in part, based upon information furnished by others. While this information is believed to be reliable, the DESIGN PROFESSIONAL cannot assure its accuracy, and thus is not responsible for the accuracy of this record drawing or for any errors or omissions which may have been incorporated into it as a result. Those relying on this record document are advised to obtain independent verification of its accuracy before applying it for any purpose.

Date: 10/10/12 By: CODY HOLMES - KGA

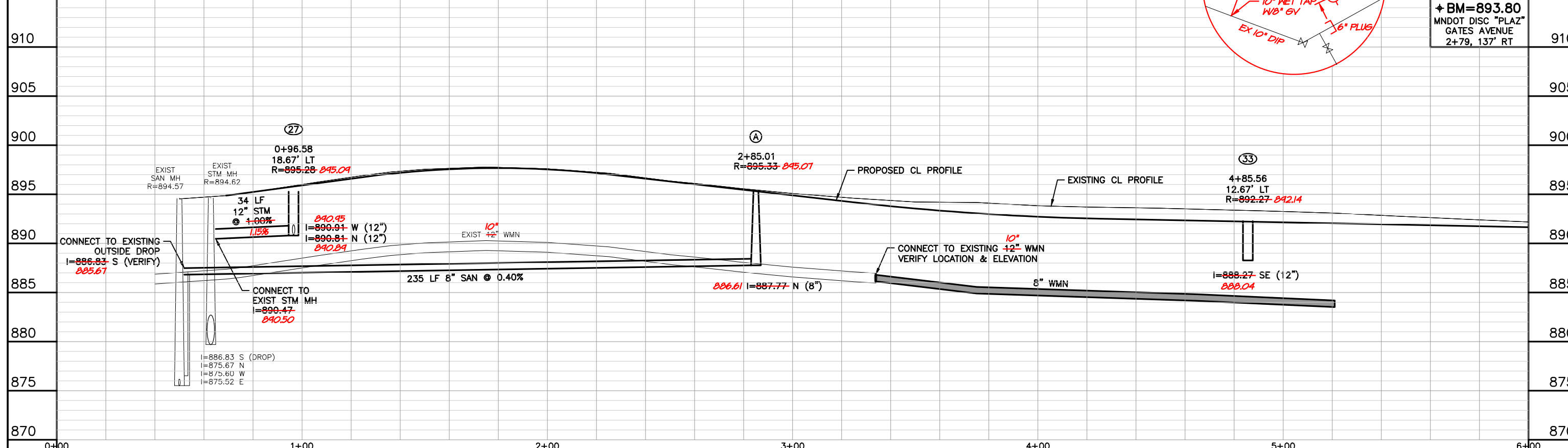
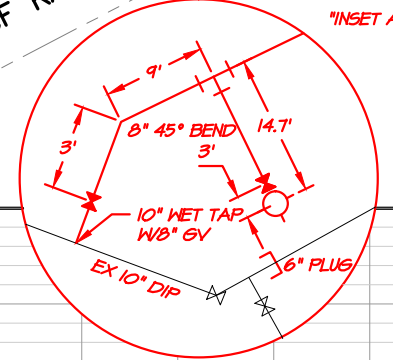
422 RAILROAD DR.
6" - 4" PVC SAN SERV
1+92 WYE
(SAN SERV 4' N OF C.S.)

214 GATES AVE.
33' 4" PVC SAN SERV
48' 1" WAT SERV
1+25 WYE
(SAN SERV 4' N OF C.S.)

501 MAIN ST.
25' - 4" PVC SAN SERV
1+70 WYE



- F&I:
- 1 EA 8"x6" TEE
 - 1 EA 6" GV & BOX
 - 1 EA HYDRANT
 - 3+45.92, 21.71' RT
 - G=893.53
 - ~~6 LF 6" WMN~~ 14.7 LF 6" WMN



± BM=893.80
MNDOT DISC "PLAZ"
GATES AVENUE
2+79, 137' RT

<p>0 20 40 SCALE FEET</p> <p>0 5 10 SCALE FEET</p>	<p>I HEREBY CERTIFY THAT THIS PLAN, SPECIFICATION, OR REPORT WAS PREPARED BY ME OR UNDER MY DIRECT SUPERVISION AND THAT I AM A DULY LICENSED PROFESSIONAL ENGINEER UNDER THE LAWS OF THE STATE OF MINNESOTA.</p> <p style="font-size: small;">DESIGNED: N. HUETTL DRAWN: J. COOK CHECKED: K. BITTNER</p>	<p>BOLTON & MENK, INC. Consulting Engineers & Surveyors</p> <p style="font-size: x-small;">MANKATO, MN FAIRMONT, MN SLEEPY EYE, MN WILLMAR, MN BURNSVILLE, MN CHASKA, MN RAMSEY, MN MAPLEWOOD, MN AMES, IA</p>	<p>REV. BY DATE</p>	<p>CITY OF ELK RIVER, MINNESOTA 2011 STREET IMPROVEMENTS GATES AVE NW-RAILROAD DR- UTILITY PLAN 0+00 - 6+00</p>	<p>SHEET 12.1</p>
--	--	---	---------------------	--	------------------------------

©Bolton & Menk, Inc. 2013, All Rights Reserved
H:\ELKR\13103354\Record Drawings\EP\RCP01001-UTL.dwg 2/12/13 1:04 pm