

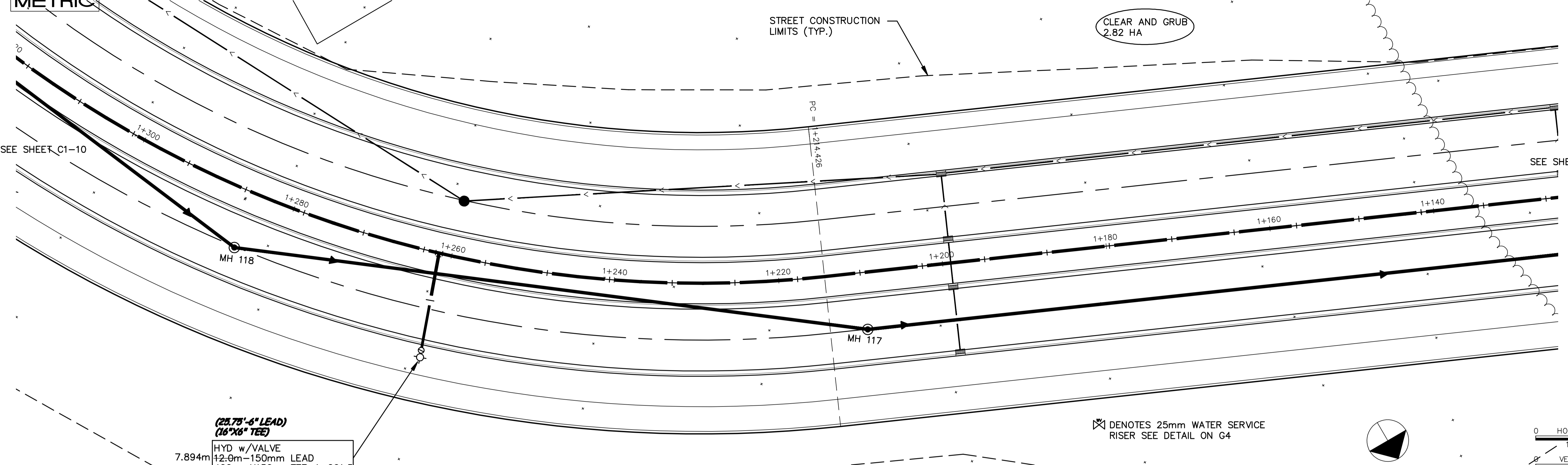
# TYLER STREET

STREET CONSTRUCTION LIMITS (TYP.)

CLEAR AND GRUB  
2.82 HA

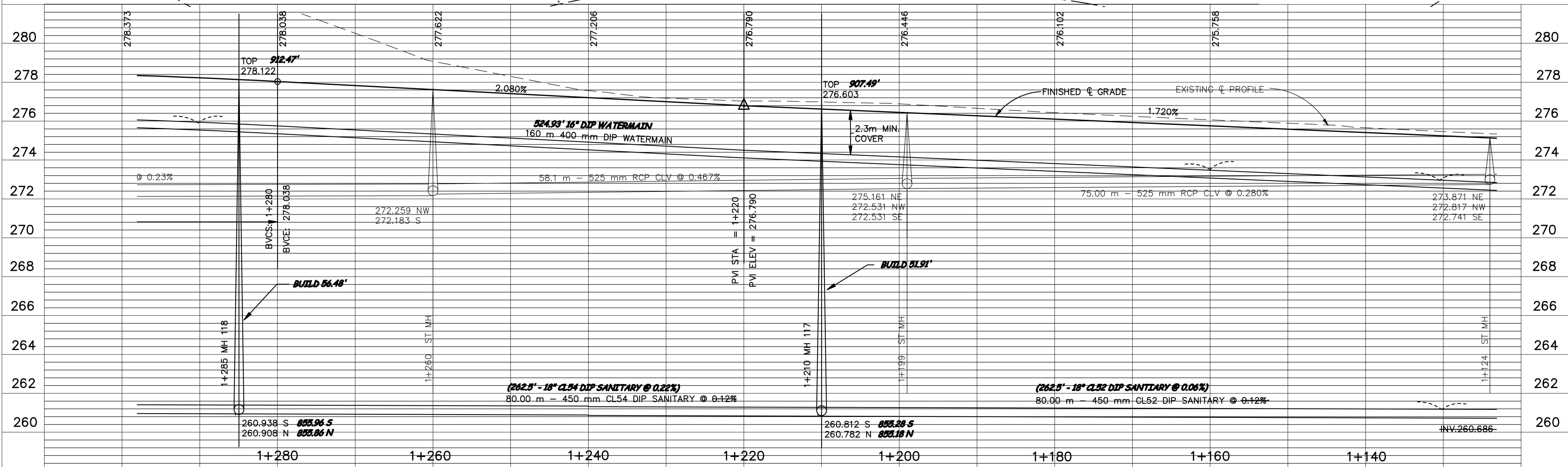
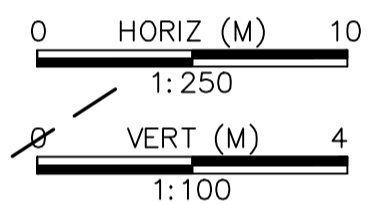
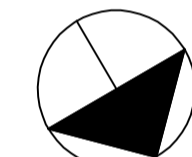
SEE SHEET C1-10

SEE SHEET C1-8



**(25.75'-6\"/>**

⊠ DENOTES 25mm WATER SERVICE RISER SEE DETAIL ON G4



DESIGNED BY: AB JOB DATE: MARCH 1998  
 DRAWN BY: [Signature] JOB NUMBER: 800110J  
 APPROVED: [Signature] CAD DATE:  
 CAD FILE: March 11, 1999 11:01:39 a.m.  
 800110j\Draws\Tyler\_BASE\08.DWG

I HEREBY CERTIFY THAT THIS PLAN, SPECIFICATION, OR REPORT WAS PREPARED BY ME OR UNDER MY DIRECT SUPERVISION AND THAT I AM A DULY REGISTERED PROFESSIONAL ENGINEER UNDER THE LAWS OF THE STATE OF MINNESOTA.  
 DATE 10/15/98 REG. NO. 15316

NO.	DATE	BY	REVISION DESCRIPTION

1326 ENERGY PARK DRIVE  
 ST. PAUL, MINNESOTA 55108  
 (612) 644-4389

**Howard R. Green Company**  
 CONSULTING ENGINEERS

**CITY OF ELK RIVER**  
 EASTERN AREA  
 PHASE I IMPROVEMENTS

**STREET AND UTILITY IMPROVEMENTS**  
 TYLER STREET  
 1+130 TO 1+290

SHEET NO.  
**C1-9**