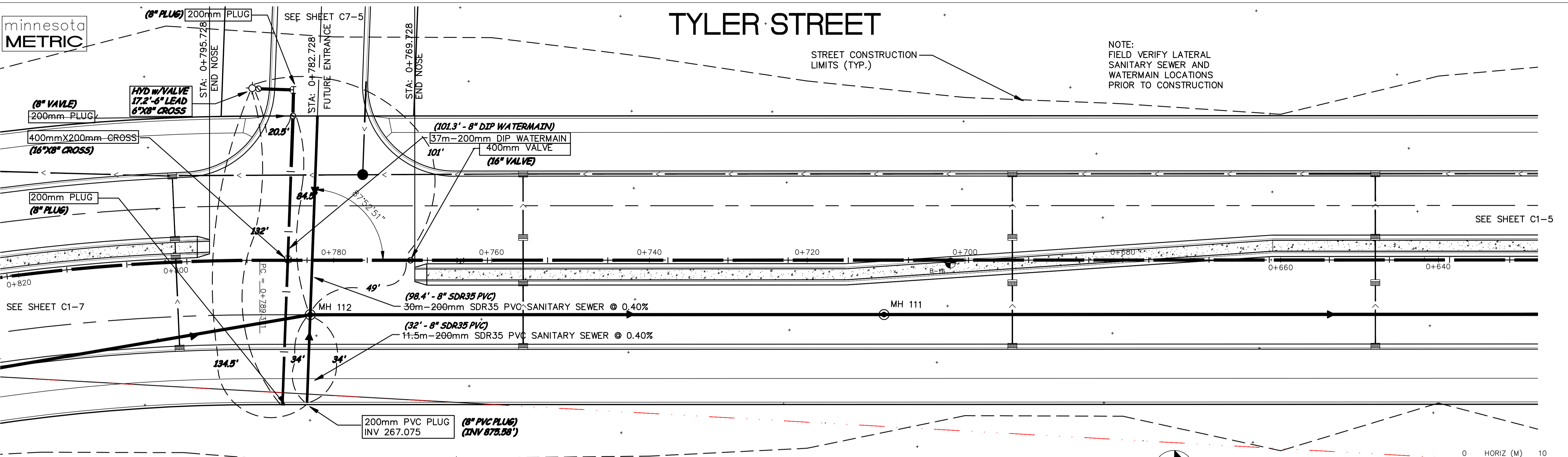


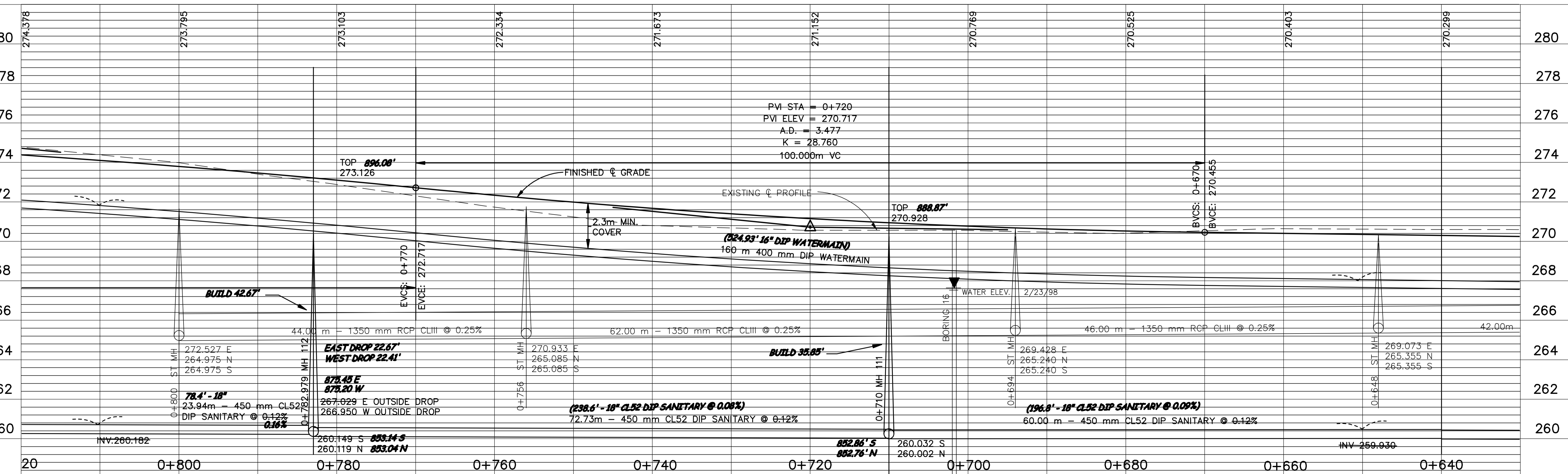
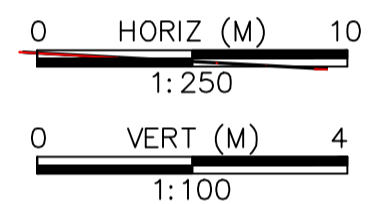
minnesota  
METRIC

# TYLER STREET

NOTE:  
FIELD VERIFY LATERAL  
SANITARY SEWER AND  
WATERMAIN LOCATIONS  
PRIOR TO CONSTRUCTION



⊗ DENOTES 25mm WATER SERVICE RISER SEE DETAIL ON G4



DESIGNED BY: AB JOB DATE: MARCH 1998  
 DRAWN BY: [Signature] JOB NUMBER: 800110J  
 APPROVED: \_\_\_\_\_ CAD DATE: \_\_\_\_\_  
 CAD FILE: March 02, 1999 11:19:58 a.m.  
 800110j\Draws\Tyler\_BASE\05.DWG

I HEREBY CERTIFY THAT THIS PLAN, SPECIFICATION, OR REPORT WAS PREPARED BY ME OR UNDER MY DIRECT SUPERVISION AND THAT I AM A DULY REGISTERED PROFESSIONAL ENGINEER UNDER THE LAWS OF THE STATE OF MINNESOTA.  
 DATE: \_\_\_\_\_ REG. NO.: 15316

NO.	DATE	BY	REVISION DESCRIPTION
1	11/20/98	LK	MANHOLE STATIONING
1	1-21-99	PH	REVISED INTERSECTION/DELETED HYD
1	1-21-99	PH	DELETED MH 112B
2	3-2-99	LK	REVISED THE WEST INVERT INTO SAN MH 112

1326 ENERGY PARK DRIVE  
 ST. PAUL, MINNESOTA 55108  
 (612) 644-4389  
**Howard R. Green Company**  
 CONSULTING ENGINEERS

CITY OF ELK RIVER  
 EASTERN AREA  
 PHASE I IMPROVEMENTS

STREET AND UTILITY IMPROVEMENTS  
 TYLER STREET  
 0+650 TO 0+810

SHEET NO.  
**C1-6**