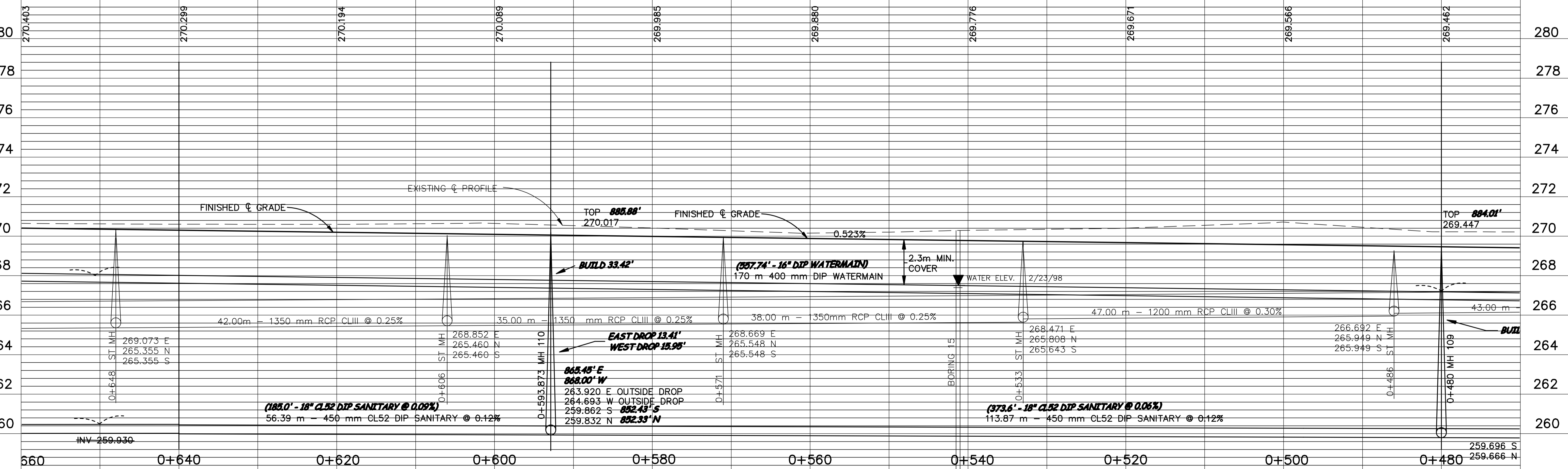
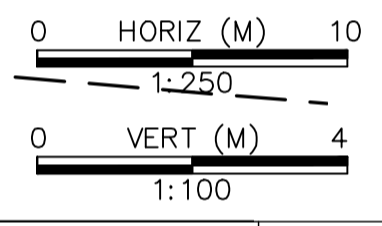
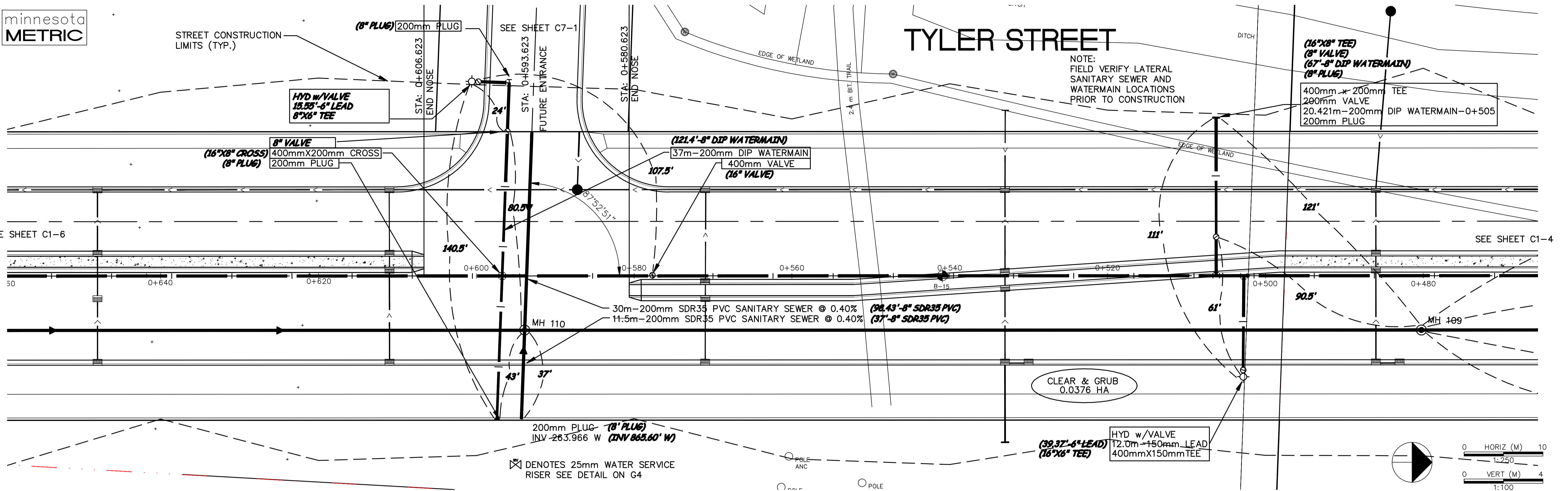


TYLER STREET

NOTE:
FIELD VERIFY LATERAL
SANITARY SEWER AND
WATERMAIN LOCATIONS
PRIOR TO CONSTRUCTION



DESIGNED BY: AB JOB DATE: MARCH 1998
 DRAWN BY: [Signature] JOB NUMBER: 800110J
 APPROVED: [Signature] CAD DATE:
 CAD FILE: March 02, 1999 11:26:02 a.m.
 800110j\Draws\Tyler_BASE\04.DWG

I HEREBY CERTIFY THAT THIS PLAN, SPECIFICATION,
 OR REPORT WAS PREPARED BY ME OR UNDER MY DIRECT
 SUPERVISION AND THAT I AM A DULY REGISTERED
 PROFESSIONAL ENGINEER UNDER THE LAWS OF THE
 STATE OF MINNESOTA.
 DATE: _____ REG. NO.: 15316

NO.	DATE	BY	REVISION DESCRIPTION
1	11/20/98	LK	MANHOLE STATIONING
2	1-21-99	PH	REVISED INTERSECTION/DELETED HYD/MH 108B
3	2-15-99	LK	ADDED WM STUB GOING TO ELK RIVER BUSINESS PARK
4	3-2-99	LK	REV. WEST INV INTO SAN MH 110

1326 ENERGY PARK DRIVE
 ST. PAUL, MINNESOTA 55108
 (612) 644-4389

Howard R. Green Company
 CONSULTING ENGINEERS

CITY OF ELK RIVER
 EASTERN AREA
 PHASE I IMPROVEMENTS

STREET AND UTILITY IMPROVEMENTS
 TYLER STREET
 0+480 TO 0+650

SHEET NO.
C1-5