



⊗ DENOTES 25mm WATER SERVICE RISER SEE DETAIL ON G4

STREET CONSTRUCTION LIMITS (TYP.)

NOTE: CONTRACTOR SHALL VERIFY LOCATION OF EXISTING GAS LINES PRIOR TO SANITARY SEWER-CONSTRUCTION

TYLER STREET

(8" PLUG) 200mm PLUG * 271.24
(INV. 891.78) INV 271.816

(37.7'-8" SDR35 PVC)

11.5m-200mm SDR35 PVC SANITARY @ 0.40%

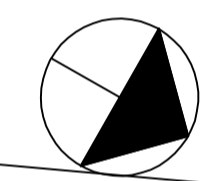
MH 412

MH 411

CLEAR AND GRUB 0.4420 HA

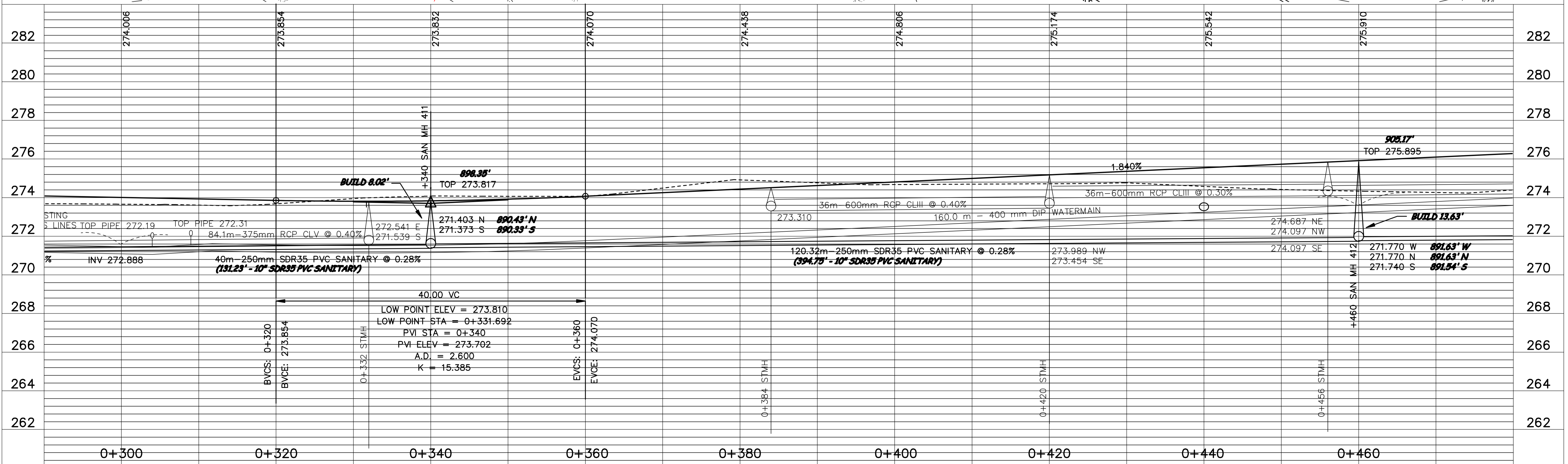
0 HORIZ (M) 10
1:250

0 VERT (M) 4
1:100



SEE SHEET C1-19

SEE SHEET C1-21



DESIGNED BY: AB JOB DATE: MARCH 1998
 DRAWN BY: [Signature] JOB NUMBER: 800110J
 APPROVED: CAD DATE:
 CAD FILE: February 08, 1999 11:28:34 a.m.
 800110j\Draws\NORTH_TYLER\03.DWG

I HEREBY CERTIFY THAT THIS PLAN, SPECIFICATION, OR REPORT WAS PREPARED BY ME OR UNDER MY DIRECT SUPERVISION AND THAT I AM A DULY REGISTERED PROFESSIONAL ENGINEER UNDER THE LAWS OF THE STATE OF MINNESOTA.
 DATE: _____ REG. NO.: 15316

NO.	DATE	BY	REVISION DESCRIPTION
1	1-22-99	PH	DELETED WM C.O. NO.1
1	1-22-99	PH	DELETED MH 412A

1326 ENERGY PARK DRIVE
ST. PAUL, MINNESOTA 55108
(612) 644-4389

Howard R. Green Company
CONSULTING ENGINEERS

CITY OF ELK RIVER
EASTERN AREA
PHASE I IMPROVEMENTS

STREET AND UTILITY IMPROVEMENTS
TYLER STREET
0+300 TO 0+460

SHEET NO.
C1-20