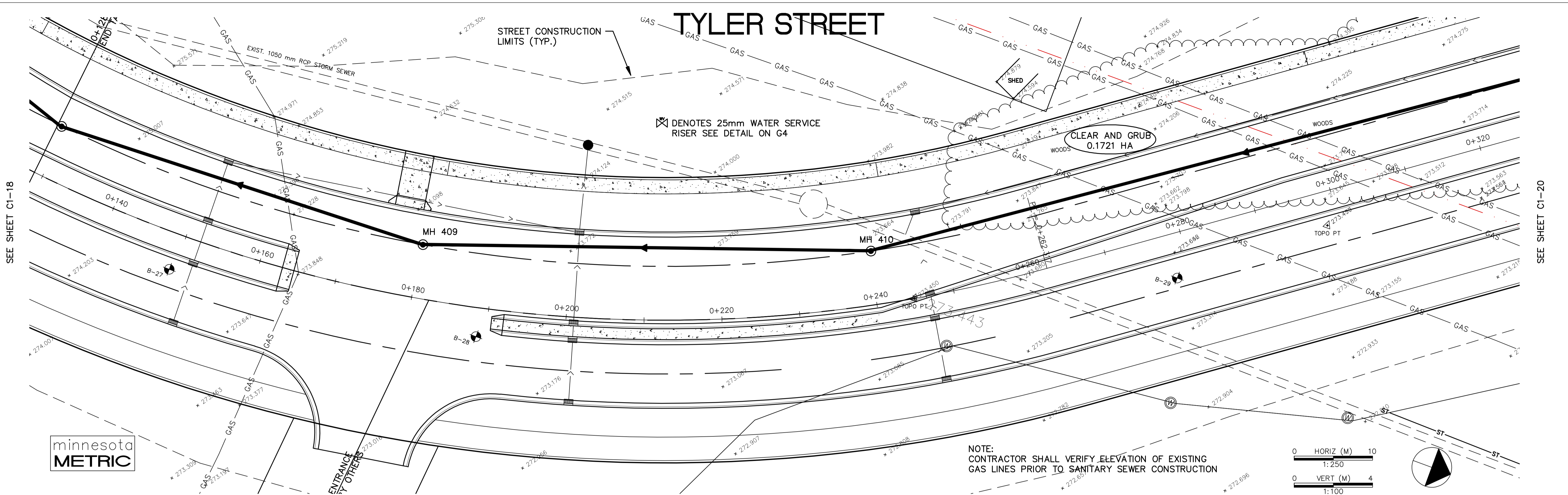


# TYLER STREET

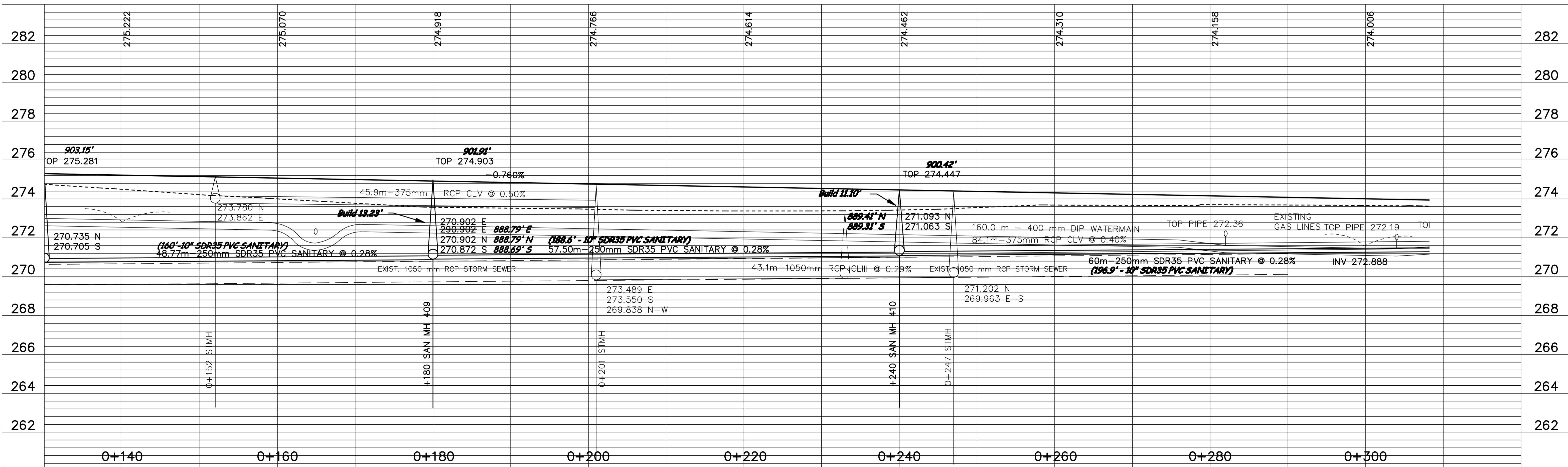
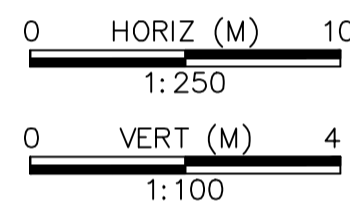


SEE SHEET C1-18

SEE SHEET C1-20

minnesota  
METRIC

NOTE:  
CONTRACTOR SHALL VERIFY ELEVATION OF EXISTING  
GAS LINES PRIOR TO SANITARY SEWER CONSTRUCTION



DESIGNED BY: AB JOB DATE: MARCH 1998  
 DRAWN BY: [Signature] JOB NUMBER: 800110J  
 APPROVED: [Signature] CAD DATE: [Signature]  
 CAD FILE: February 08, 1999 11:25:26 a.m.  
 800110j\Drawgs\NORTH\_TYLER\02.DWG

I HEREBY CERTIFY THAT THIS PLAN, SPECIFICATION,  
 OR REPORT WAS PREPARED BY ME OR UNDER MY DIRECT  
 SUPERVISION AND THAT I AM A DULY REGISTERED  
 PROFESSIONAL ENGINEER UNDER THE LAWS OF THE  
 STATE OF MINNESOTA.  
 DATE: \_\_\_\_\_ REG. NO.: 15316

NO.	DATE	BY	REVISION DESCRIPTION
1	1-21-99	PH	DELETED WM C.O. NO.1

1326 ENERGY PARK DRIVE  
 ST. PAUL, MINNESOTA 55108  
 (612) 644-4389

Howard R. Green Company  
 CONSULTING ENGINEERS

CITY OF ELK RIVER  
 EASTERN AREA  
 PHASE I IMPROVEMENTS

STREET AND UTILITY IMPROVEMENTS  
 TYLER STREET  
 0+140 TO 0+300

SHEET NO.  
**C1-19**