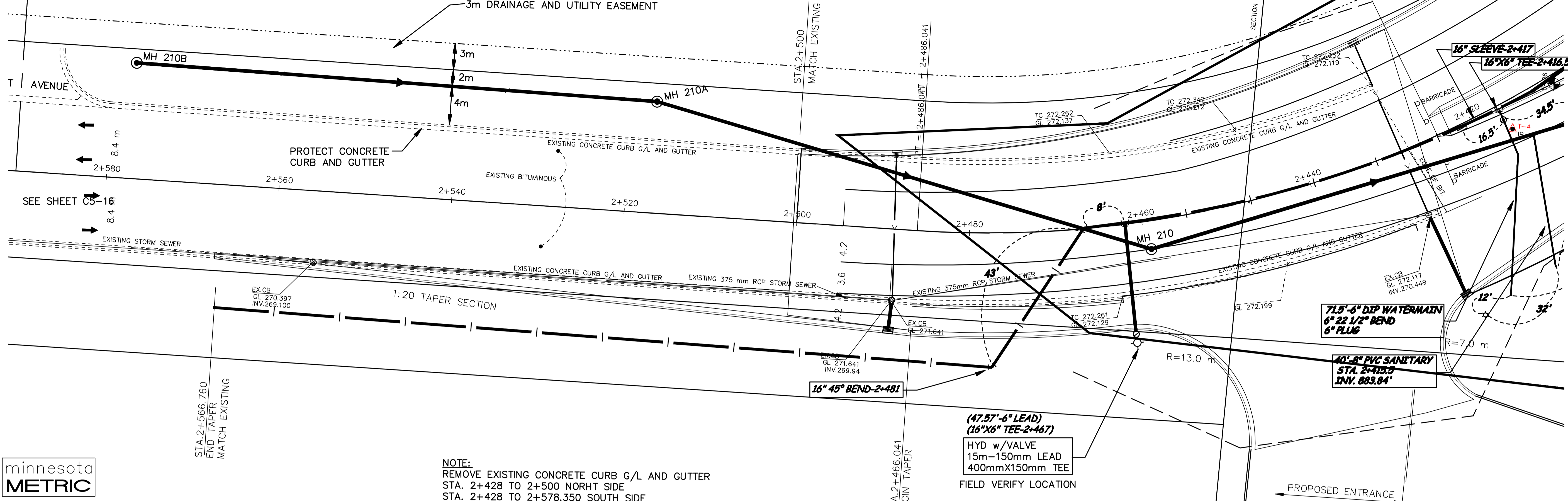


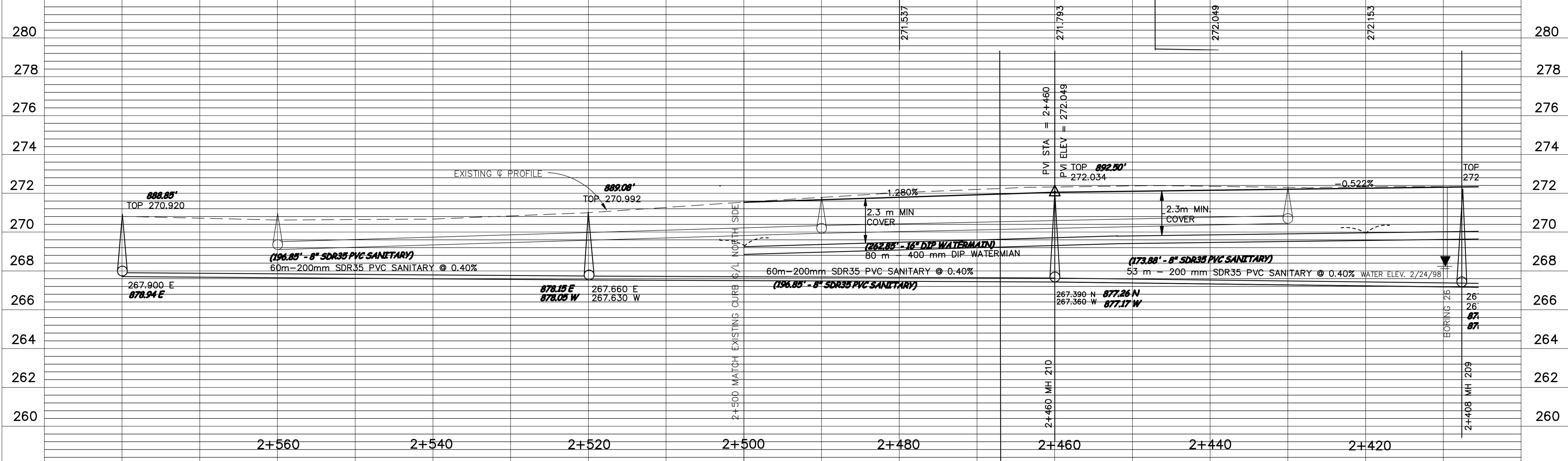
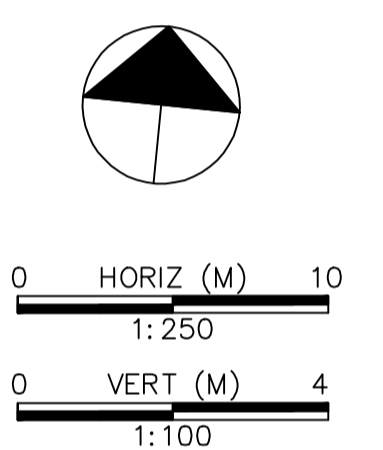
171ST AVENUE

SEE SHEET C1-16



minnesota METRIC

NOTE:
REMOVE EXISTING CONCRETE CURB G/L AND GUTTER
STA. 2+428 TO 2+500 NORTH SIDE
STA. 2+428 TO 2+578.350 SOUTH SIDE



DESIGNED BY: AB JOB DATE: MARCH 1998
DRAWN BY: [Signature] JOB NUMBER: 800110J
APPROVED: [Signature] CAD DATE:
CAD FILE: October 08, 1998 2:15:15 p.m.
800110j\Drawgs\Tyler_BASE\16.DWG

I HEREBY CERTIFY THAT THIS PLAN, SPECIFICATION, OR REPORT WAS PREPARED BY ME OR UNDER MY DIRECT SUPERVISION AND THAT I AM A DULY REGISTERED PROFESSIONAL ENGINEER UNDER THE LAWS OF THE STATE OF MINNESOTA.
DATE: 10/15/98 REG. NO.: 15316

NO.	DATE	BY	REVISION DESCRIPTION

1326 ENERGY PARK DRIVE
ST. PAUL, MINNESOTA 55108
(612) 644-4389
Howard R. Green Company
CONSULTING ENGINEERS

CITY OF ELK RIVER
EASTERN AREA
PHASE I IMPROVEMENTS

STREET AND UTILITY IMPROVEMENTS
TYLER STREET
2+410 TO 2+600

SHEET NO.
C1-17