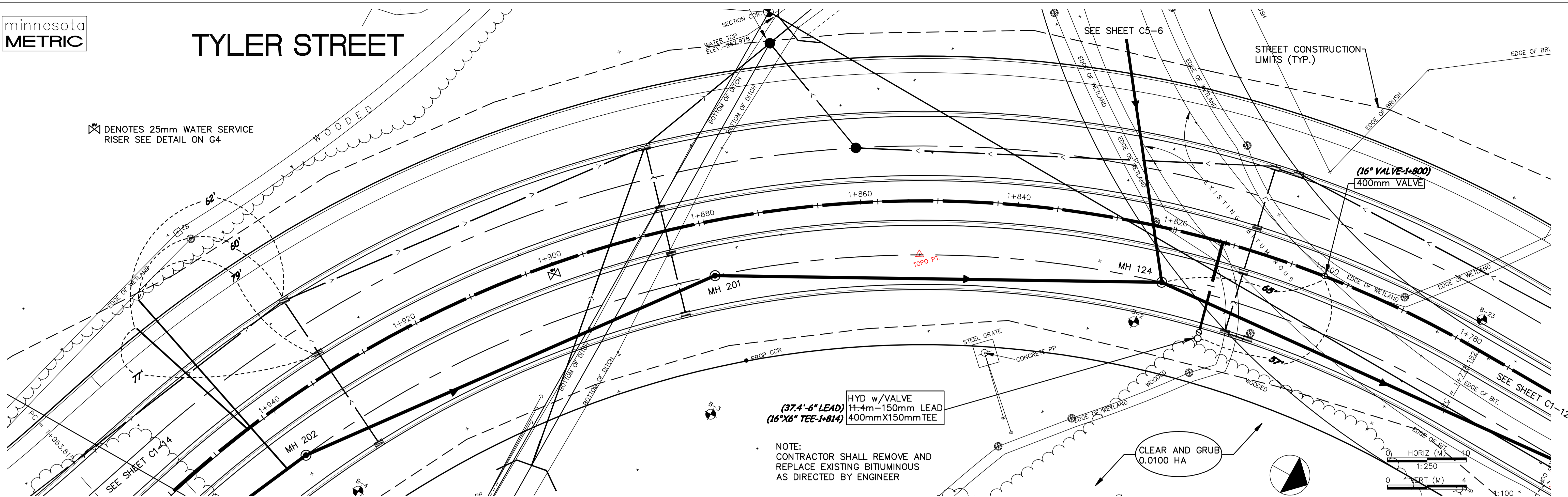


TYLER STREET

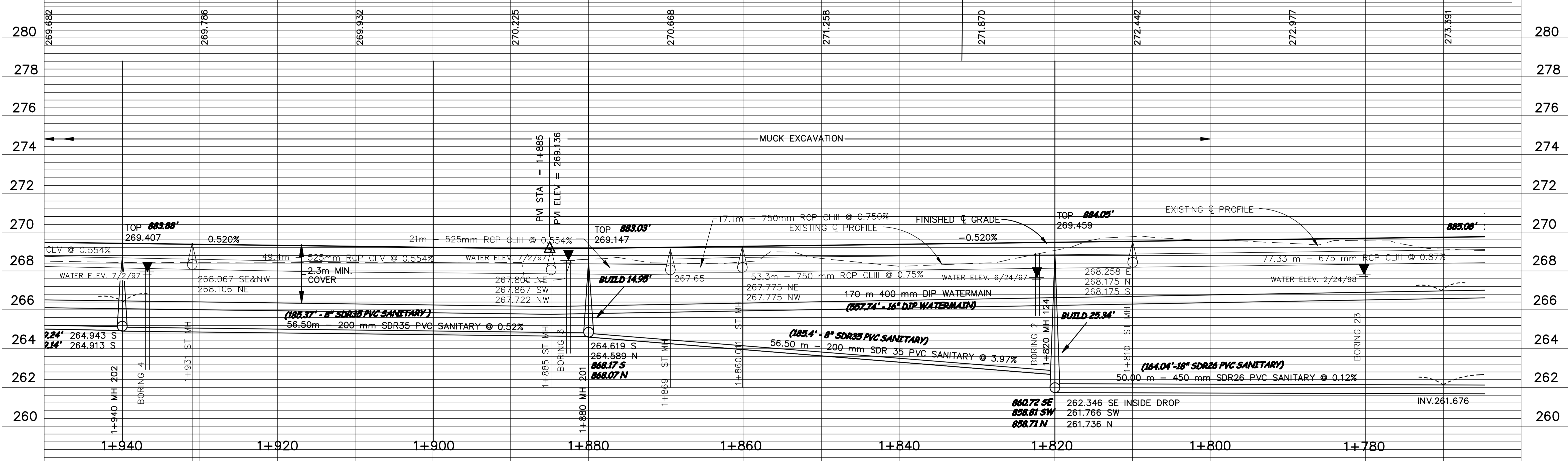
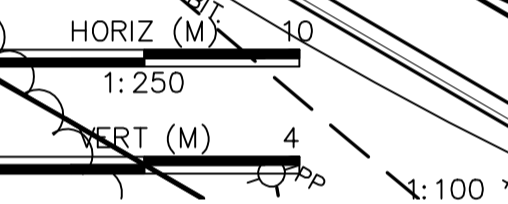
✕ DENOTES 25mm WATER SERVICE RISER SEE DETAIL ON G4



HYD w/VALVE
(37.4'-6" LEAD)
(16"X6" TEE-1-814)
11.4m-150mm LEAD
400mmX150mm TEE

NOTE:
CONTRACTOR SHALL REMOVE AND
REPLACE EXISTING BITUMINOUS
AS DIRECTED BY ENGINEER

CLEAR AND GRUB
0.0100 HA



DESIGNED BY: AB JOB DATE: MARCH 1998
 DRAWN BY: [Signature] JOB NUMBER: 800110J
 APPROVED: [Signature] CAD DATE:
 CAD FILE: October 08, 1998 2:24:08 p.m.
 800110J\Draws\Tyler_BASE\12.DWG

I HEREBY CERTIFY THAT THIS PLAN, SPECIFICATION,
 OR REPORT WAS PREPARED BY ME OR UNDER MY DIRECT
 SUPERVISION AND THAT I AM A DULY REGISTERED
 PROFESSIONAL ENGINEER UNDER THE LAWS OF THE
 STATE OF MINNESOTA.
 DATE 10/15/98 REG. NO. 15316

NO.	DATE	BY	REVISION DESCRIPTION

1326 ENERGY PARK DRIVE
 ST. PAUL, MINNESOTA 55108
 (612) 644-4389
Howard R. Green Company
 CONSULTING ENGINEERS

CITY OF ELK RIVER
 EASTERN AREA
 PHASE I IMPROVEMENTS

STREET AND UTILITY IMPROVEMENTS
 TYLER STREET
 1+770 TO 1+940

SHEET NO.
C1-13