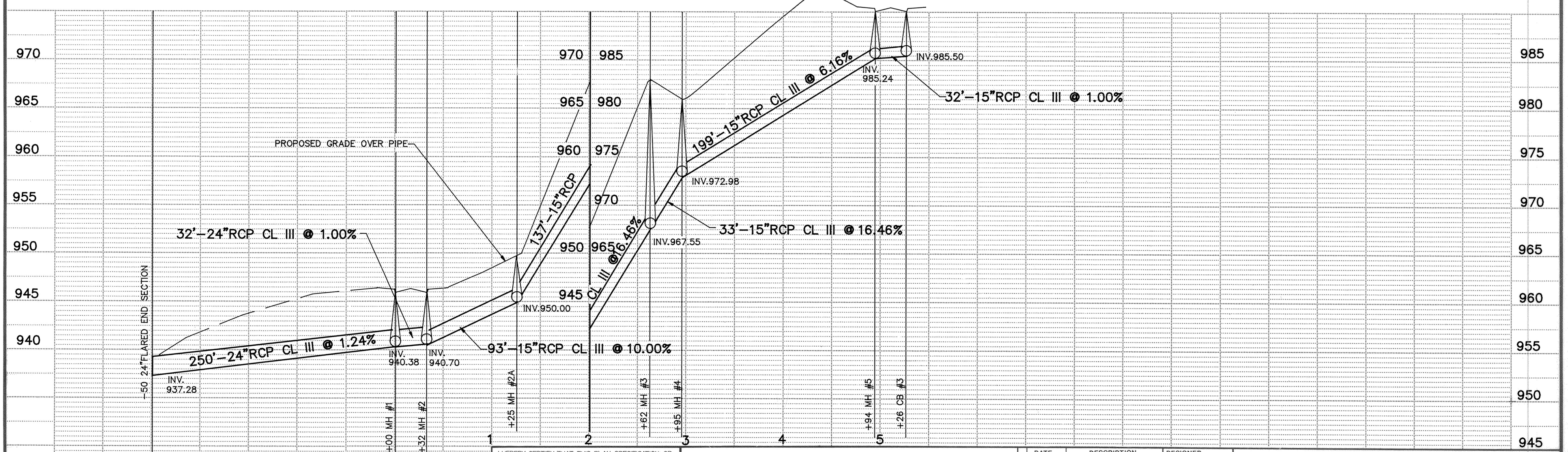


TEMPORARY STORM SEWER OUTLET TO CITY PONDING AREA LOCATED WEST OF BALDWIN STREET. INVERT AND LENGTH OF STORM SEWER TO BE FIELD VERIFIED.



I HEREBY CERTIFY THAT THIS PLAN, SPECIFICATION, OR REPORT WAS PREPARED BY ME OR UNDER MY DIRECT SUPERVISION AND THAT I AM A DULY REGISTERED PROFESSIONAL ENGINEER UNDER THE LAWS OF THE STATE OF MINNESOTA.

Terry J. Maier
DATE 8/21/87 REG. NO. 15316

MSA CONSULTING ENGINEERS
Maier Stewart & Associates Inc.
1959 SLOAN PLACE (612)774-6021 ST. PAUL, MINNESOTA 55117

DATE	DESCRIPTION	DESIGNED
		CHECKED
		DRAWN <i>gjt</i>
		GRAPHIC SCALE
		0 HORIZ. 50
		0 VERT. 5

CITY OF ELK RIVER
DEERFIELD FOURTH ADDITION
LOCATION MAP AND STREET SECTION

DATE JULY, 1989 SHEET 7 OF 16 SHEETS PROJECT NO. 230-073