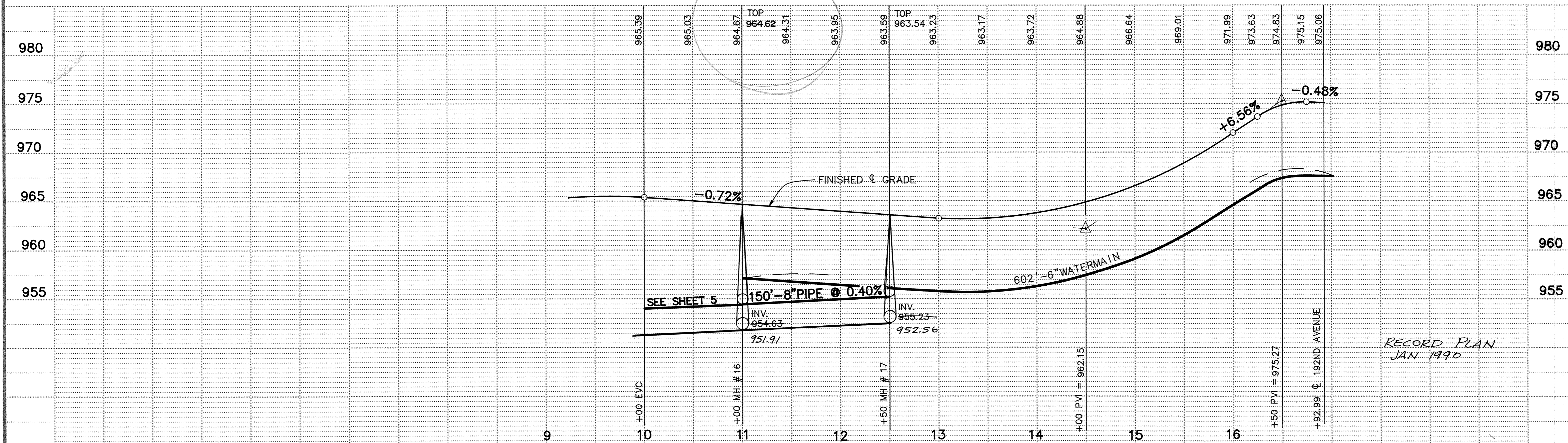
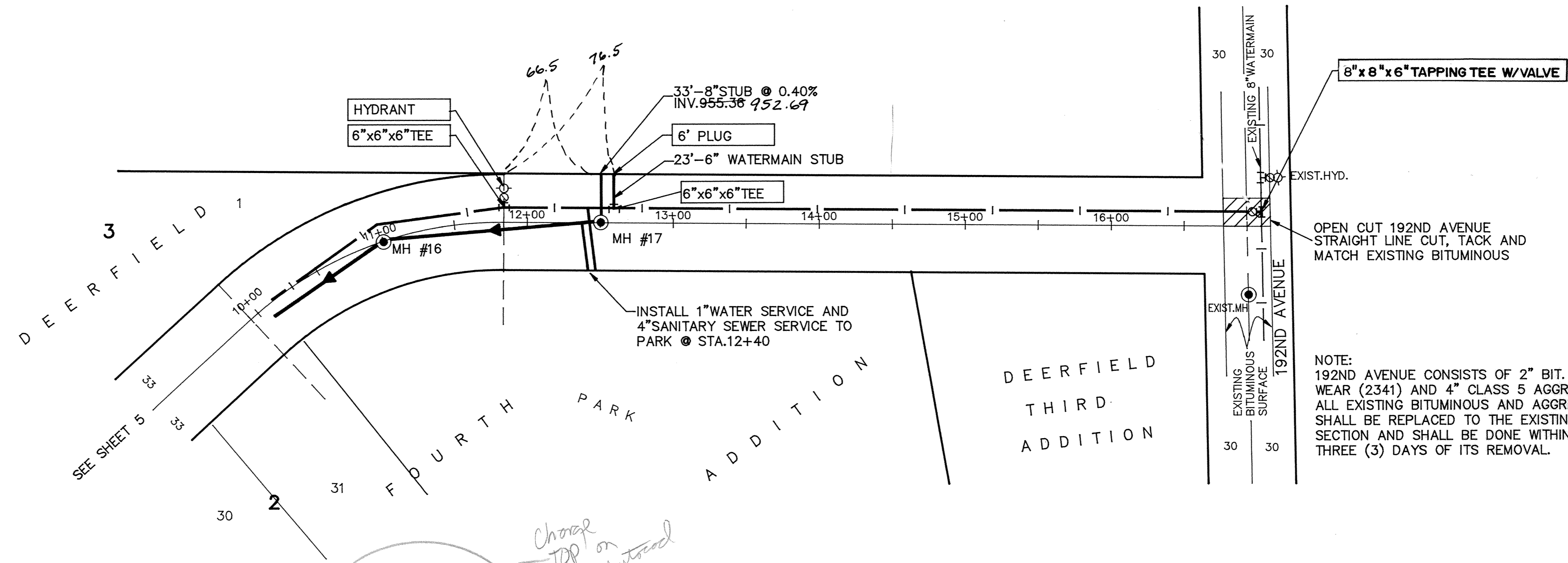
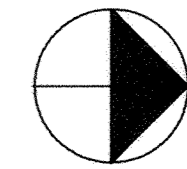


DODGE STREET



I HEREBY CERTIFY THAT THIS PLAN, SPECIFICATION, OR REPORT WAS PREPARED BY ME OR UNDER MY DIRECT SUPERVISION AND THAT I AM A DULY REGISTERED PROFESSIONAL ENGINEER UNDER THE LAWS OF THE STATE OF MINNESOTA.
Seny J. Maurer
 DATE *8/21/89* REG. NO. *15316*

Maier Stewart & Associates Inc.
 CONSULTING ENGINEERS
 1959 SLOAN PLACE (612) 774-6021 ST. PAUL, MINNESOTA 55117

DATE	DESCRIPTION	DESIGNED
		CHECKED
		DRAWN
		GRAPHIC SCALE
		° HORIZ. 50
		° VERT. 5

CITY OF ELK RIVER
 SANITARY SEWER AND WATERMAIN
 DODGE STREET

DATE JULY, 1989 SHEET 6 OF 16 SHEETS PROJECT NO. 230-073