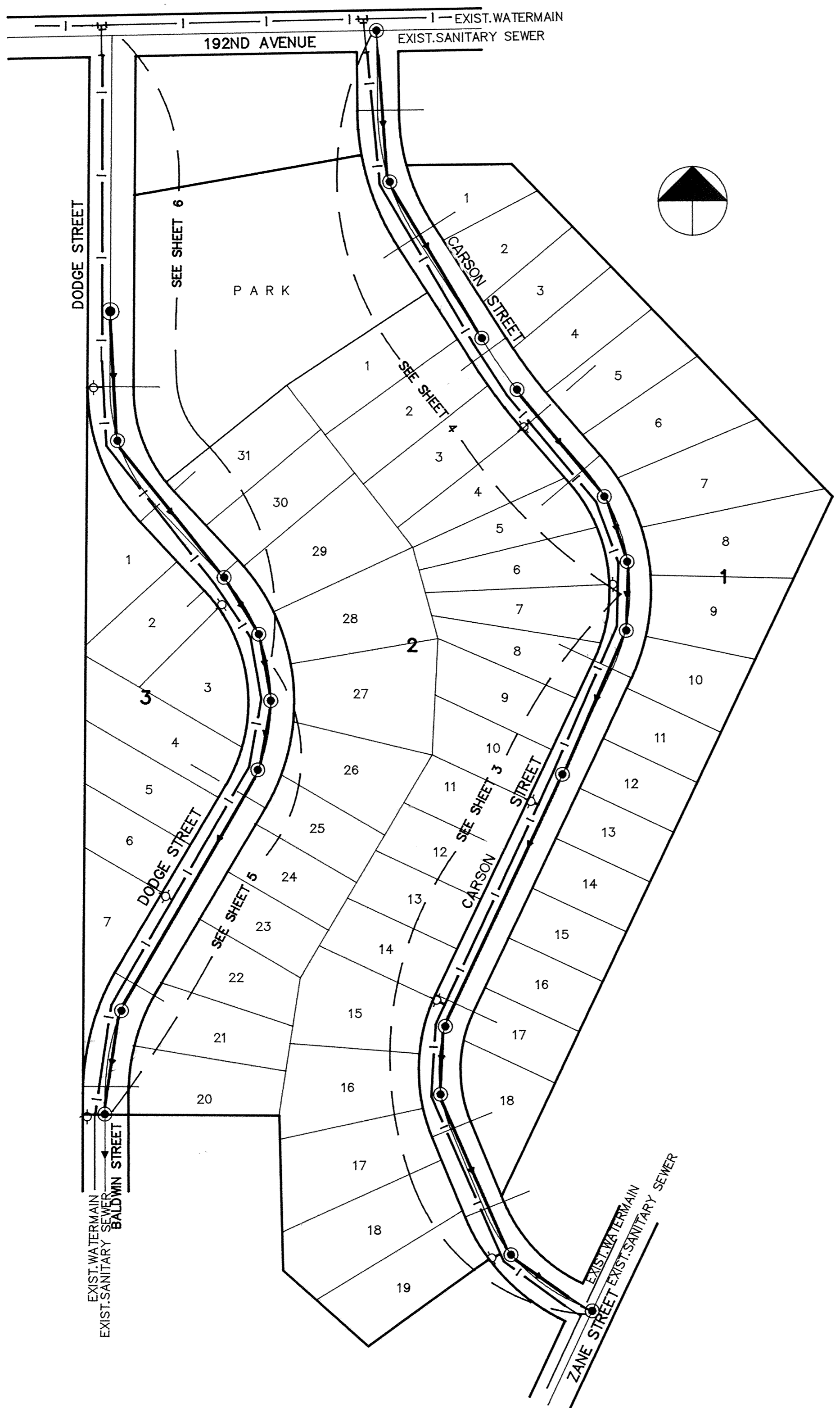
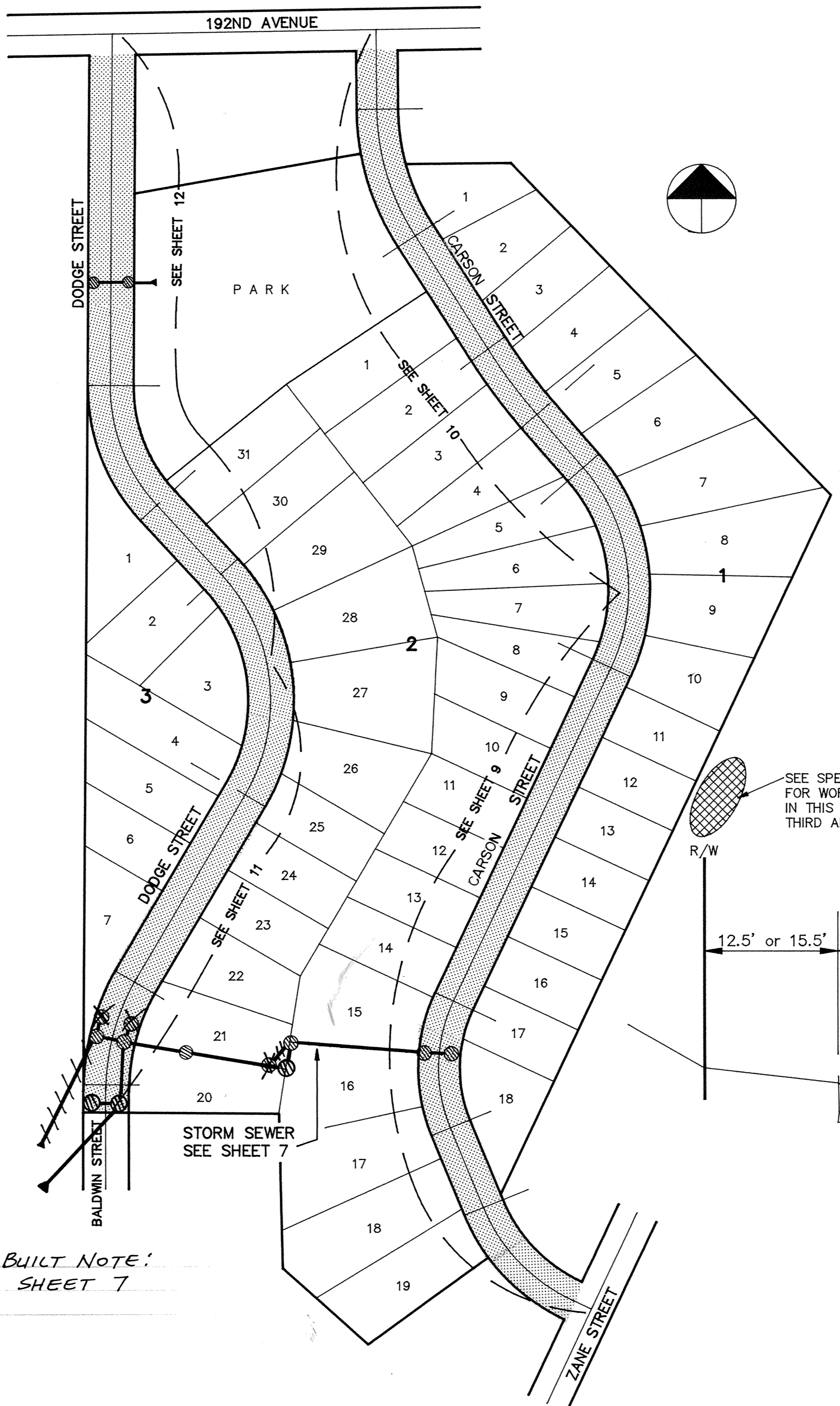


PROJECT NO. 2030-073
SHEET NO. 2 OF 16 SHEETS
DATE JULY, 1989
PROJECT NO. 230-073



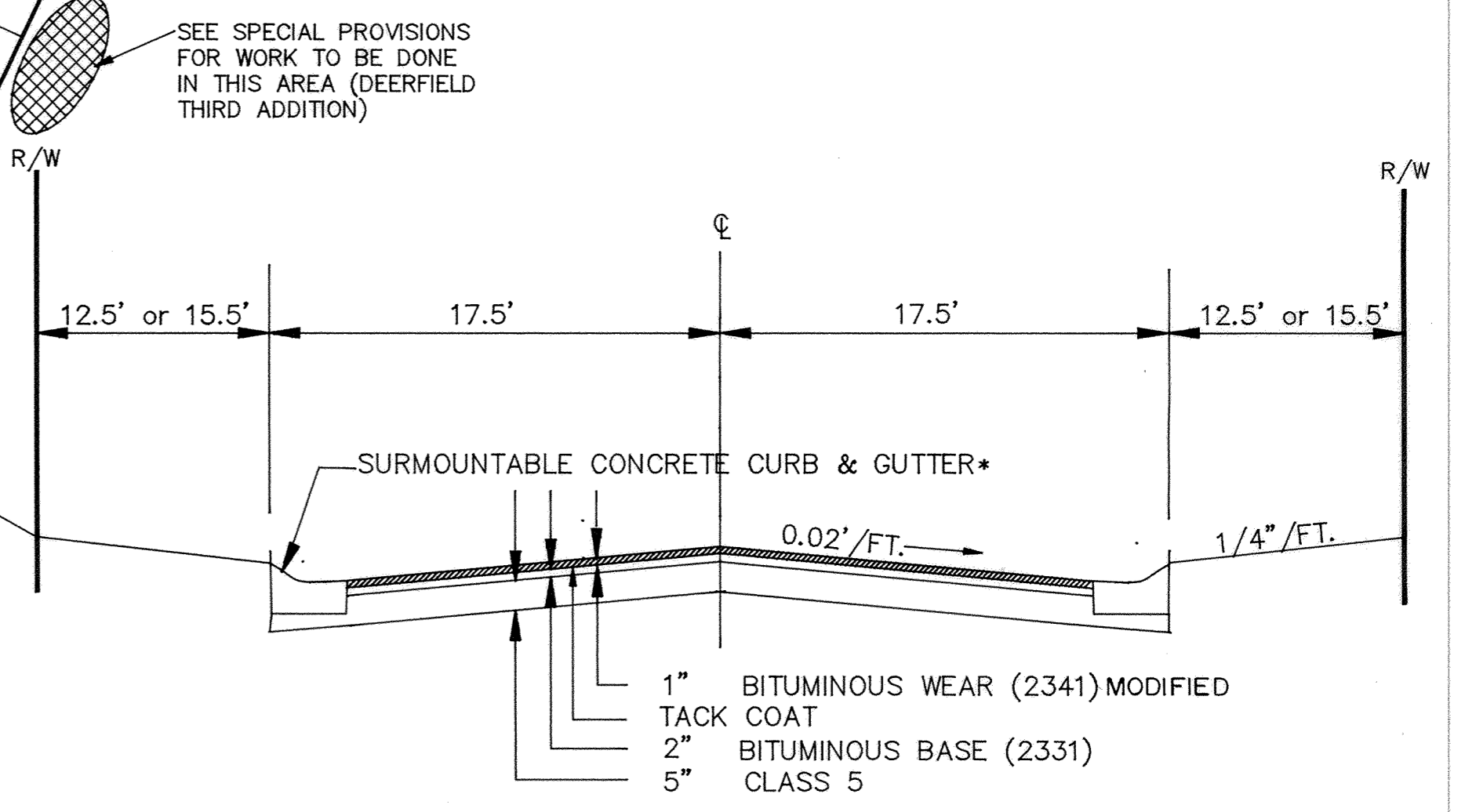
SANITARY SEWER AND WATERMAIN



STREET AND STORM SEWER

As-Built Note:
SEE SHEET 7

- NOTE:
- 1 BITUMINOUS WEAR COURSE (2341) TO BE PLACED IN SPRING OF 1990.
 - 2 SOD SHALL BE PLACED 3' BEHIND ALL CURB REMAINDER OF ROW SHALL BE SEED.



TYPICAL STREET SECTION

* TRANSITION TO B618 CONCRETE CURB AND GUTTER 5" ON EACH SIDE OF ALL INLET STRUCTURES

RECORD PLAN JAN. 1990

I HEREBY CERTIFY THAT THIS PLAN, SPECIFICATION, OR REPORT WAS PREPARED BY ME OR UNDER MY DIRECT SUPERVISION AND THAT I AM A DULY REGISTERED PROFESSIONAL ENGINEER UNDER THE LAWS OF THE STATE OF MINNESOTA.

Erny J. Maier
DATE 8/21/89 REG. NO. 15316

MSA CONSULTING ENGINEERS
Maier Stewart & Associates Inc.
1959 SLOAN PLACE (612) 774-6021 ST. PAUL, MINNESOTA 55117

DATE	DESCRIPTION	DESIGNED	CHECKED

REVISIONS

GRAPHIC SCALE
 HORIZ. NONE
 VERT.

CITY OF ELK RIVER
DEERFIELD 4TH ADDITION
LOCATION MAP AND DETAILS

DATE JULY, 1989 SHEET 2 OF 16 SHEETS PROJECT NO. 230-073