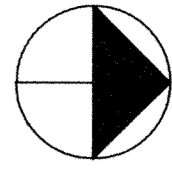
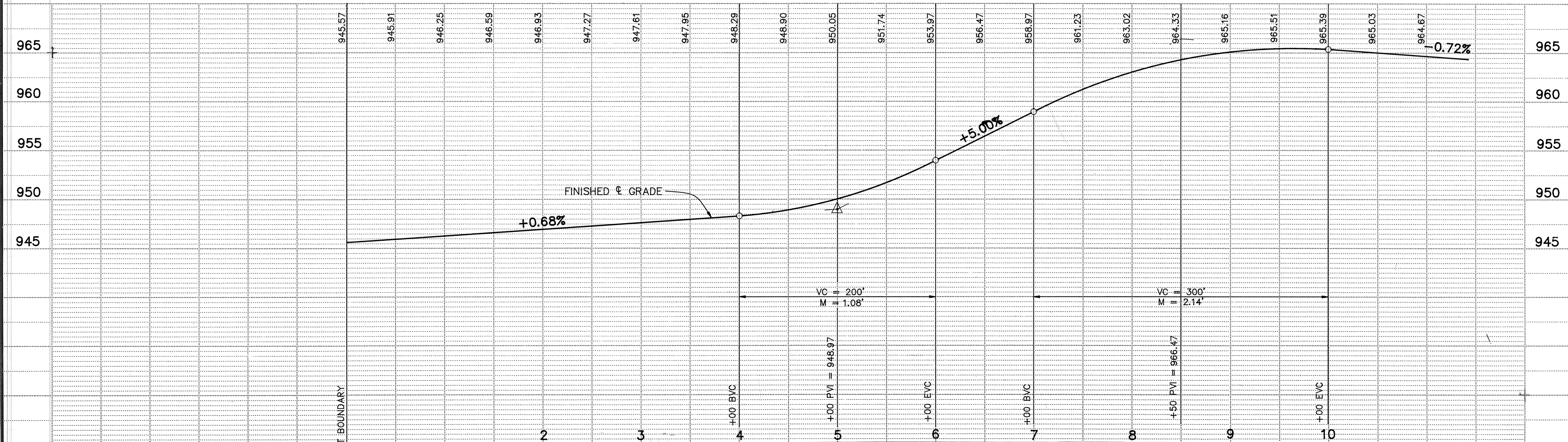
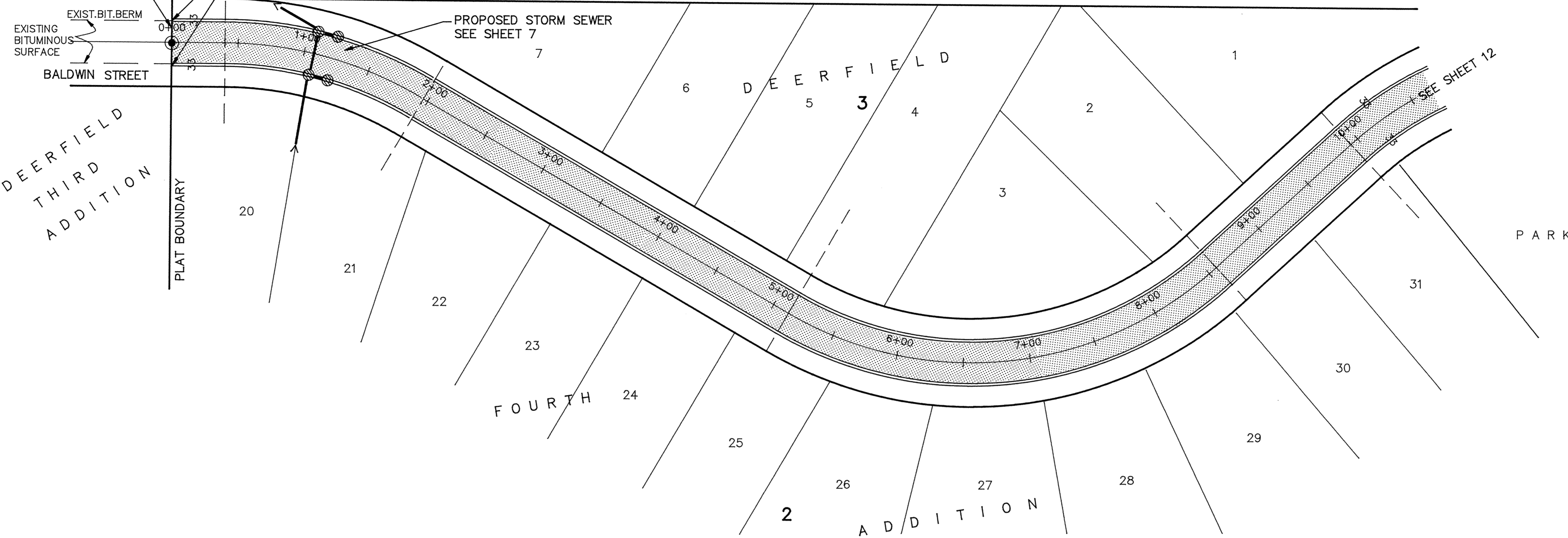


# DODGE STREET



STRAIGHT LINE CUT, TACK AND MATCH EXISTING BITUMINOUS

END CONCRETE CURB & GUTTER W/2' TAPER SECTION



I HEREBY CERTIFY THAT THIS PLAN, SPECIFICATION, OR REPORT WAS PREPARED BY ME OR UNDER MY DIRECT SUPERVISION AND THAT I AM A DULY REGISTERED PROFESSIONAL ENGINEER UNDER THE LAWS OF THE STATE OF MINNESOTA.

*Terry J. Maurer*  
 DATE 8/21/89 REG. NO. 15316

**MSA** CONSULTING ENGINEERS  
**Maier Stewart & Associates Inc.**  
 1959 SLOAN PLACE (612) 774-6021 ST. PAUL, MINNESOTA 55117

REVISIONS	DATE	DESCRIPTION

DESIGNED	
CHECKED	
DRAWN	
GRAPHIC SCALE	
HORIZ.	50
VERT.	5

CITY OF ELK RIVER  
 STREET CONSTRUCTION  
 DODGE STREET

DATE JULY, 1989 SHEET 11 OF 16 SHEETS PROJECT NO. 230-073