

REVISIONS			
NO.	DATE	BY	DESCRIPTION

NOTE:
NO CURB AND GUTTER SHALL BE PLACED ON STATE RIGHT OF WAY

NOTE:
STORM MOVED TO THE WEST SIDE OF DODGE DUE TO GAS MAIN CONFLICT

NOTE:
REMOVAL OF SHRUBS, PLANTINGS AND LANDSCAPE ROCK IS INCIDENTAL TO PROJECT

NOTE:
MATCH EXISTING BITUMINOUS STRAIGHT LINE CUT, TACK & SURFACE 1" DEEP X 4" WIDE, MILL EXISTING BITUMINOUS

NOTE:
4" DOUBLE SOLID YELLOW LINE

NOTE:
4" SKIP WHITE LINE

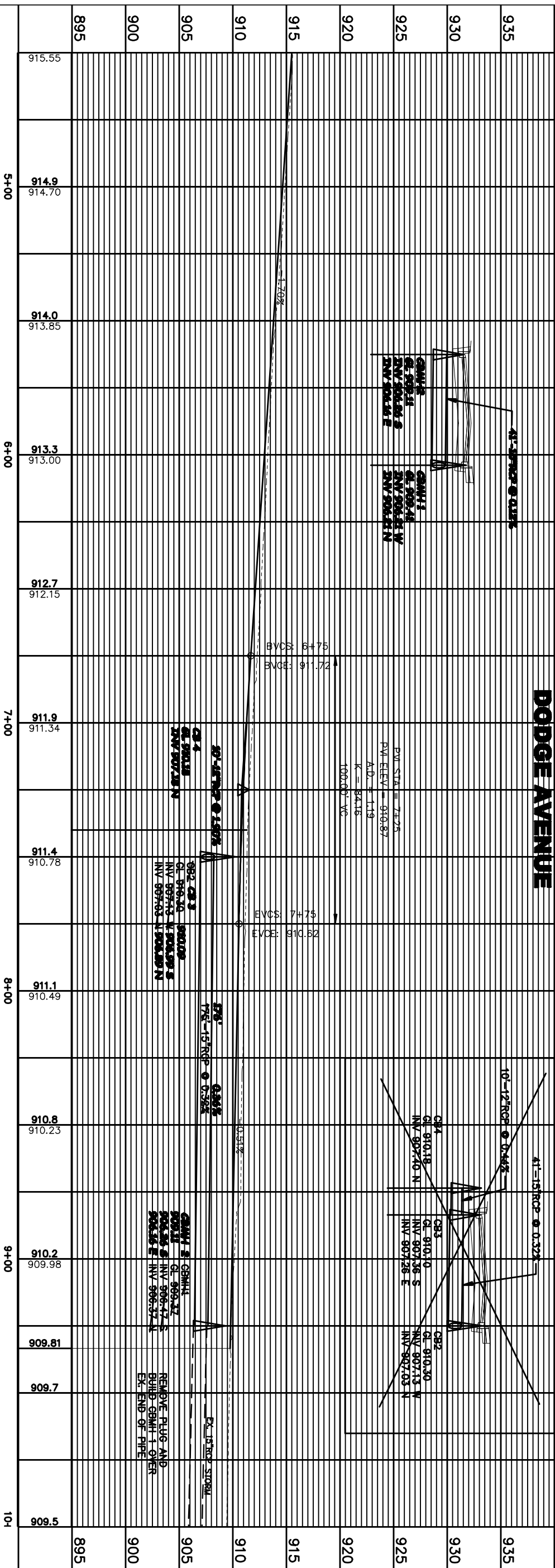
NOTE:
MATCH EXISTING BITUMINOUS STRAIGHT LINE CUT, TACK & SURFACE 1" DEEP X 4" WIDE, MILL EXISTING BITUMINOUS

NOTE:
END MODULAR BLOCK RETAINING WALL AT 7+60 BASE = 910.93, TOP = 911.92

NOTE:
PLACE SILT FENCE 10' BEHIND CURB LOCATION AS SHOWN

NOTE:
CONSTRUCT MODULAR BLOCK RETAINING WALL AT BACK OF WALK. PLACE SALVAGED LANDSCAPING ROCK BETWEEN WALL AND PARKING LOT CURBING FROM HWY ROW TO BACK OF CURB

NOTE:
BEGIN MODULAR BLOCK RETAINING WALL AT 6+40 BASE = 912.55, TOP = 913.25



RECORD PLAN
DODGE AVENUE
PLAN AND PROFILE
5TH STREET TO 4+00

CONSULTING ENGINEERS, P.L.C.
Engineers and Surveyors
4175 Lovell Road, Suite 118
Landington, MN 55014
Phone: (763) 706-4870
Fax: (763) 706-4874
bdmcc.com

DRAWN BY: JL
CHECKED BY: JMA
DESIGNED BY: JL

JOB NO. 226067

SHEET **P2** SHEETS **11**

I HEREBY CERTIFY THAT THIS PLAN, SPECIFICATION, OR REPORT WAS PREPARED BY ME OR UNDER MY DIRECT SUPERVISION AND THAT I AM A DULY LICENSED PROFESSIONAL ENGINEER UNDER THE LAWS OF THE STATE OF MINNESOTA.

PA001 BDM\CAD\CUSTOM\SIGNATURES\John.Anderson\JMA.tif

JOHN M. ANDERSON
FEB. 27, 2006 25889
DATE LIC. NO.