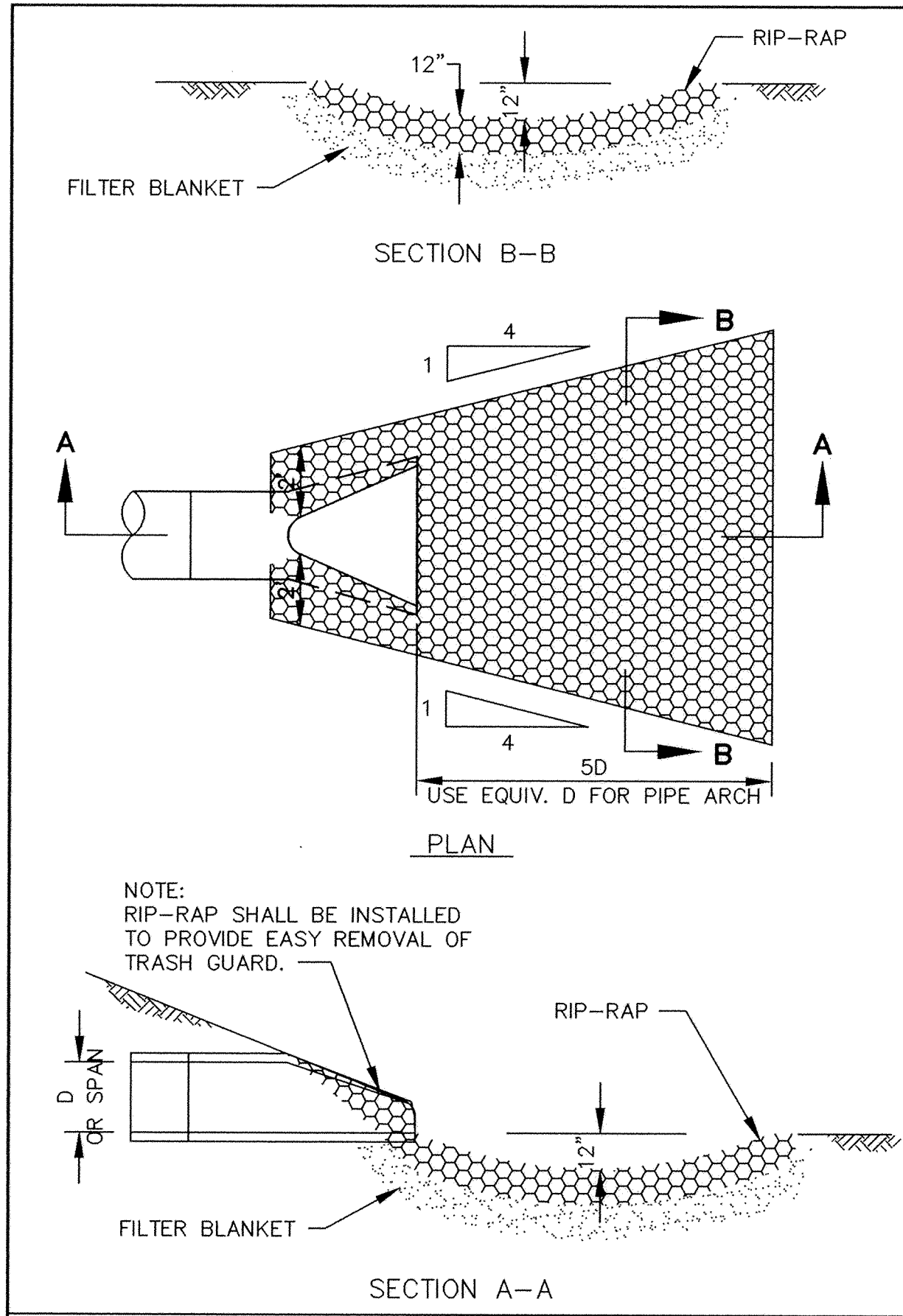
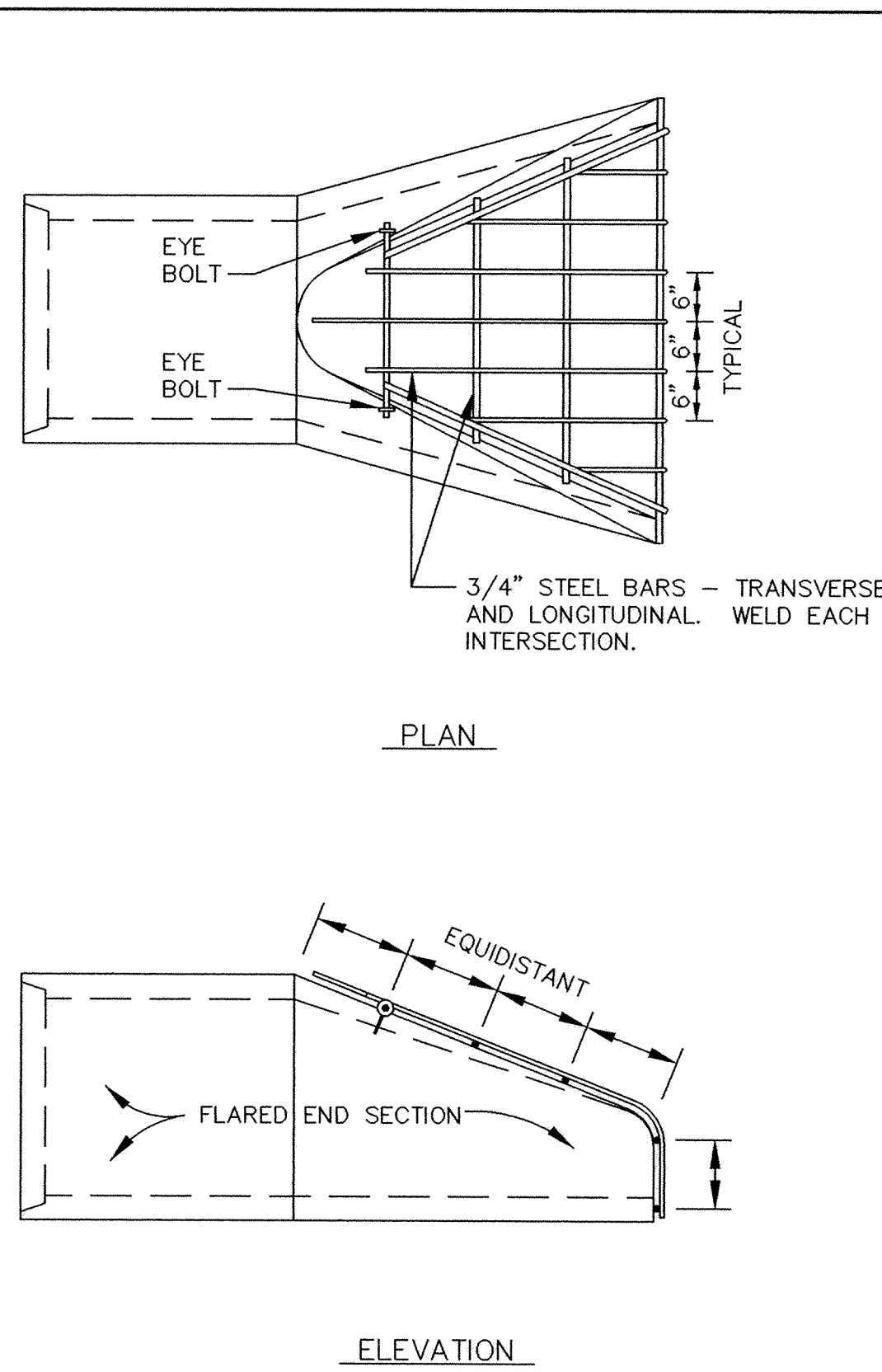


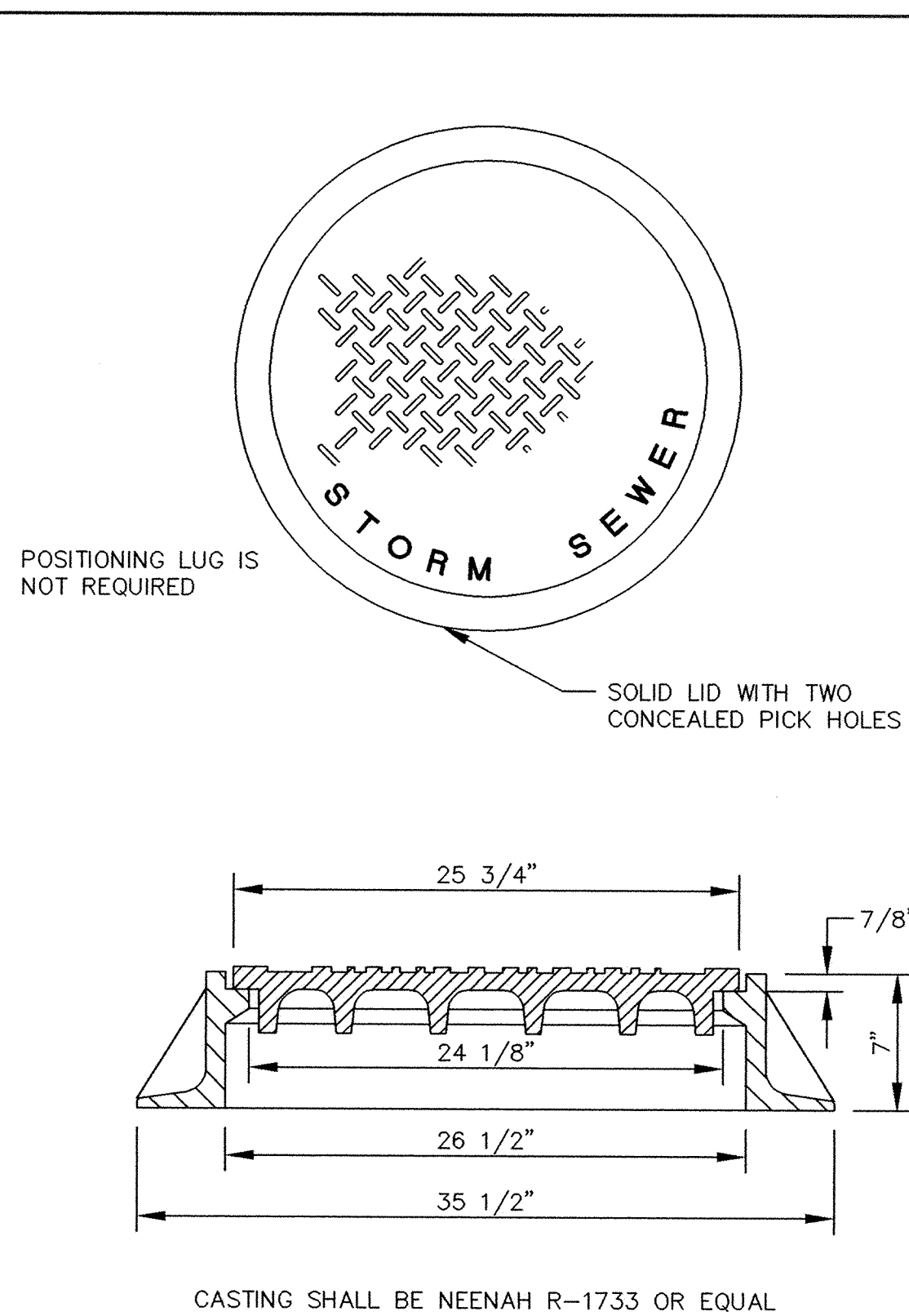
Mon Jul 25 10:27:34 1994



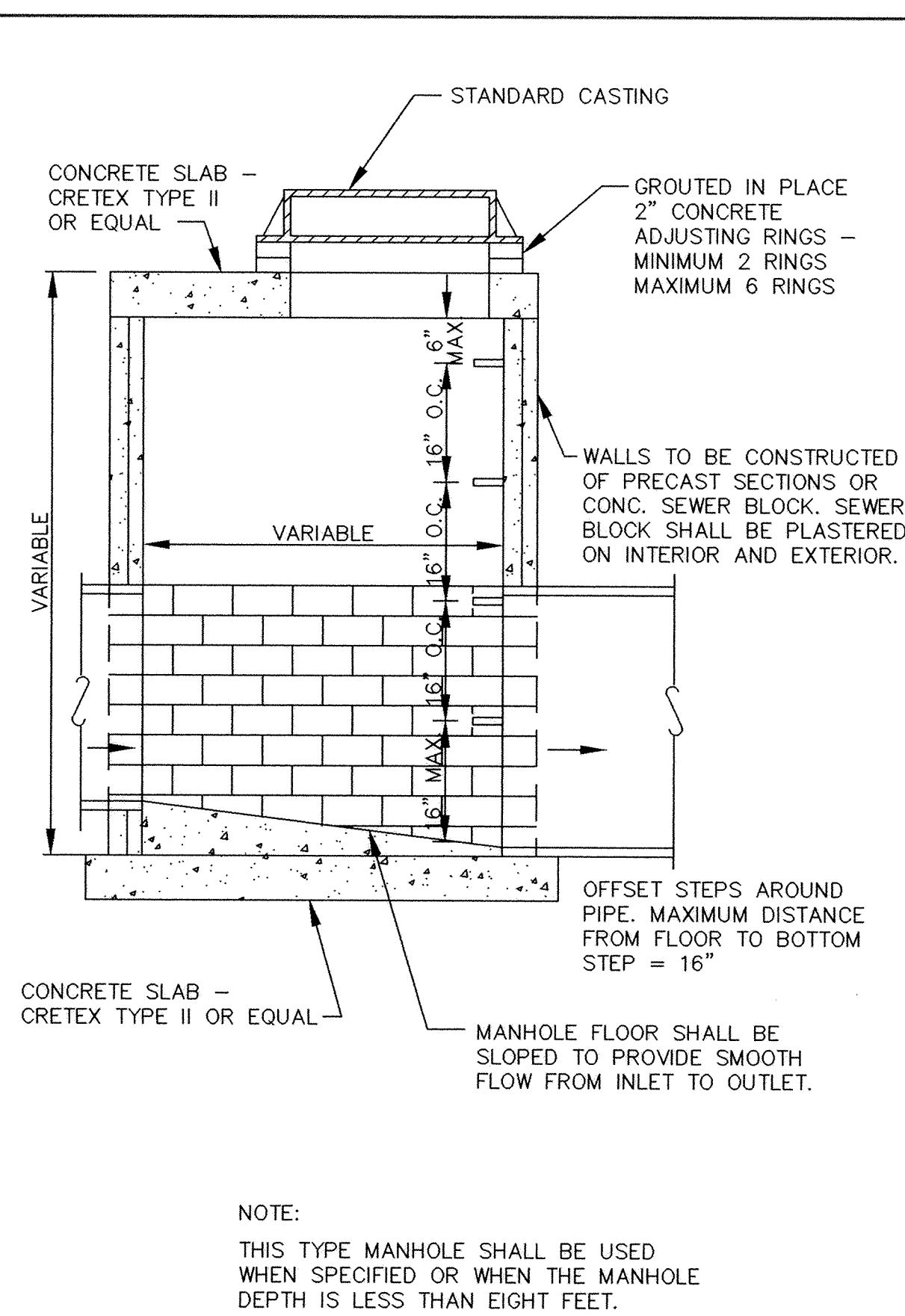
RIP-RAP INSTALLATION



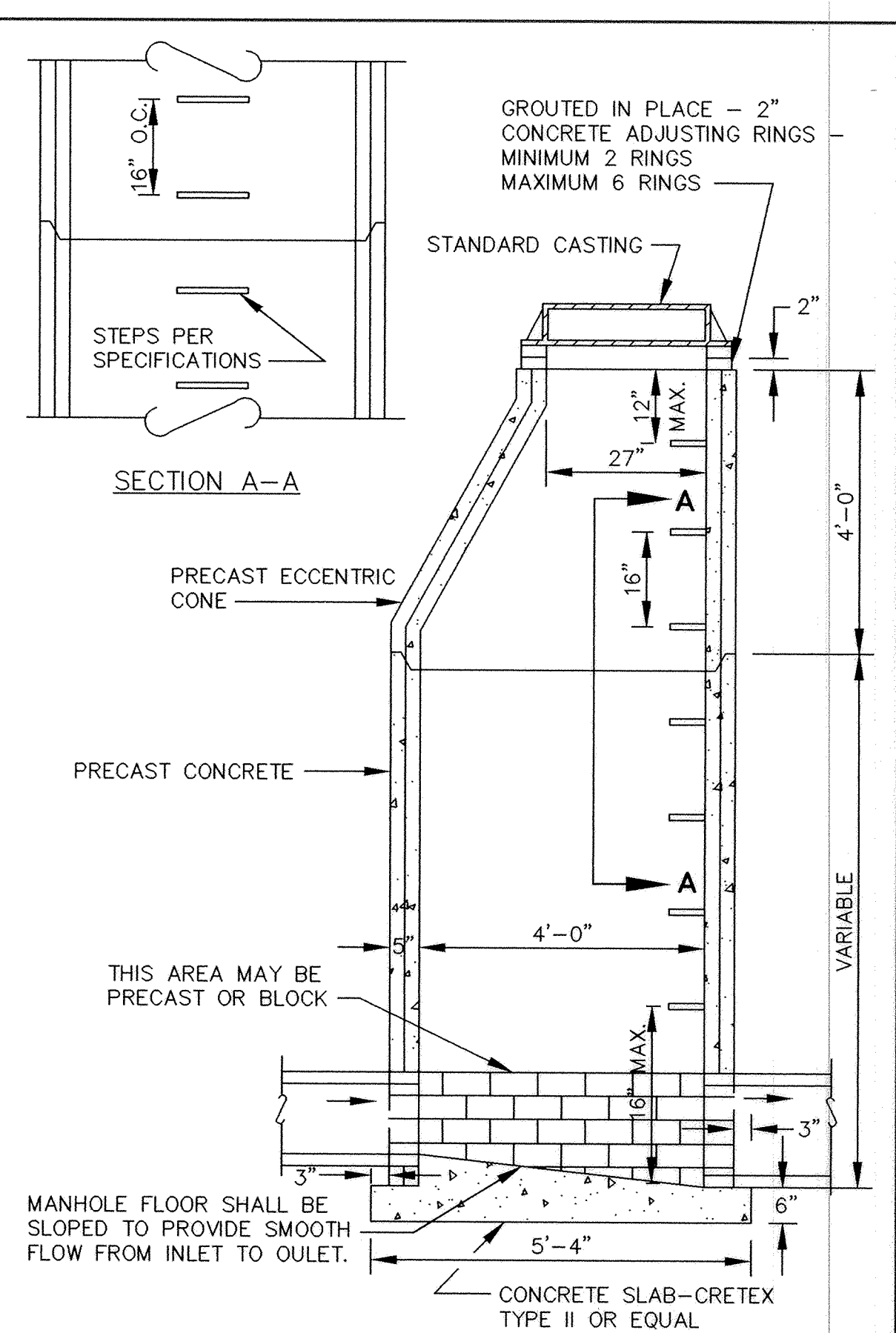
TRASH GUARD



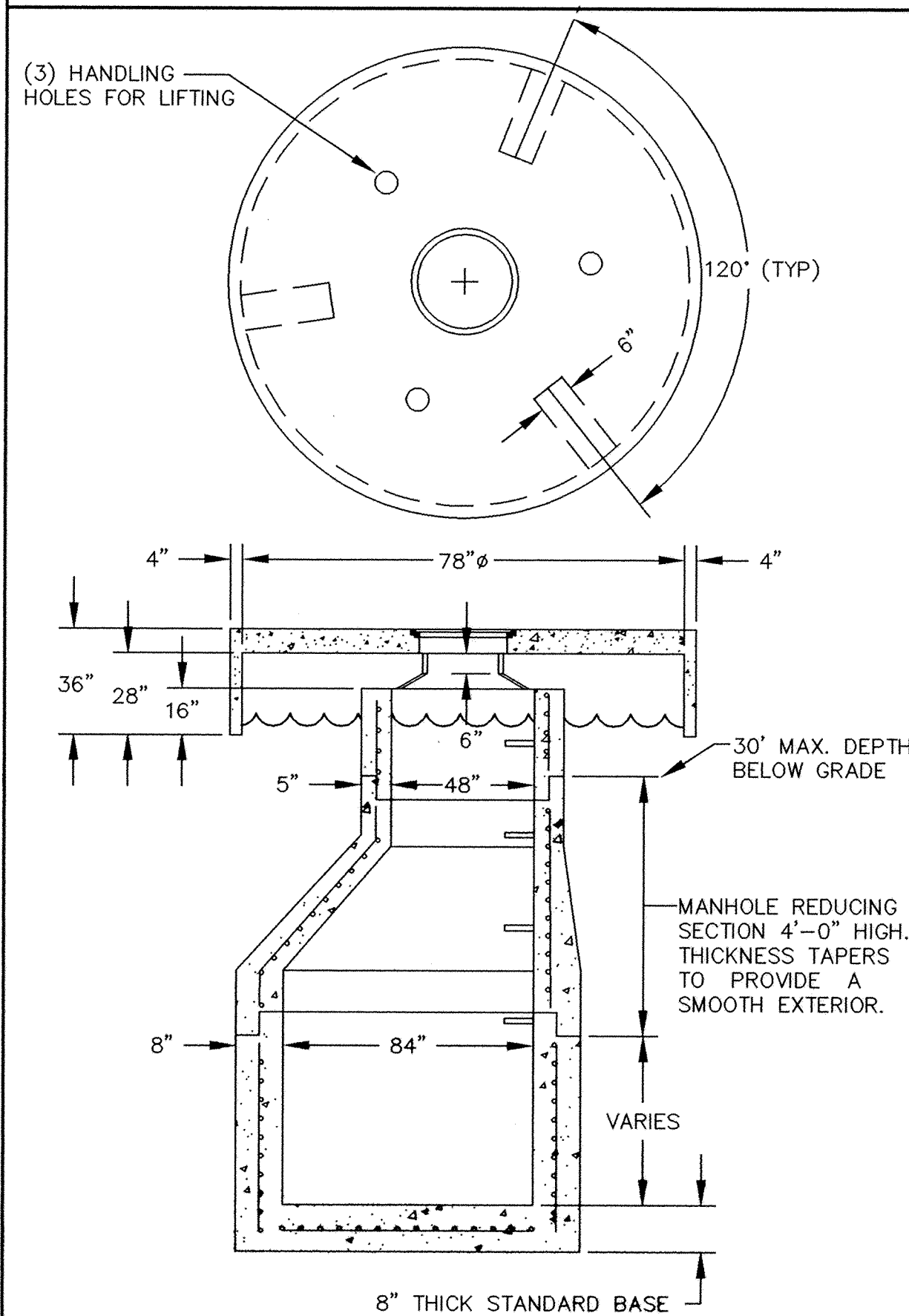
STANDARD MANHOLE CASTING



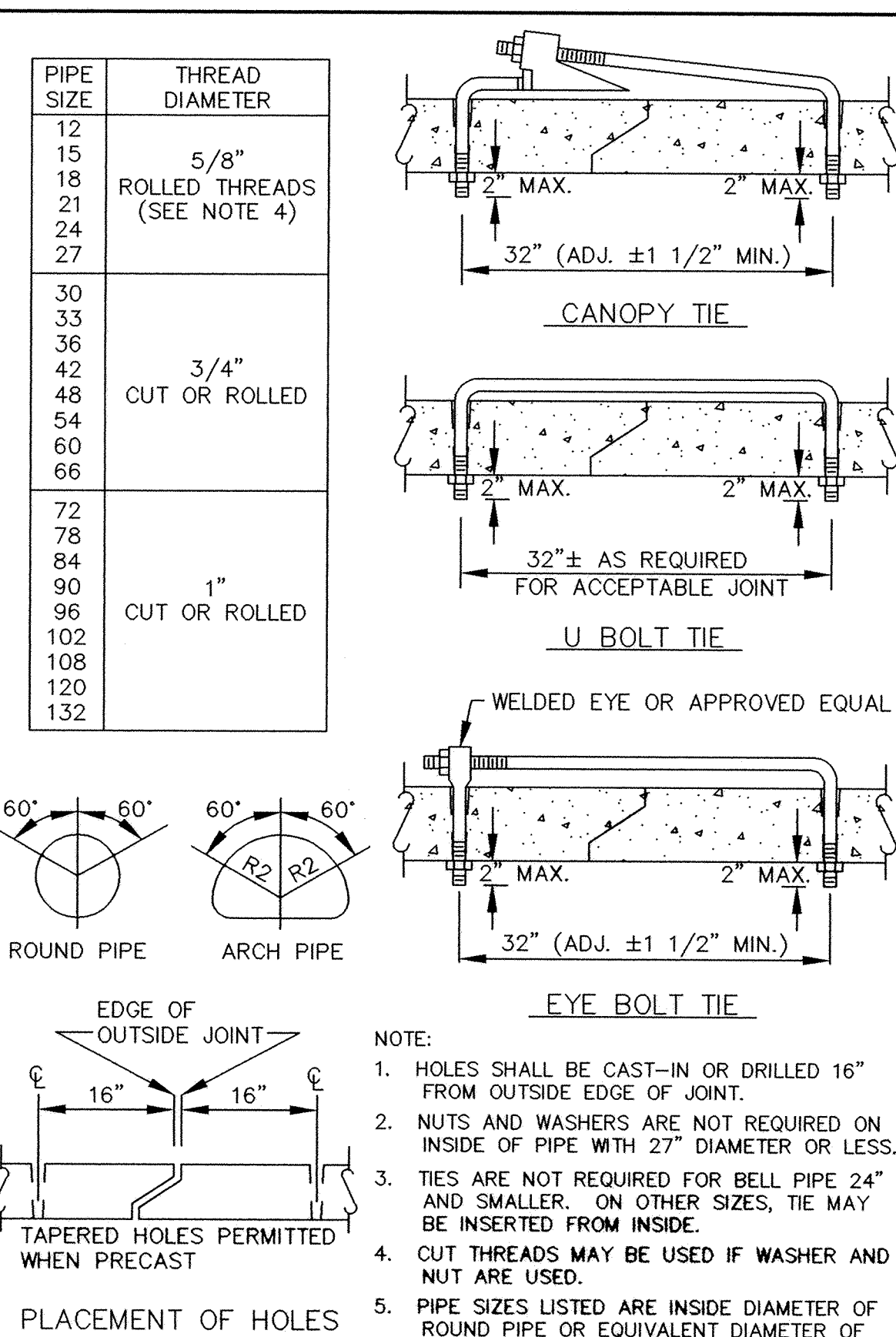
SLAB TOP MANHOLE



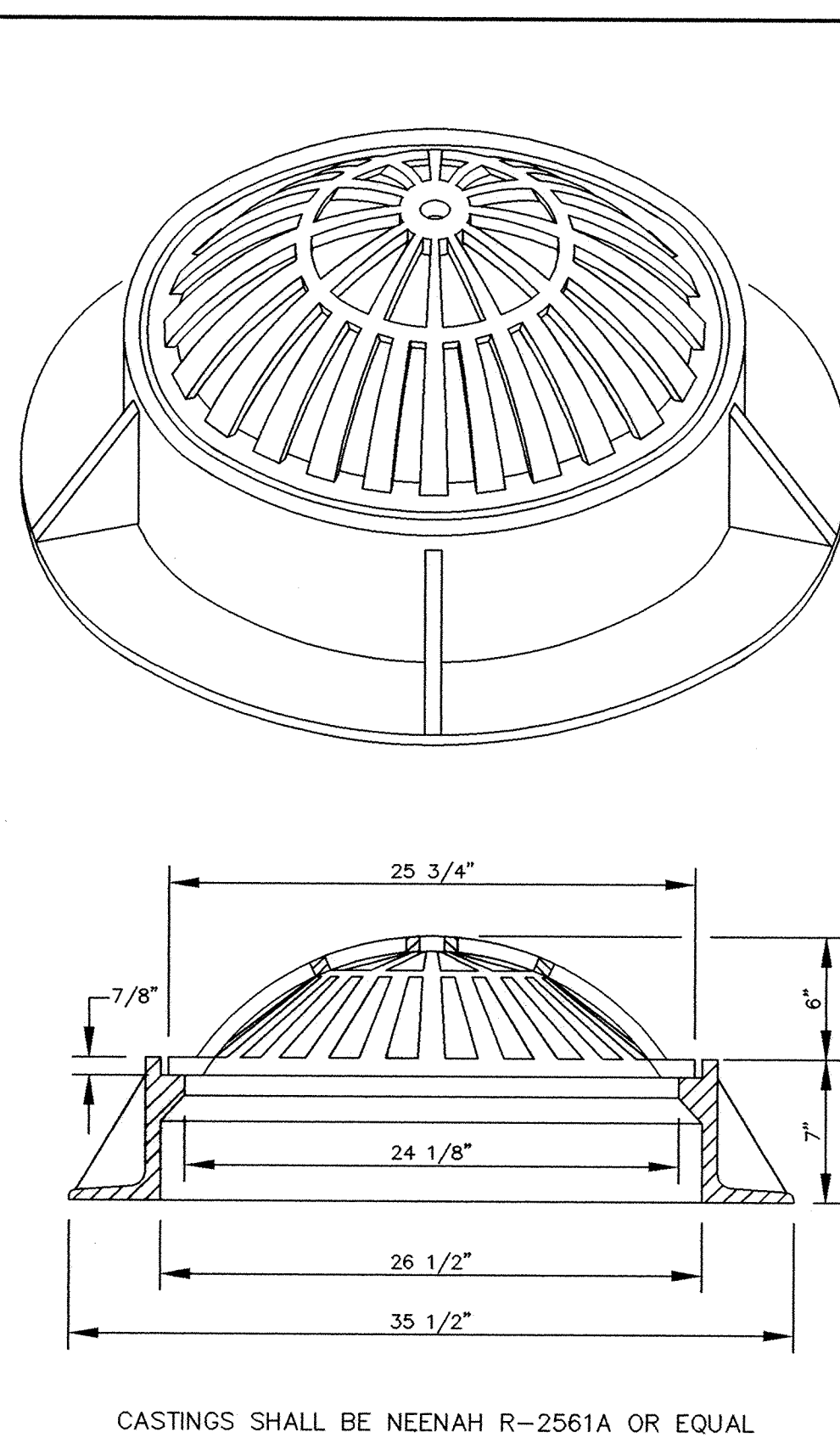
STANDARD MANHOLE



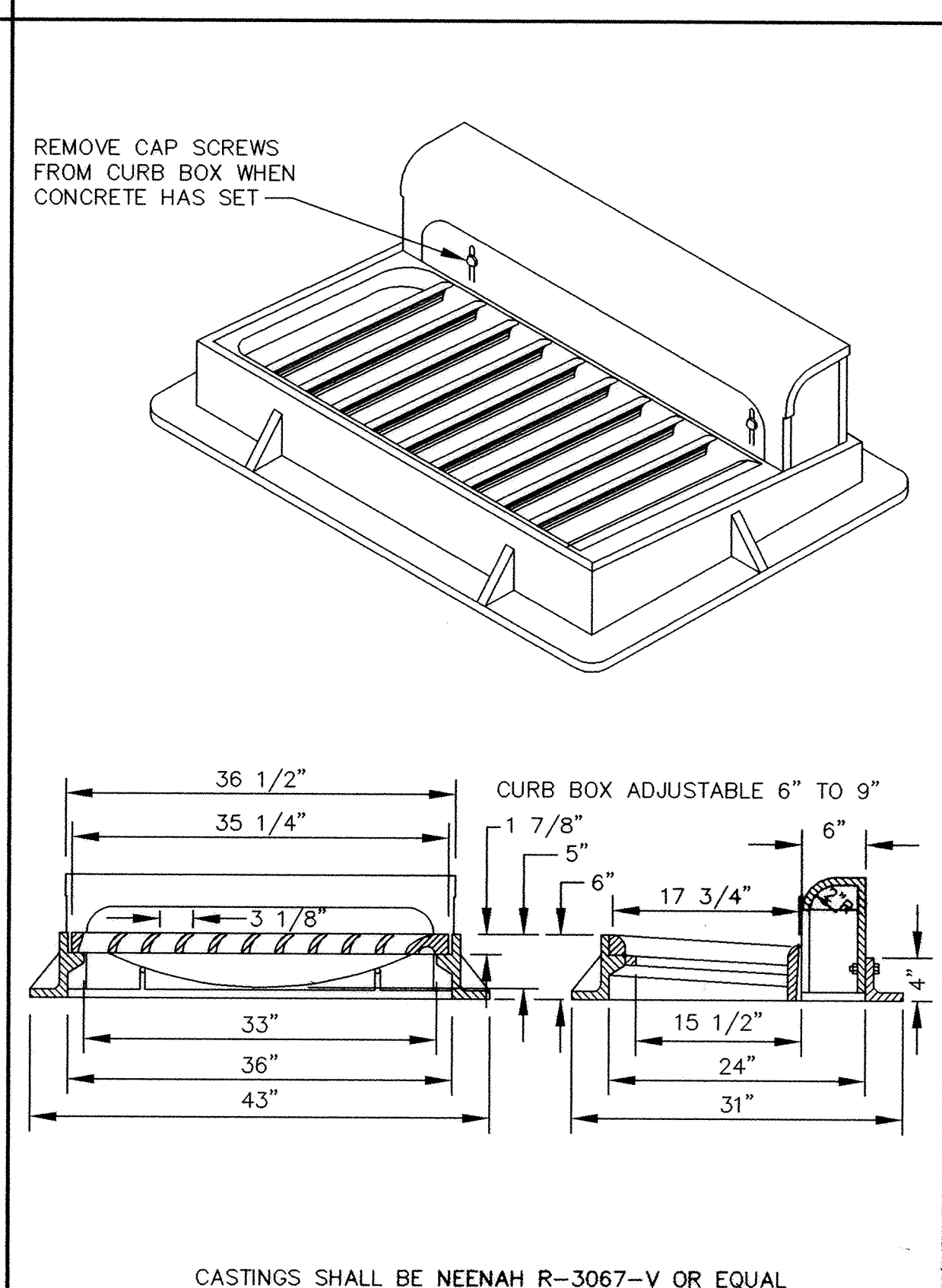
CAPSKIMMER INLET ASSEMBLY



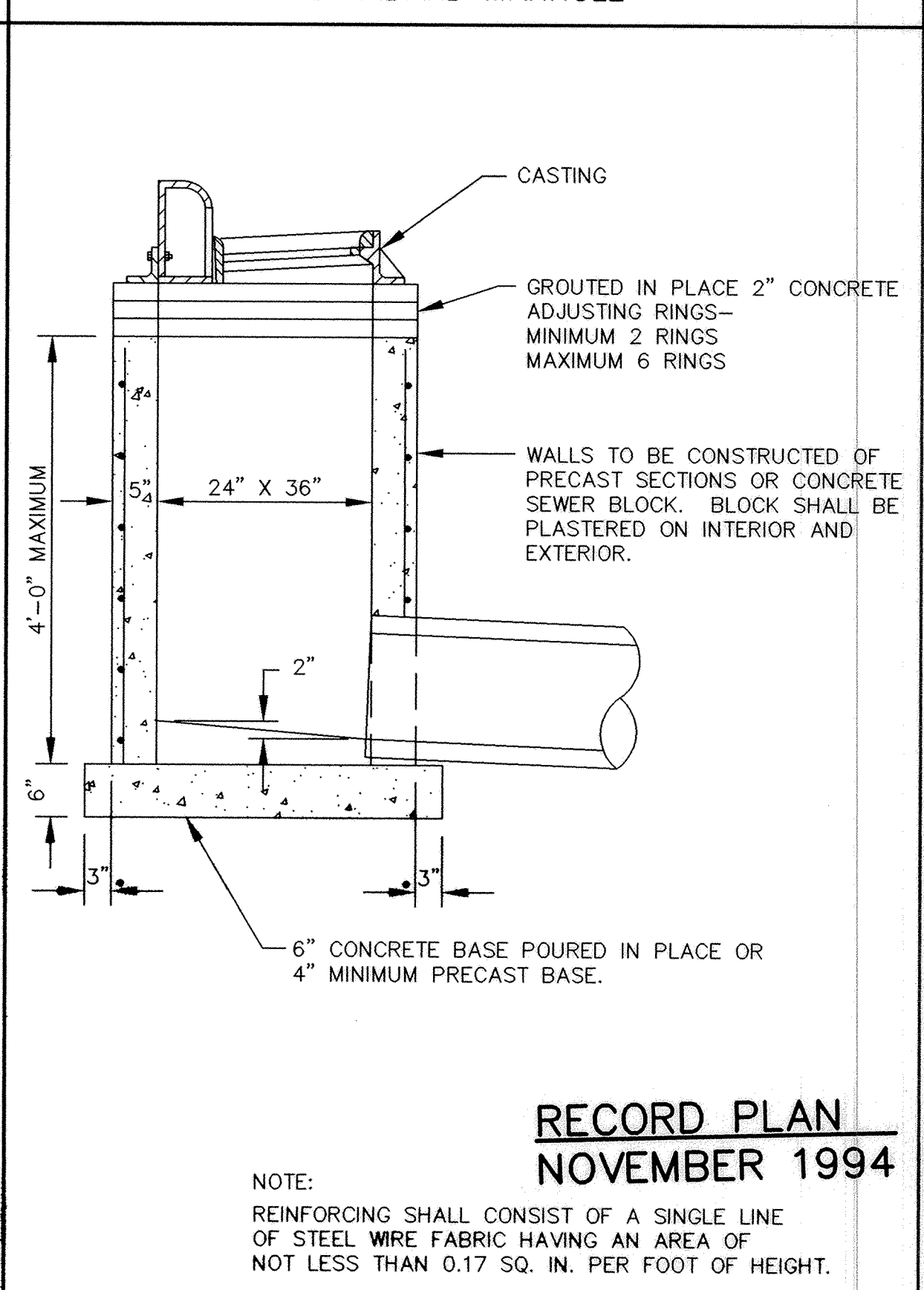
CONCRETE PIPE JOINT TIES



BEEHIVE CASTING



STANDARD INLET CASTING



SHALLOW CATCH BASIN

ER194D3

I HEREBY CERTIFY THAT THIS PLAN, SPECIFICATION, OR REPORT WAS PREPARED BY ME OR UNDER MY DIRECT SUPERVISION AND THAT I AM A DULY REGISTERED PROFESSIONAL ENGINEER UNDER THE LAWS OF THE STATE OF MINNESOTA.

*Mark J. Graham*

DATE 7/27/94 REG. NO. 19130

**MSA**  
CONSULTING ENGINEERS

1326 ENERGY PARK DRIVE  
ST. PAUL, MINNESOTA 55108  
(612) 644-4389

9800 SHELARD PARKWAY  
MINNEAPOLIS, MINNESOTA 55441  
(612) 546-0432

DATE	DESCRIPTION	DESIGNED
		CHECKED
		DRAWN TPC
		GRAPHIC SCALE
		0 HORIZ. N/A
		0 VERT. N/A

CITY OF ELK RIVER COUNTRY CROSSING STORM SEWER DETAILS	
DATE <u>MAR 1994</u>	SHEET <u>19</u> OF <u>20</u> SHEETS
PROJECT NO. <u>230-194</u>	