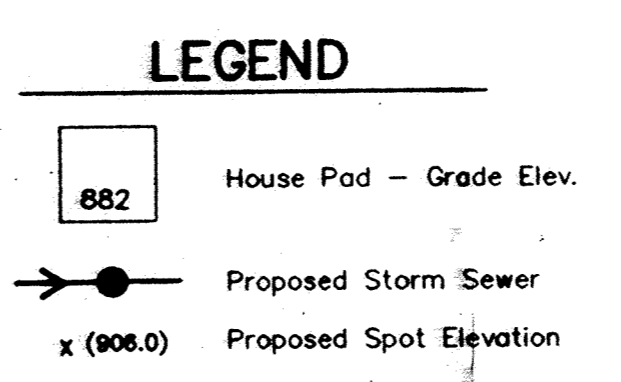
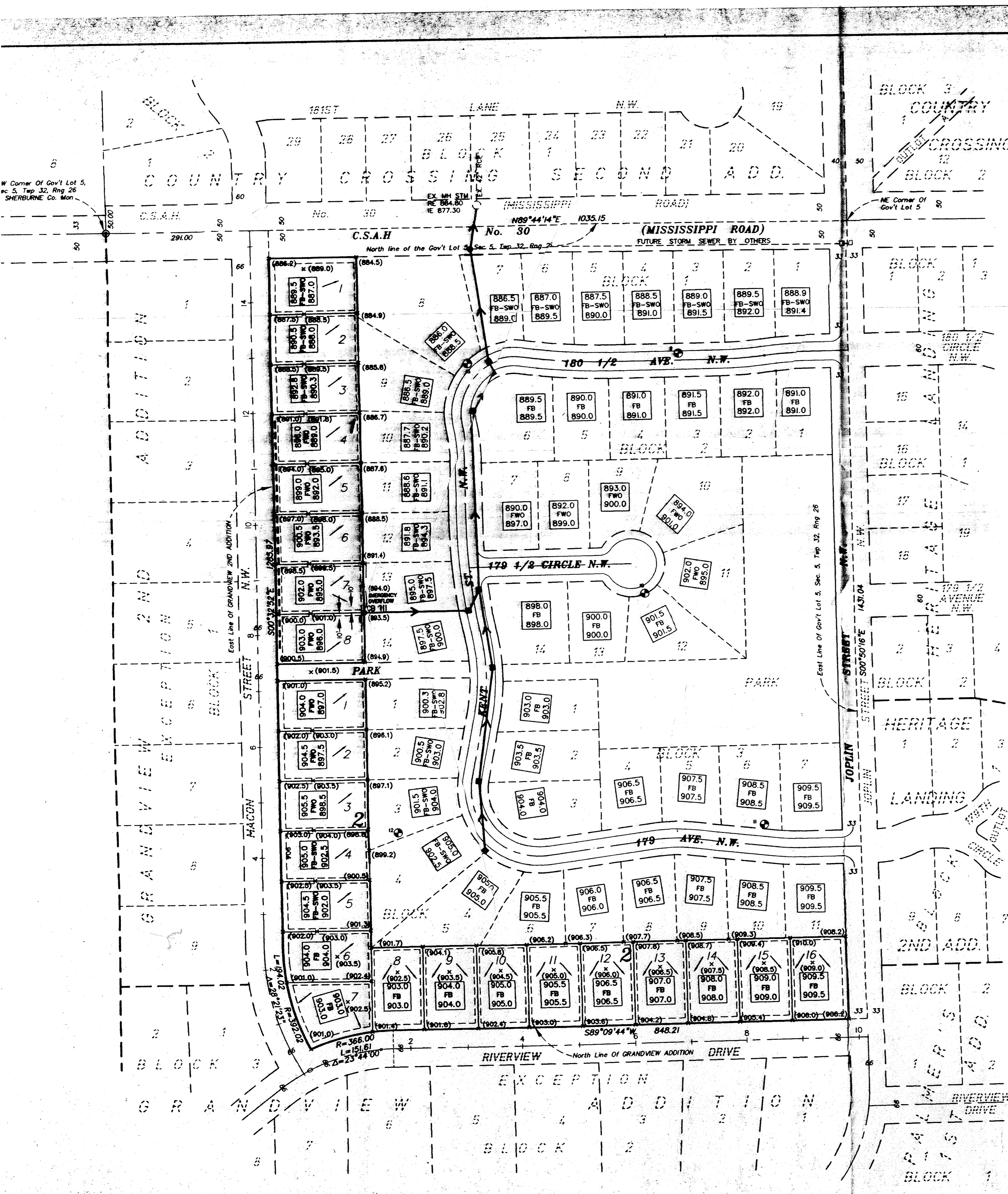
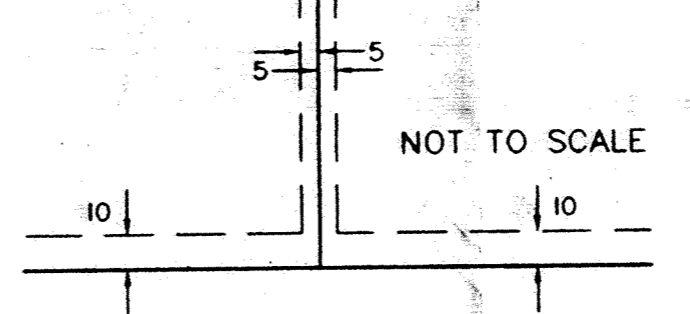


W. Corner Of Gov't Lot 5,
Sec. 5, Twp. 32, Rng. 26
SHERBURNE Co. Minn.

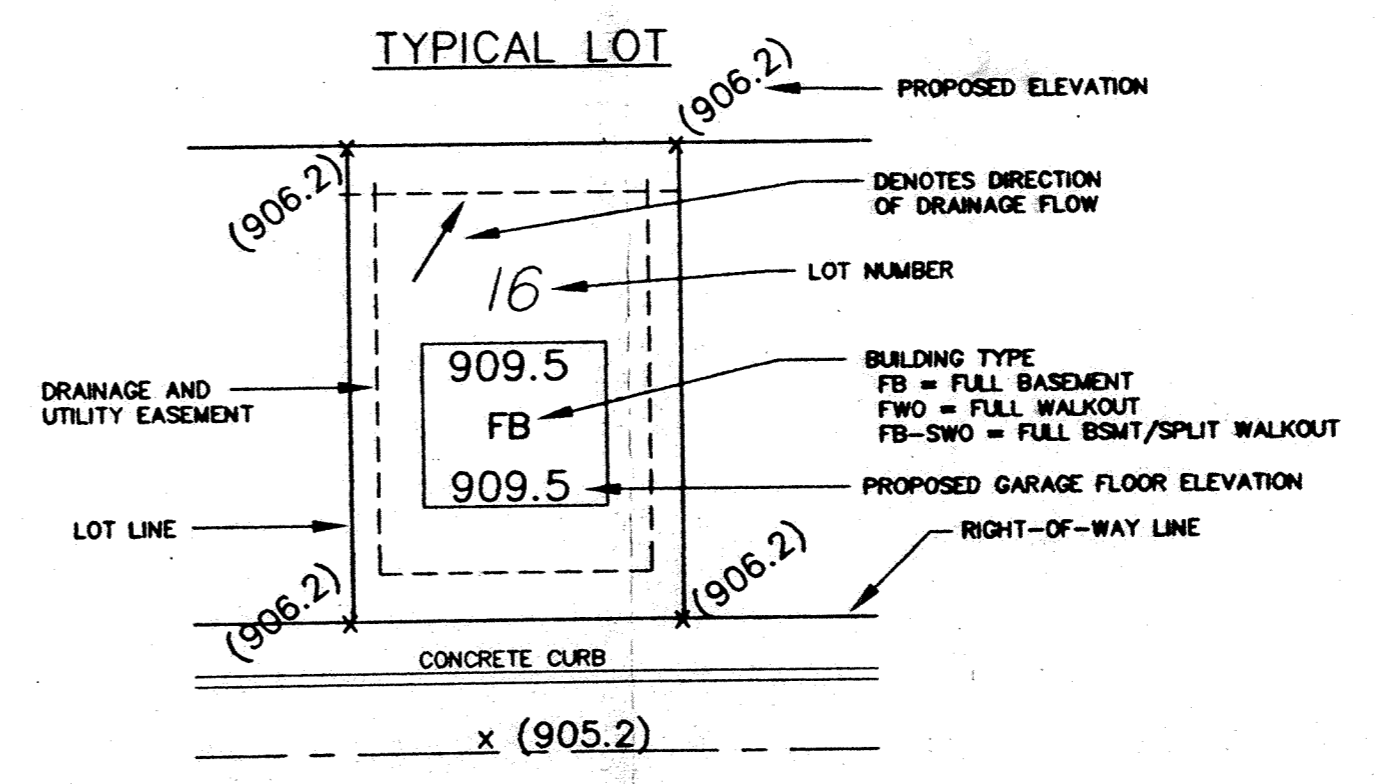


BUILDING SETBACKS
 35' FROM ROAD RIGHT-OF-WAY
 10' FROM REAR YARDS
 10' FROM SIDE YARDS

Plotted Drainage and Utility Easements are shown thus:



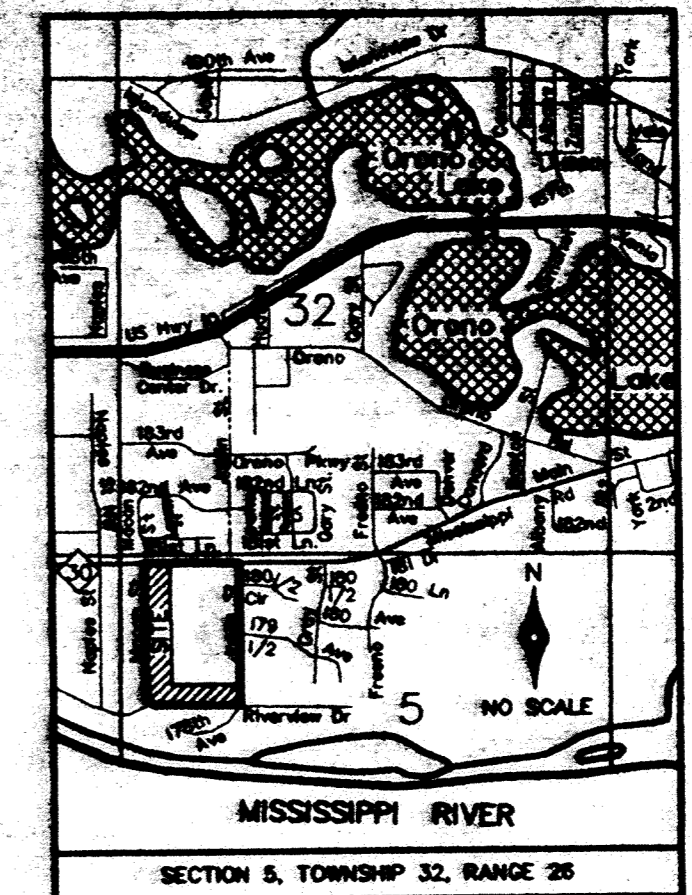
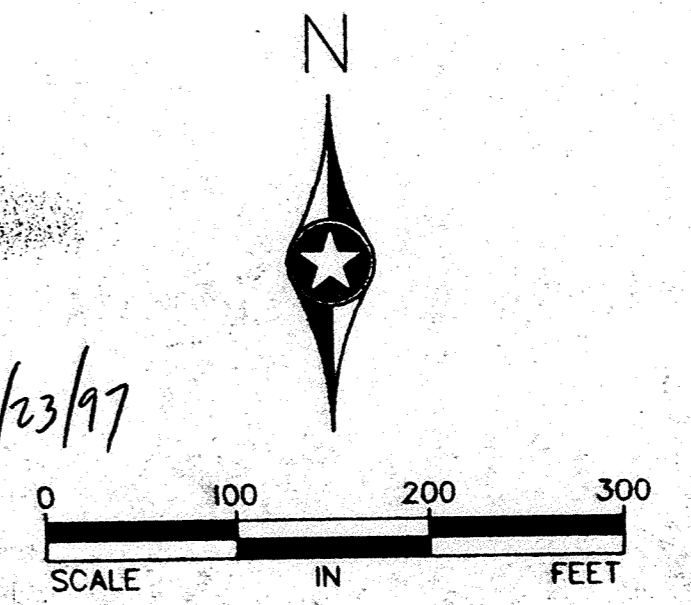
Being 10 feet in width and adjoining right-of-way lines, unless otherwise indicated, also being 5 feet in width and adjoining lot lines, unless otherwise indicated, as shown on the plat.



STORM SEWER SCHEDULE

STRUCTURE	RIM ELEV.	INVERT ELEV.
CB III	893.5	891.0

APPROVED
 H.L. Green Co.
 Subd. Eng. 10/23/97



REV. NO.	DATE	DESCRIPTION
1	10/16/97	EMERGENCY OVERFLOW

I hereby certify that this plan was prepared by me or under my direct supervision and that I am a duly Registered Engineer under the laws of the State of Minnesota.

Signed: *[Signature]*
 Date: 10/6/97 Reg. No. 20383

John Oliver & Associates, Inc.
 Civil Engineering, Land Surveying, Land Planning
 580 Dodge Avenue
 Elk River, Minnesota 55330
 (612)441-2072 (FAX)441-5665
 201 W. Transcona Trail, Suite 200
 Elk River, Minnesota 55337
 (612)894-3045 (FAX)894-3049

Country Crossing Fourth Addition,
 ELK RIVER, MN
 For:
COUNTRY RIDGE PARTNERSHIP
 DEVELOPMENT
 PLAN

SHEET NO. _____ OF _____