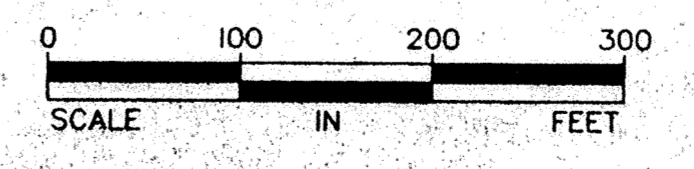
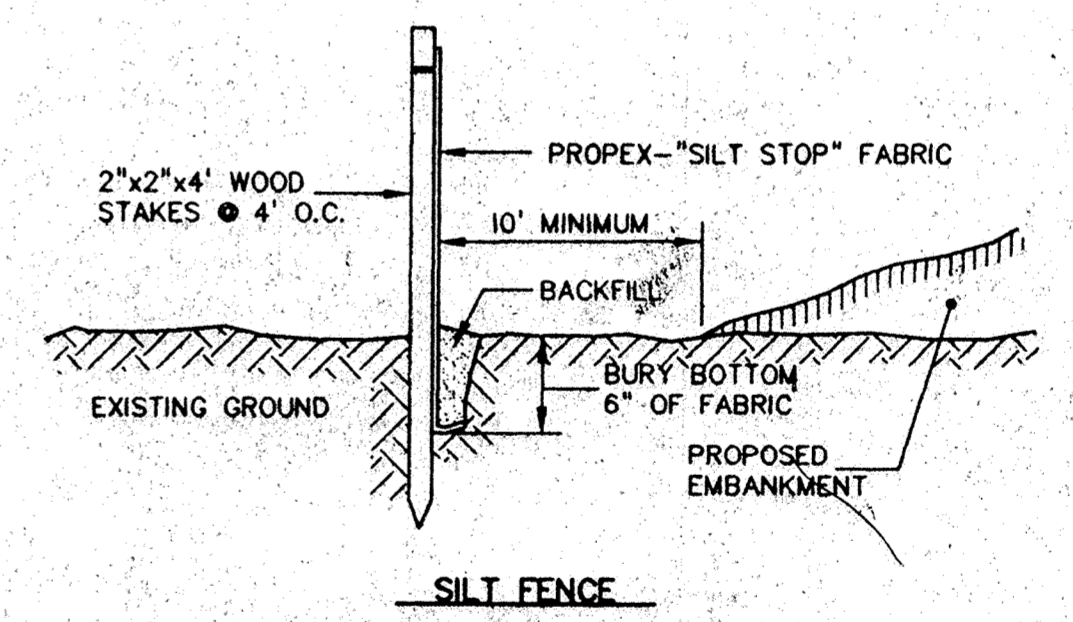
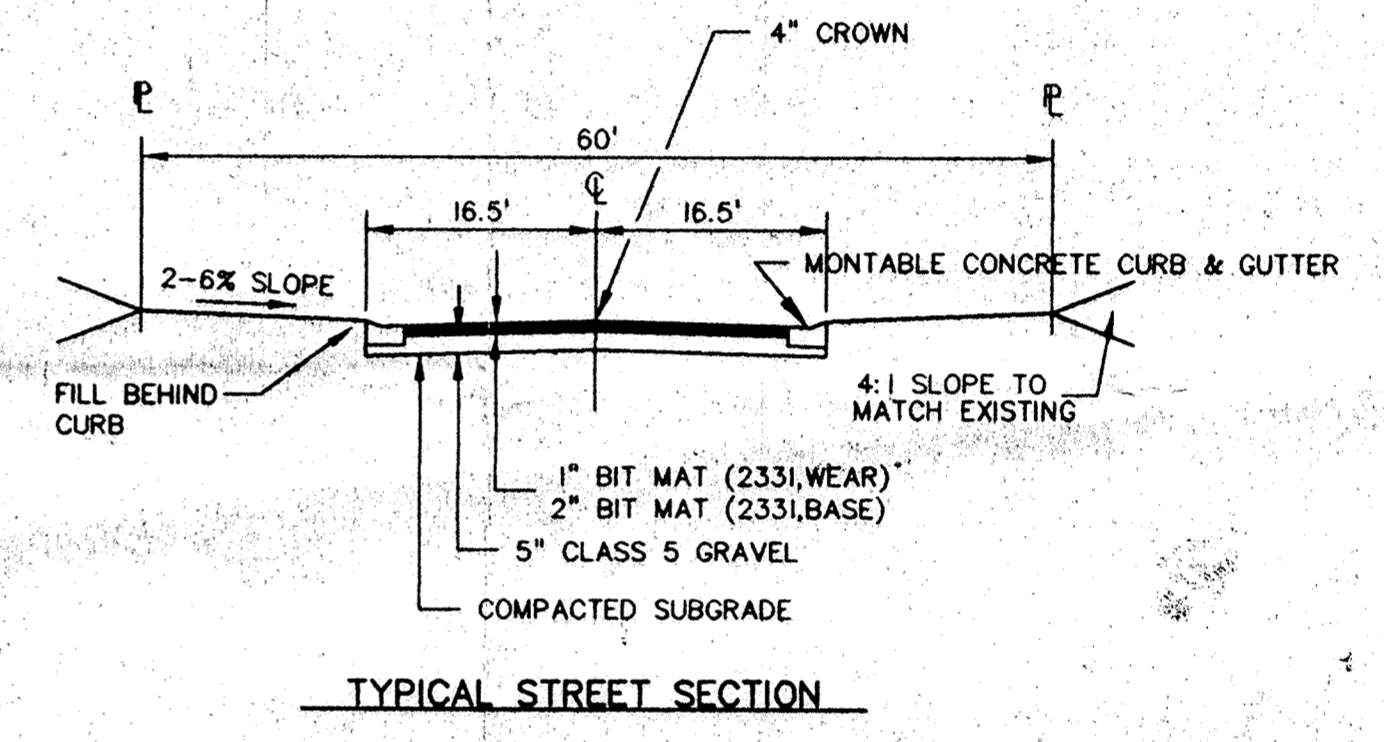


- LEGEND**
- 882 Existing Contours
 - 882 Proposed Contours
 - Silt Fence
 - 882 House Pad - Grade Elev.
 - Proposed Storm Sewer
 - Drainage Direction
 - Soil Boring
 - Grading Limits
 - x (906.0) Proposed Spot Elevation



APPROVED

REV. NO.	1	DATE	8/9/96	DESCRIPTION	GRADING & HSE. ELEV.
DATE:	7/30/96	DESIGN:	TM	I hereby certify that this plan was prepared by me or under my direct supervision and that I am a duly Registered Engineer under the laws of the State of Minnesota.	
DRAWN BY:	SIF & TGL	CHECKED BY:	TM	Signed: <i>John Oliver</i> Reg. No. 20383	
DWG:	CC3-GRAD	TEXT:		Date: 7/30/96 File No.: 6719.40-03	
<p>John Oliver & Associates, Inc. Civil Engineering, Land Surveying, Land Planning 680 Dodge Avenue Elk River, Minnesota 55330 (612)441-2072 (FAX)441-6665 201 W. Travelers Trail, Suite 200 Burnsville, Minnesota 55337 (612)894-3045 (FAX)894-3049</p>					
<p>Country Crossing Third Addition ELK RIVER, MN For: COUNTRY RIDGE PARTNERSHIP Grading, Drainage, & Erosion Control</p>					
SHEET NO. 1 OF 1					