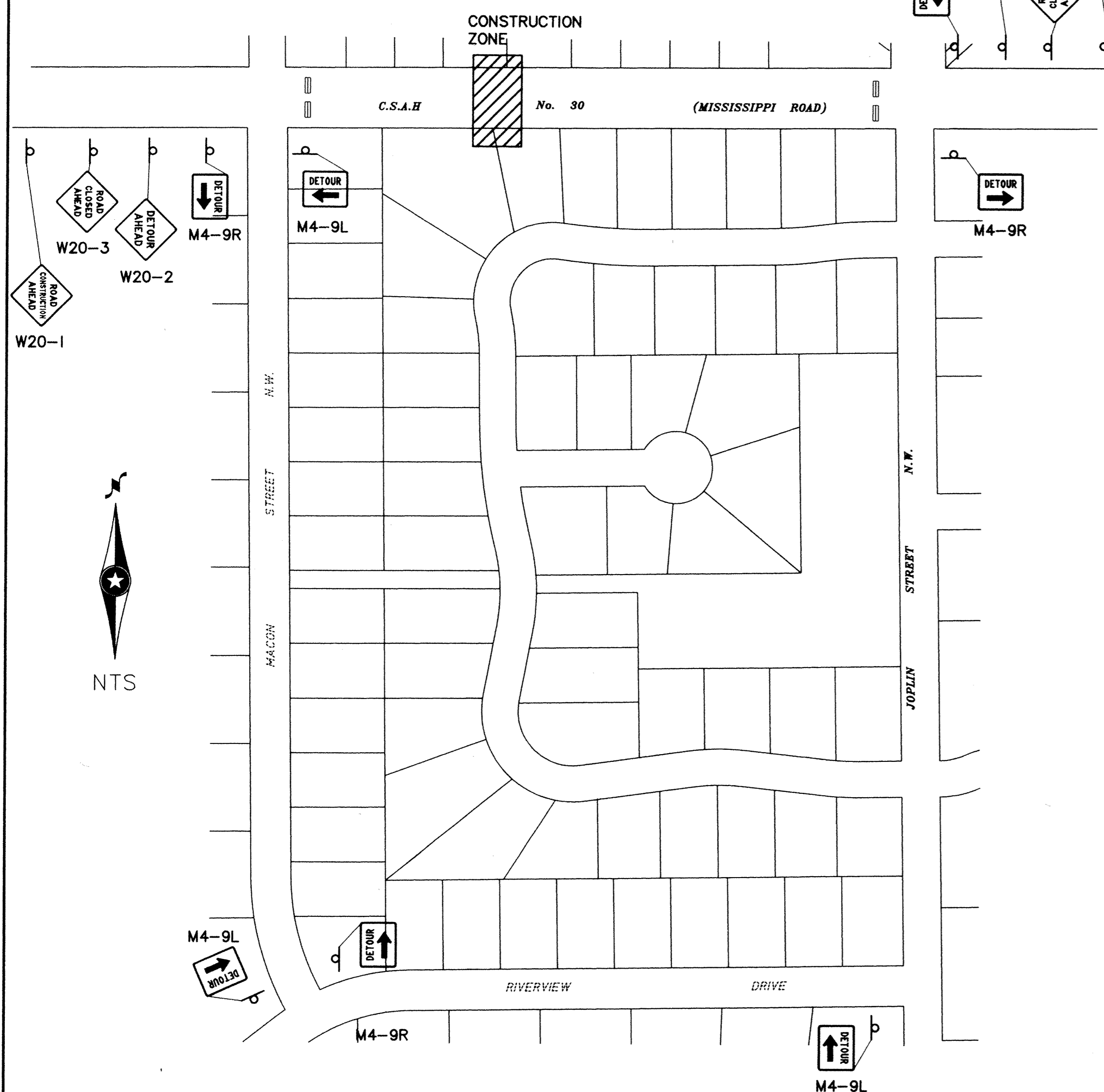


PRIME CONTRACTOR/UTILITIES: C.W. HOULE, INC.
 CURB & GUTTER: SCHMIDT CURB CO.
 STREETS: BAUERLY BROS., INC.
 INSPECTION: RALPH BADER, HOWARD R. GREEN CO.
 SURVEY: JOHN OLIVER & ASSOCIATES, INC.
 EARTHWORK: NORTH PINE AGGREGATE, INC.
 RECORD DRAWINGS: FRED FRITSCHEL, JOA
 CONSTRUCTED: UTILITIES 1996, STREETS 1997

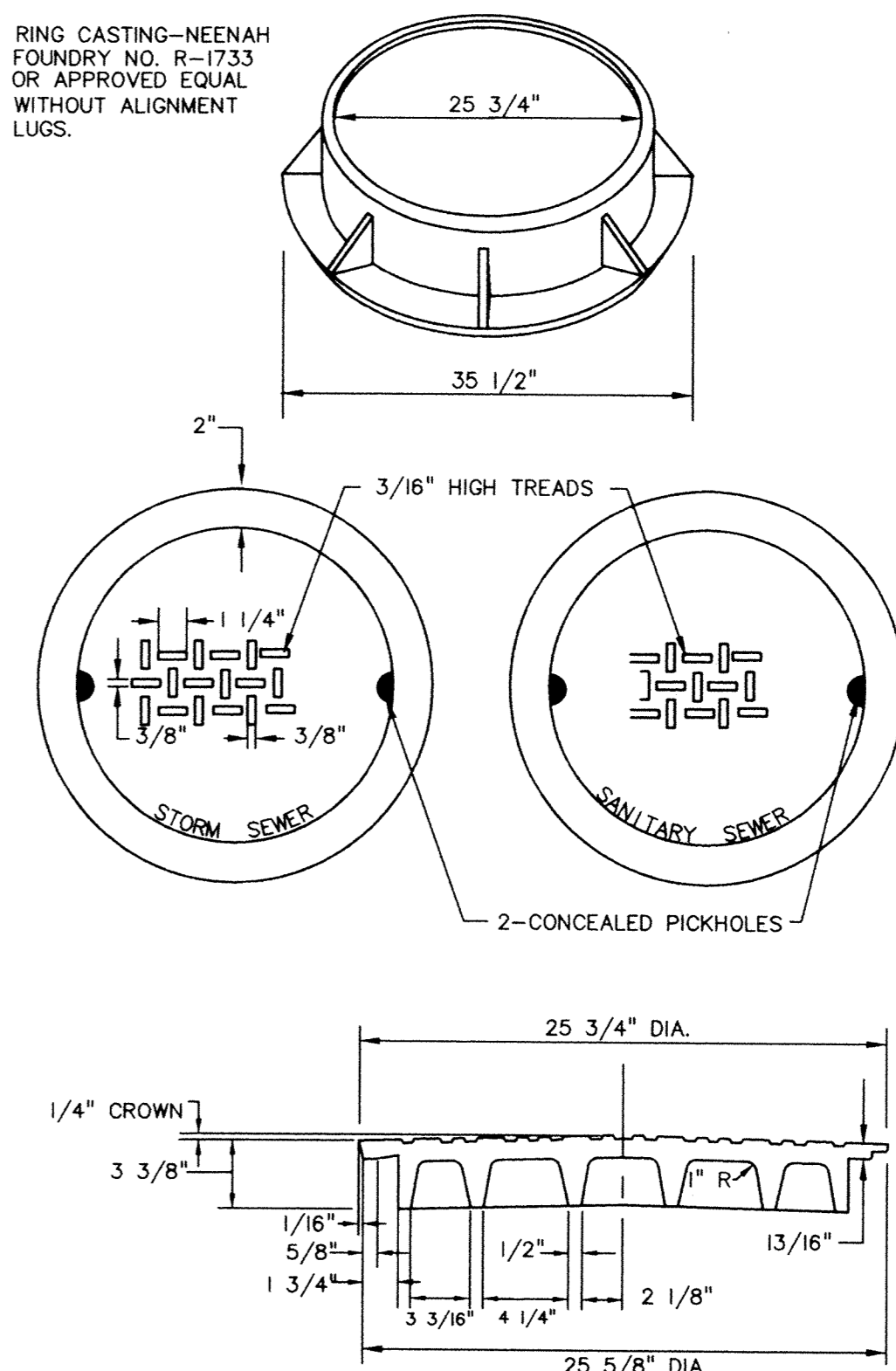
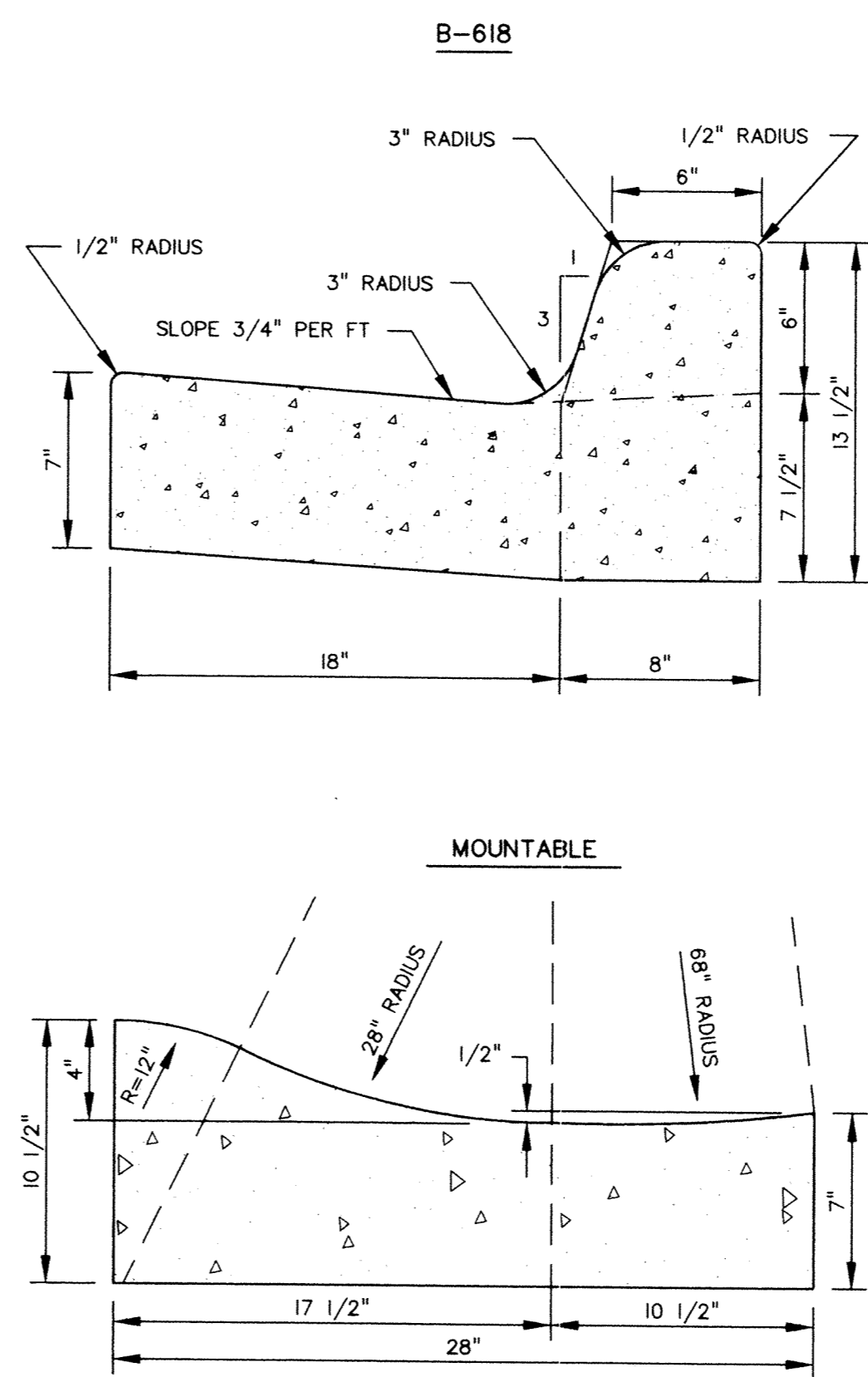
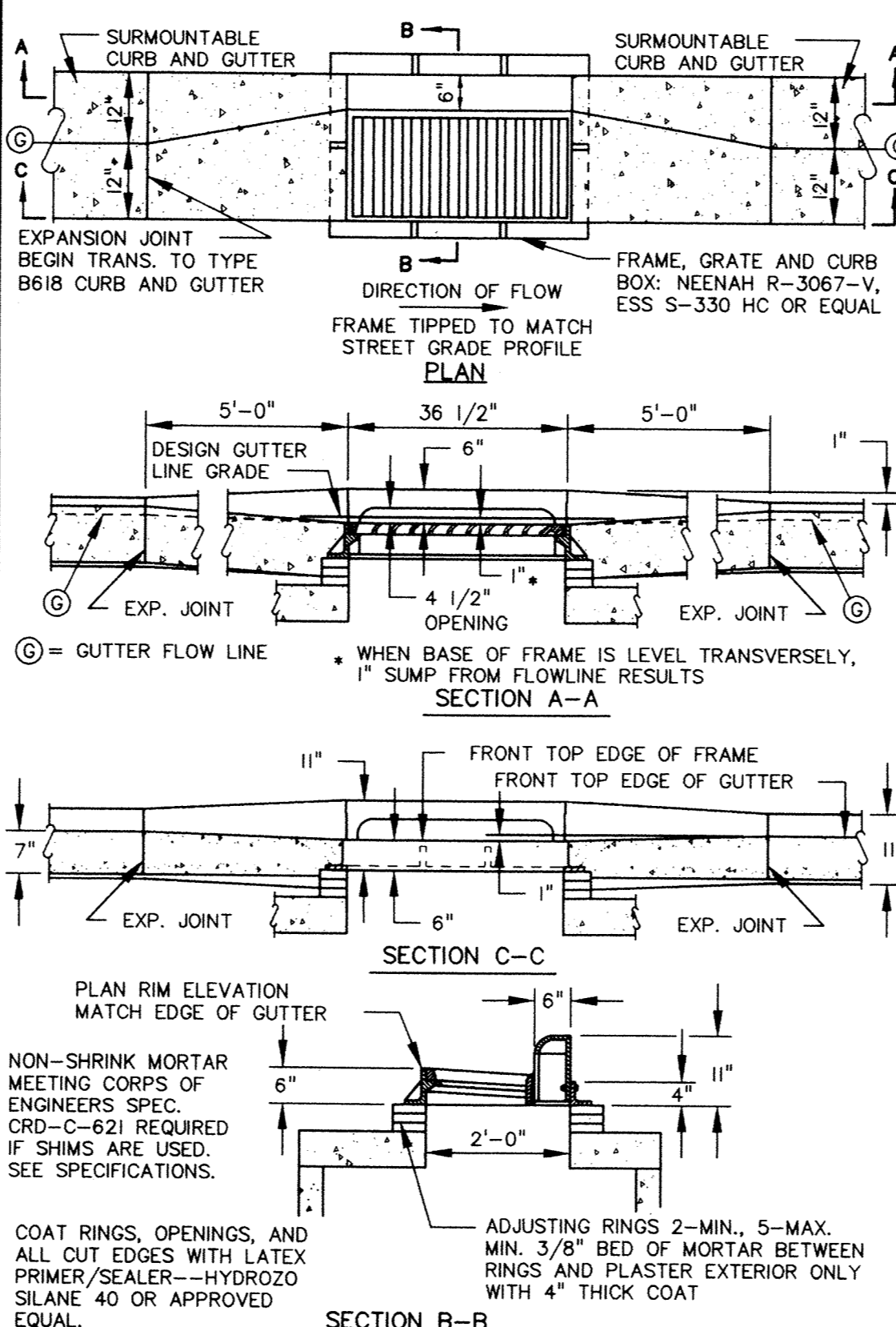
TRAFFIC CONTROL PLAN

LEGEND

- PROPOSED SIGNS
- PROPOSED SIGN TYPE
- 2-TYPE 3 BARRICADES



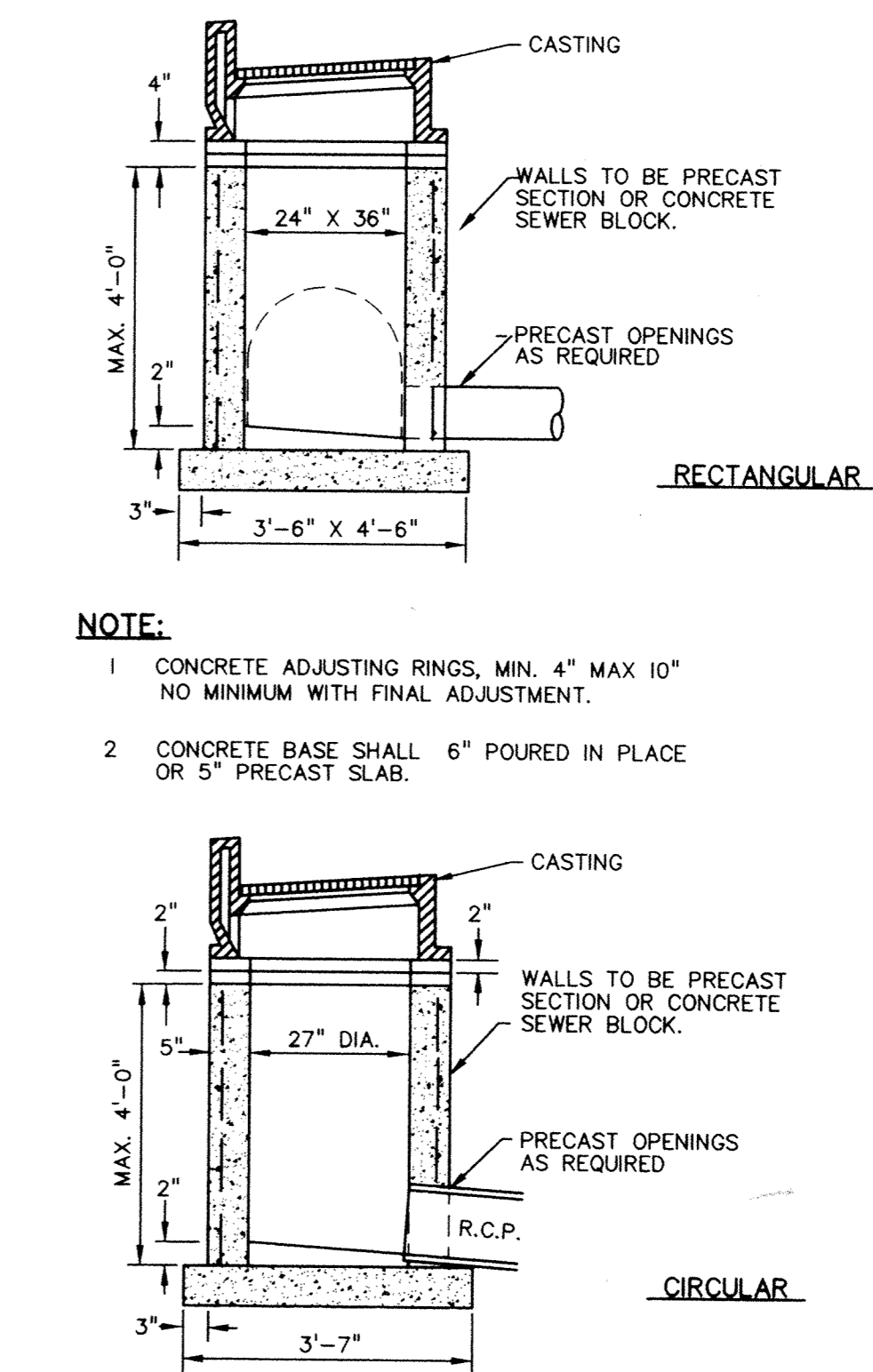
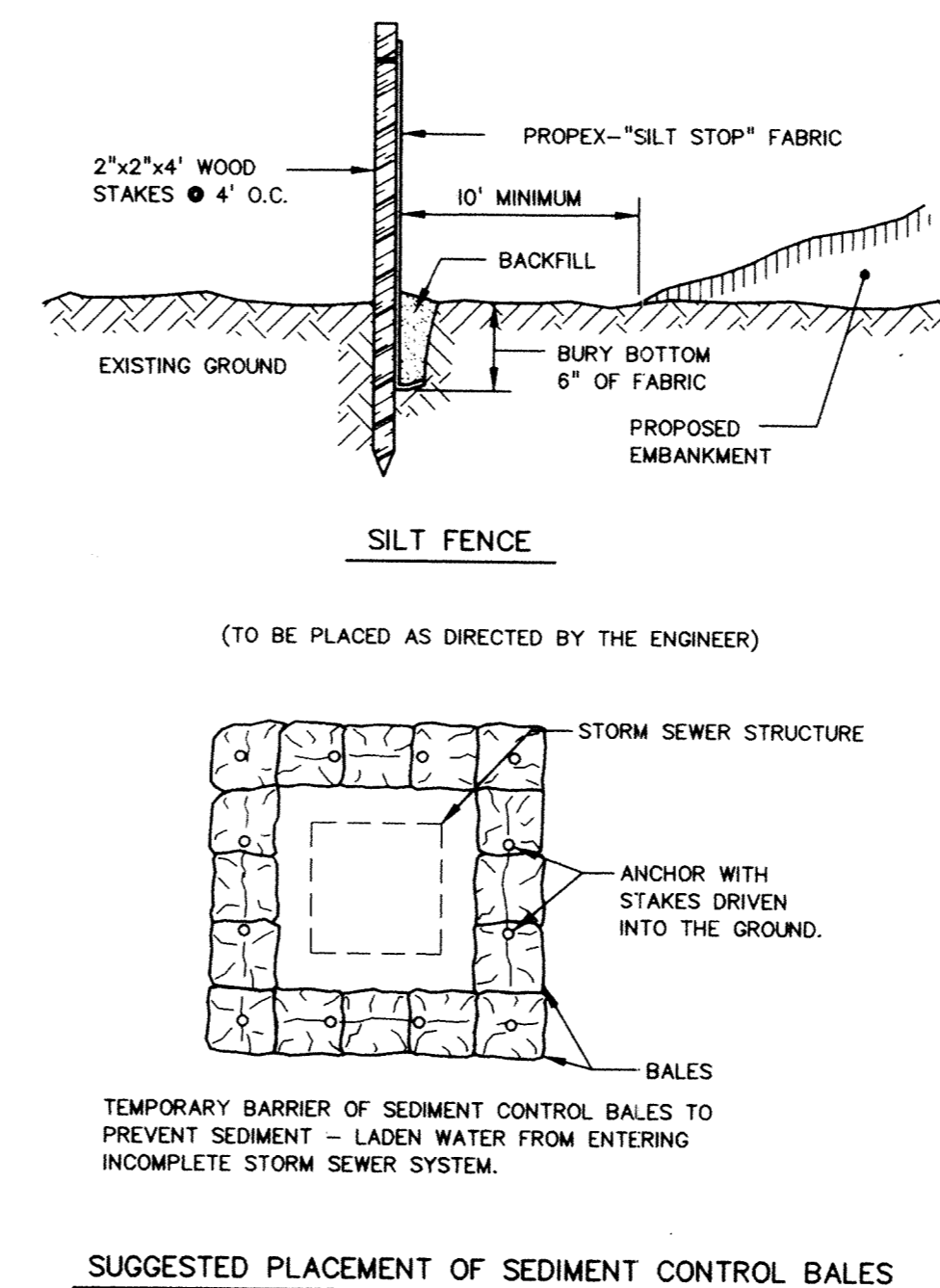
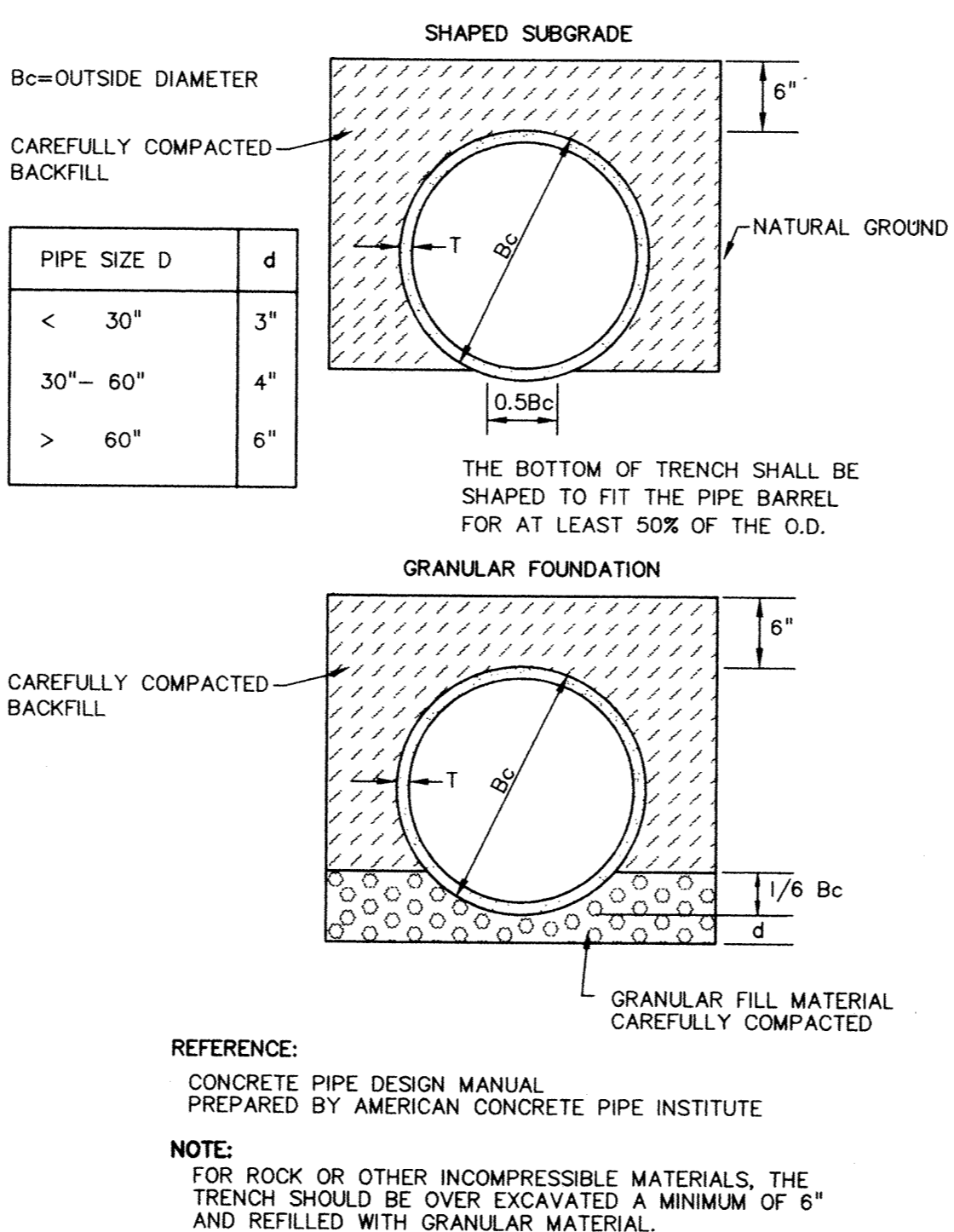
RECORD DRAWINGS



CATCH BASIN FRAME PLACEMENT (D-08)

CONCRETE CURB AND GUTTER (E-02)

STANDARD MANHOLE CASTINGS (C-01)



COUNTRY CROSSING THIRD ADDITION DETAILS & TRAFFIC CONTROL PLAN

SHEET NO. 6 OF 8

John Oliver & Associates, Inc.
 Civil, Engineering, Land Surveying, Land Planning
 680 Dodge Avenue
 Elk River, MN 55330
 (612)441-8072 (FAX)441-8685
 201 W. Trappers Trail, Suite 200
 Burnsville, MN 55337
 (612)894-3045 (FAX)894-3049

I hereby certify that this plan was prepared by me or under my direct supervision and that I am a duly Registered Professional Engineer under the laws of the State of Minnesota.
 Signed: [Signature]
 Date: 10/3/96 Reg. No. 20383

REV. NO.	DATE	DESCRIPTION
1	1/29/98	Record Drawings

DRAWING NUMBER
 COUNTY 96
 DRAWING NUMBER
 COUNTY 96
 DRAWING NUMBER
 COUNTY 96