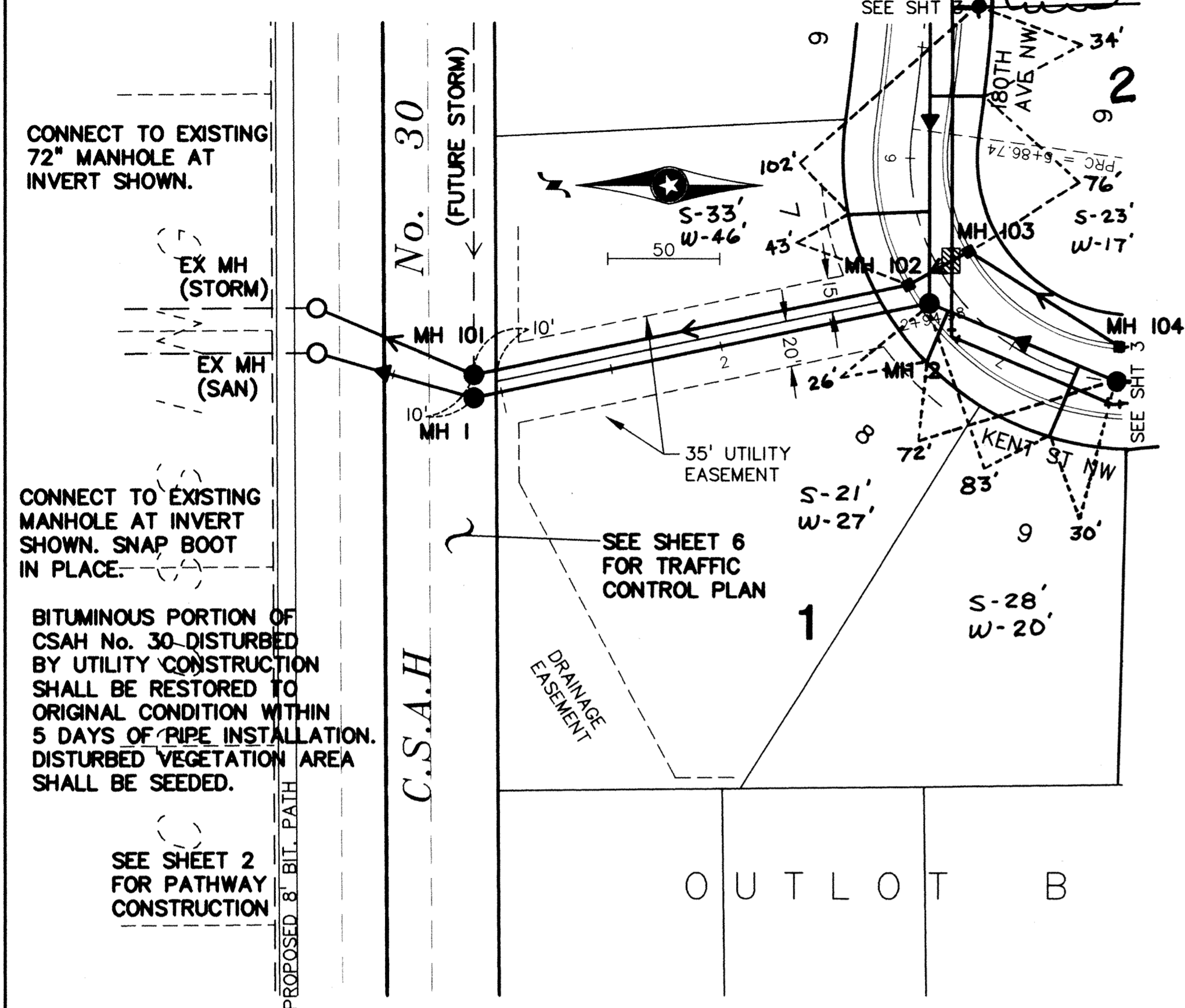
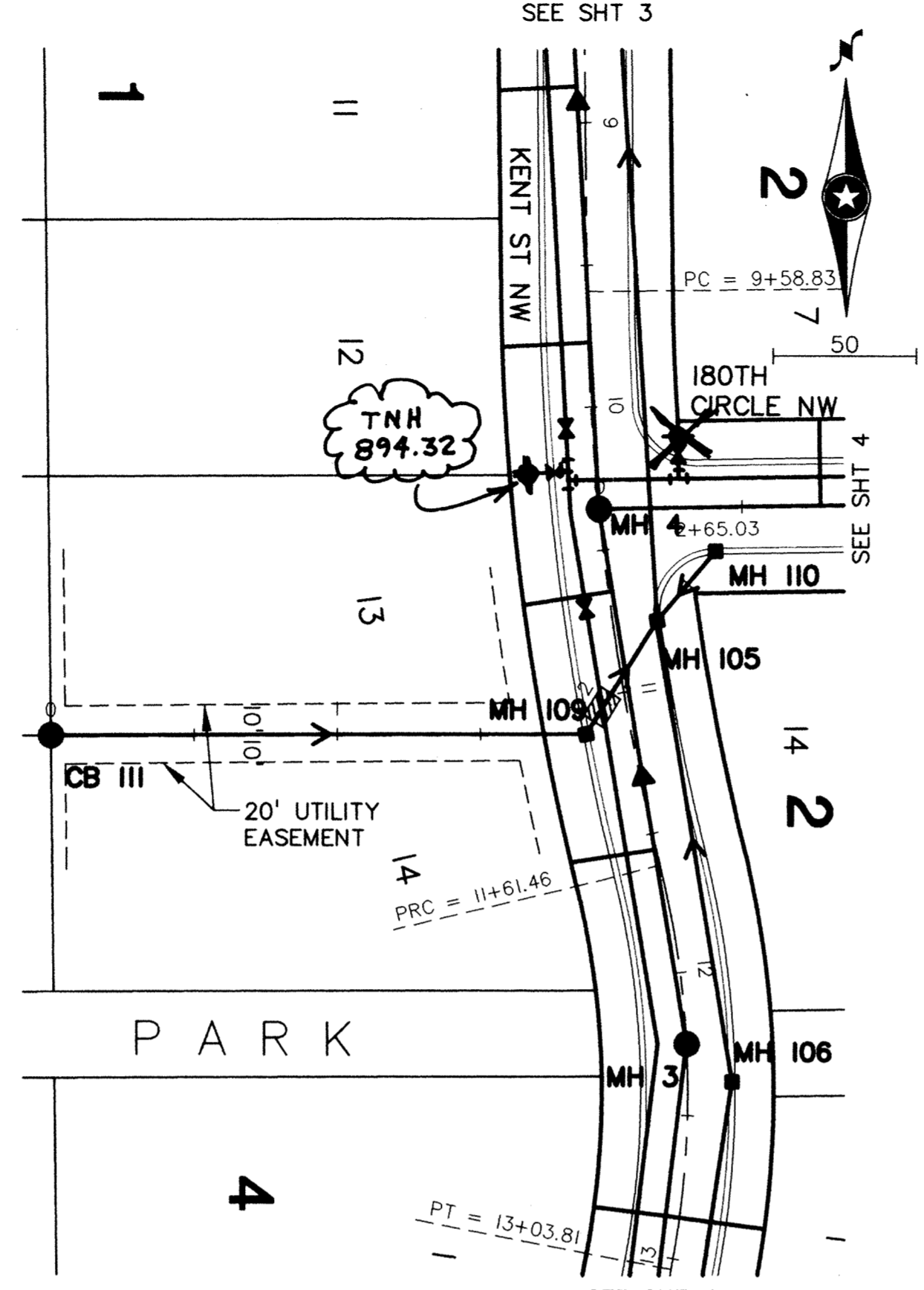


STORM & SANITARY

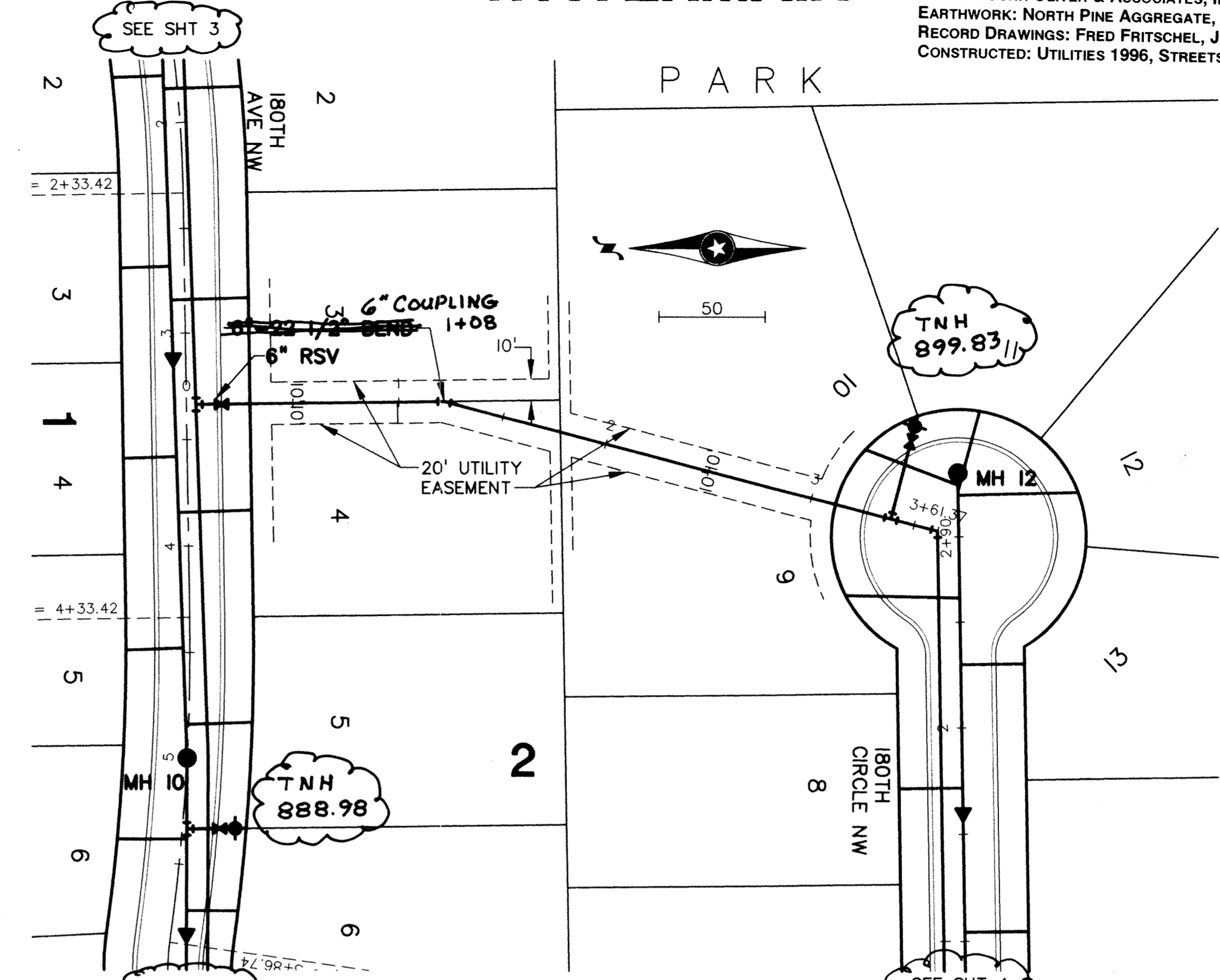


STORM SEWER



RECORD DRAWINGS

WATERMAIN



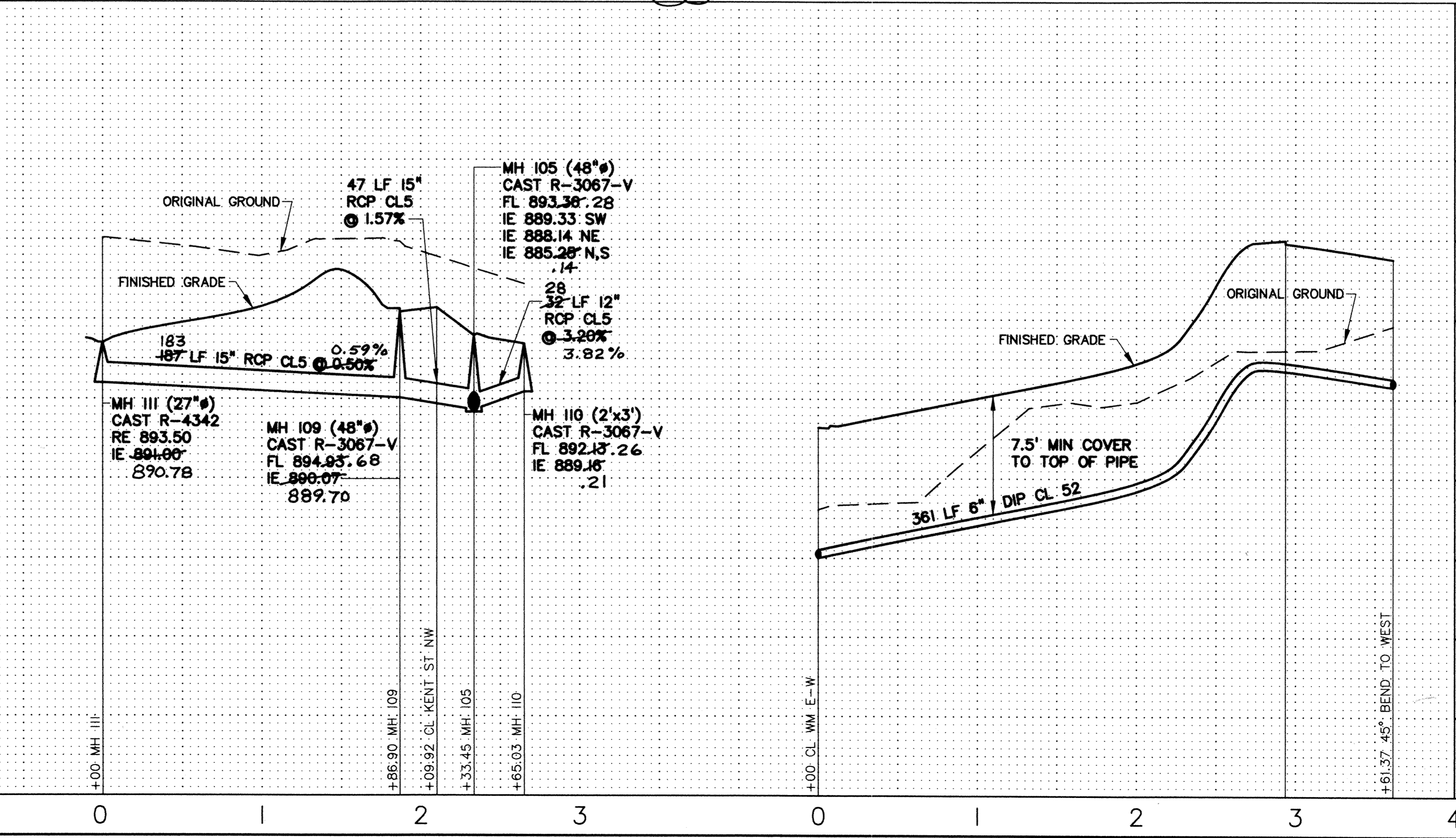
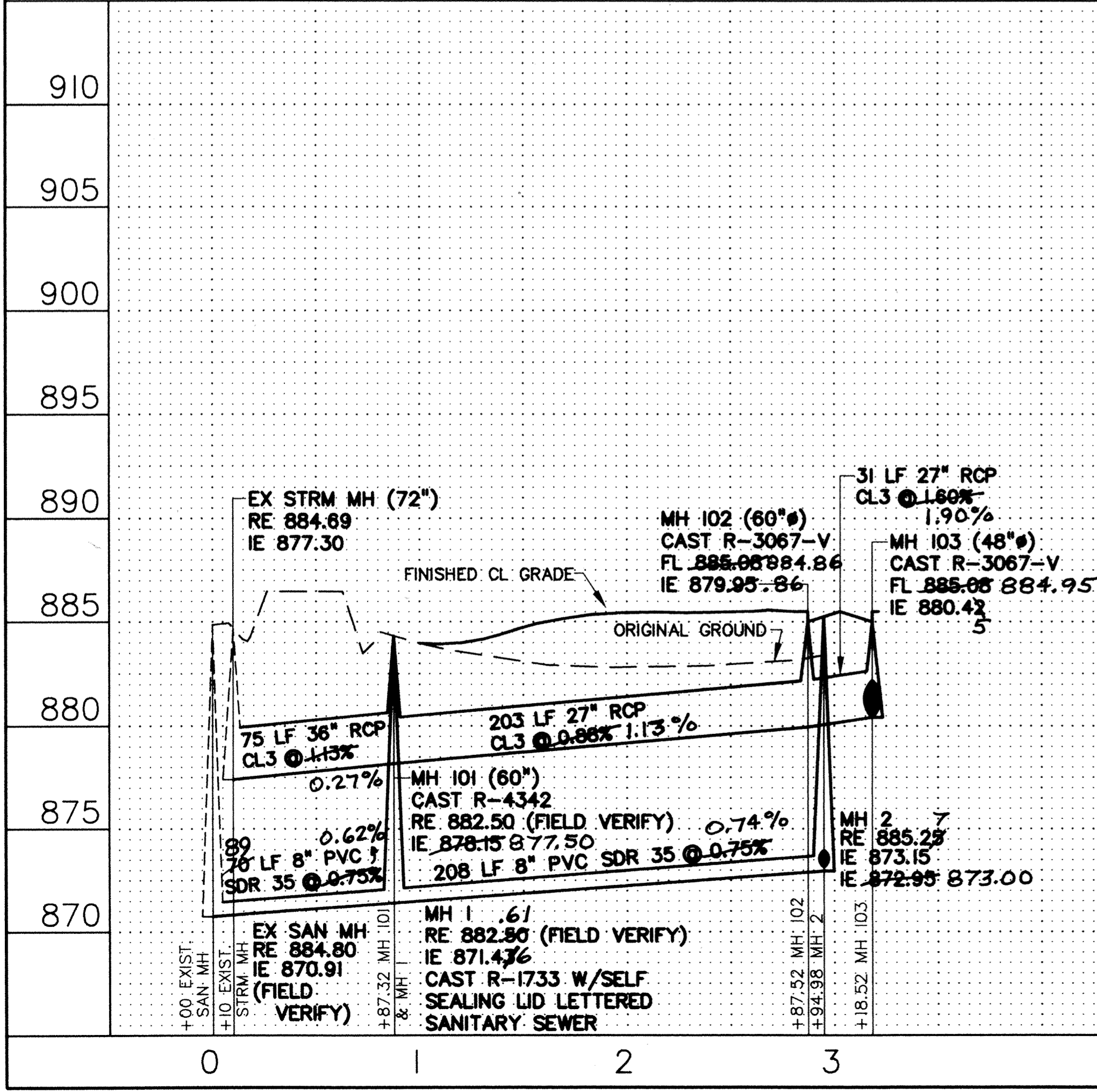
PRIME CONTRACTOR/UTILITIES: C.W. HOULE, INC.
 CURB & GUTTER: SCHMIDT CURB CO.
 STREETS: BAUERLY BROS., INC.
 INSPECTION: RALPH BADER, HOWARD R. GREEN CO.
 SURVEY: JOHN OLIVER & ASSOCIATES, INC.
 EARTHWORK: NORTH PINE AGGREGATE, INC.
 RECORD DRAWINGS: FRED FRITSCHER, JOA
 CONSTRUCTED: UTILITIES 1996, STREETS 1997

REV. NO.	DATE	DESCRIPTION
1	11/28/98	RECORD DRAWINGS

DATE:	9/4/96
DESIGN BY:	DC/TM
DRAWN BY:	BG
CHECKED BY:	TM
DWG FILE:	CC3-PP
TEXT FILE:	NONE
FILE NO.:	6719.40-03

I hereby certify that this plan was prepared by me or under my direct supervision and that I am a duly Registered Professional Engineer under the laws of the State of Minnesota.

Signed: *[Signature]*
 Date: 10/3/96 Reg. No. 20383



910
905
900
895
890
885
880
875
870

COUNTRY CROSSING THIRD ADDITION
 ELK RIVER, MN
 COUNTRY RIDGE PARTNERSHIP
 SANITARY SEWER, WATERMAIN,
 STORM SEWER AND STREET PLAN
 UTILITY EASEMENTS

John Oliver & Associates, Inc.
 Civil Engineering, Land Surveying, Land Planning
 560 Dodge Avenue
 Elk River, MN 55330
 (612)441-2072 (FAX)441-5665
 201 W. Travelers Trail, Suite 200
 Burnsville, MN 55337
 (612)894-3045 (FAX)894-3049

SHEET NO.
 5 OF 8