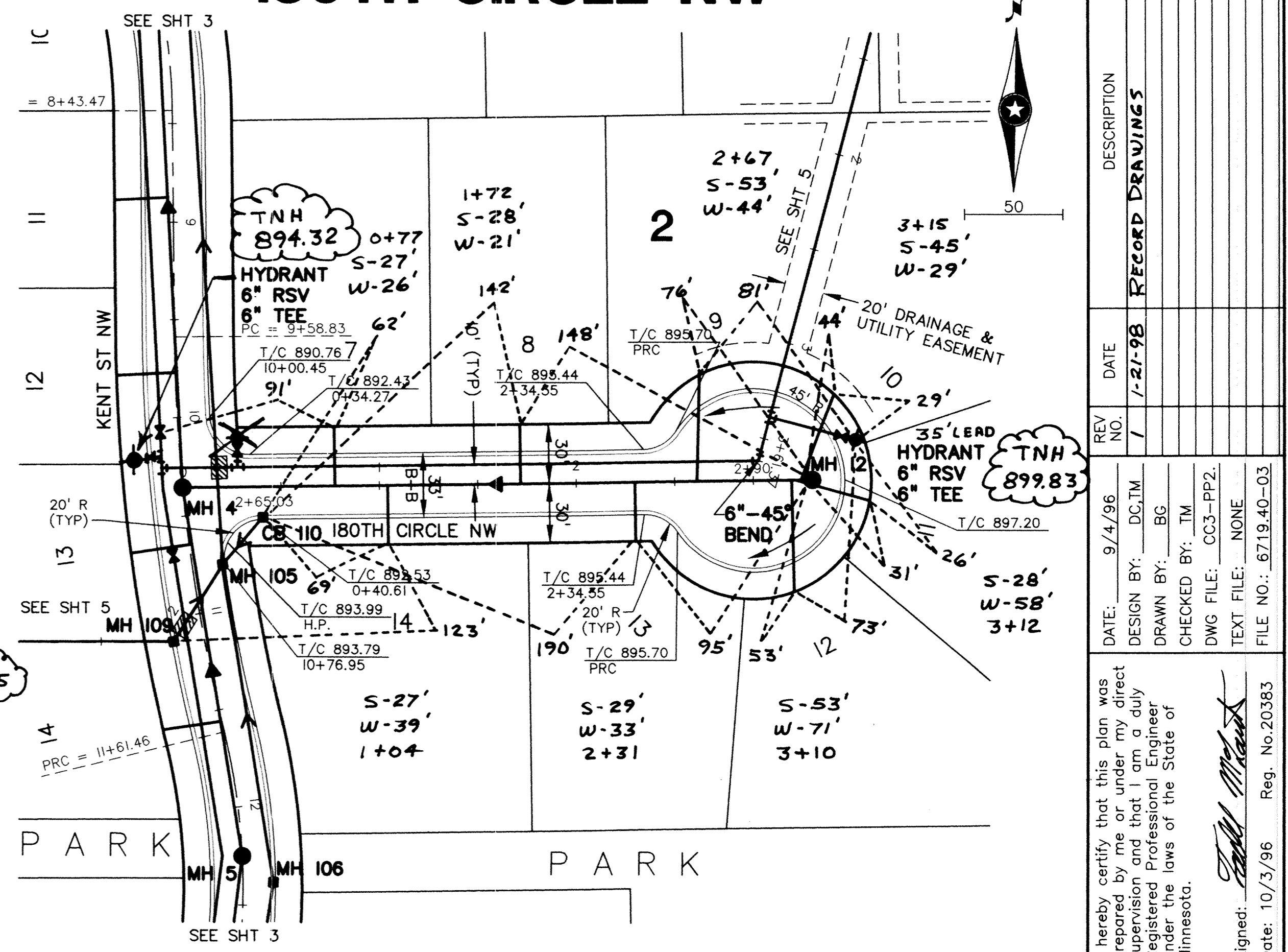
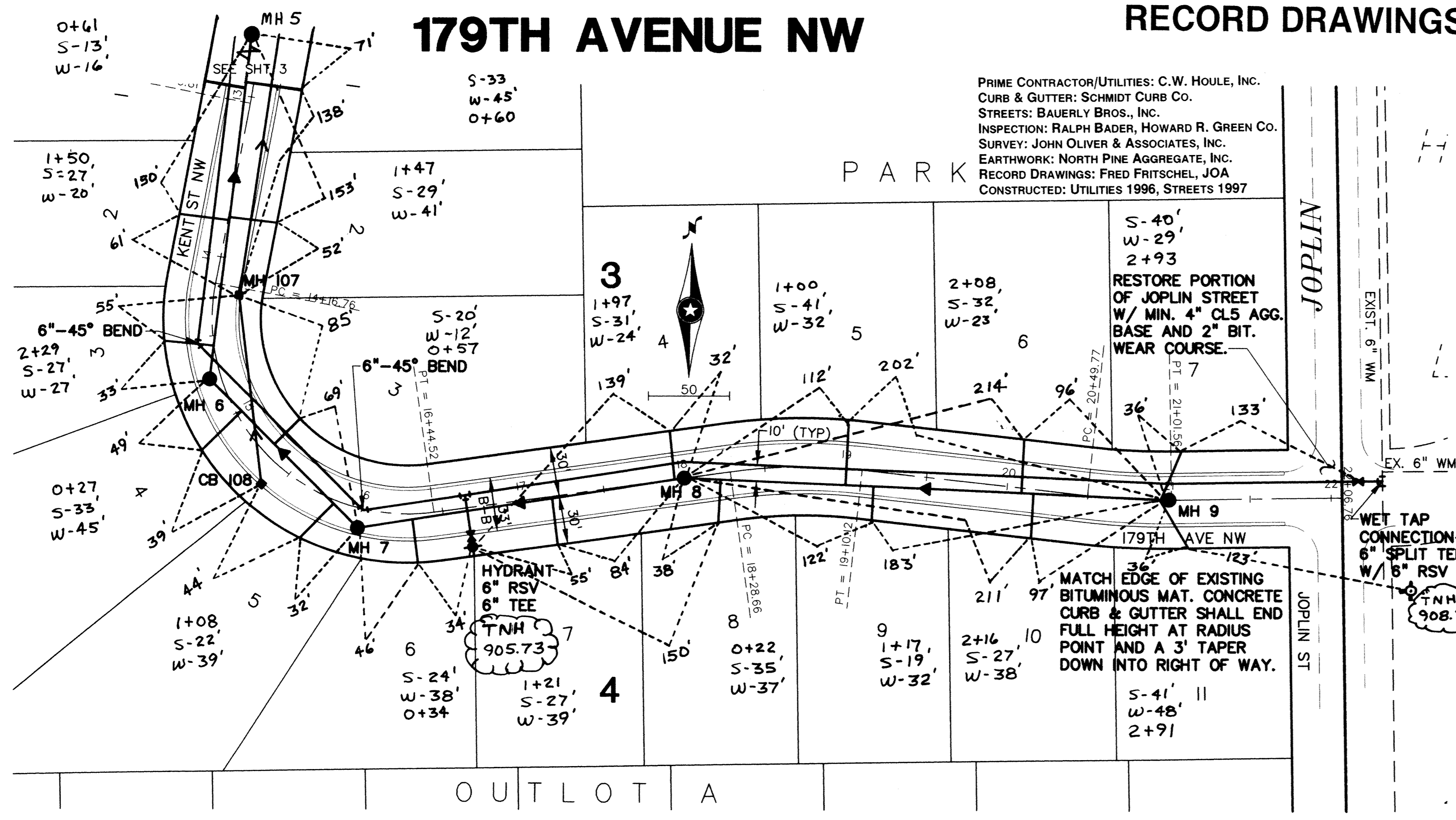


179TH AVENUE NW

RECORD DRAWINGS

180TH CIRCLE NW

PRIME CONTRACTOR/UTILITIES: C.W. HOULE, INC.
CURB & GUTTER: SCHMIDT CURB CO.
STREETS: BAUERLY BROS., INC.
INSPECTION: RALPH BADER, HOWARD R. GREEN CO.
SURVEY: JOHN OLIVER & ASSOCIATES, INC.
EARTHWORK: NORTH PINE AGGREGATE, INC.
RECORD DRAWINGS: FRED FRITSCHEL, JOA
CONSTRUCTED: UTILITIES 1996, STREETS 1997



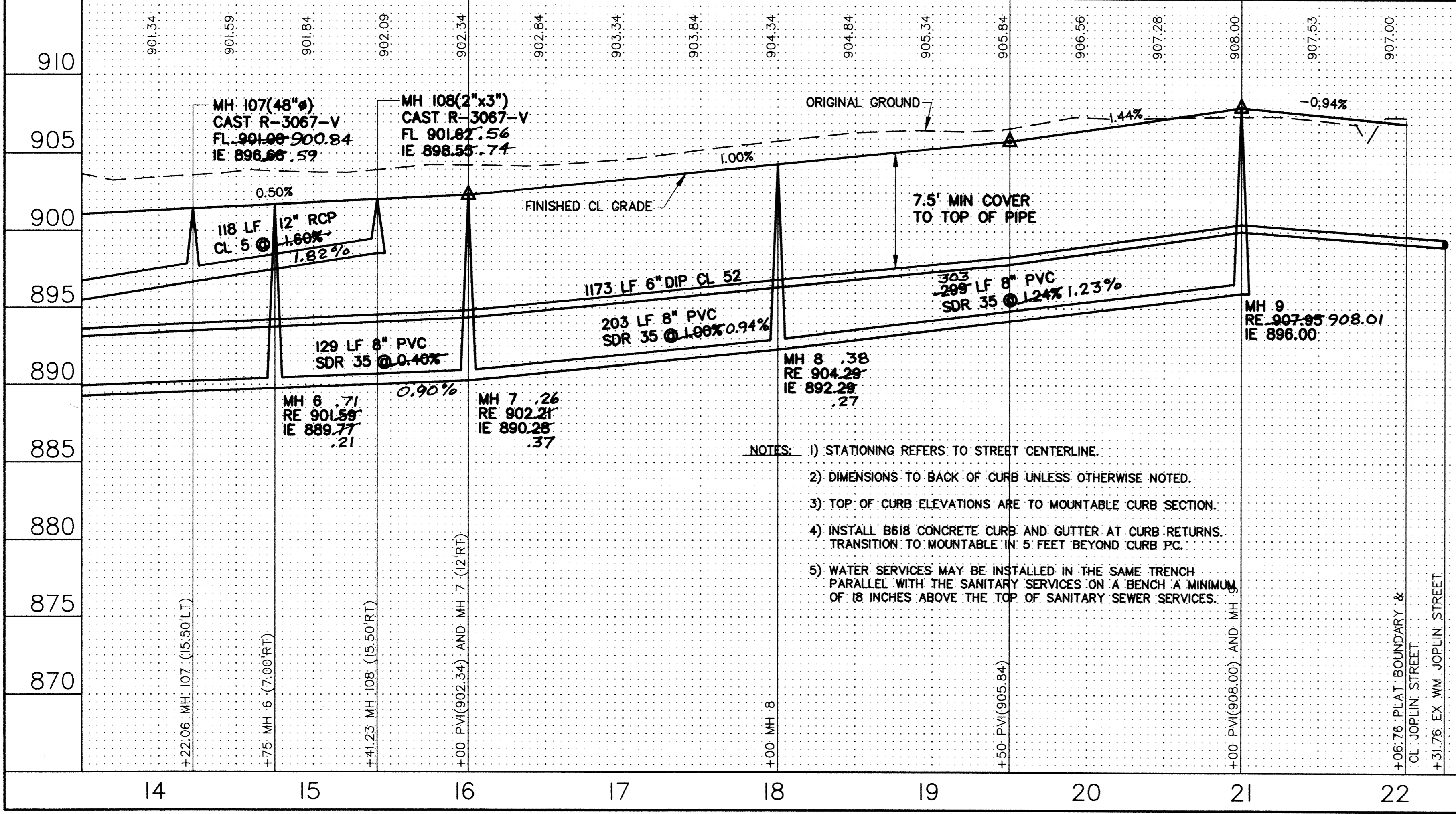
NOTE: CENTERLINE STREET ELEVATIONS WERE NOT SHOT AFTER CONSTRUCTION.

/// DENOTES INSULATION

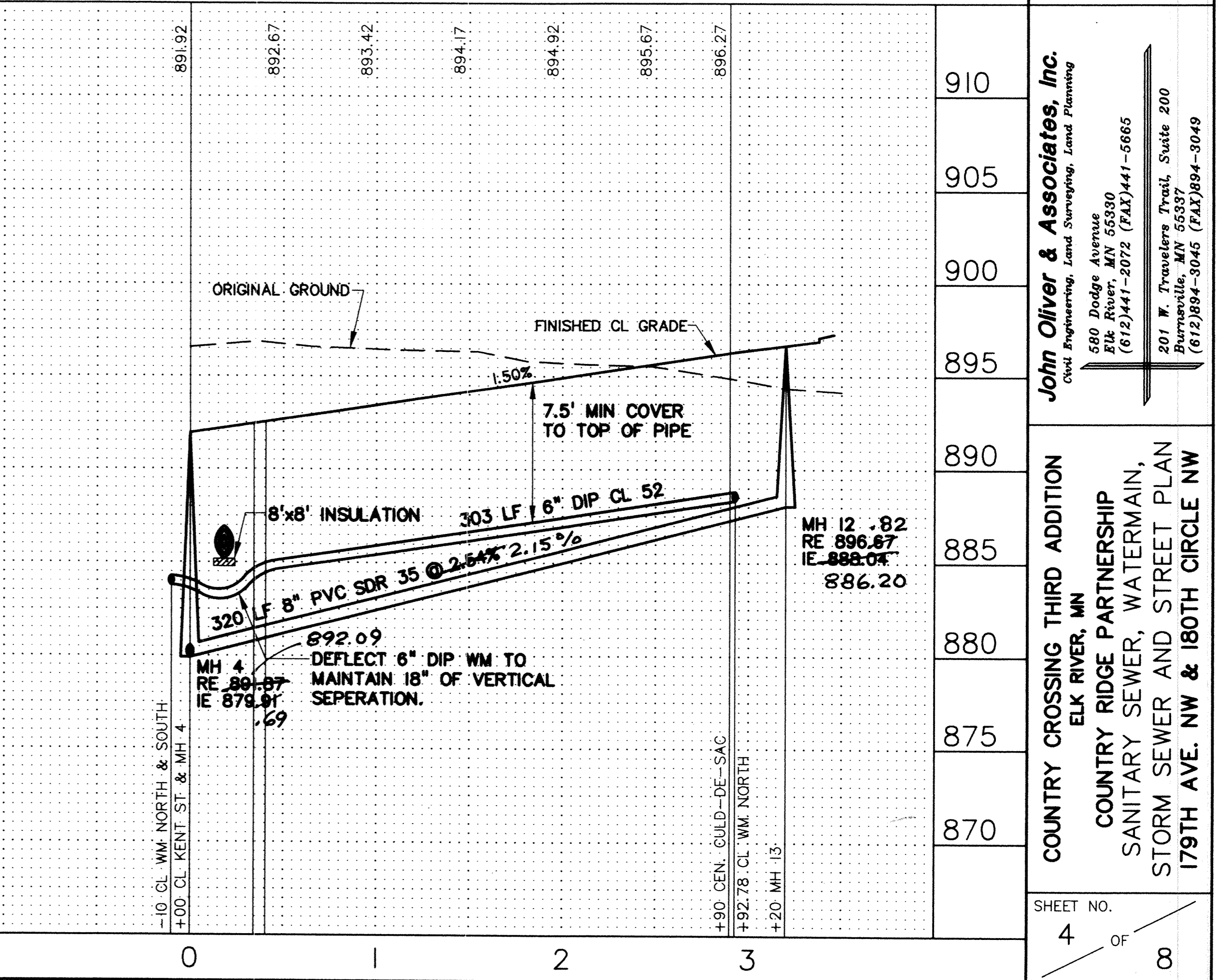
Revision table with columns: REV. NO., DATE, DESCRIPTION. Includes details for DATE (9/14/96), DRAWN BY (BG), CHECKED BY (TM), and FILE NO. (6719.40-03).

I hereby certify that this plan was prepared by me or under my direct supervision and that I am a duly Registered Professional Engineer under the laws of the State of Minnesota.

Signed: [Signature] Date: 10/3/96 Reg. No. 20363



- NOTES: 1) STATIONING REFERS TO STREET CENTERLINE. 2) DIMENSIONS TO BACK OF CURB UNLESS OTHERWISE NOTED. 3) TOP OF CURB ELEVATIONS ARE TO MOUNTABLE CURB SECTION. 4) INSTALL B618 CONCRETE CURB AND GUTTER AT CURB RETURNS. TRANSITION TO MOUNTABLE IN 5 FEET BEYOND CURB PC. 5) WATER SERVICES MAY BE INSTALLED IN THE SAME TRENCH PARALLEL WITH THE SANITARY SERVICES ON A BENCH A MINIMUM OF 18 INCHES ABOVE THE TOP OF SANITARY SEWER SERVICES.



John Oliver & Associates, Inc. Civil Engineering, Land Surveying, Land Planning. 680 Dodge Avenue Elk River, MN 55330. Country Crossing Third Addition Elk River, MN. Sanitary Sewer, Watermain, Storm Sewer and Street Plan 179th Ave. NW & 180th Circle NW. SHEET NO. 4 OF 8.