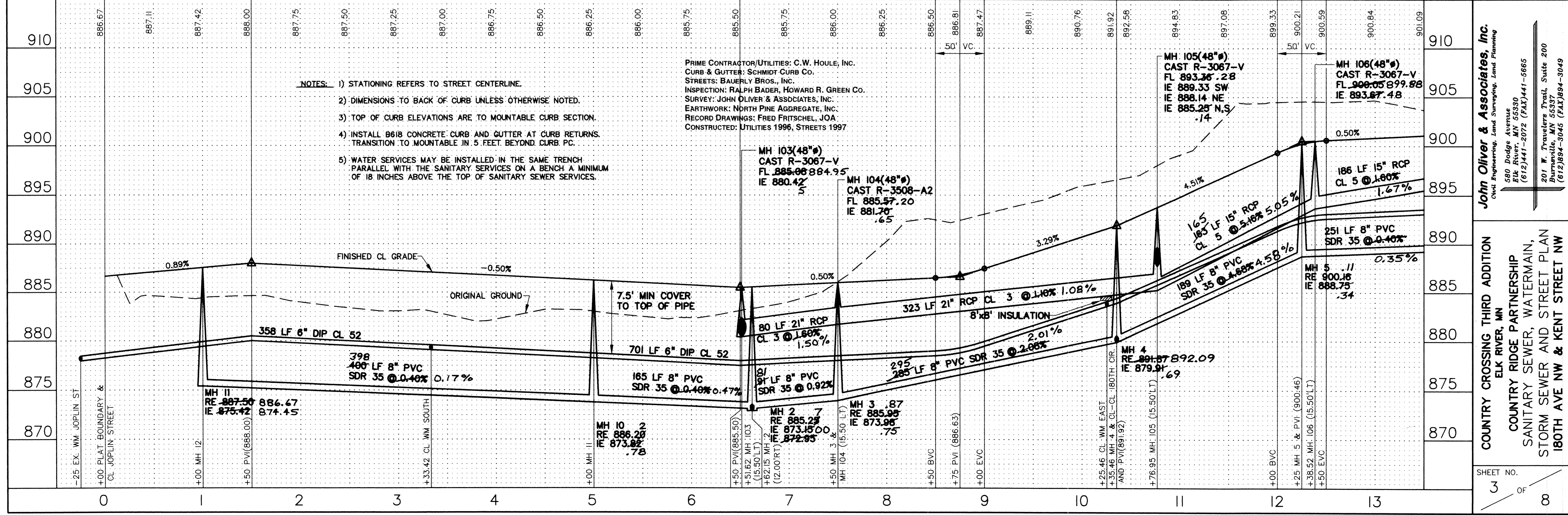
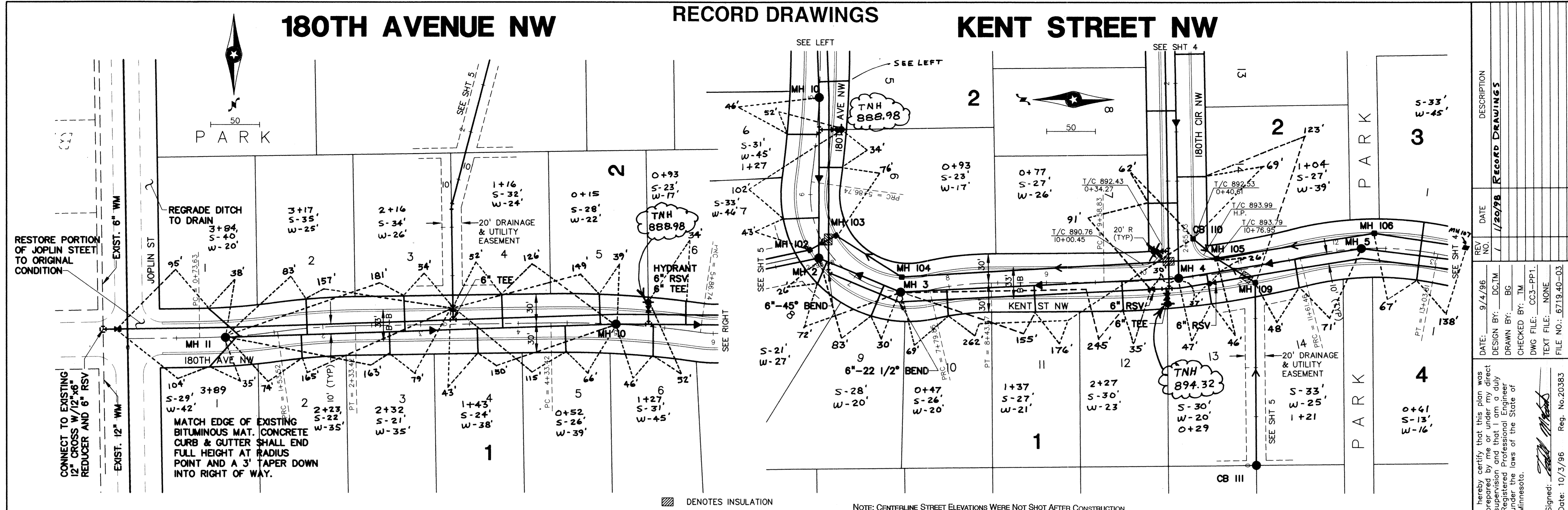


# 180TH AVENUE NW

# RECORD DRAWINGS

# KENT STREET NW



- NOTES:**
- 1) STATIONING REFERS TO STREET CENTERLINE.
  - 2) DIMENSIONS TO BACK OF CURB UNLESS OTHERWISE NOTED.
  - 3) TOP OF CURB ELEVATIONS ARE TO MOUNTABLE CURB SECTION.
  - 4) INSTALL B618 CONCRETE CURB AND GUTTER AT CURB RETURNS. TRANSITION TO MOUNTABLE IN 5 FEET BEYOND CURB PC.
  - 5) WATER SERVICES MAY BE INSTALLED IN THE SAME TRENCH PARALLEL WITH THE SANITARY SERVICES ON A BENCH A MINIMUM OF 18 INCHES ABOVE THE TOP OF SANITARY SEWER SERVICES.

PRIME CONTRACTOR/UTILITIES: C.W. HOULE, INC.  
 CURB & GUTTER: SCHMIDT CURB CO.  
 STREETS: BAUERLY BROS., INC.  
 INSPECTION: RALPH BADER, HOWARD R. GREEN CO.  
 SURVEY: JOHN OLIVER & ASSOCIATES, INC.  
 EARTHWORK: NORTH PINE AGGREGATE, INC.  
 RECORD DRAWINGS: FRED FRITSCHEL, JOA  
 CONSTRUCTED: UTILITIES 1996, STREETS 1997

**John Oliver & Associates, Inc.**  
 Civil Engineering, Land Surveying, Land Planning  
 500 Dodge Avenue  
 Elk River, MN 55330  
 (612)441-2072 (FAX)441-5665

**COUNTRY RIDGE PARTNERSHIP**  
 SANITARY SEWER, WATERMAIN,  
 STORM SEWER AND STREET PLAN  
 180TH AVE NW & KENT STREET NW

SHEET NO. 3 OF 8

REV.	DATE	DESCRIPTION
1	9/4/96	DESIGN BY: DC/TM
2	1/20/98	DRAWN BY: BG
3		CHECKED BY: TM
4		DWG FILE: CC3-PP1
5		TEXT FILE: NONE
6		FILE NO.: 6719.40-03

I hereby certify that this plan was prepared by me or under my direct supervision and that I am a duly Registered Professional Engineer under the laws of the State of Minnesota.

Signed: *[Signature]* Reg. No. 20383  
 Date: 10/3/96