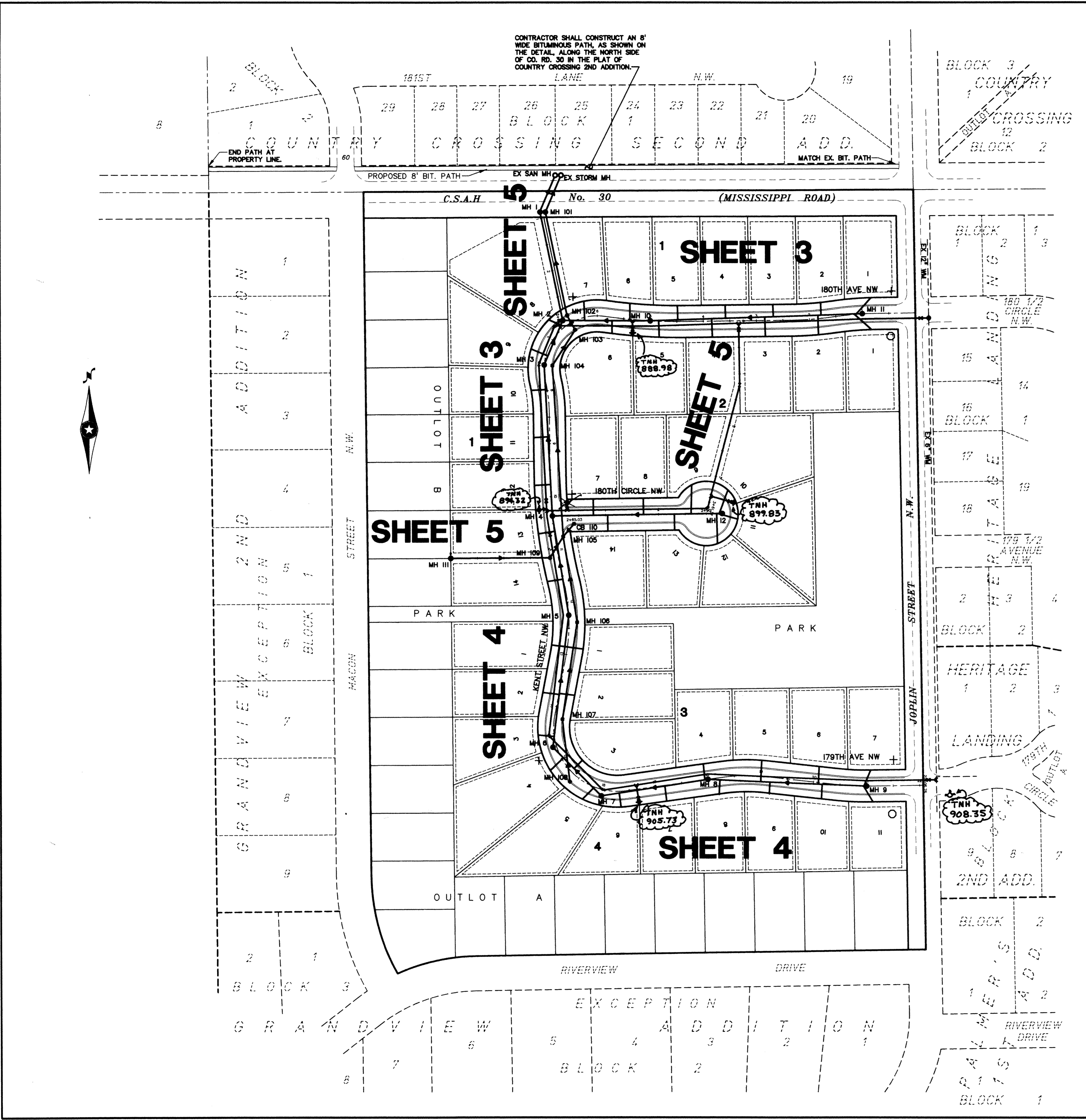
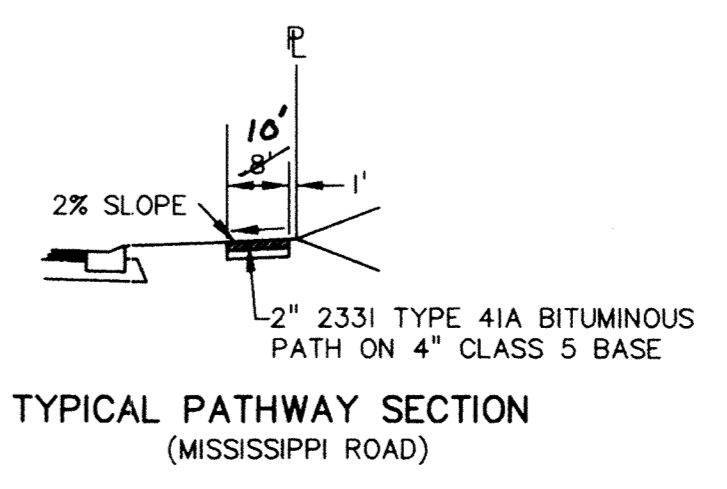
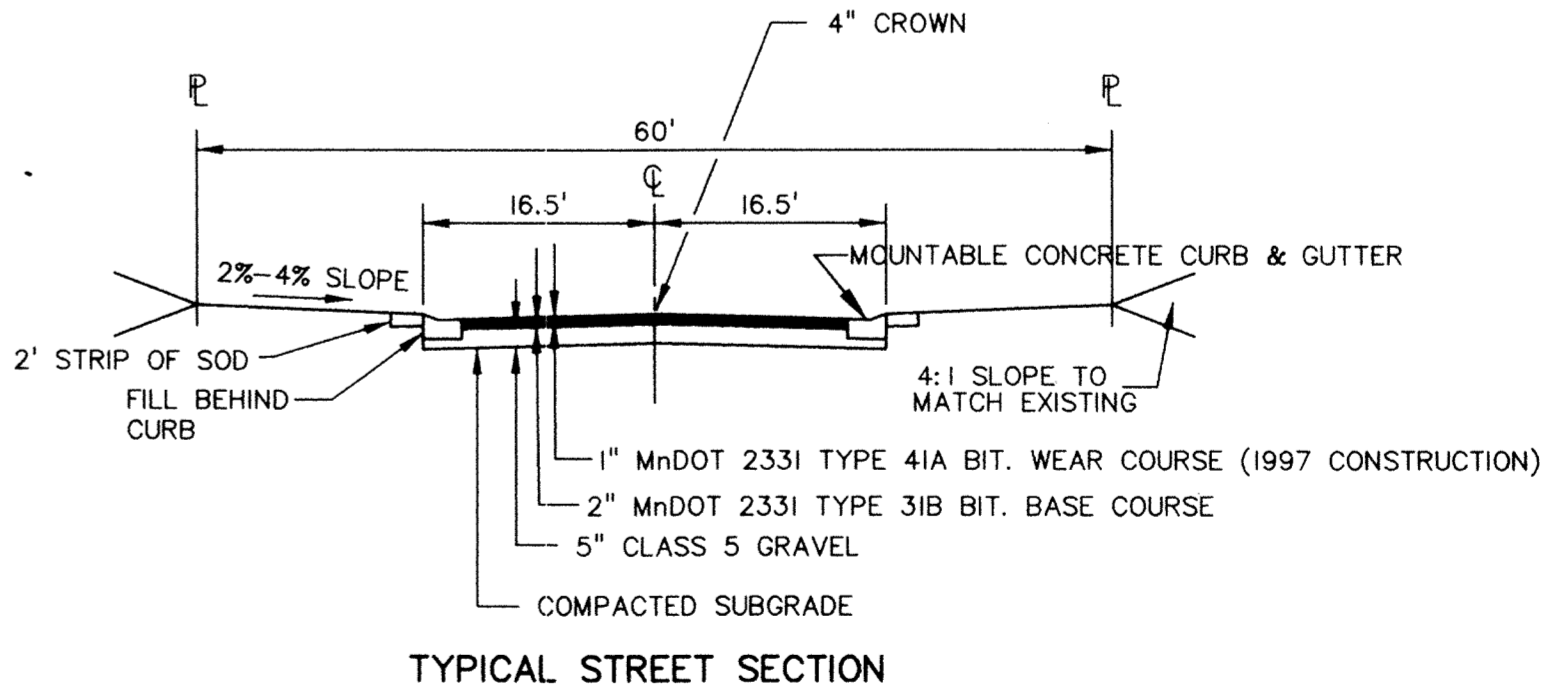


RECORD DRAWINGS SHEET INDEX

TITLE SHEET	1
INDEX SHEET & SIGN PLAN	2
180TH AVE NW & KENT ST NW SANITARY SEWER, WATERMAIN, STORM SEWER, AND STREET CONSTRUCTION	3
179TH AVE NW & 180TH CIR NW SANITARY SEWER, WATERMAIN, STORM SEWER, AND STREET CONSTRUCTION	4
UTILITY EASEMENTS—SANITARY SEWER, STORM SEWER AND WATERMAIN	5
DETAILS & TRAFFIC CONTROL PLAN	6
DETAILS	7
DETAILS	8

PRIME CONTRACTOR/UTILITIES: C.W. HOULE, INC.
CURB & GUTTER: SCHMIDT CURB CO.
STREETS: BAUERLY BROS., INC.
INSPECTION: RALPH BADER, HOWARD R. GREEN CO.
SURVEY: JOHN OLIVER & ASSOCIATES, INC.
EARTHWORK: NORTH PINE AGGREGATE, INC.
RECORD DRAWINGS: FRED FRITSCHER, JOA
CONSTRUCTED: UTILITIES 1996, STREETS 1997

STREET SIGN LEGEND
+ STREET SIGN WITH 2 BLADES -5 ea.
O RI-1 STOP (CITY STANDARD) -2 ea.



DATE: 9/4/96 DESIGN BY: TM DRAWN BY: DC CHECKED BY: TM DWG FILE: CCINDEX TEXT FILE: FILE NO.: 6719.40	RECORD DRAWINGS	DESCRIPTION	DATE	REV. NO.	1	
				REV. NO.	1	
I hereby certify that this plan was prepared by me or under my direct supervision and that I am a duly registered Professional Engineer under the laws of the State of Minnesota.		 Signed: Fred Fritschel Date: 10/3/96 Reg. No. 20363	John Oliver & Associates, Inc. Civil Engineering, Land Surveying, Lease Planning 580 Dodge Avenue 214 River, MN 55330 (612) 244-8072 (FAX) 441-5666 801 W. Traverler Trail, Suite 200 Burnsville, MN 55337 (612) 894-3045 (FAX) 894-3049			
COUNTRY CROSSING THIRD ADDITION SHEET INDEX AND STREET SIGN PLAN			SHEET NO.	2	OF	8

DRAWING NUMBER: COUNTY 3.96

DRAWING NUMBER: 2

DRAWING NUMBER: 1253