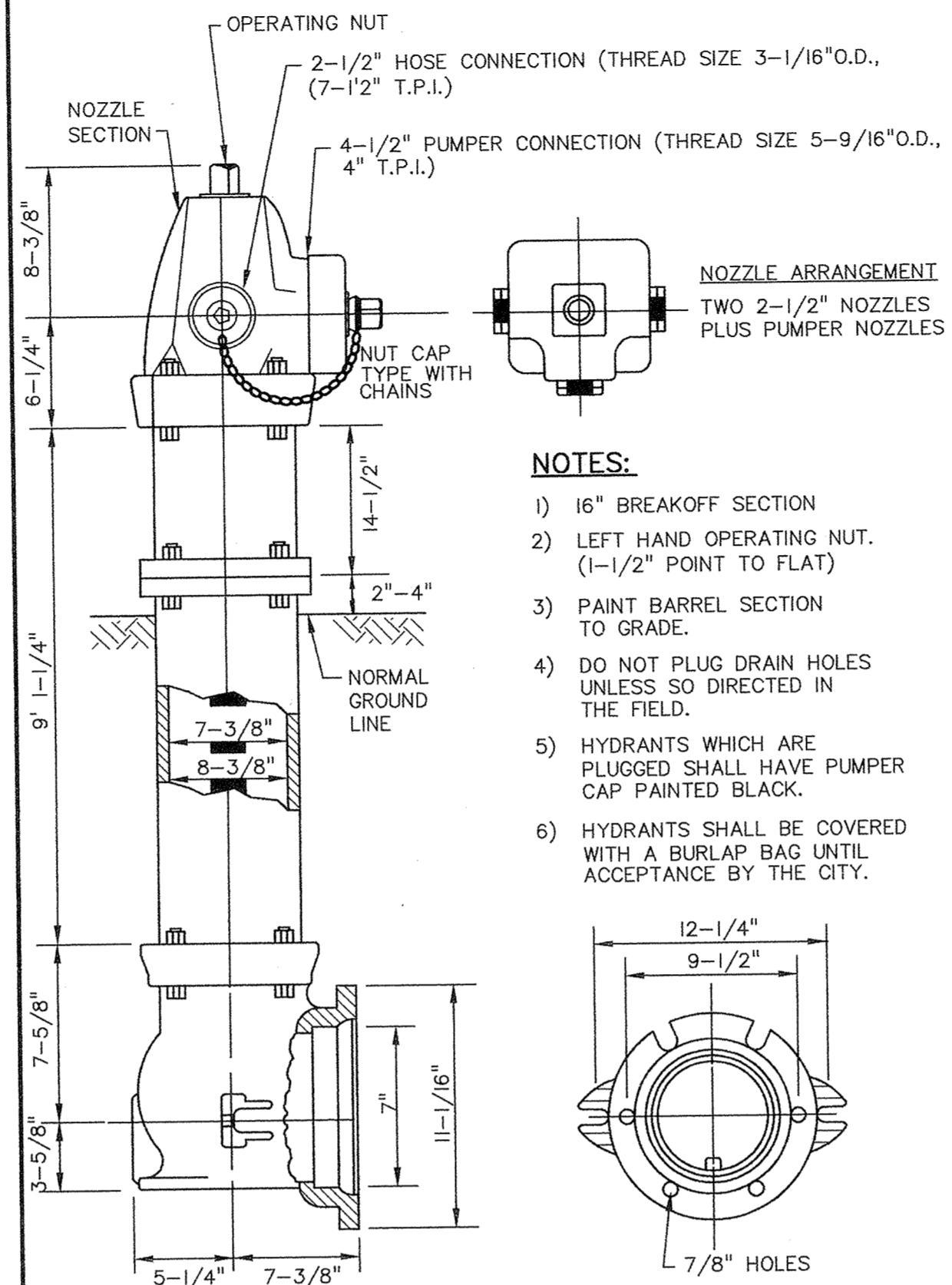
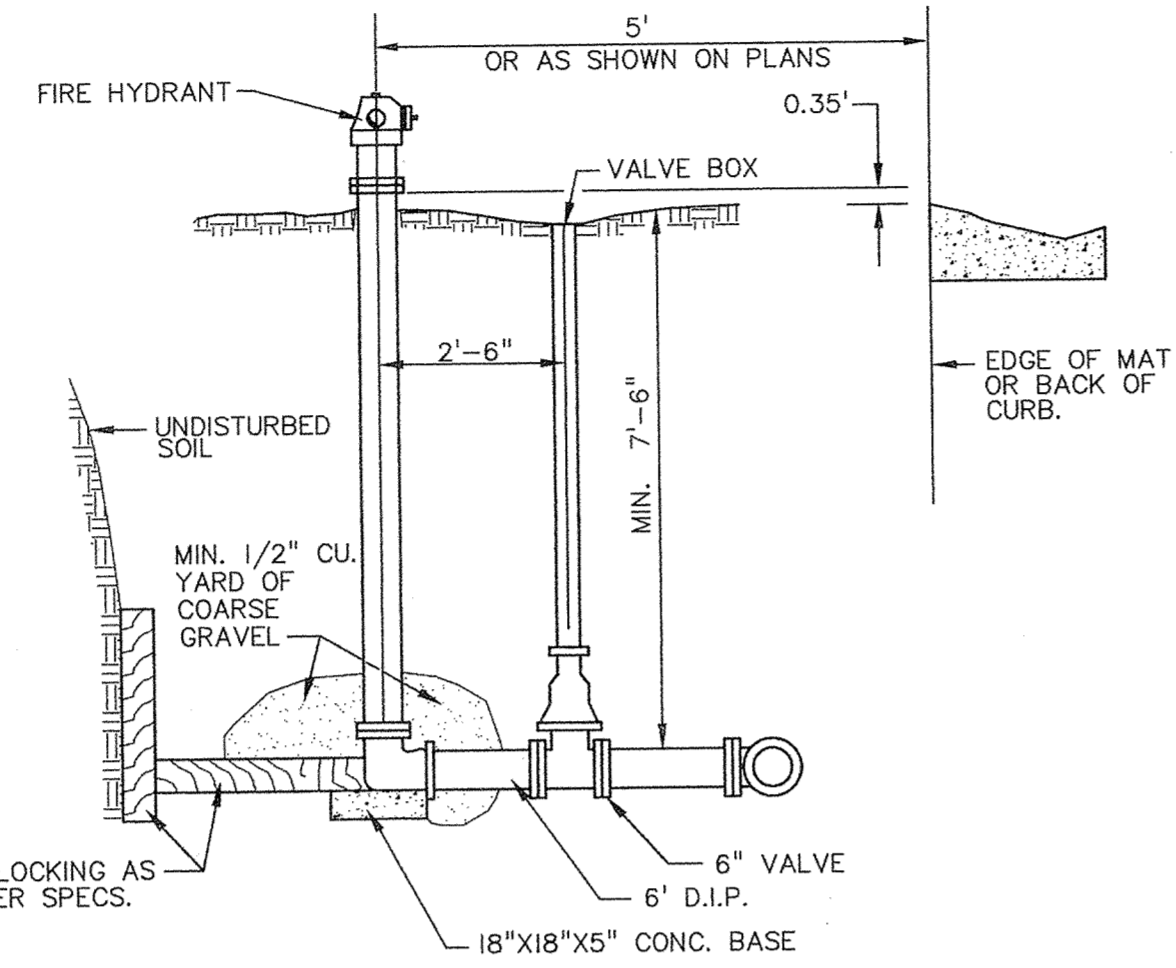
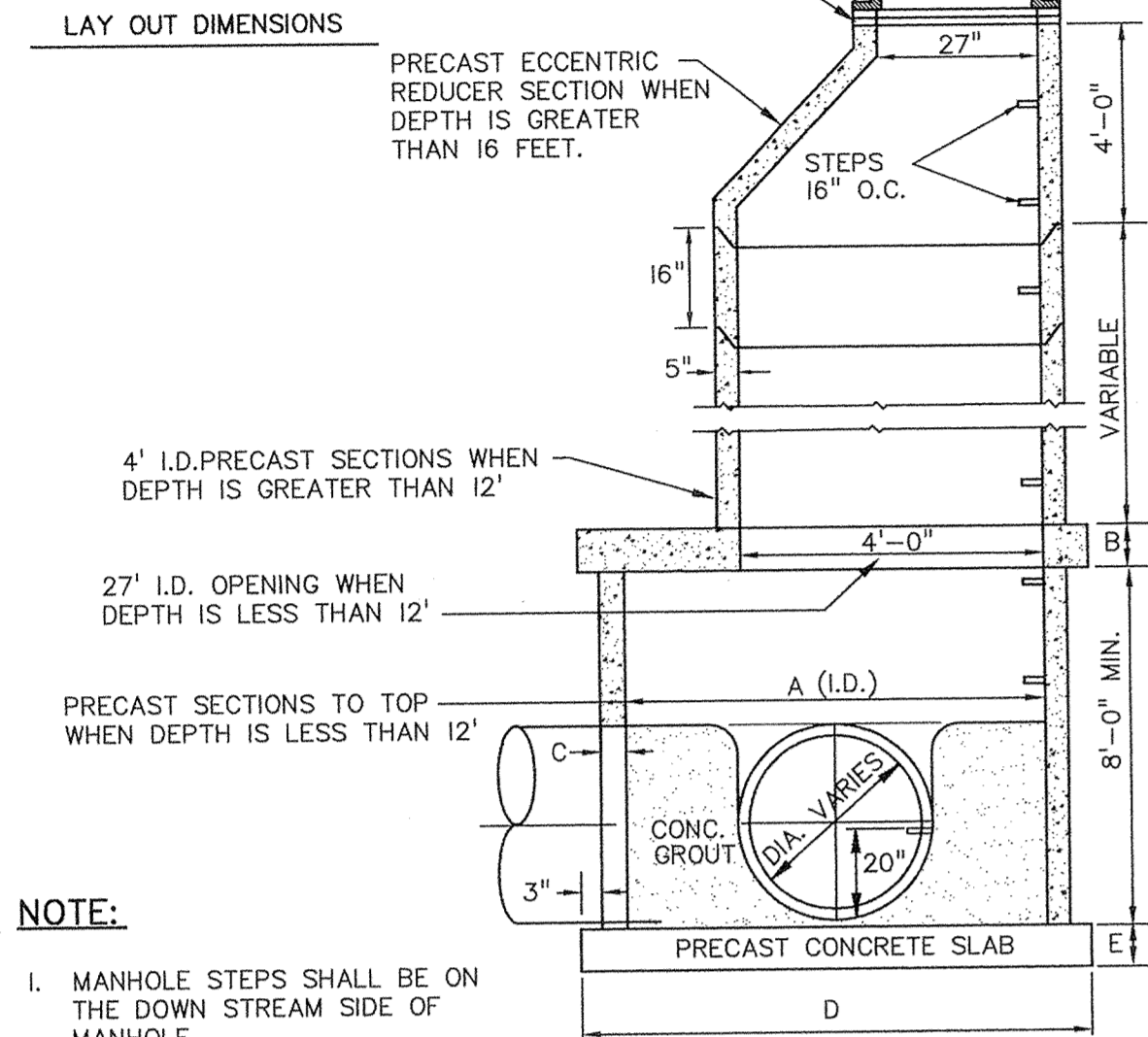


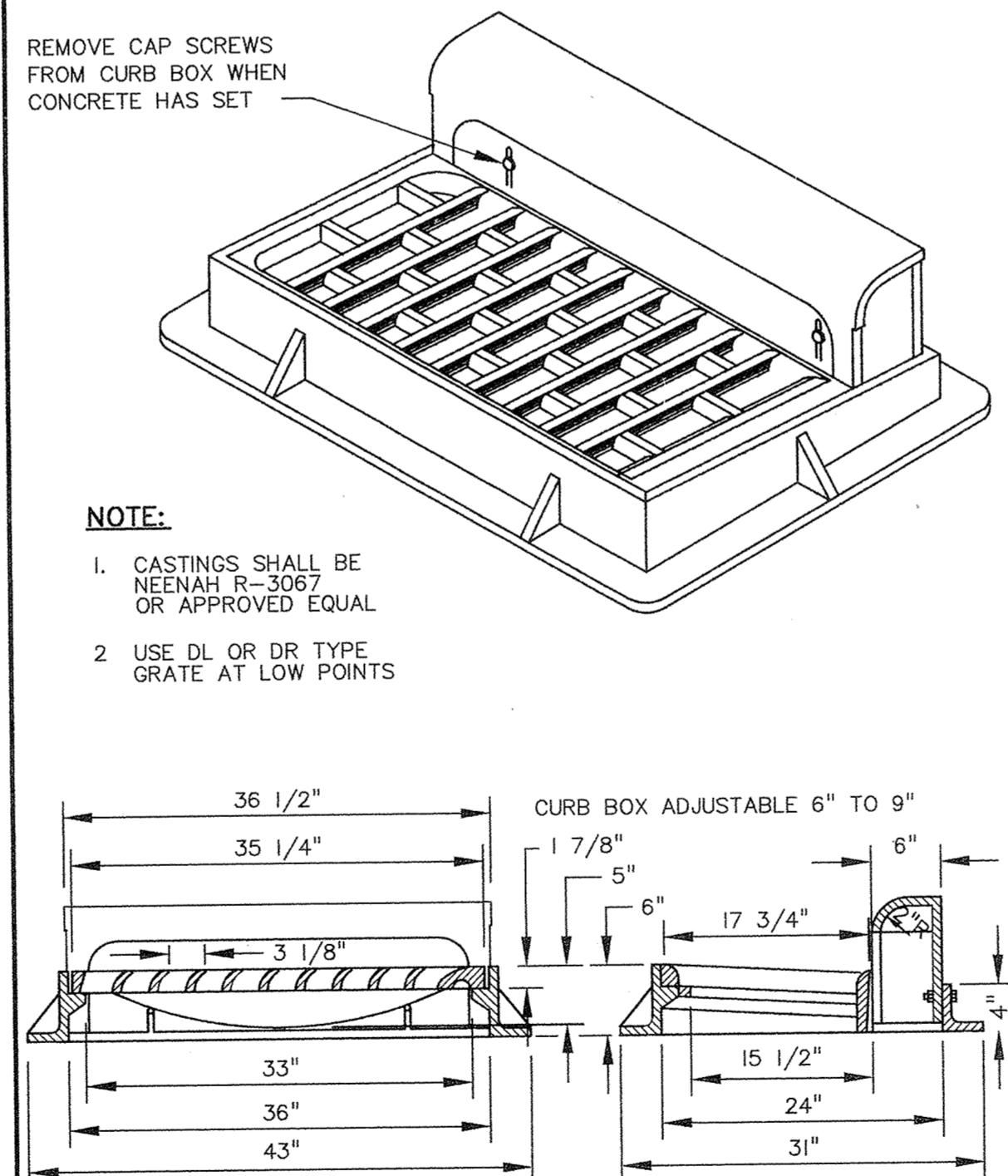
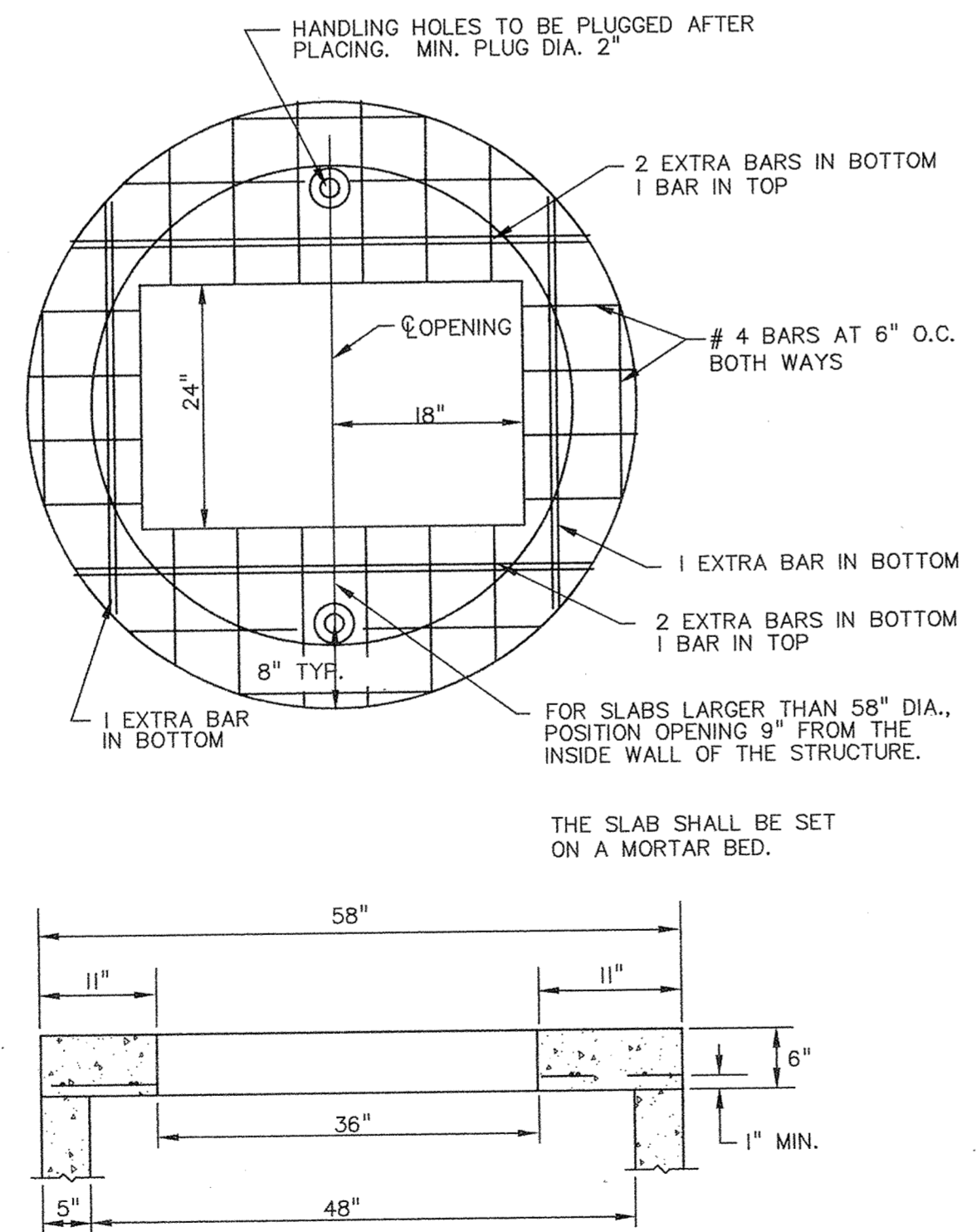
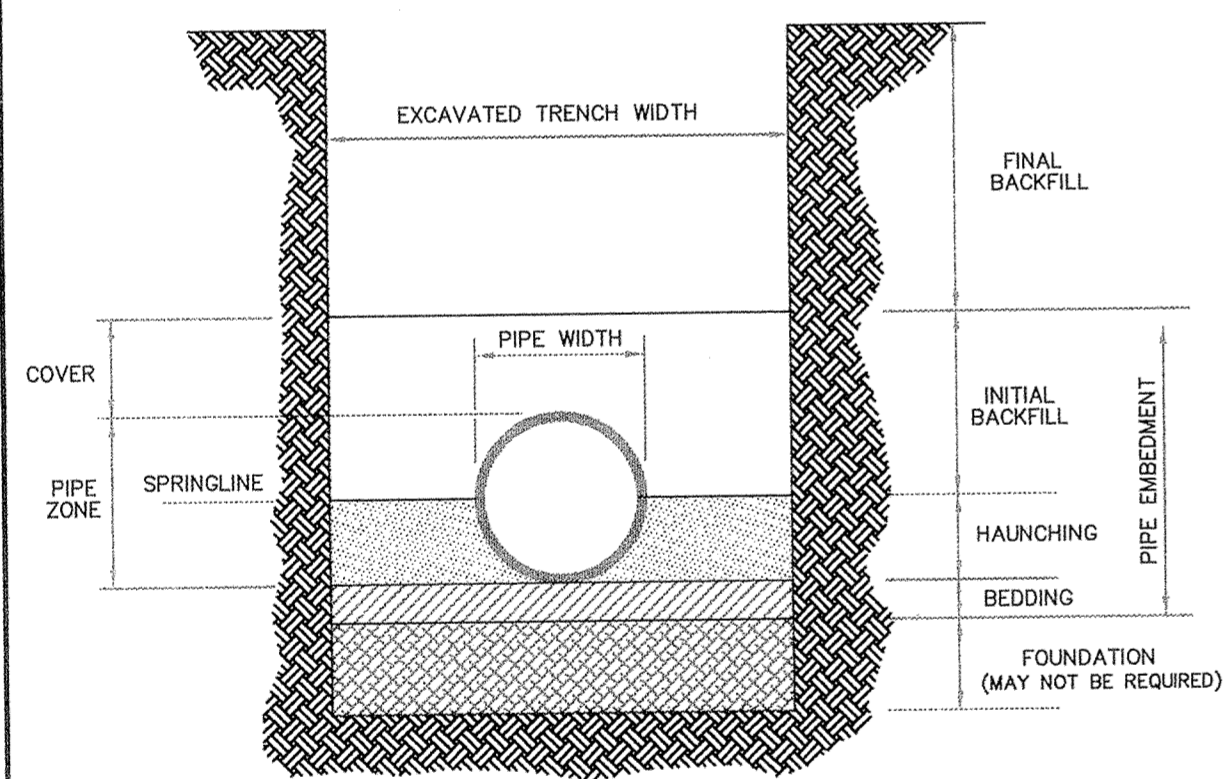
A	B	C	D	E
5'	8"	6"	78"	8"
6'	8"	7"	92"	8"
7'	8"	8"	106"	8"
8'	8"	9"	120"	8"



LARGE DIAMETER MANHOLE - STORM SEWER (D-02)

TYPICAL HYDRANT AND VALVE BOX (W-02)

PACER TRAFFIC FLANGE HYDRANT (W-01)



PLASTIC PIPE BEDDING (S-SP-06)

H.S. 20 DESIGN MANHOLE SLAB-TOP - RECTANGULAR (D-05)

STANDARD INLET CASTING

PRIME CONTRACTOR/UTILITIES: C.W. HOULE, INC.  
CURB & GUTTER: HALVORSON CURB Co.  
STREETS: BAUERLY BROS., INC.  
FIELD PROJECT MANAGER: FRED FRITSCHEL, JOA  
INSPECTION: RALPH BADER, MSA CONSULTING ENGINEERS  
SURVEY: JOHN OLIVER & ASSOCIATES, INC.  
EARTHWORK: DENNIS FEHN EXCAVATING, INC.  
RECORD DRAWINGS: FRED FRITSCHEL, JOA  
CONSTRUCTED: 1996

COUNTRY CROSSING  
SECOND ADDITION  
DETAILS

SHEET NO.  
9 OF 9

DATE:	9/14/95
DESIGN BY:	TM
DRAWN BY:	BG
CHECKED BY:	TM
DWG FILE:	CC02E13
TEXT FILE:	
FILE NO.:	6719.20-03
REV. NO.	
DESCRIPTION	Record Drawing

I hereby certify that this plan was prepared by me or under my direct supervision and that I am a duly registered Professional Engineer in the State of Minnesota.

Signed: *[Signature]* Reg. No. 20383  
Date: 12/05/95

**John Oliver & Associates, Inc.**  
Civil Engineering, Land Surveying, Land Planning  
580 Dodge Avenue  
Ely River, Minnesota  
(612)441-8072 (FAX)441-5665  
201 W. Trondlers Trail, Suite 200  
Burnsville, MN 55337  
(612)894-3045 (FAX)894-3049