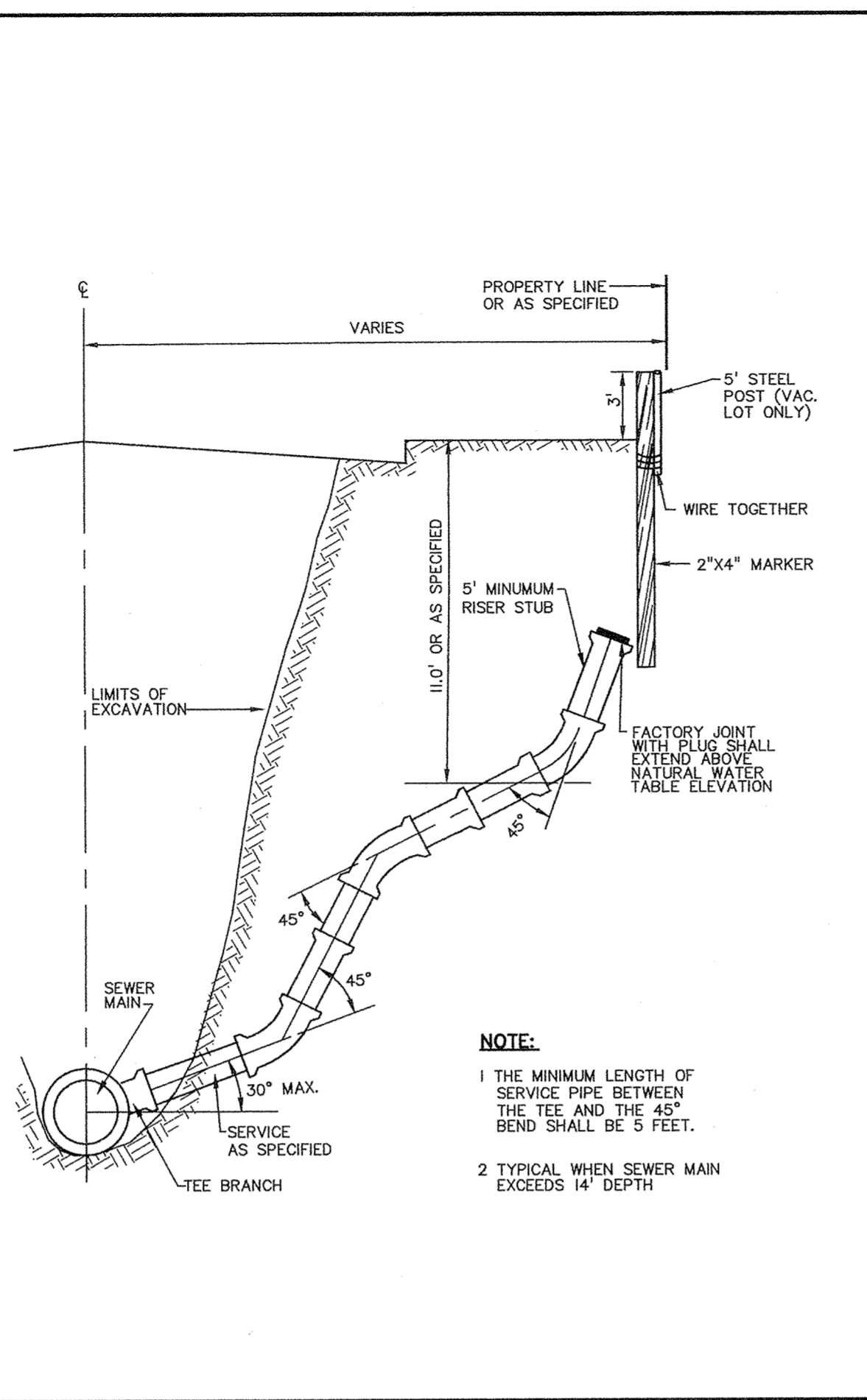
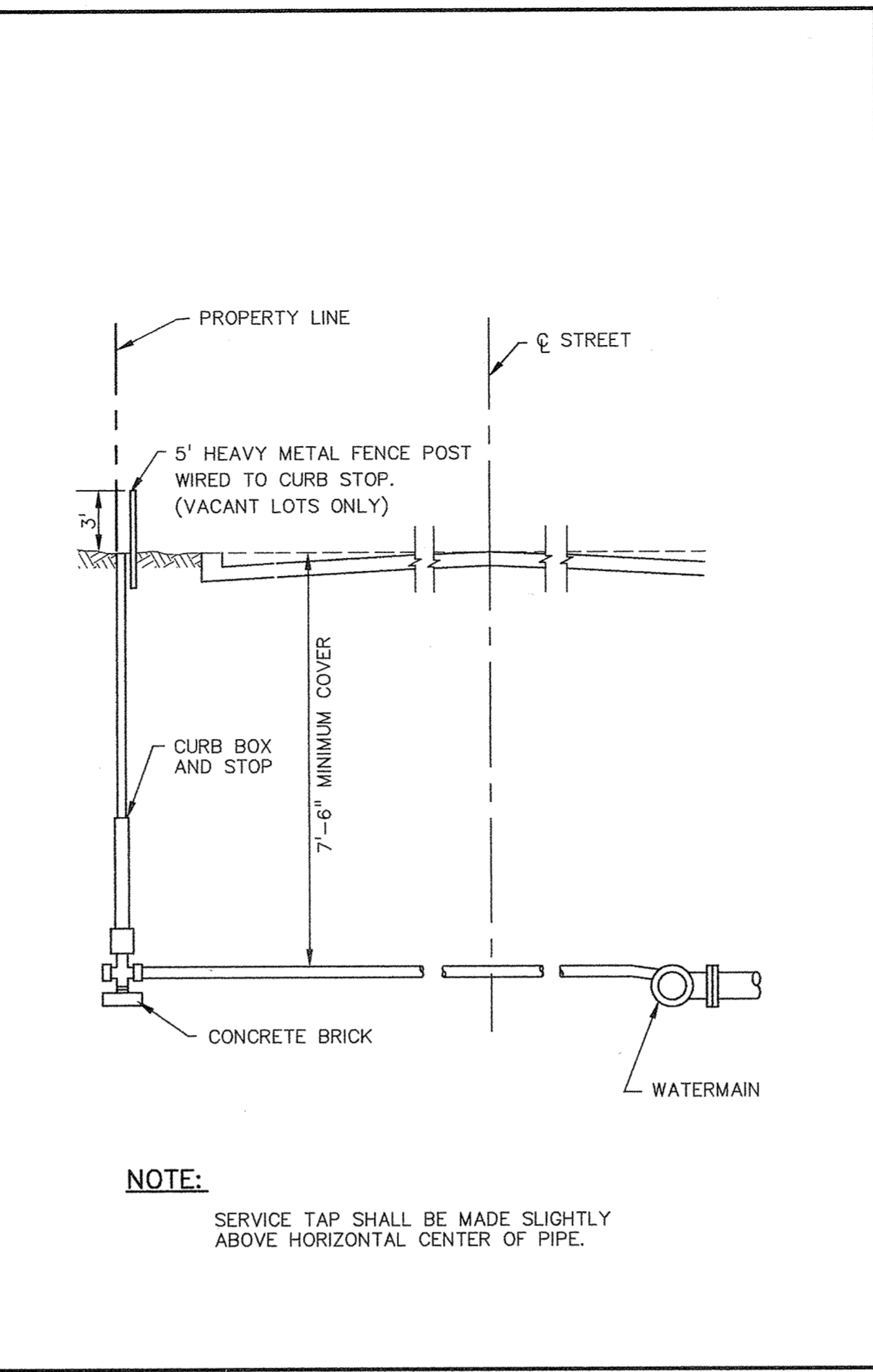


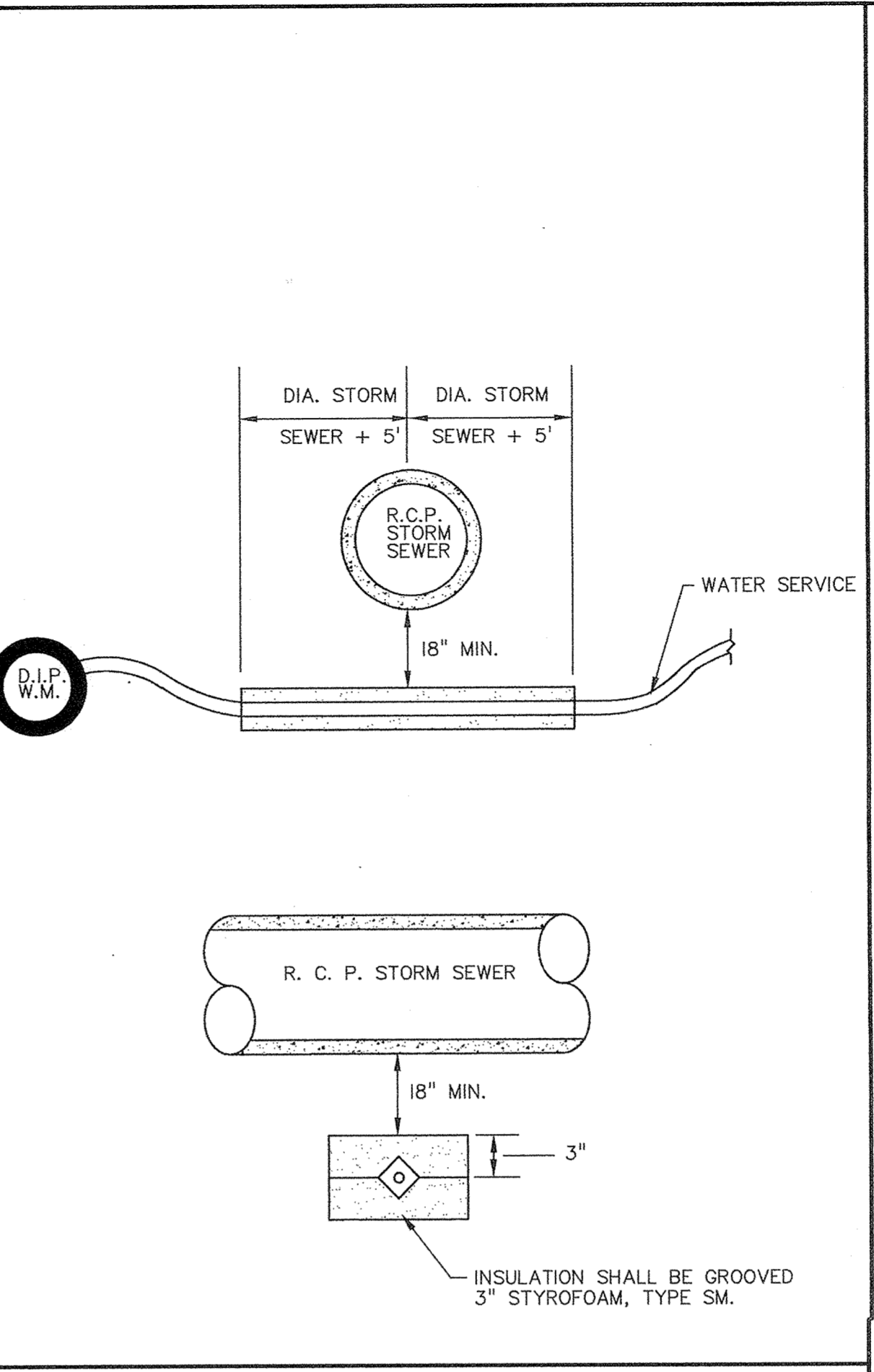
TYPICAL WATER LAYOUT



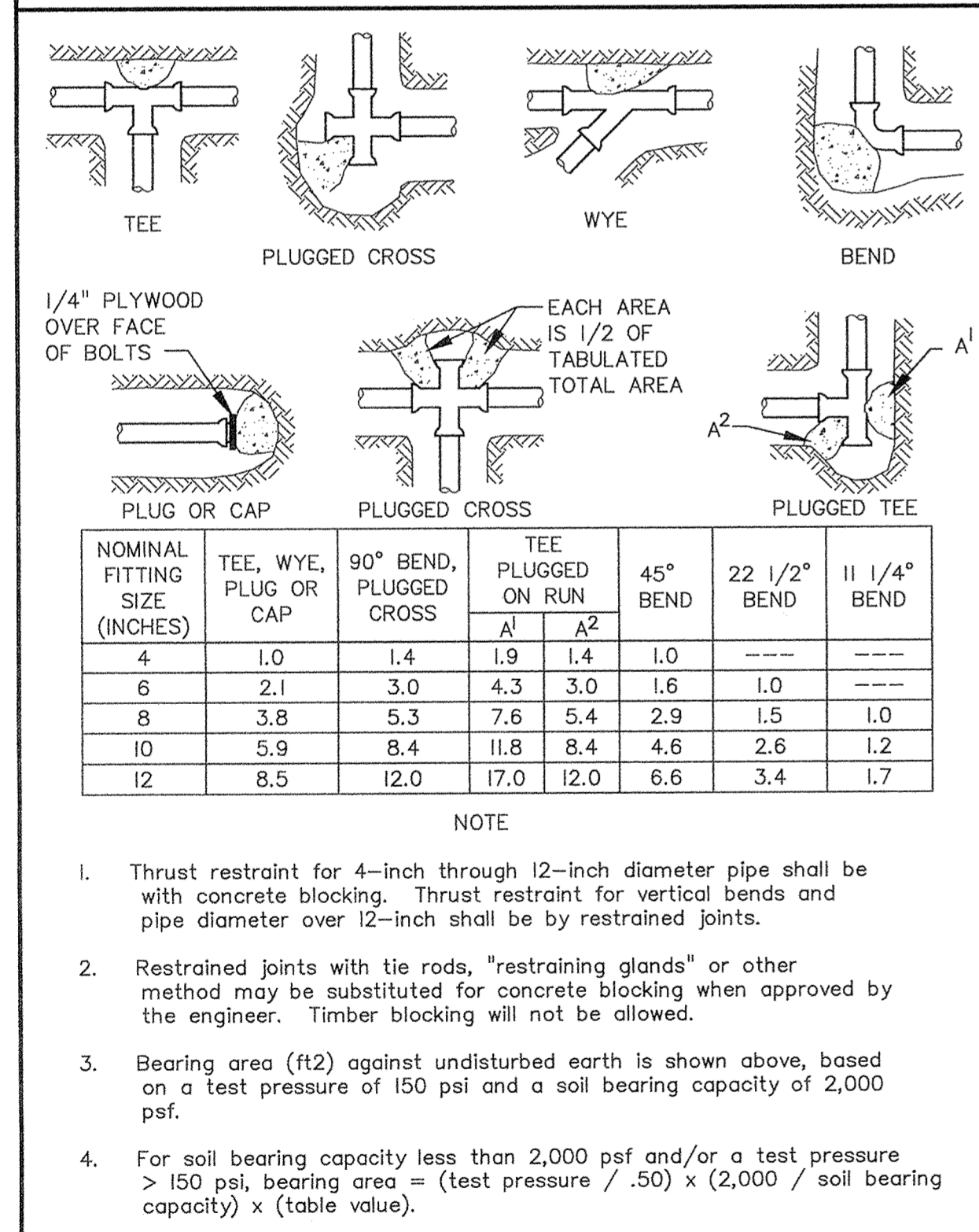
TYPICAL HOUSE SERVICE (DEEP SEWER MAIN) (S-07)



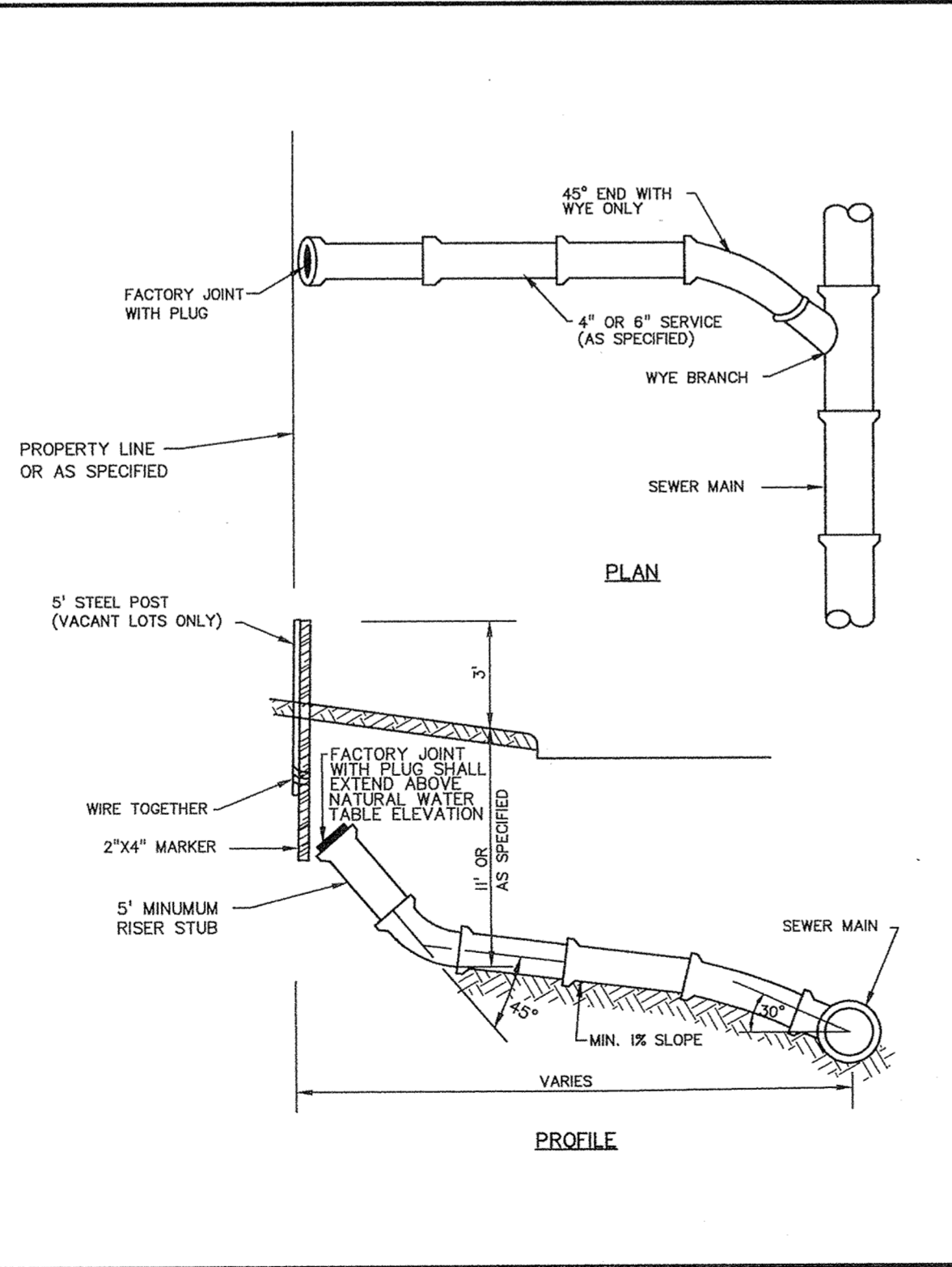
TYPICAL WATER SERVICE CONNECTION (W-03)



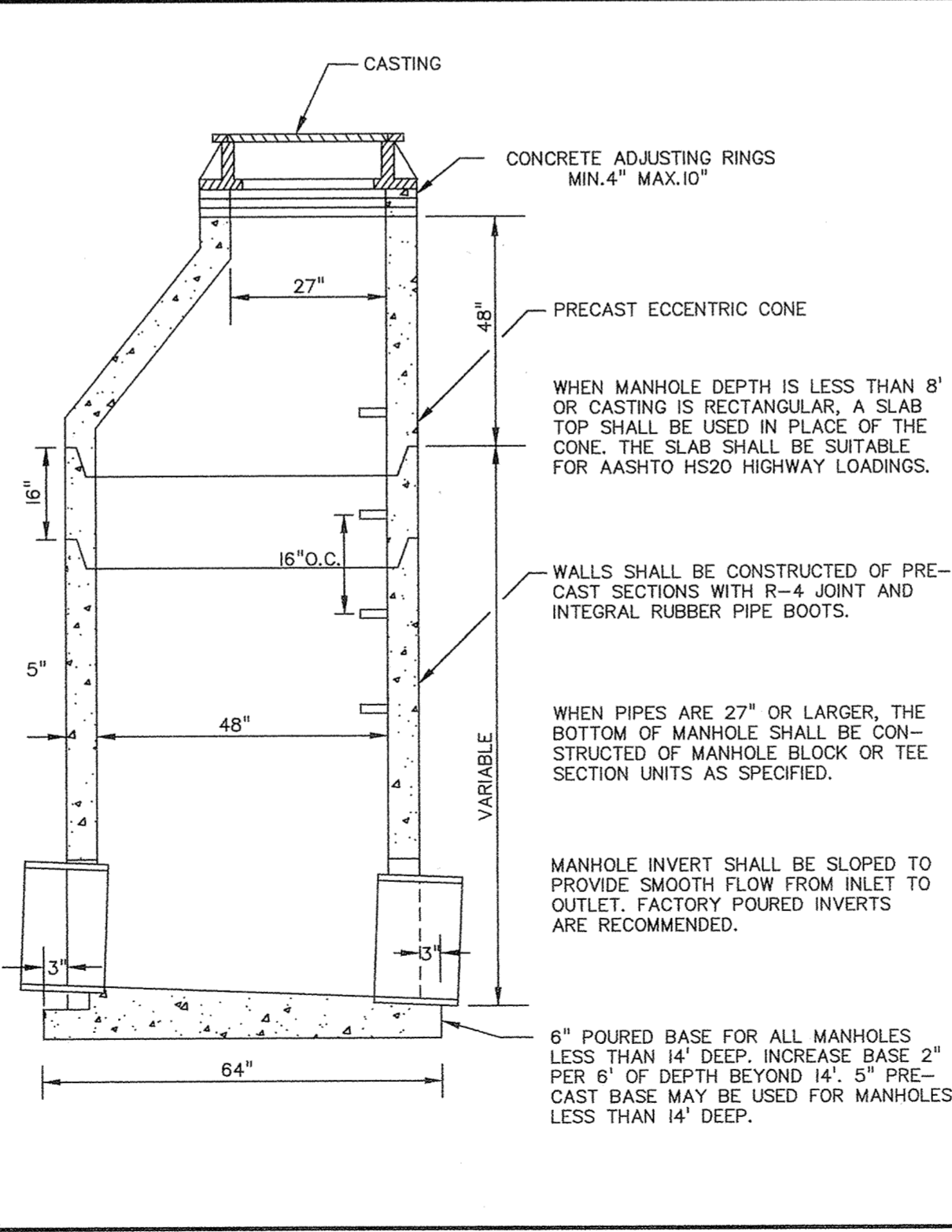
TYPICAL SERVICE INSULATION



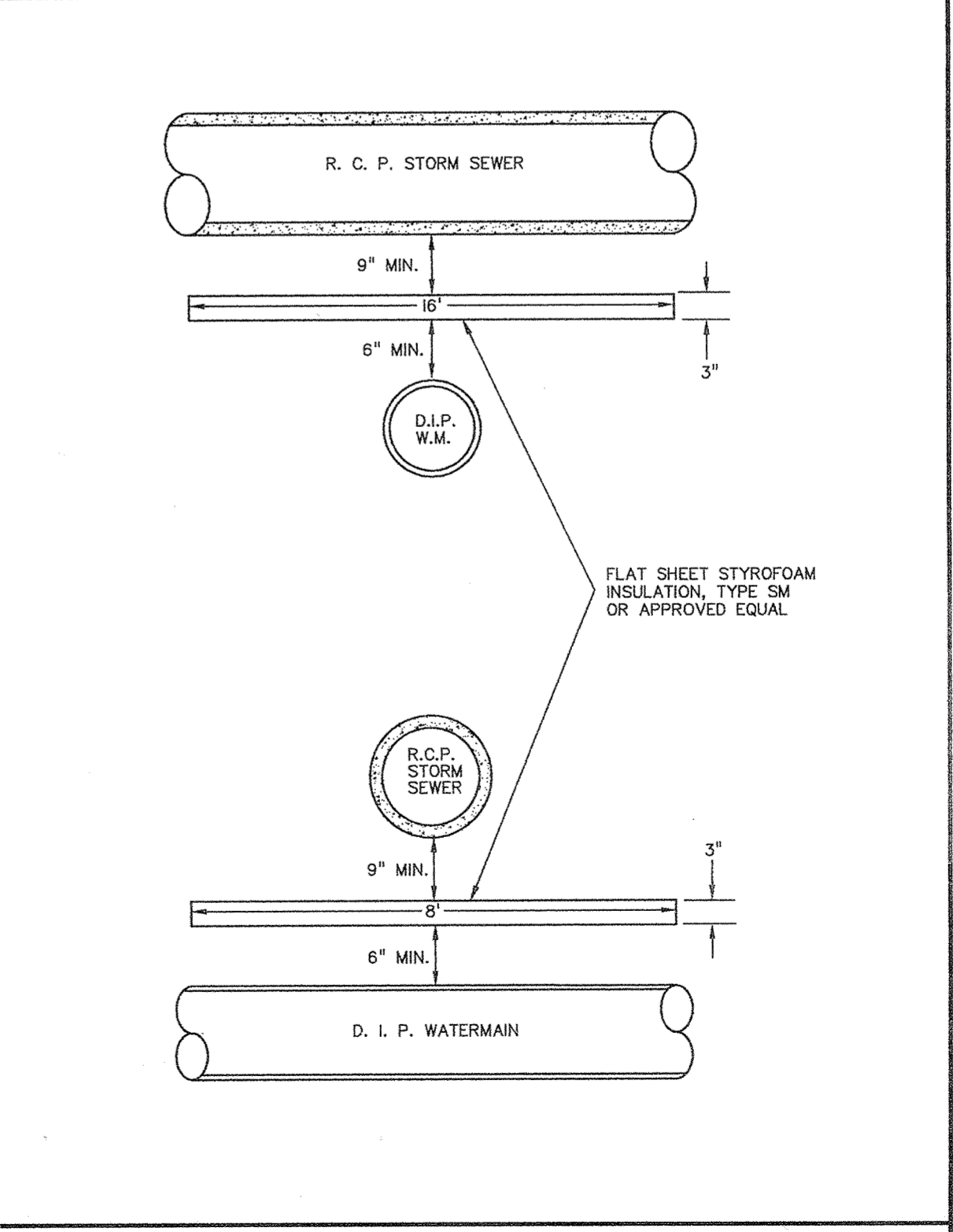
THRUST BLOCKING DETAIL



TYPICAL HOUSE SERVICE (STD. DEPTH SEWER MAIN) (S-05)



STANDARD MANHOLE - SANITARY SEWER (S-01)



TYPICAL WATERMAIN INSULATION (W-08)

PRIME CONTRACTOR/UTILITIES: C.W. HOULE, INC.
 CURB & GUTTER: HALVORSON CURB CO.
 STREETS: BAUERLY BROS., INC.
 FIELD PROJECT MANAGER: FRED FRITSCHEL, JOA
 INSPECTION: RALPH BADER, MSA CONSULTING ENGINEERS
 SURVEY: JOHN OLIVER & ASSOCIATES, INC.
 EARTHWORK: DENNIS FEHN EXCAVATING, INC.
 RECORD DRAWINGS: FRED FRITSCHEL, JOA
 CONSTRUCTED: 1996

DESCRIPTION: RECORD DRAWING

DATE: 1-8-97

REV. NO.:

DATE: 9/14/95
 DESIGN BY: TM
 DRAWN BY: BG
 CHECKED BY: TM
 DWG. FILE: CC2DET2
 TEXT FILE:
 FILE NO.: 6719.20-03

I hereby certify that this plan was prepared by me or under my direct supervision and that I am a duly Registered Professional Engineer under the laws of the State of Minnesota.

Signed: *[Signature]* Reg. No. 20353
 Date: 12/05/95

John Oliver & Associates, Inc.
 Civil Engineering, Land Surveying, Land Planning
 690 Dodge Avenue
 Burnsville, MN 55337
 (612) 441-2072 (FAX) 441-5865
 201 W. Traverlers Treat, Suite 200
 Burnsville, MN 55337
 (612) 894-3046 (FAX) 894-3046

COUNTRY CROSSING
 SECOND ADDITION
 DETAILS

SHEET NO. 8 OF 9