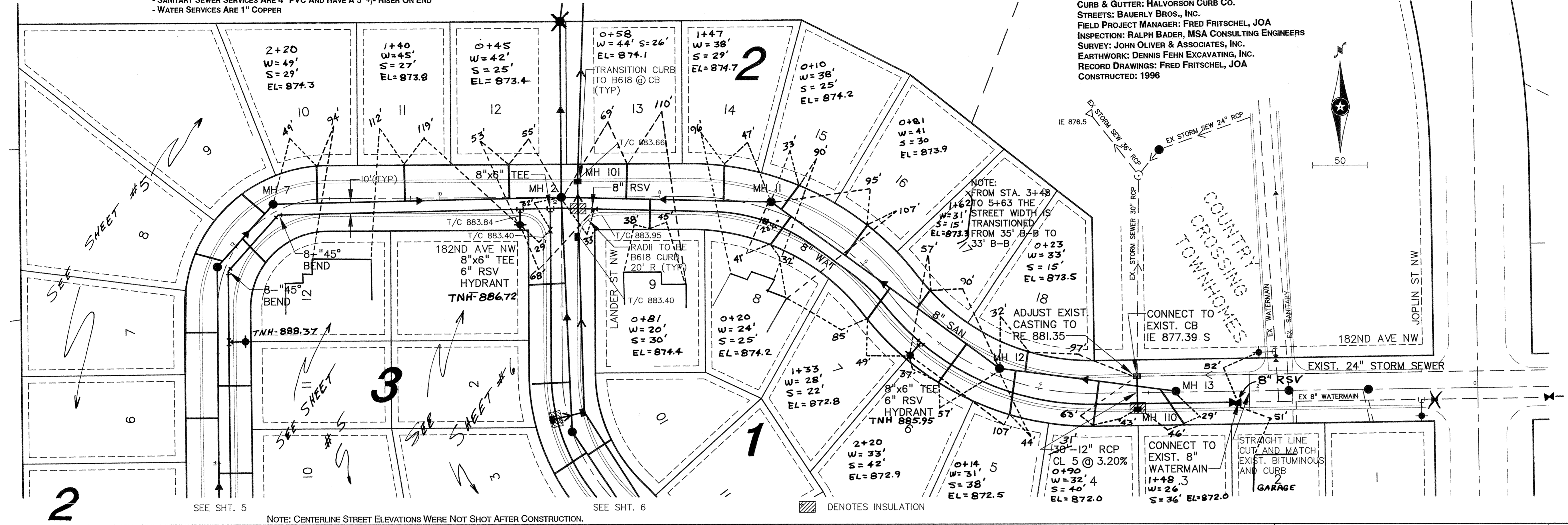


# RECORD DRAWINGS

## 182ND AVE NW

**NOTE:**  
 - SANITARY SEWER SERVICE ELEVATIONS ARE INVERT AT THE 45 DEGREE BEND  
 - SANITARY SEWER SERVICE WYES STATIONED FROM DOWNSTREAM MANHOLE, BEING 0+00  
 - SERVICE TIES ARE TO WATER CURB STOP  
 - SANITARY SEWER SERVICES ARE 4" PVC AND HAVE A 5' +/- RISER ON END  
 - WATER SERVICES ARE 1" COPPER

PRIME CONTRACTOR/UTILITIES: C.W. HOULE, INC.  
 CURB & GUTTER: HALVORSON CURB CO.  
 STREETS: BAUERLY BROS., INC.  
 FIELD PROJECT MANAGER: FRED FRITSCHEL, JOA  
 INSPECTION: RALPH BADER, MSA CONSULTING ENGINEERS  
 SURVEY: JOHN OLIVER & ASSOCIATES, INC.  
 EARTHWORK: DENNIS FEHN EXCAVATING, INC.  
 RECORD DRAWINGS: FRED FRITSCHEL, JOA  
 CONSTRUCTED: 1996



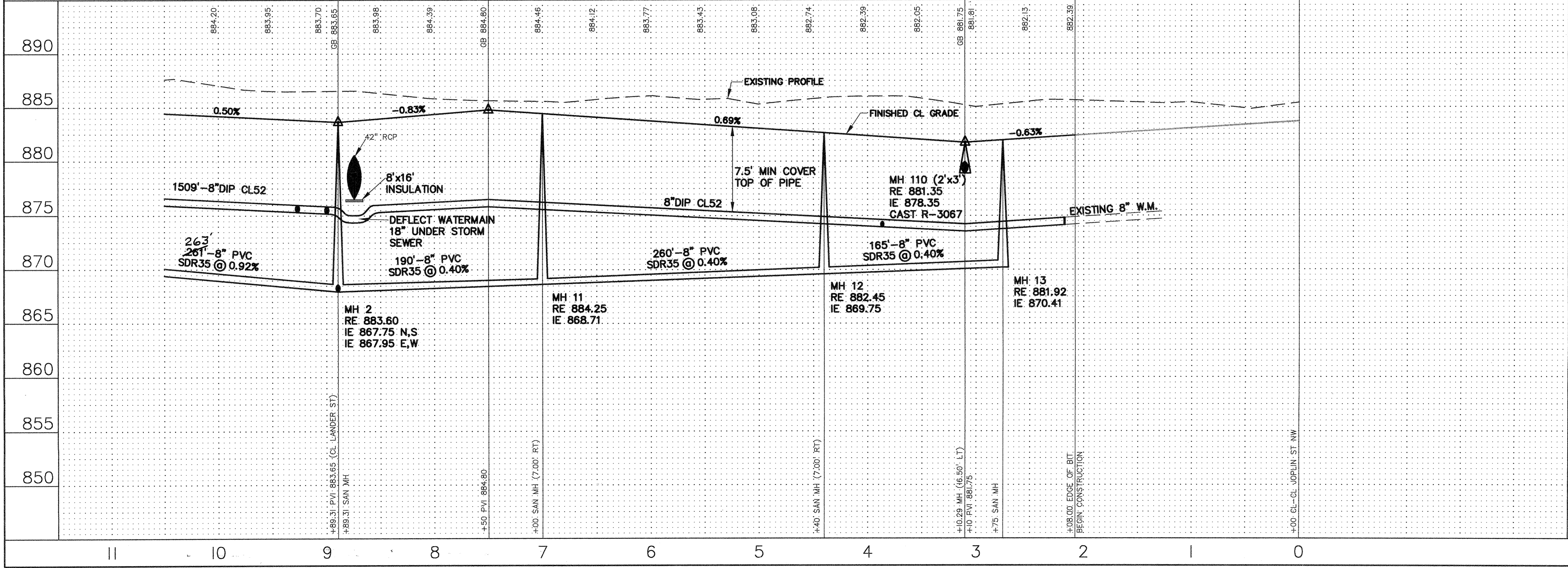
REV NO.	DATE	DESCRIPTION
1	12/19/96	Record Drawing

DATE: 11/02/95  
 DESIGN BY: TWM  
 DRAWN BY: BG  
 CHECKED BY: TWM  
 DWG FILE: CC2-182  
 TEXT FILE: NONE  
 FILE NO.: 7169.20-03

I hereby certify that this plan was prepared by me or under my direct supervision and that I am a duly Registered Professional Engineer under the laws of the State of Minnesota.

Signed: *[Signature]*  
 Date: 12/05/95 Reg. No. 20383

NOTE: CENTERLINE STREET ELEVATIONS WERE NOT SHOT AFTER CONSTRUCTION.



890	890
885	885
880	880
875	875
870	870
865	865
860	860
855	855
850	850

**Join Oliver & Associates, Inc.**  
 Civil Engineering, Land Surveying, Land Planning  
 580 Dodge Avenue  
 Elk River, Minnesota  
 (612)441-2072 (fax)441-6665  
 201 W. Translators Trail, Suite 200  
 Burnsville, MN 55337  
 (612)894-3645 (fax)894-3049

**COUNTRY CROSSING SECOND ADDITION**  
 ELK RIVER, MN  
**COUNTRY RIDGE PARTNERSHIP**  
 SANITARY SEWER, WATERMAIN,  
 STREET AND STORM SEWER PLAN

SHEET NO. 4 OF 9