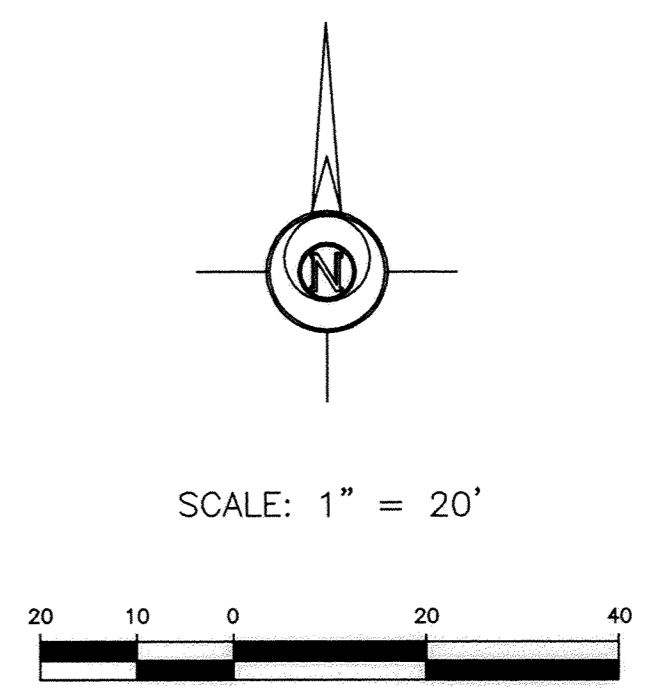


LEGEND:

- CATCHBASIN
- CATCHBASIN/MANHOLE
- KEYED NOTE
- ←← STORM SEWER
- ←← DRAIN TILE
- ←← SANITARY SEWER
- +— WATER SERVICE
- - - PROPOSED CONTOUR
- - - PROPOSED SPOT ELEVATION (TC = TOP OF CURB, GL = GUTTER LINE)
- 901- PROPOSED CONTOUR



RECORD GIS LOCATION PLAN

GENERAL GRADING AND UTILITY NOTES: FROM SITE GRADING & UTILITY PLAN

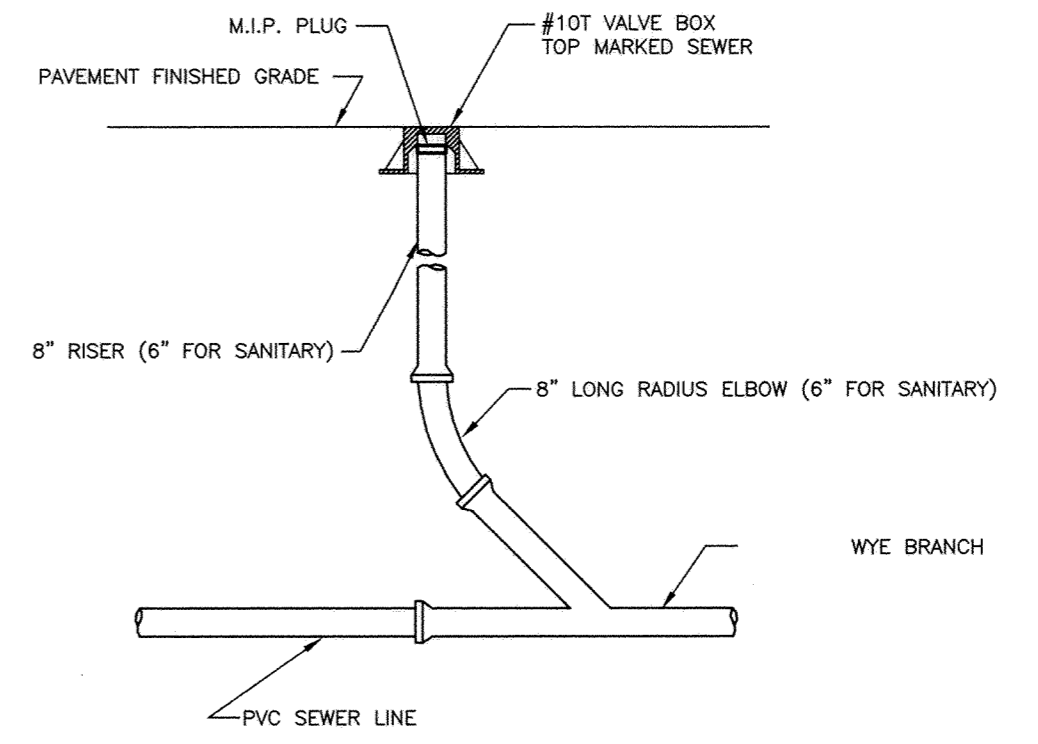
1. BIDDER WILL VISIT THE SITE PRIOR TO BIDDING TO UNDERSTAND THE SCOPE OF WORK. NO ADDITIONAL COMPENSATION WILL BE ALLOWED FOR ITEMS THAT COULD HAVE BEEN IDENTIFIED BY A SITE VISIT. STUDYING THE TOPOGRAPHIC SURVEY, THOROUGHLY REVIEWING ALL PLANS AND GEOTECHNICAL REPORT, AND ADDITIONAL INFORMATION REQUESTED FOR CLARIFICATION PRIOR TO BIDDING.
2. REFER TO TOPOGRAPHIC SURVEY FOR BENCHMARK INFORMATION.
3. REFERENCE MECHANICAL AND ELECTRICAL PLANS FOR COORDINATION OR CONNECTION TO BUILDING SERVICES.
4. SEE GEOTECHNICAL REPORT FOR SUBSURFACE INVESTIGATION INFORMATION AND LOCATIONS OF SOIL BORINGS NOT SHOWN ON THE DRAWINGS.
5. COORDINATE ANY SHUTDOWN OF UTILITY SERVICES WITH THE PROPERTY OWNER, ARCHITECT, AND PRIVATE UTILITY OWNER.
6. REFER TO LANDSCAPE PLAN FOR PERMANENT TURF RESTORATION AND PLANTING INFORMATION.
7. THE CONTRACTOR IS RESPONSIBLE FOR OBTAINING ALL REQUIRED PERMITS PRIOR TO BEGINNING WORK.
8. MAINTAIN TEMPORARY PROTECTION MEASURES DURING CONSTRUCTION ACTIVITIES. PROVIDE ADDITIONAL PROTECTION AS NECESSARY AS WORK PROGRESSES.
9. SEE GEOMETRIC AND PAVING PLAN FOR SITE LAYOUT.
10. PROPOSED CONTOURS AND SPOT ELEVATIONS ARE TO FINISHED GRADE.
11. SPOT ELEVATIONS SHOWN ADJACENT TO CURB REFER TO GUTTER/FLOW LINE. SPOT ELEVATION SHOWN FOR TOP OF CURB ARE LABELED WITH TC (TOP OF CURB).
12. PROVIDE POSITIVE DRAINAGE AWAY FROM BUILDINGS AT ALL TIMES.
13. NO GRADED SLOPES SHALL EXCEED 4:1 (HORIZONTAL TO VERTICAL) UNLESS OTHERWISE NOTED.
14. THE CONTRACTOR SHALL CLEAN ALL STORM SEWER PIPES AND STRUCTURES AFTER FINAL SURFACES ARE ESTABLISHED AND PRIOR TO PROJECT CLOSEOUT.
15. ALL WATER SERVICES TO HAVE A MINIMUM OF 7 1/2' COVER OVER PIPE.
16. ALL SEWER SERVICES TO BE PVC - SDR 26 OR APPROVED SUBSTITUTE.

STORM SEWER TABLE (PER SITE UTILITY PLAN)

STRUCTURE NO.	SIZE	CASTING	RIM ELEV.	INV. IN	INV. OUT	LENGTH	SIZE	TYPE	SLOPE OF DOWNSTREAM PIPE
D1	8"	CAP	-	-	895.00	65 LF	8" PVC	1.5%	
D2	8"	CAP	-	-	894.51	27 LF	8" PVC	1.5%	
D3	8"	CAP	-	-	894.50	3 LF	8" PVC	1.0% MIN.	
D4	8"	CAP	-	-	894.50	12 LF	8" PVC	1.5% MIN.	
D5	8"	CAP	-	-	894.80	6 LF	8" PVC	1.5% MIN.	
D6	8"	CAP	-	-	894.80	25 LF	8" PVC	1.5% MIN.	
CO7	8"	COVER	898.21	-	-	57 LF	10" PVC	1.5% MIN.	
CO8	8"	COVER	897.45	-	-	44 LF	10" PVC	1.5% MIN.	
CB9	48"	R-306ZV	898.40	893.40 NW	893.30 E	98 LF	12" RCP	2.0%	
CB10	48"	R-306ZV	896.54	-	-	893.04	104 LF	12" RCP	1.0%
CB11	48"	R-306ZV	896.58	894.03	893.93	95 LF	12" RCP	1.81%	
MH12	48"	R-1733	895.90±	892.00 NE	891.40	-	-	-	EXISTING 12" STUB (VERIFY)

GIS LOCATIONS (SHERBURNE COUNTY COORDINATES)

STRUCTURE NO.	NORTHING	EASTING	NOTES
D1	218504.956	584377.887	DRAIN-PER PLAN
D2	218523.040	584435.361	DRAIN-PER PLAN
D3	218467.681	584384.462	DRAIN
D4	218451.867	584368.370	DRAIN
D5	218428.915	584400.882	DRAIN
D6	218446.663	584458.470	DRAIN-PER PLAN
CO7	218468.722	584366.144	CLEAN OUT-PER PLAN
CO8	218422.505	584389.441	CLEAN OUT-PER PLAN
CB9	218426.829	584444.120	CATCH BASIN
CB10	218535.587	584322.174	CATCH BASIN
CB11	218546.892	584424.263	CATCH BASIN
MH12	218540.161	584222.444	STORM MANHOLE
MH1	218489.547	584346.830	SAN. MANHOLE
MH2	218448.047	584308.394	SAN. MANHOLE



CLEAN-OUT STRUCTURE - SEE SITE UTILITY PLAN
NOT TO SCALE

STATE LAW: 48 HOURS BEFORE EXCAVATING OR DEMOLISHING BUILDINGS, CALL (651) 454-0002 FOR FIELD LOCATION OF UNDERGROUND UTILITY LINES. (THIS SERVICE LOCATES UTILITY OWNED LINES BUT NOT PRIVATE LINES.)

THE LOCATIONS OF UNDERGROUND UTILITIES ARE SHOWN IN AN APPROXIMATE WAY ONLY AND HAVE NOT BEEN INDEPENDENTLY VERIFIED. THE EXACT LOCATION OF ALL UTILITIES MUST BE DETERMINED BEFORE COMMENCING WORK.

621 Lilac Drive North
Minneapolis, MN 55422
(763) 545-9196
Fax (763) 525-1666
www.clark-eng.com

CLARK ENGINEERING CORPORATION

HEREBY CERTIFY THAT THIS PLAN, SPECIFICATION, OR REPORT WAS PREPARED BY ME OR UNDER MY DIRECT SUPERVISION, AND THAT I AM A FULLY LICENSED LAND SURVEYOR UNDER THE LAWS OF THE STATE OF MINNESOTA.

DAN R. WESTERGAARD, L.S. 04/17/2007
LIC. NO. 19790 DATE

RECORD GIS LOCATION PLAN

M & I BANK
ELK RIVER
ELK RIVER, MINNESOTA

SHEET TITLE: RECORD GIS LOCATION PLAN
PROJECT: M & I BANK ELK RIVER, MINNESOTA

DATE: _____

REVISIONS:

DRAWN BY	DSB
CHECKED BY	DRW
DATE	01/28/07
PROJECT NO.	V07003
SHEET NO.	1