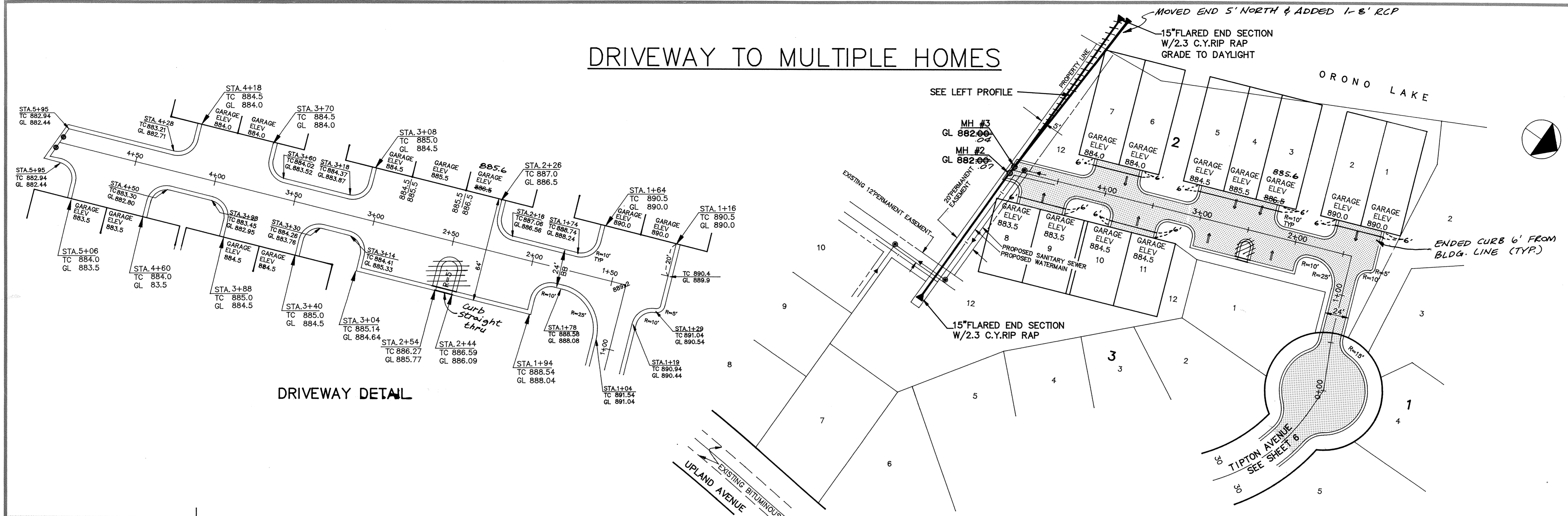
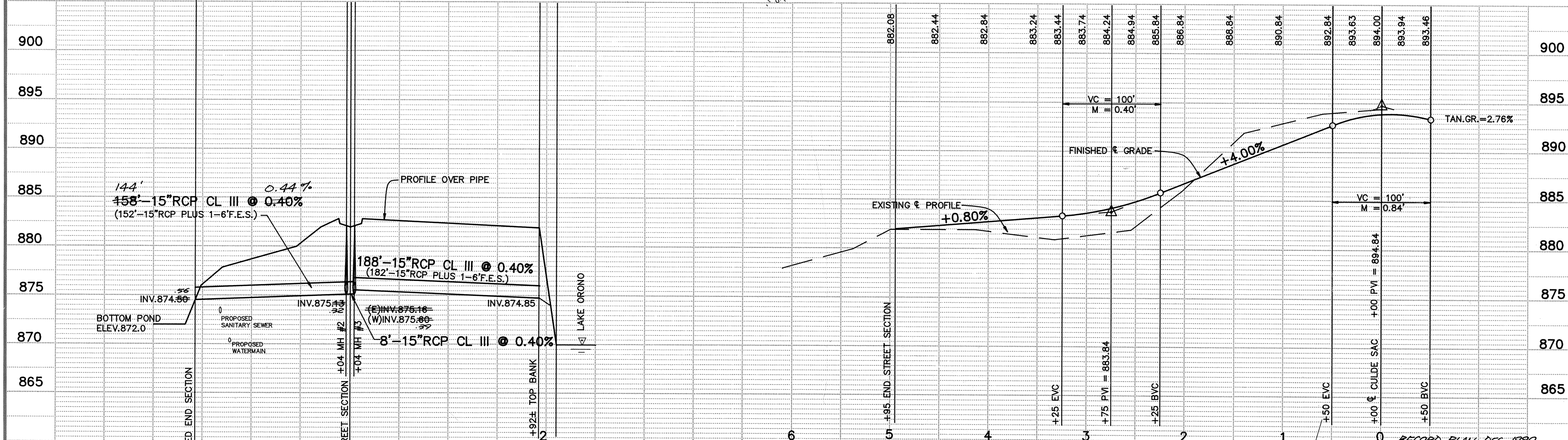


DRIVEWAY TO MULTIPLE HOMES



DRIVEWAY DETAIL



I HEREBY CERTIFY THAT THIS PLAN, SPECIFICATION, OR REPORT WAS PREPARED BY ME OR UNDER MY DIRECT SUPERVISION AND THAT I AM A DULY REGISTERED PROFESSIONAL ENGINEER UNDER THE LAWS OF THE STATE OF MINNESOTA.

Tony J. Maier
 DATE 4/17/90 REG. NO. 15316

MS&A CONSULTING ENGINEERS
Maier Stewart & Associates Inc.
 1959 SLOAN PLACE (612) 774-6021 ST. PAUL, MINNESOTA 55117

DATE	DESCRIPTION	DESIGNED
		CHECKED
		DRAWN
		GRAPHIC SCALE
		° HORIZ. 50
		° VERT. 5

CITY OF ELK RIVER
STREET AND STORM SEWER DRIVEWAY TO MULTIPLE HOMES
 RECORD PLAN DEC. 1990
 DATE MARCH 1990 SHEET 7 OF 11 SHEETS PROJECT NO. 230-086