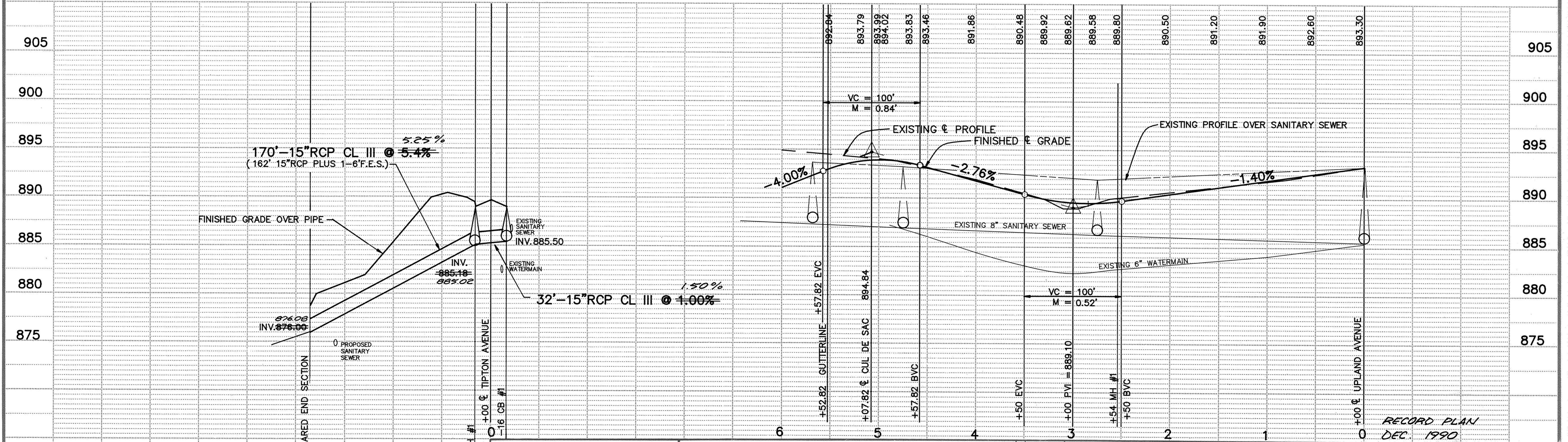
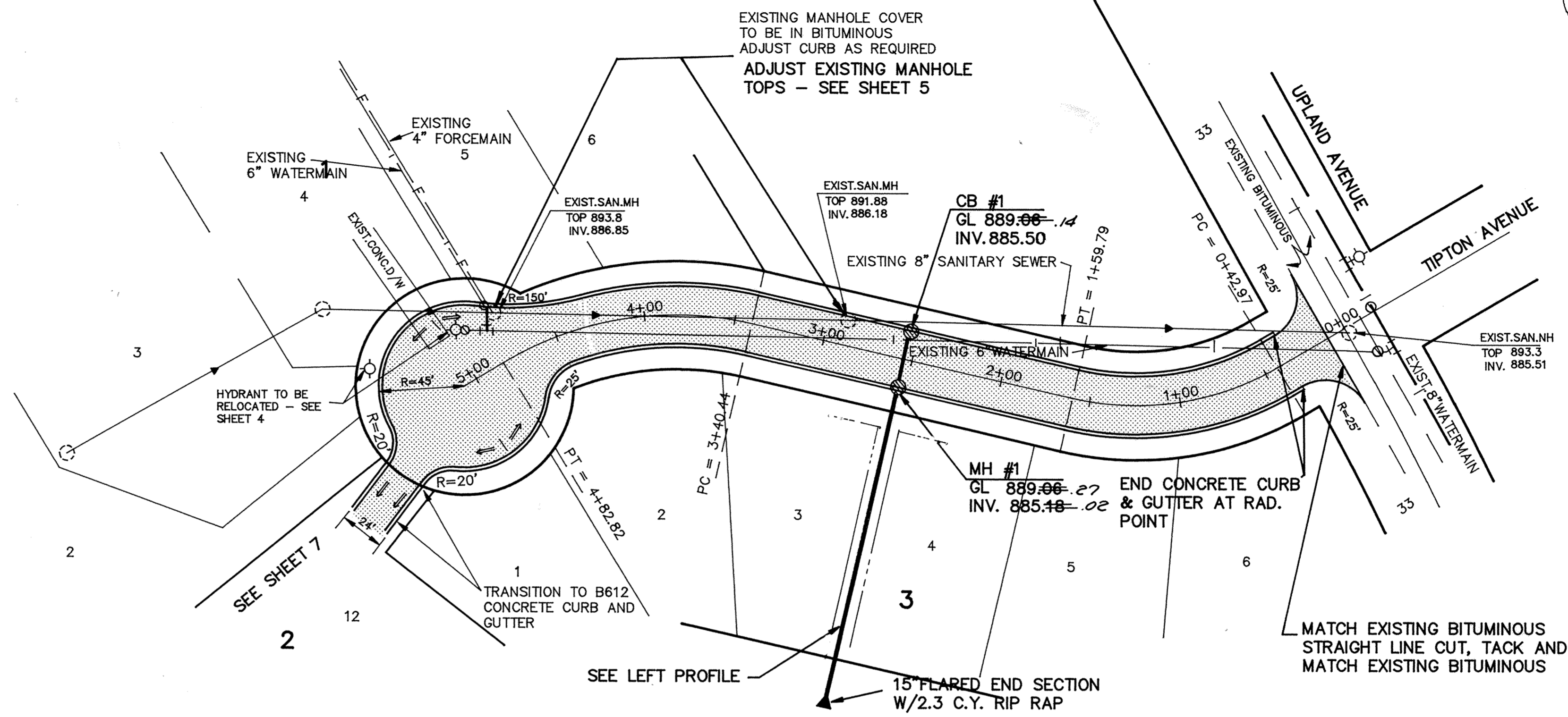


TIPTON AVENUE



I HEREBY CERTIFY THAT THIS PLAN, SPECIFICATION, OR REPORT WAS PREPARED BY ME OR UNDER MY DIRECT SUPERVISION AND THAT I AM A DULY REGISTERED PROFESSIONAL ENGINEER UNDER THE LAWS OF THE STATE OF MINNESOTA.

Kevin J. Mauer
 DATE 4/17/90 REG. NO. 15316

MS&A CONSULTING ENGINEERS
 Maier Stewart & Associates Inc.
 1959 SLOAN PLACE (612) 774-6021 ST. PAUL, MINNESOTA 55117

REVISIONS	DATE	DESCRIPTION

DESIGNED	
CHECKED	
DRAWN	
GRAPHIC SCALE	

CITY OF ELK RIVER
 STREET AND STORM SEWER
 TIPTON AVENUE

DATE MARCH, 1990 SHEET 6 OF 11 SHEETS PROJECT NO. 230-086