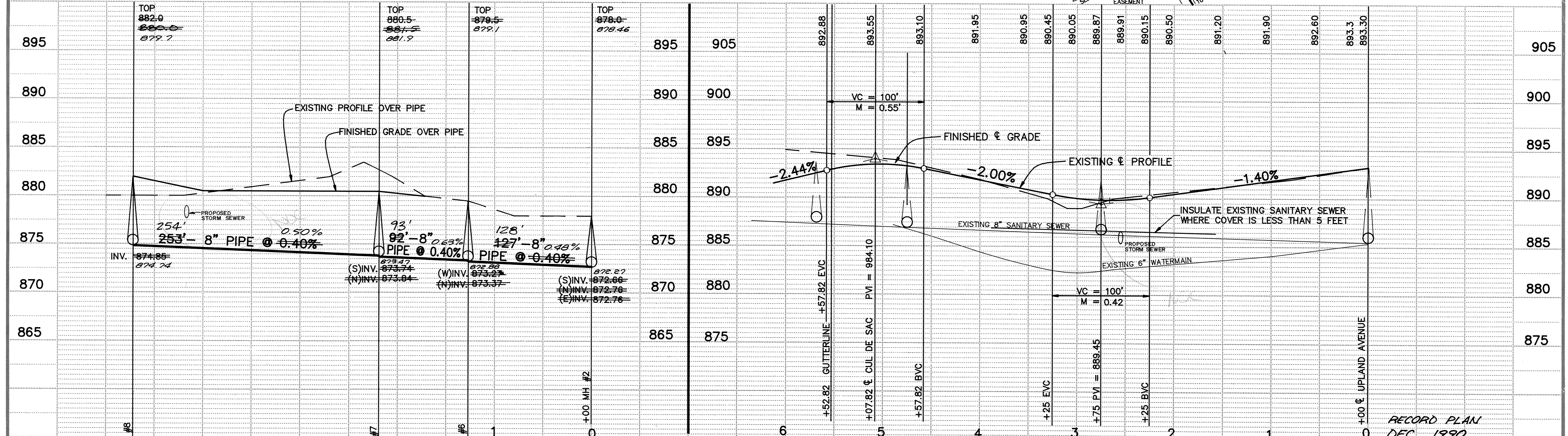
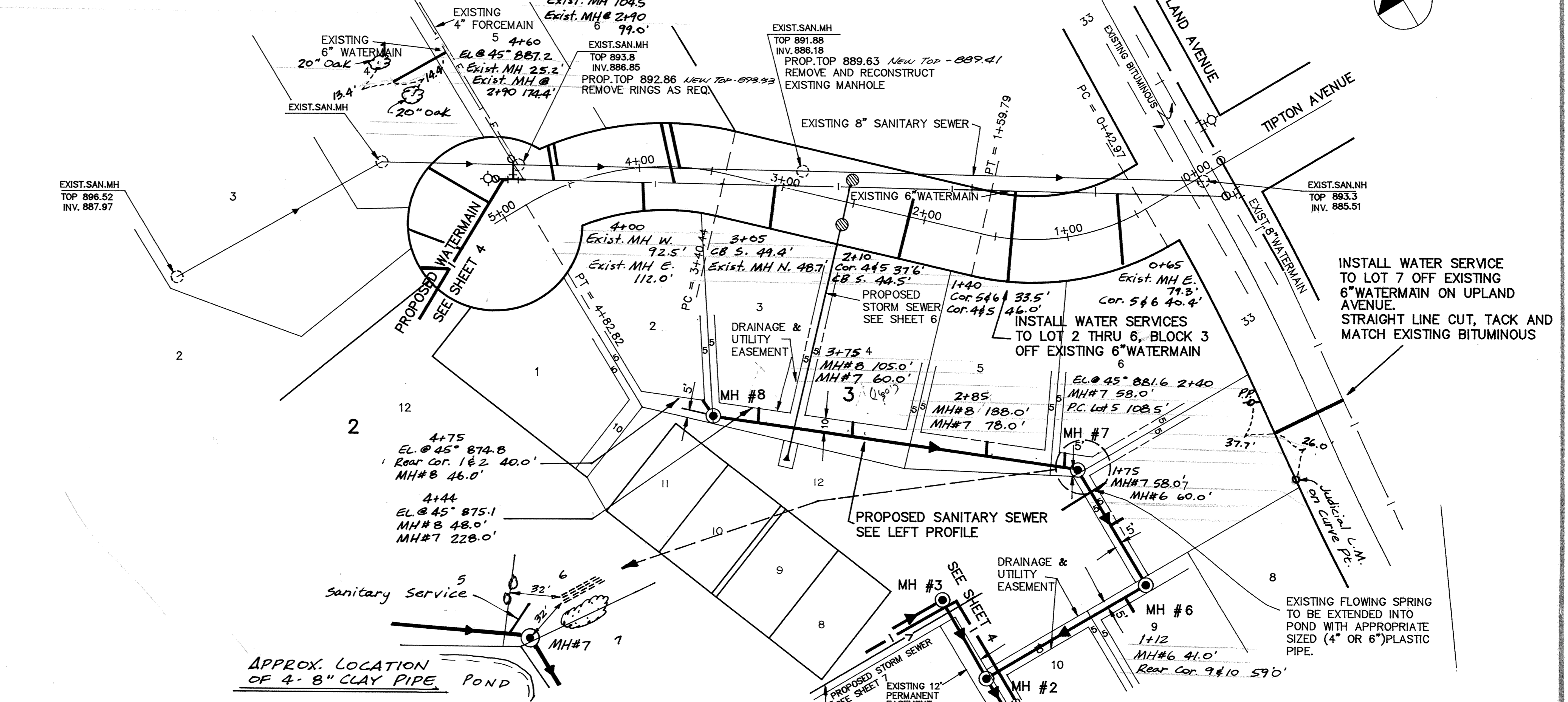


\* AS-BUILT NOTE: WATERMAIN IS ON EAST SIDE OF FORCEMAIN

# TIPTON AVENUE



I HEREBY CERTIFY THAT THIS PLAN, SPECIFICATION, OR REPORT WAS PREPARED BY ME OR UNDER MY DIRECT SUPERVISION AND THAT I AM A DULY REGISTERED PROFESSIONAL ENGINEER UNDER THE LAWS OF THE STATE OF MINNESOTA.

*Tom J. Mann*

DATE 4/17/90 REG. NO. 15316

**MS&A** CONSULTING ENGINEERS  
**Maier Stewart & Associates Inc.**  
 1959 SLOAN PLACE (612) 774-6021 ST. PAUL, MINNESOTA 55117

DATE	DESCRIPTION	DESIGNED
		CHECKED
		DRAWN
		GRAPHIC SCALE
		0' HORIZ. 50'
		0' VERT. 5'

**CITY OF ELK RIVER**  
**SANITARY SEWER AND WATERMAIN**  
**TIPTON AVENUE**

RECORD PLAN  
DEC 1990

DATE MARCH, 1990 SHEET 5 OF 11 SHEETS PROJECT NO. 230-086