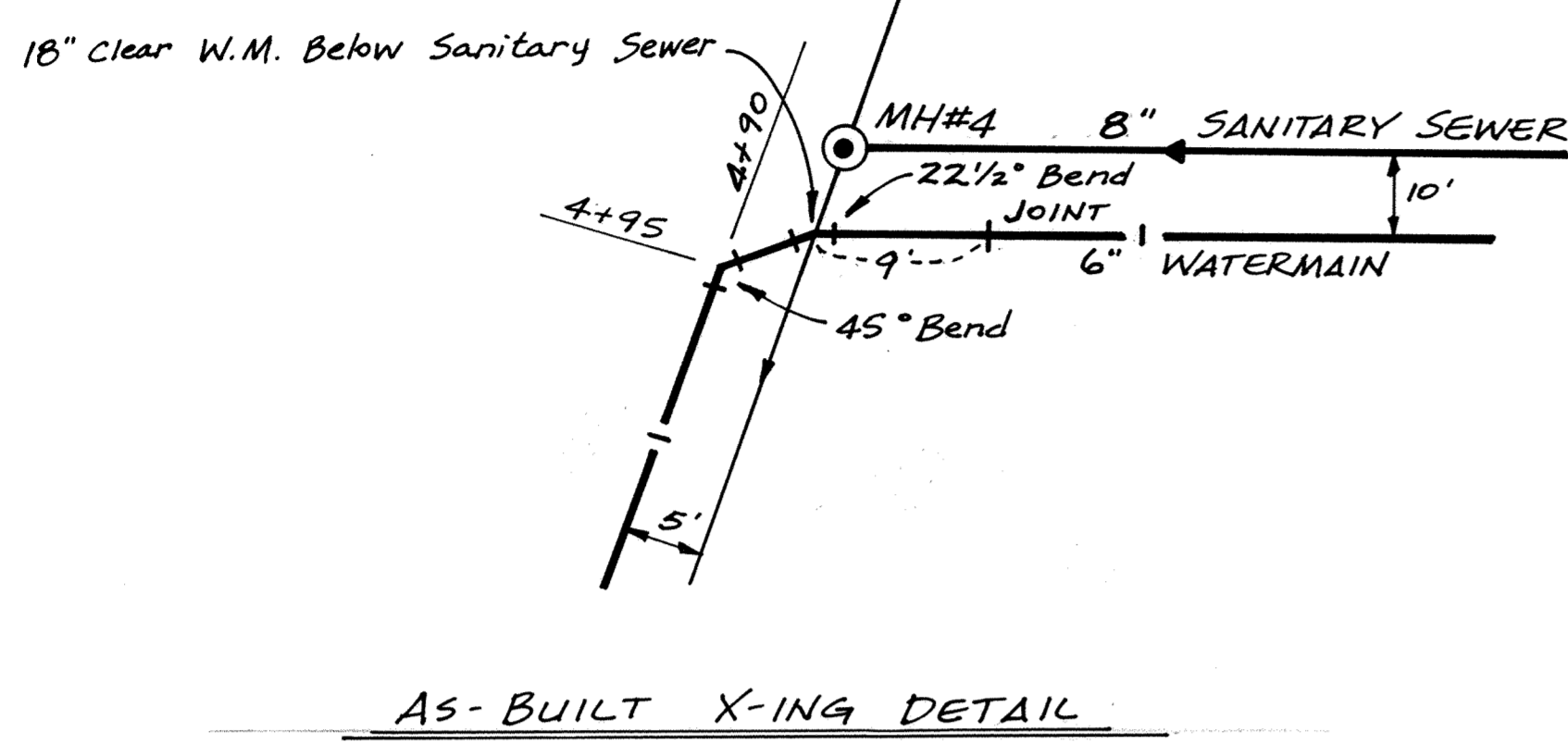
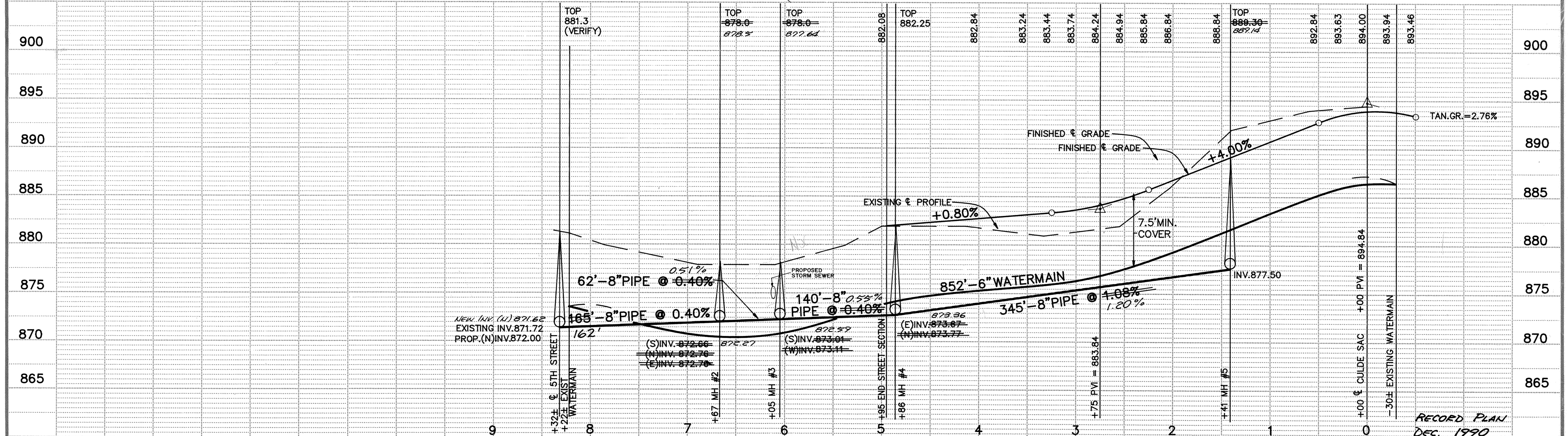
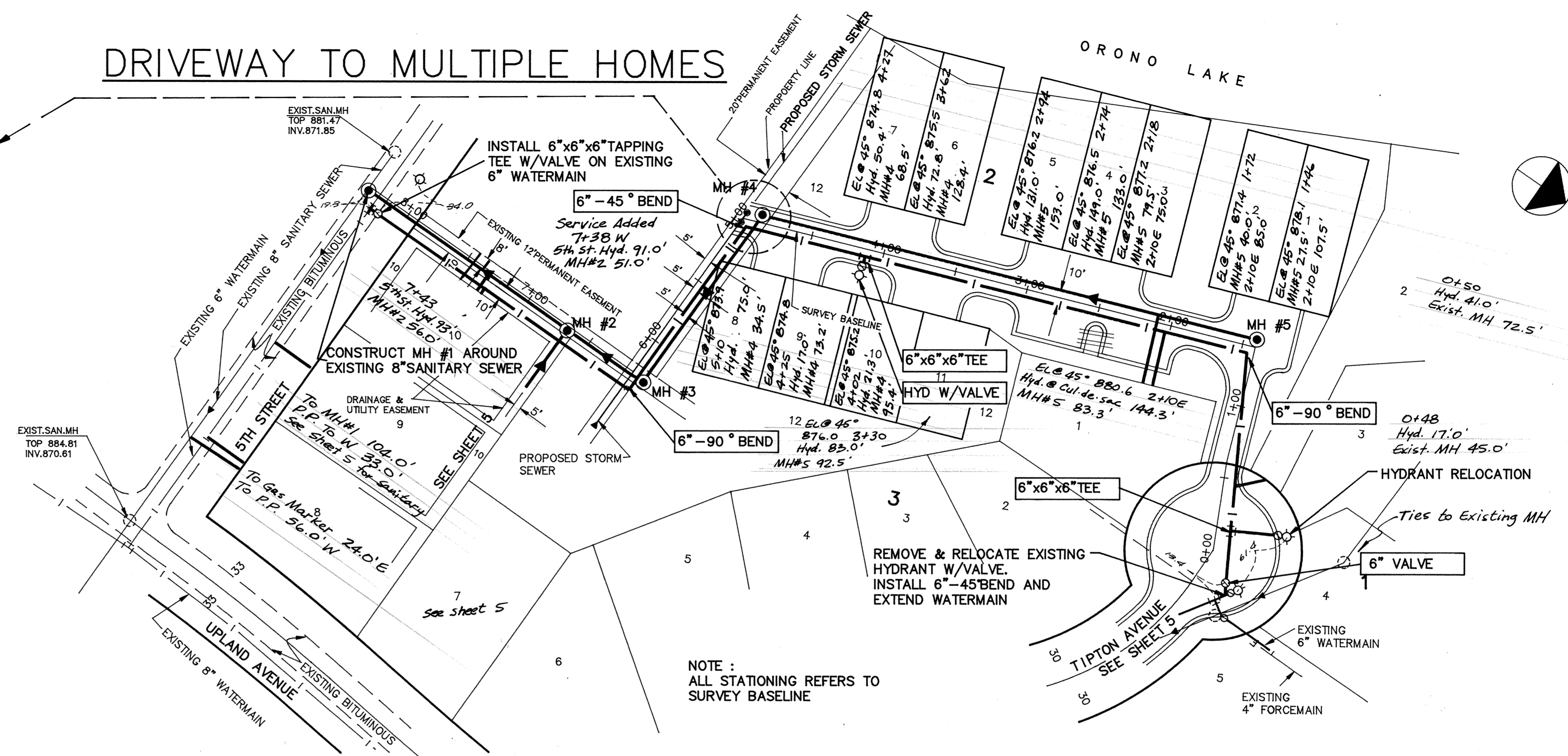


# DRIVEWAY TO MULTIPLE HOMES

ORONO LAKE



- NOTE:
- RESTORATION OF 5TH STREET AND UPLAND AVENUE SHALL CONSIST OF 5 INCHES OF CLASS 5 AND 2 1/2 INCHES OF BITUMINOUS WEAR (MNDOT 2341). PATCH AREA SHALL BE STRAIGHT LINE CUT AND TACKED PRIOR TO RESTORATION. RESTORATION OF EXISTING BITUMINOUS SURFACING SHALL BE COMPLETED WITHIN 5 WORKING DAYS AFTER INITIAL EXCAVATION. APPROPRIATE WARNING DEVICES, APPROVED BY CITY ENGINEER, SHALL BE AVAILABLE BEFORE EXCAVATION AND SHALL REMAIN IN PLACE UNTIL THE AREA IS TOTALLY RESTORED.
  - EXTEND 4" SANITARY SEWER AND 1" WATER SERVICE TO PROPERTY LINE OF MULTIPLE DWELLING LOTS 1-11.



I HEREBY CERTIFY THAT THIS PLAN, SPECIFICATION, OR REPORT WAS PREPARED BY ME OR UNDER MY DIRECT SUPERVISION AND THAT I AM A DULY REGISTERED PROFESSIONAL ENGINEER UNDER THE LAWS OF THE STATE OF MINNESOTA.

*Serry J. Maier*

DATE 4/17/90 REG. NO. 15316

**MSA** CONSULTING ENGINEERS

Maier Stewart & Associates Inc.

1959 SLOAN PLACE (612) 774-6021 ST. PAUL, MINNESOTA 55117

DATE	DESCRIPTION	DESIGNED
		CHECKED
		DRAWN <i>982</i>
		GRAPHIC SCALE
		0 HORIZ. SCALE 50'
		0 VERT. SCALE 5'

CITY OF ELK RIVER

SANITARY SEWER AND WATERMAIN

DRIVEWAY TO MULTIPLE HOMES

DATE MARCH 1990 SHEET 4 OF 11 SHEETS PROJECT NO. 230-086