

ALLIANCE MACHINE

PRELIMINARY UTILITY PLAN

City of Elk River, Minnesota

GENERAL NOTES:

- 1) THE INFORMATION SHOWN ON THESE DRAWINGS CONCERNING TYPE AND LOCATION OF EXISTING UTILITIES IS NOT GUARANTEED TO BE ACCURATE OR COMPLETE. THE CONTRACTOR IS RESPONSIBLE FOR MAKING HIS OWN DETERMINATION AS TO THE TYPE AND LOCATION OF UTILITIES AS MAY BE NECESSARY TO AVOID DAMAGE TO THESE UTILITIES.
- 2) CONTRACTOR SHALL ONE-CALL AT 855-454-0002 FOR EXISTING UTILITY LOCATIONS.
- 3) THE CONTRACTOR SHALL FIELD VERIFY SIZE, LOCATION, AND ELEVATION OF EXISTING SANITARY SEWER, WATER MAIN, AND STORM SEWER AND NOTIFY ENGINEER OF ANY DISCREPANCIES PRIOR TO THE START OF INSTALLATIONS.
- 4) INSTALLATIONS SHALL CONFORM TO THE CITY ENGINEERS ASSOCIATION OF MINNESOTA (CEAM) STANDARD UTILITY SPECIFICATIONS (1999 EDITION) AND THE CITY OF ELK RIVER STANDARD SPECIFICATIONS.
- 5) CONTRACTOR SHALL NOTIFY CITY OF ELK RIVER A MINIMUM OF 24 HOURS PRIOR TO ANY INTERRUPTION OF SANITARY SEWER OR WATER SERVICE TO EXISTING HOMES OR BUSINESSES.
- 6) CONTACT CITY OF ELK RIVER PUBLIC WORKS DEPARTMENT FOR INSPECTION OF ALL UTILITY WORK.

STORM SEWER NOTES:

- 1) STORM SEWER SHALL BE RCP (CLASS III MINIMUM) OR HDPE UNLESS OTHERWISE NOTED ON PLANS.
- 2) STORM SEWER LENGTHS INCLUDE THE LAYING LENGTH OF THE APRON.
- 3) SEE DETAILS FOR ADDITIONAL STORMTECH INFORMATION.

WATER MAIN NOTES:

- 1) MAINTAIN MINIMUM OF 7.5 FEET OF COVER OVER WATER SERVICE.
- 2) WATER SERVICE TO BUILDING SHALL BE 1" COPPER TYPE K UNLESS NOTED OTHERWISE ON PLANS.
- 3) SPRINKLER SERVICE TO BUILDING SHALL BE 8" DIP CLASS S2 UNLESS OTHERWISE NOTED.
- 4) FIELD VERIFY SIZE AND LOCATION OF EXISTING WATERMAIN AND NOTIFY ENGINEER OF ANY DISCREPANCIES PRIOR TO THE START OF CONSTRUCTION.
- 5) CURB STOP AND GATE VALVES SHALL BE STAMPED "WATER".

SANITARY SEWER NOTES:

- 1) EXISTING SANITARY SEWER LOCATIONS SHALL BE VERIFIED IN FIELD PRIOR TO CONSTRUCTION.
- 2) SANITARY SEWER SERVICE TO BUILDING SHALL BE 8" PVC SCHEDULE 35 UNLESS OTHERWISE NOTED.
- 3) PROVIDE FORD TYPE A SINGLE LID COVER OVER ALL CLEAN-OUTS. LID SHALL BE STAMPED "SEWER C/O".
- 4) FIELD VERIFY LOCATION, SIZE AND INVERT ELEVATION OF EXISTING SANITARY SEWER AND NOTIFY ENGINEER OF ANY DISCREPANCIES PRIOR TO THE START OF CONSTRUCTION.

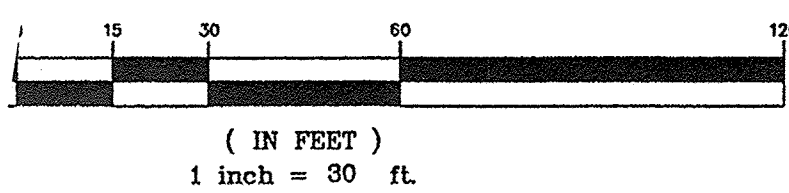
CONTRACTOR SHALL FIELD VERIFY LOCATION AND ELEVATION OF EXISTING UTILITIES AND NOTIFY ENGINEER OF ANY DISCREPANCIES PRIOR TO THE START OF CONSTRUCTION.

A ROCK CONSTRUCTION ACCESS ROAD SHALL BE INSTALLED AND MAINTAINED AT ENTRANCES TO EXISTING HARD SURFACE ROADS. ROCK ENTRANCE SHALL BE NO LESS THAN 50 FEET IN LENGTH AND AS WIDE AS NECESSARY FOR TRAFFIC. USE 1" TO 2" WASHED ROCK.

STRUCTURE NUMBER	STRUCTURE TYPE	NEENAH CASTINGS
CB 1	48" DIA	R-3067
CB 2	27" DIA	R-2668

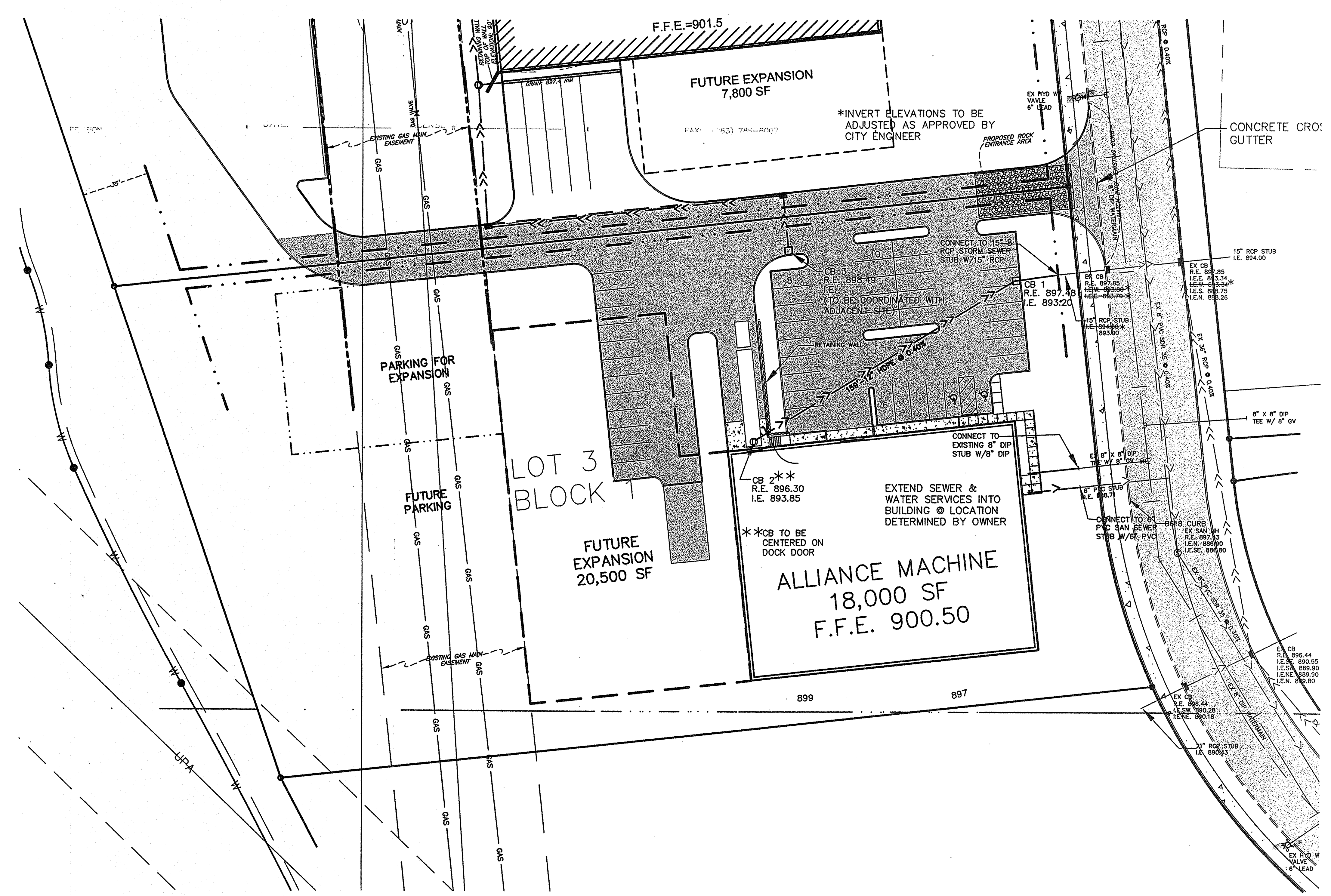
STORM SEWER STRUCTURES SCHEDULE

GRAPHIC SCALE



LEGEND:

- I — Existing Watermain
- >> — Existing Storm Sewer
- > — Existing Sanitary Sewer
- I — Proposed Watermain
- >> — Proposed Storm Sewer
- > — Proposed Sanitary Sewer
- ⊙ Existing Hydrant
- ⊙ Existing Sanitary Manhole
- ⊙ Proposed Catch Basin/Manhole
- Direction of Surface Drainage
- 980 — Proposed Contour
- 980 — Existing Contour
- s — Silt Fence
- x880.85 Proposed Spot Elevation
(Note: Proposed spot elevations shown are ground surfaces, situmous surfaces, or gutter line unless otherwise noted.)
- ⊙ Existing Spot Elevation



DESIGNED BY: C.W.P.	9-7-05	ADJUST GRADES TO MATCH CDI PLAN
DRAWN BY: C.A.U.	9-19-05	ADJUST GRADES TO MATCH CDI PLAN
CHECKED BY: C.W.P.		
PROJECT NO: 05986	DATE	REVISION

I hereby certify that this plan was prepared by me or under my direct supervision and that I am a duly Licensed Professional Engineer under the laws of the State of Minnesota.

Charles W. Plowe
Charles W. Plowe

DATE: 9/19/05 LICENSE # 18227

SITE PLANNING
Plowe Engineering, Inc.
9180 LEXINGTON AVENUE N.E.
CIRCLE PINES MN 55014-3625
PHONE: (763) 785-1043
FAX: (763) 785-8007

ENGINEERING
Blumentals/Architecture, Inc.
6235 Earle Brown Drive
D-Barn/Suite 100
Brooklyn Center, MN 55430
(763) 561-5757

ARCHITECT:
Alliance Machine
Northstar Business Park
Elk River, MN

PREPARED FOR:
Alliance Machine
Northstar Business Park
Elk River, MN

DATE: 8-29-05
SHEET
C2