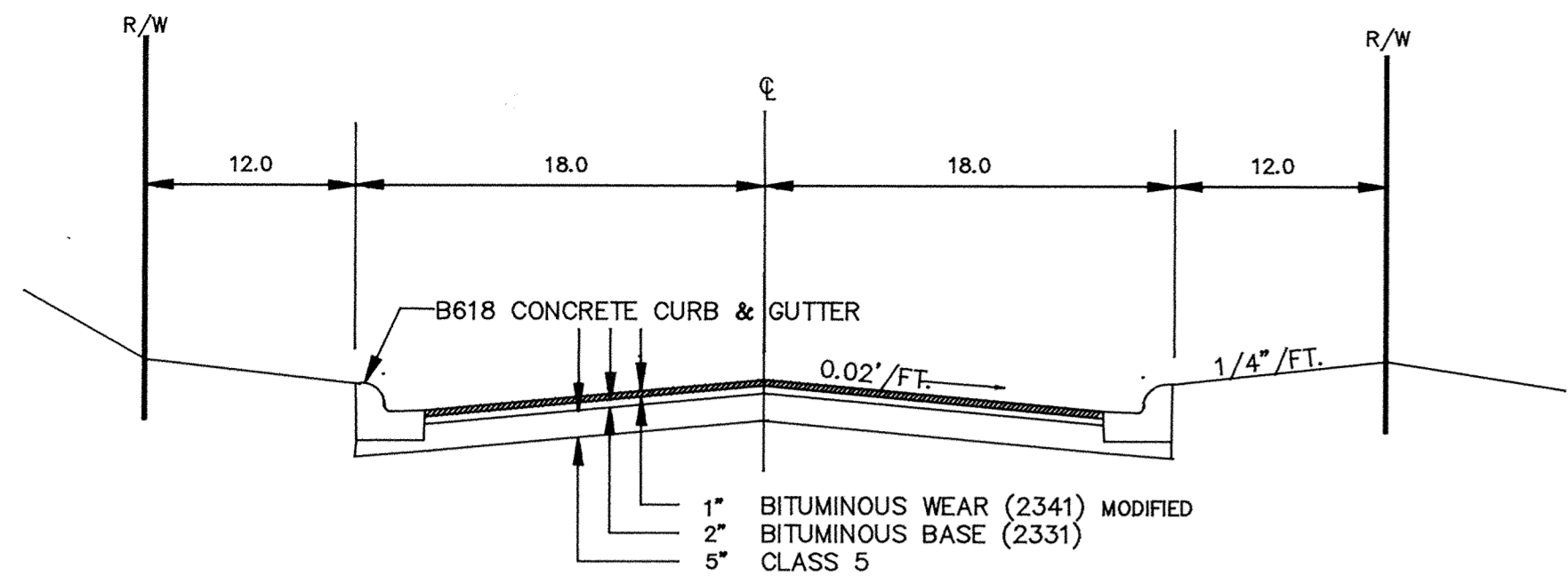
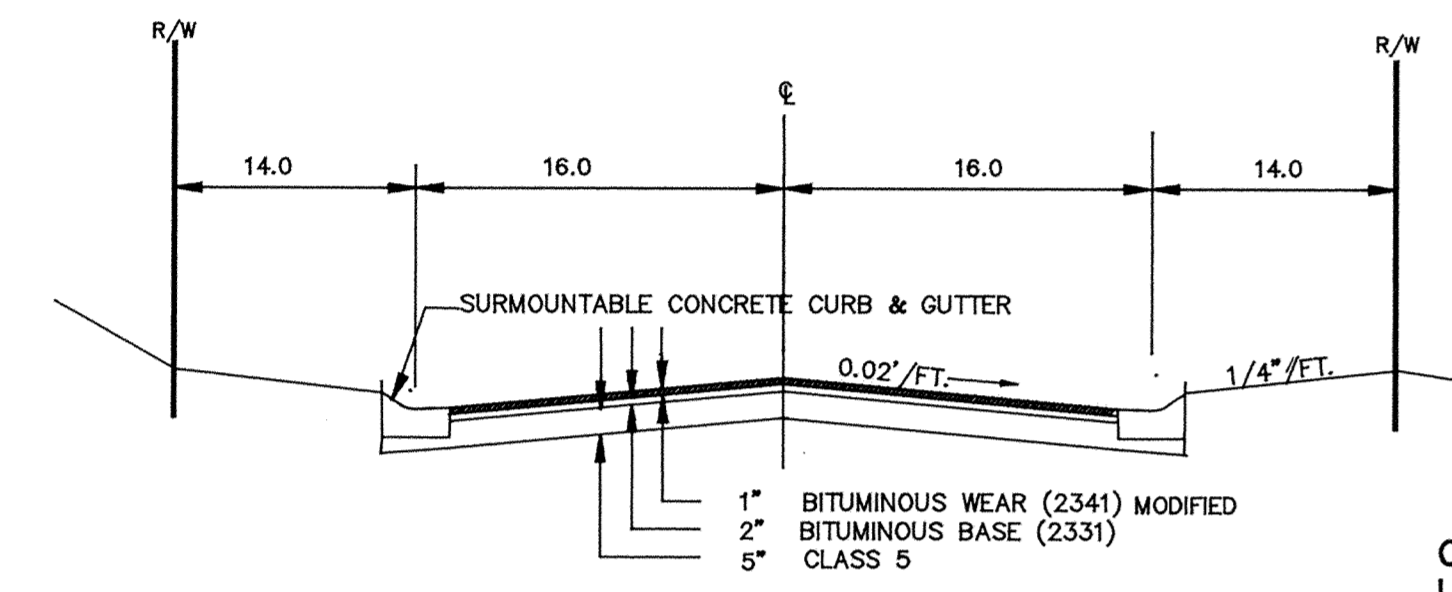


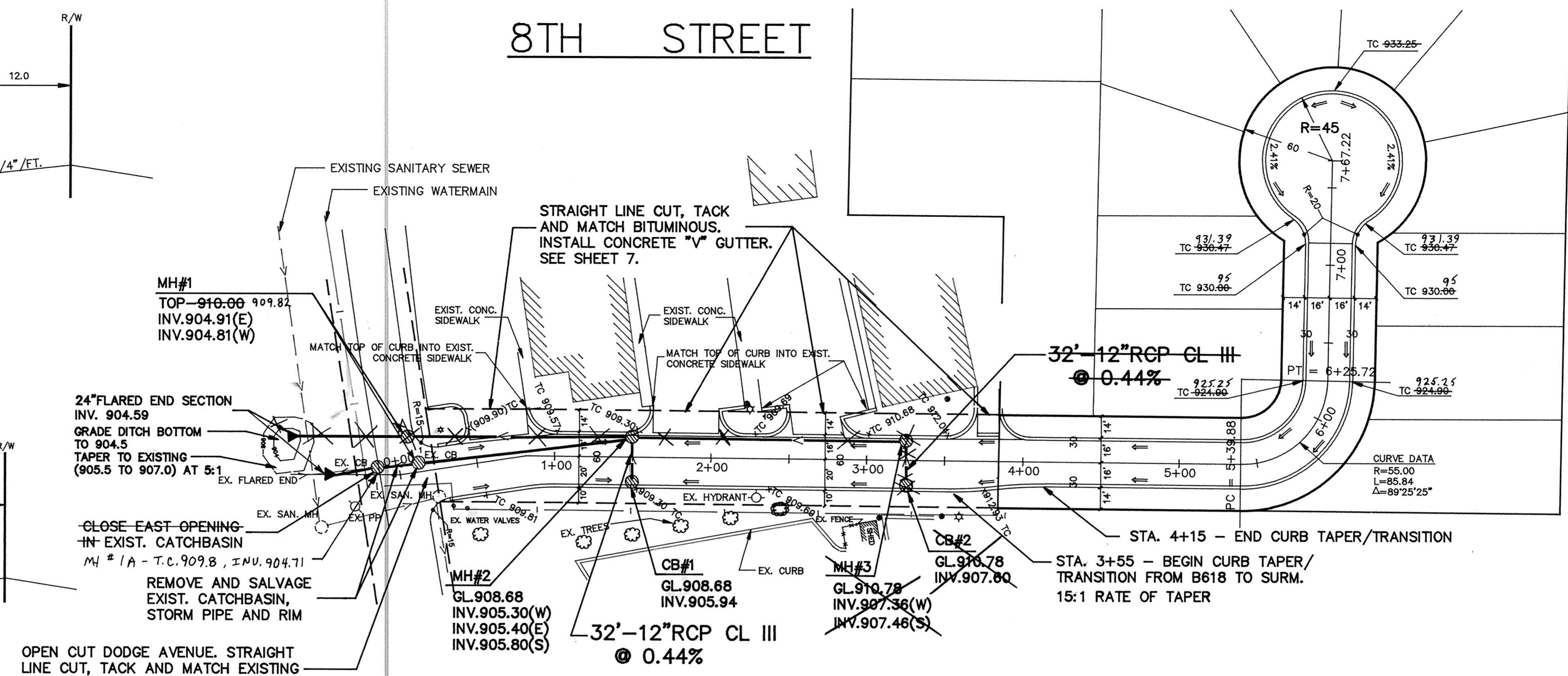
# 8TH STREET



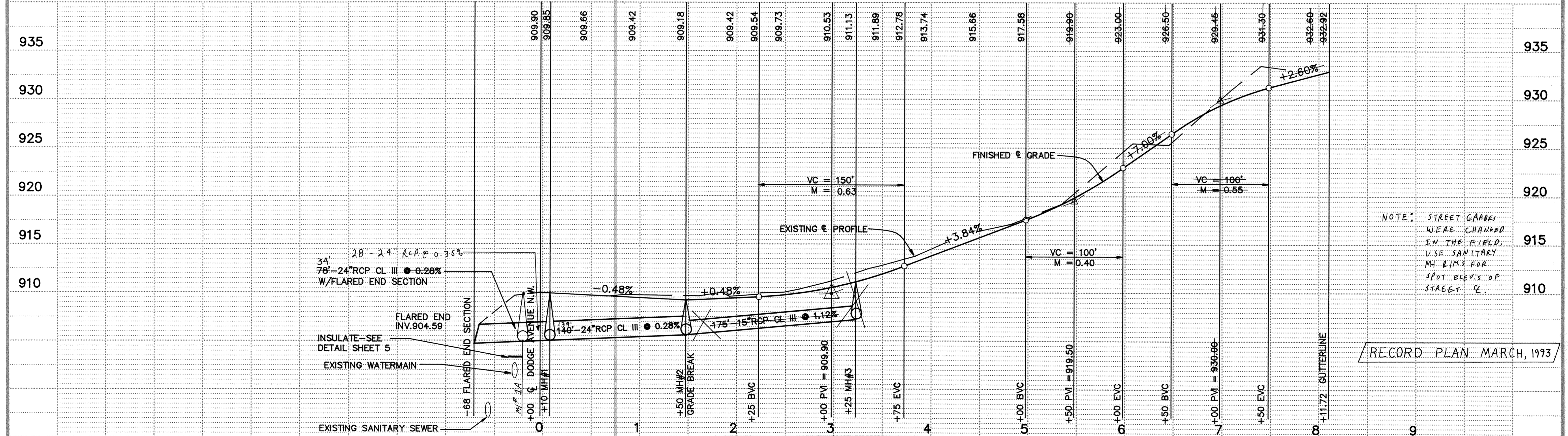
TYPICAL STREET SECTION



TYPICAL STREET SECTION



NOTE: ALL CONSTRUCTION INVOLVING DODGE AVENUE TO BE COMPLETED WITHIN 48 HOURS OF COMMENCEMENT.



NOTE: STREET GRADES WERE CHANGED IN THE FIELD, USE SANITARY MH RIMS FOR SPOT ELEV'S OF STREET &.

RECORD PLAN, MARCH, 1993

I HEREBY CERTIFY THAT THIS PLAN, SPECIFICATION, OR REPORT WAS PREPARED BY ME OR UNDER MY DIRECT SUPERVISION AND THAT I AM A DULY REGISTERED PROFESSIONAL ENGINEER UNDER THE LAWS OF THE STATE OF MINNESOTA.

*Terry J. Maier*  
DATE 3/29/91 REG. NO. 15316

**MSA** CONSULTING ENGINEERS  
Maier Stewart & Associates Inc.  
1959 SLOAN PLACE (612)774-6021 ST. PAUL, MINNESOTA 55117

DATE	DESCRIPTION	DESIGNED
		CHECKED
		DRAWN EY
		GRAPHIC SCALE
		° HORIZ. 50
		° VERT. 5

CITY OF ELK RIVER  
STORM SEWER AND STREET CONSTRUCTION  
8TH STREET

DATE MAR. 1991 SHEET 3 OF 7 SHEETS PROJECT NO. 230-102-20