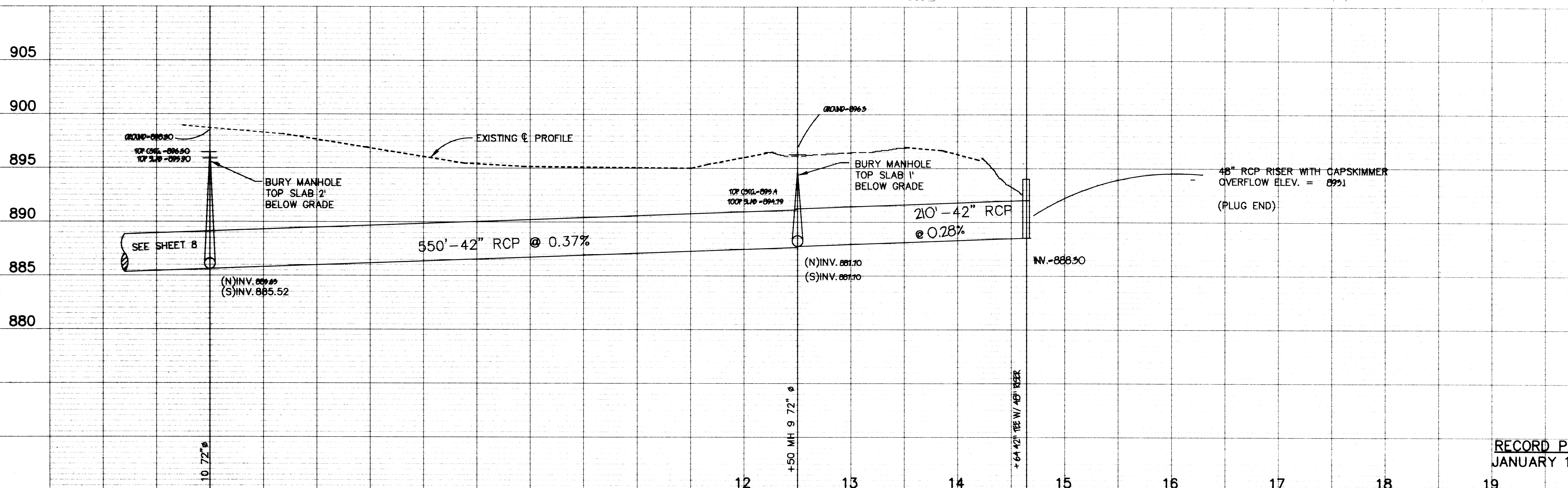
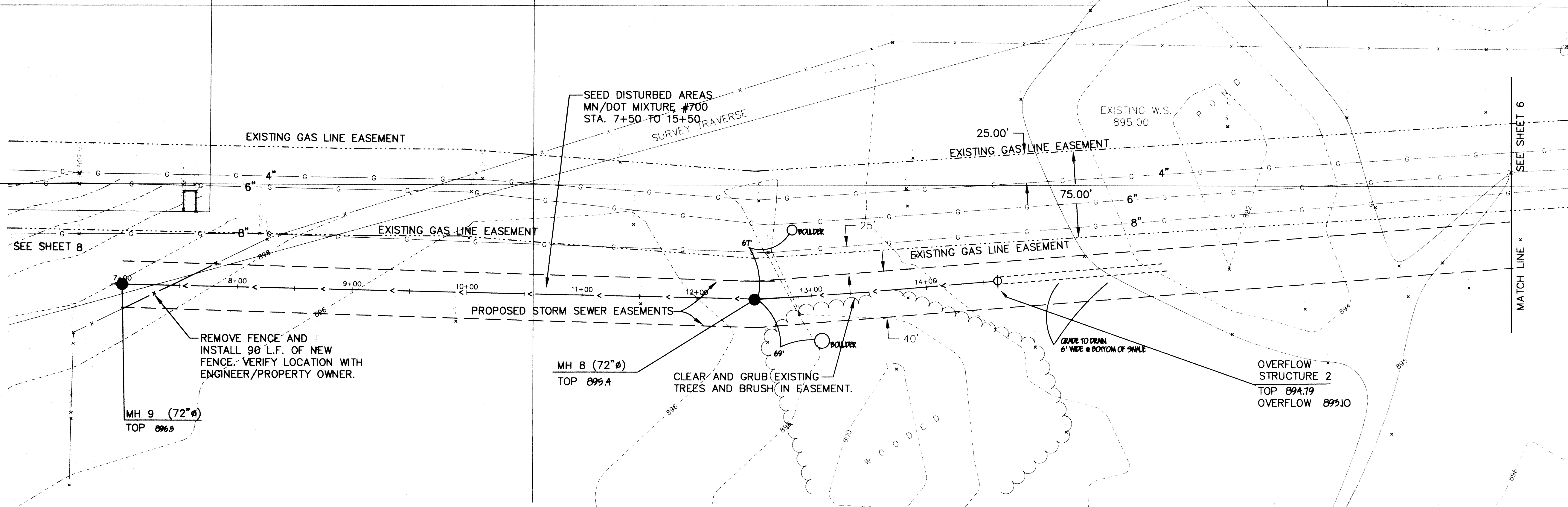


STORM SEWER

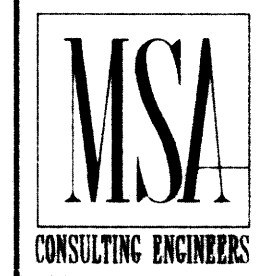


RECORD PLAN
JANUARY 1994

CITY OF ELK RIVER
STORM SEWER IMPROVEMENT

I HEREBY CERTIFY THAT THIS PLAN, SPECIFICATION, OR REPORT WAS PREPARED BY ME OR UNDER MY DIRECT SUPERVISION AND THAT I AM A DULY REGISTERED PROFESSIONAL ENGINEER UNDER THE LAWS OF THE STATE OF MINNESOTA.

Sam J. Mauer
DATE 5/12/94 REG. NO. 15316



1326 ENERGY PARK DRIVE
ST. PAUL, MINNESOTA 55108
(612) 644-4389

9800 SHELARD PARKWAY
MINNEAPOLIS, MINNESOTA 55441
(612) 546-0432

DATE	DESCRIPTION	DESIGNED	DEN.
		CHECKED	
		DRAWN	TPC
GRAPHIC SCALE			
0 HORIZ. 50			
0 VERT. 5			