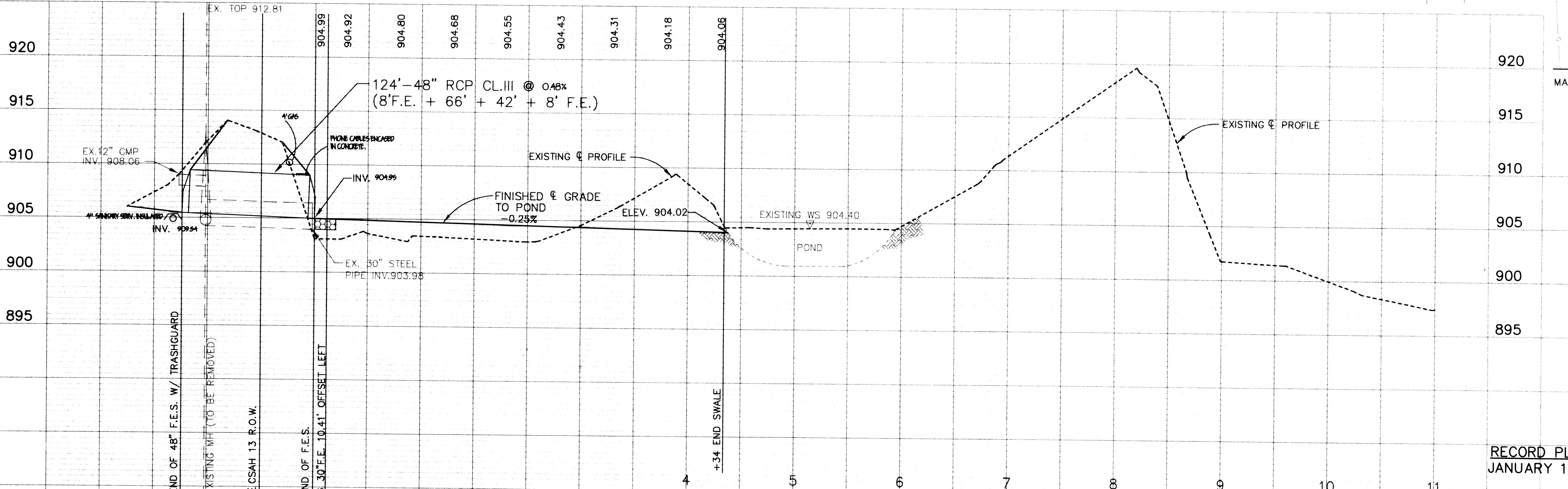
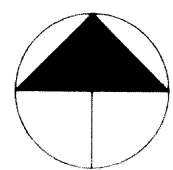
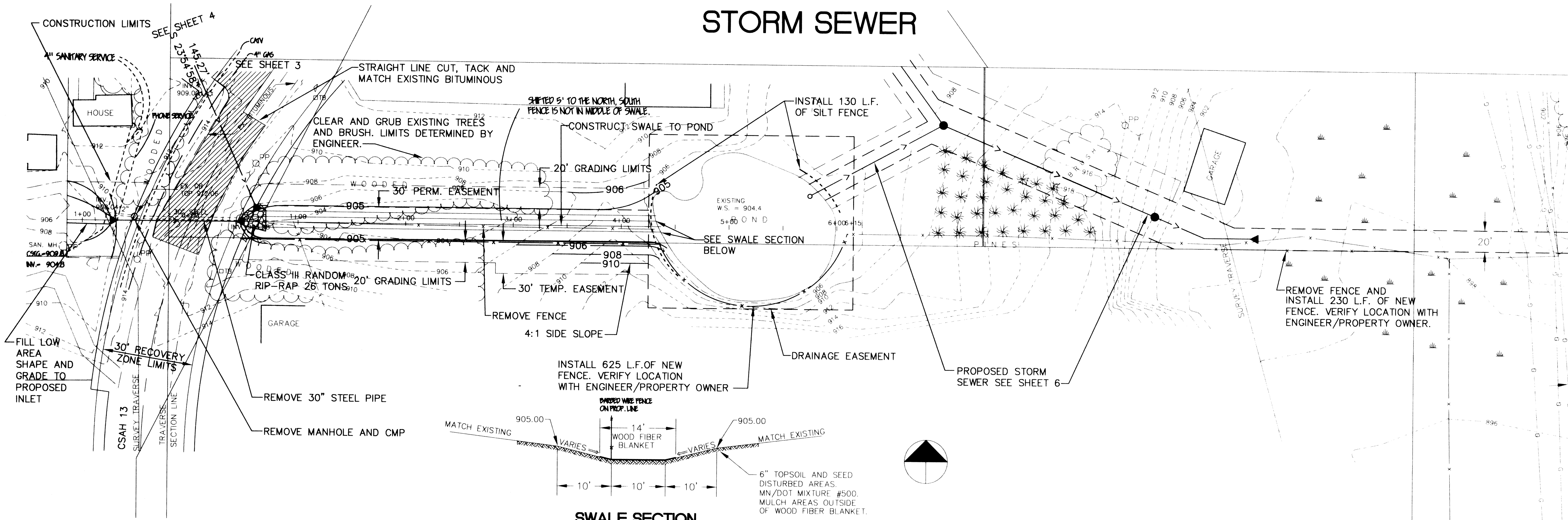


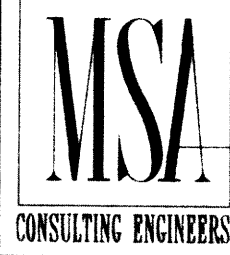
# STORM SEWER



RECORD PLAN  
JANUARY 1994

I HEREBY CERTIFY THAT THIS PLAN, SPECIFICATION, OR REPORT WAS PREPARED BY ME OR UNDER MY DIRECT SUPERVISION AND THAT I AM A DULY REGISTERED PROFESSIONAL ENGINEER UNDER THE LAWS OF THE STATE OF MINNESOTA.

*James J. Maurer*  
DATE 5/12/94 REG. NO. 15,316



1326 ENERGY PARK DRIVE  
ST. PAUL, MINNESOTA 55108  
(612) 644-4389

9800 SHELARD PARKWAY  
MINNEAPOLIS, MINNESOTA 55441  
(612) 546-0432

REVISIONS	DATE	DESCRIPTION	DESIGNED	DEN
			CHECKED	
			DRAWN	TPC
			GRAPHIC SCALE	
			HORIZ. 50	
			VERT. 5	

CITY OF ELK RIVER  
STORM SEWER IMPROVEMENT

DATE APR, 1994 SHEET 5 OF 11 SHEETS