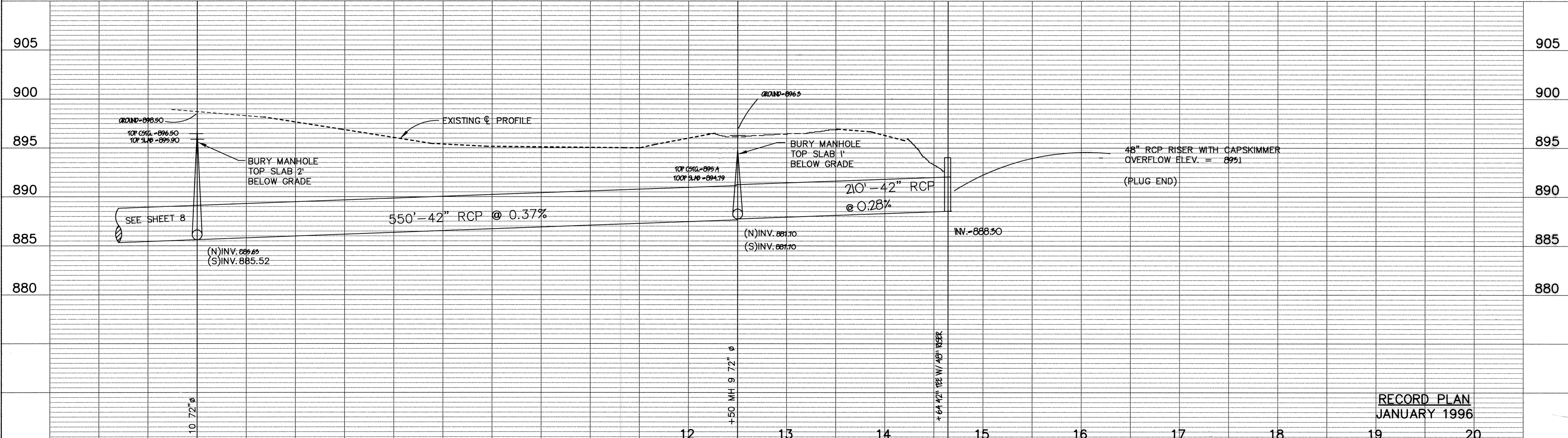
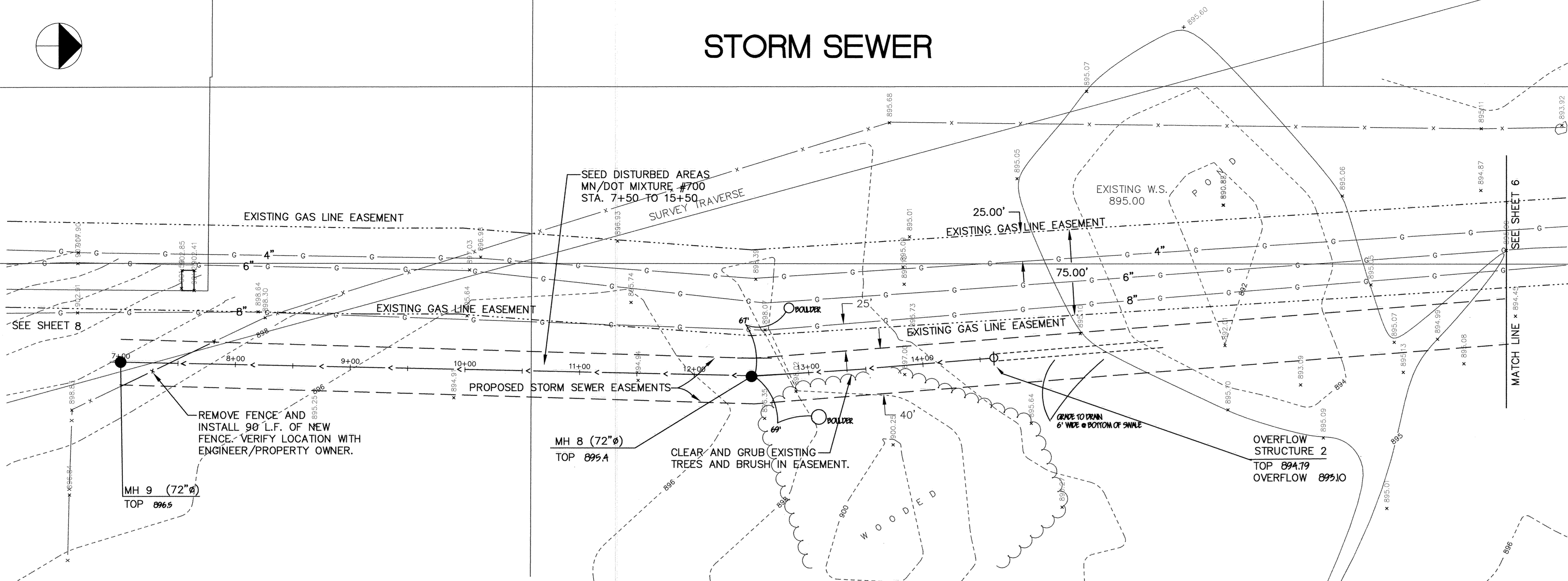


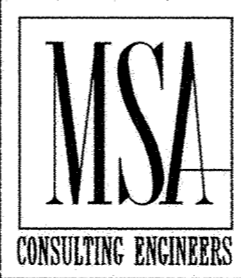
STORM SEWER



RECORD PLAN
JANUARY 1996

I HEREBY CERTIFY THAT THIS PLAN, SPECIFICATION, OR REPORT WAS PREPARED BY ME OR UNDER MY DIRECT SUPERVISION AND THAT I AM A DULY REGISTERED PROFESSIONAL ENGINEER UNDER THE LAWS OF THE STATE OF MINNESOTA.

John J. Mauer
DATE *5/12/94* REG. NO. *15316*



1326 ENERGY PARK DRIVE
ST. PAUL, MINNESOTA 55108
(612) 644-4389

9800 SHELARD PARKWAY
MINNEAPOLIS, MINNESOTA 55441
(612) 546-0432

DATE	DESCRIPTION	DESIGNED	DEN.
		CHECKED	
		DRAWN	TPC
		GRAPHIC SCALE	
		0' HORIZ. 50'	
		0' VERT. 5'	

CITY OF ELK RIVER		STORM SEWER IMPROVEMENTS	
DATE	APR, 1994	SHEET	7 OF 11 SHEETS
PROJECT NO.		230-211	