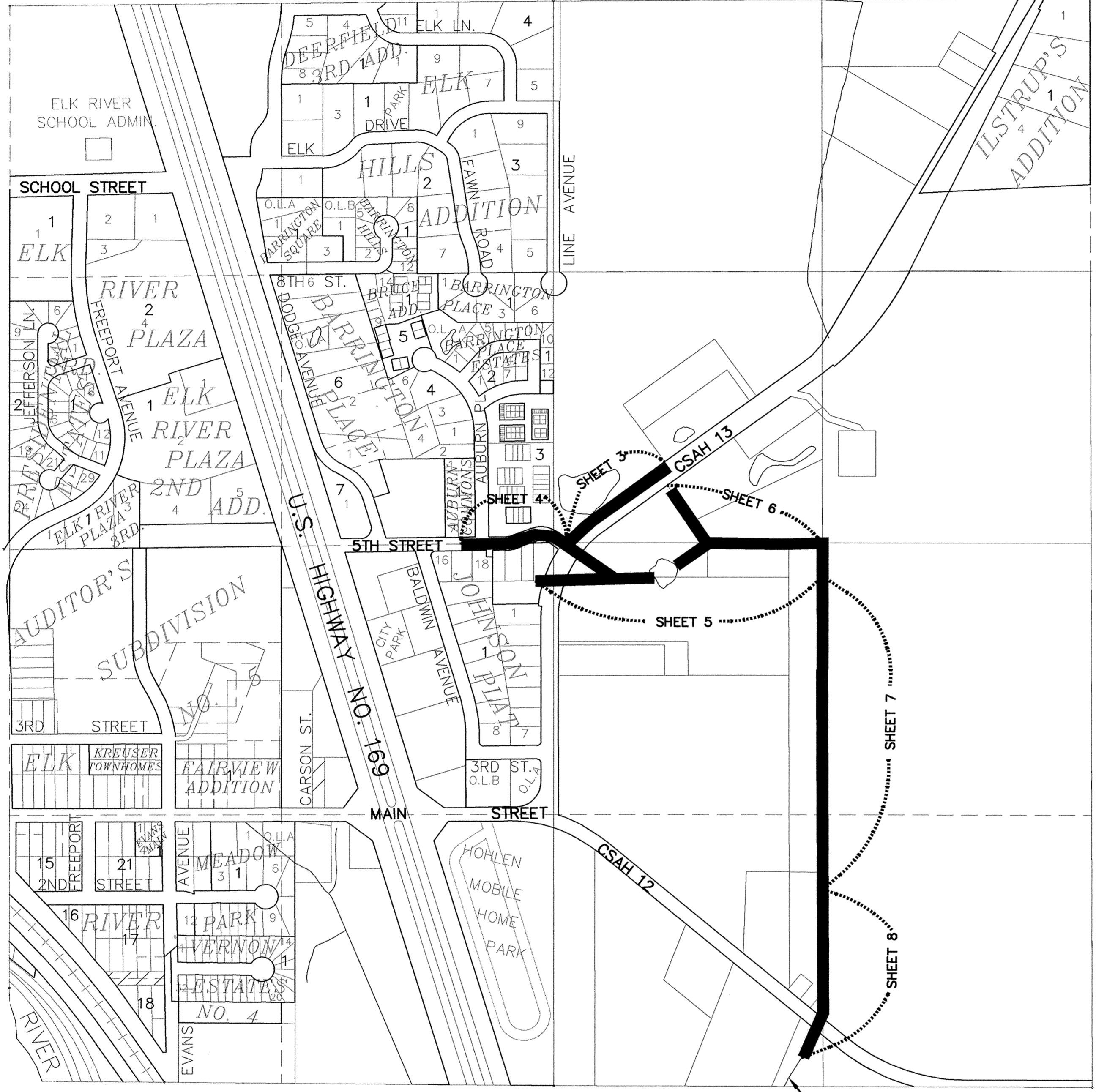
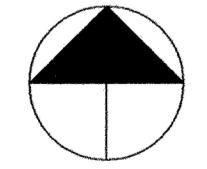


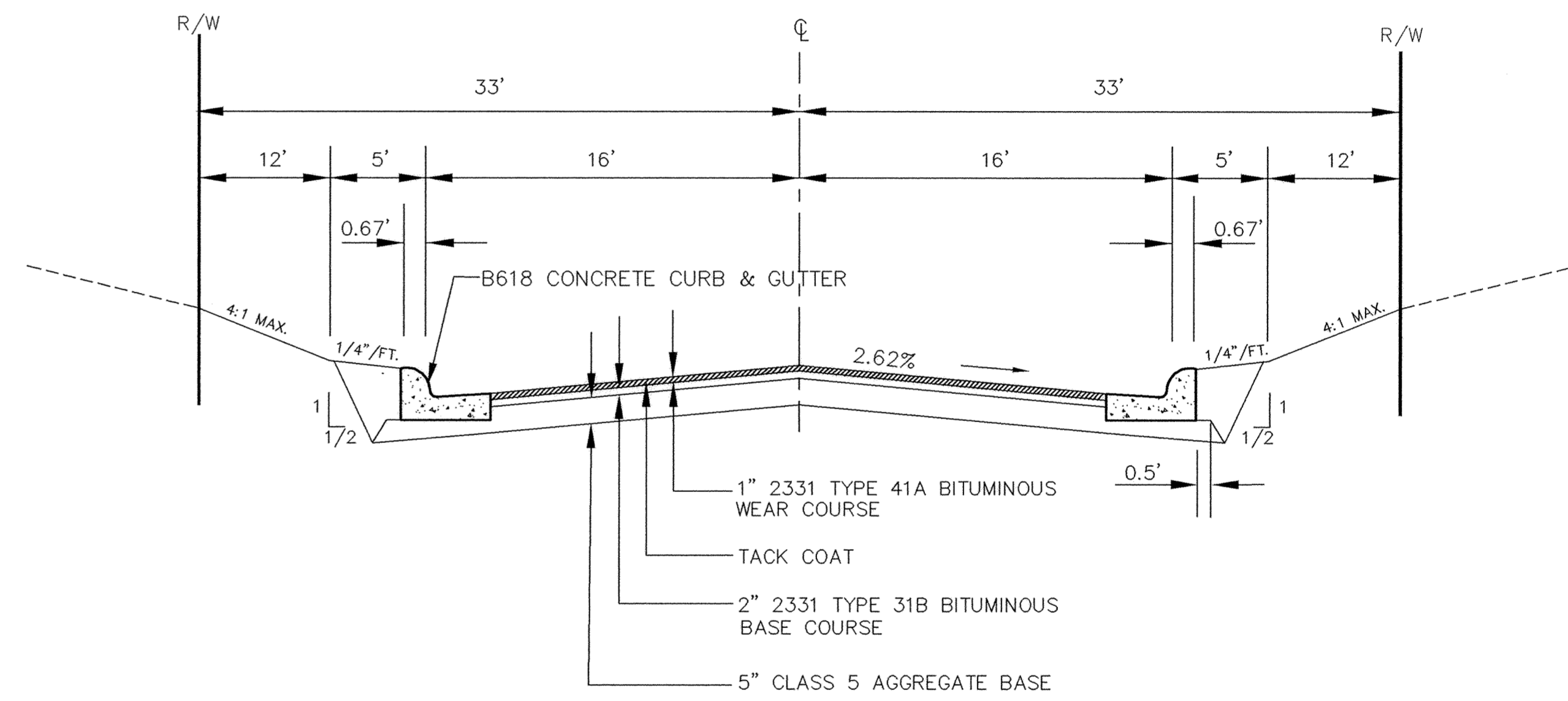
SAICO PRODUCTS • NEW HIRE, MINNESOTA
PROJECT BY PART NUMBER 652



COUNTY DITCH NO. 10
CROSS SECTIONS
SEE SHEET 9



LOCATION MAP AND SHEET INDEX



TYPICAL STREET SECTION
5TH STREET

RECORD PLAN
JANUARY 1996

I HEREBY CERTIFY THAT THIS PLAN, SPECIFICATION, OR REPORT WAS PREPARED BY ME OR UNDER MY DIRECT SUPERVISION AND THAT I AM A DULY REGISTERED PROFESSIONAL ENGINEER UNDER THE LAWS OF THE STATE OF MINNESOTA.

Kenneth J. Mann
DATE 5/12/94 REG. NO. 15316



1326 ENERGY PARK DRIVE
ST. PAUL, MINNESOTA 55108
(612) 644-4389

9800 SHELARD PARKWAY
MINNEAPOLIS, MINNESOTA 55441
(612) 546-0432

REVISIONS	DATE	DESCRIPTION	DESIGNED	CHKD.	DRAWN

CITY OF ELK RIVER LOCATION MAP AND TYPICAL SECTION		
DATE APR, 1994	SHEET 2 OF 11 SHEETS	PROJECT NO. 230-211