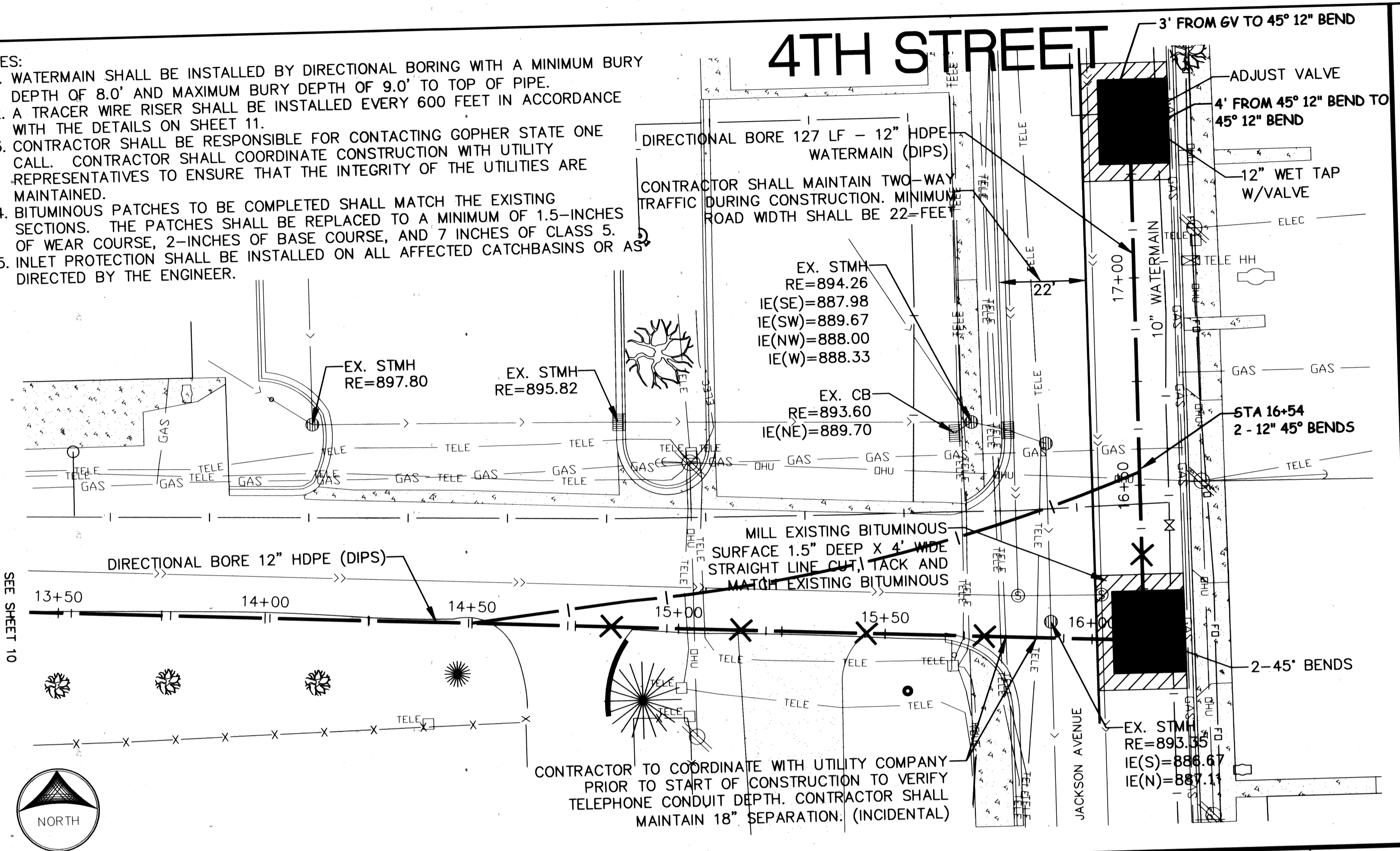
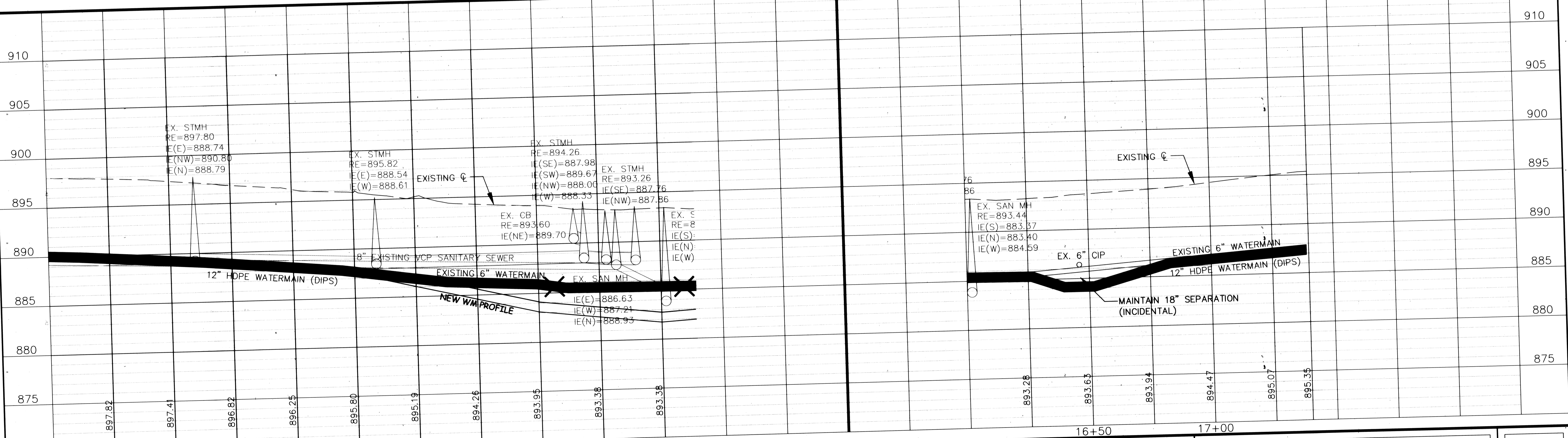
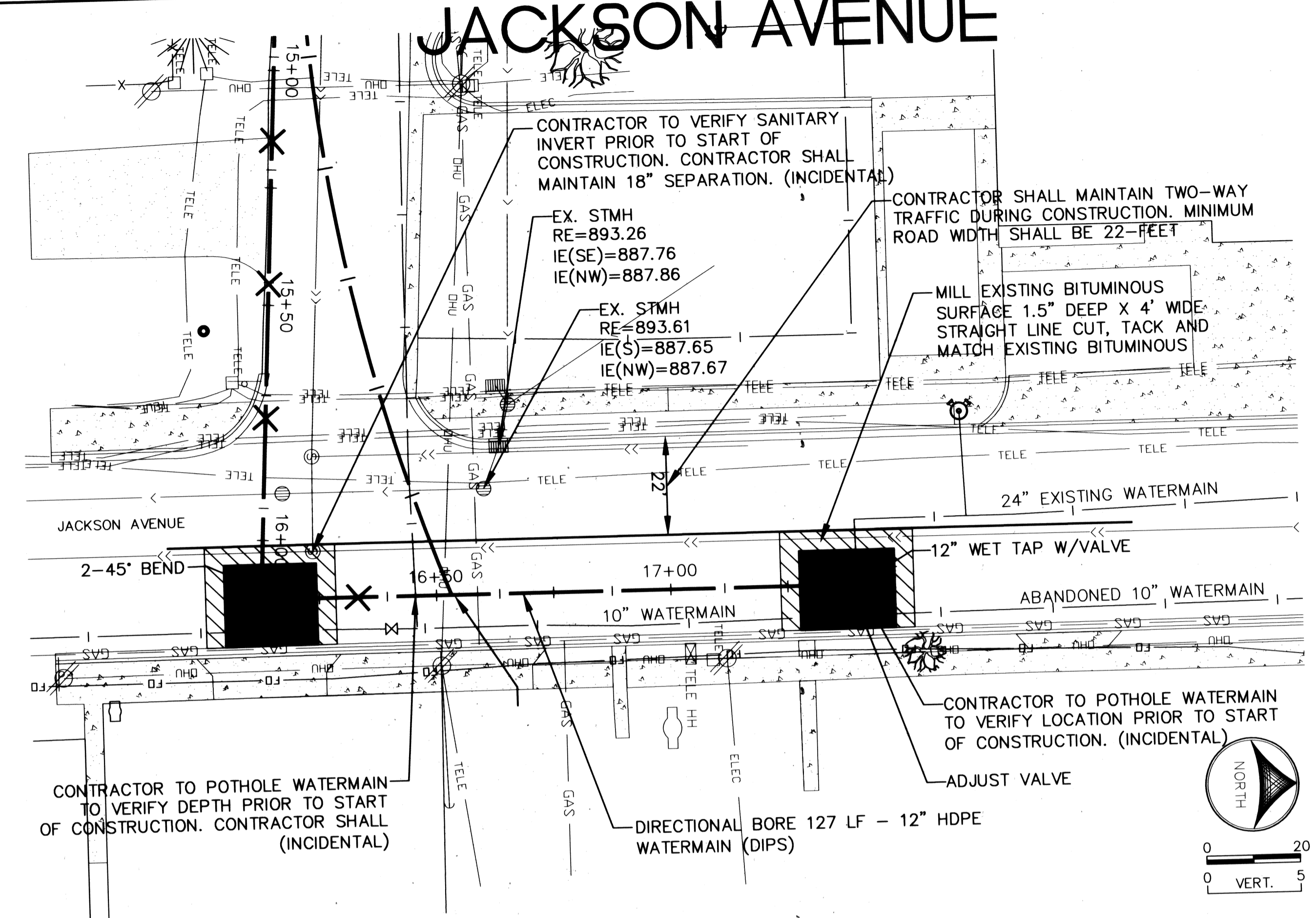


- NOTES:
1. WATERMAIN SHALL BE INSTALLED BY DIRECTIONAL BORING WITH A MINIMUM BURY DEPTH OF 8.0' AND MAXIMUM BURY DEPTH OF 9.0' TO TOP OF PIPE.
  2. A TRACER WIRE RISER SHALL BE INSTALLED EVERY 600 FEET IN ACCORDANCE WITH THE DETAILS ON SHEET 11.
  3. CONTRACTOR SHALL BE RESPONSIBLE FOR CONTACTING GOPHER STATE ONE CALL. CONTRACTOR SHALL COORDINATE CONSTRUCTION WITH UTILITY REPRESENTATIVES TO ENSURE THAT THE INTEGRITY OF THE UTILITIES ARE MAINTAINED.
  4. BITUMINOUS PATCHES TO BE COMPLETED SHALL MATCH THE EXISTING SECTIONS. THE PATCHES SHALL BE REPLACED TO A MINIMUM OF 1.5-INCHES OF WEAR COURSE, 2-INCHES OF BASE COURSE, AND 7 INCHES OF CLASS 5. INLET PROTECTION SHALL BE INSTALLED ON ALL AFFECTED CATCHBASINS OR AS DIRECTED BY THE ENGINEER.

# 4TH STREET



# JACKSON AVENUE



**CLEGG & ASSOCIATES**  
 10062 FLANDERS CT NE  
 BLAINE, MN 55449  
 PH: (763) 780-0450  
 FAX: (763) 780-0452

DESIGNED BY: KJE DRAWN BY: NAB  
 APPROVED BY: KJE JOB NUMBER: 235021E  
 CAD DATE: OCTOBER 9, 2007  
 CAD FILE: 235021E\4TH ST WM\DWG\PLAN.DWG

I HEREBY CERTIFY THAT THIS PLAN, SPECIFICATION, OR REPORT WAS PREPARED BY ME OR UNDER MY DIRECT SUPERVISION AND THAT I AM A DULY LICENSED PROFESSIONAL ENGINEER UNDER THE LAWS OF THE STATE OF MINNESOTA.

SIGNATURE: \_\_\_\_\_ DATE: \_\_\_\_\_  
 PRINTED NAME: KRISTIE J. ELFERING LIC. NO. 42350

NO.	DATE	BY	REVISION DESCRIPTION

**4TH STREET WATERMAIN IMPROVEMENTS**  
 ELK RIVER MUNICIPAL UTILITIES

**AS-BUILTS**  
 4TH STREET AND JACKSON AVENUE  
 PLAN AND PROFILE  
 13+50 TO 17+38

SHEET NO.  
**11**