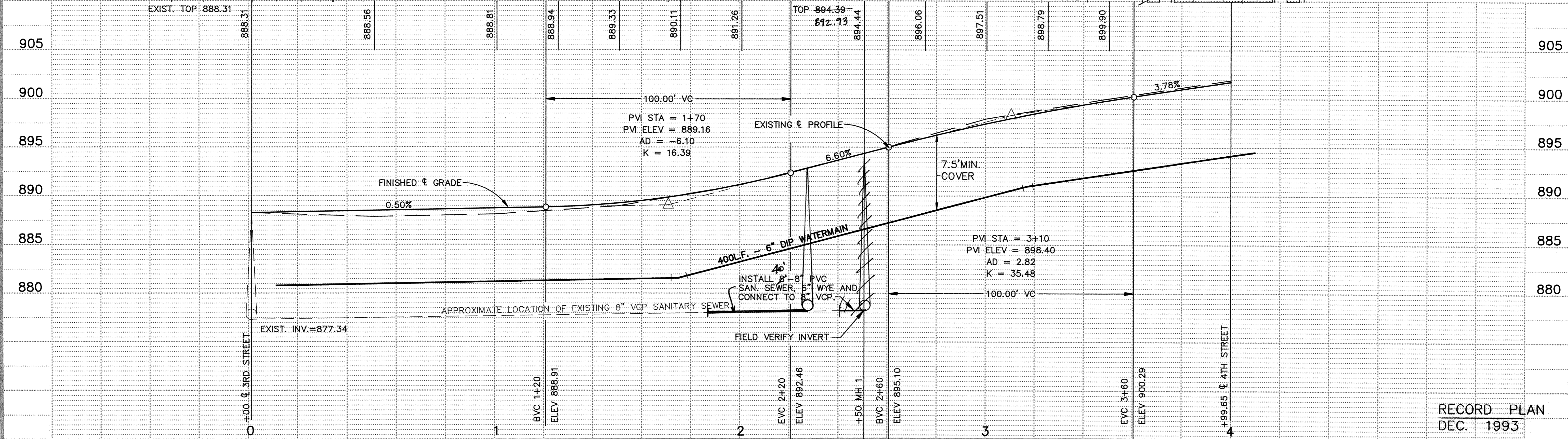
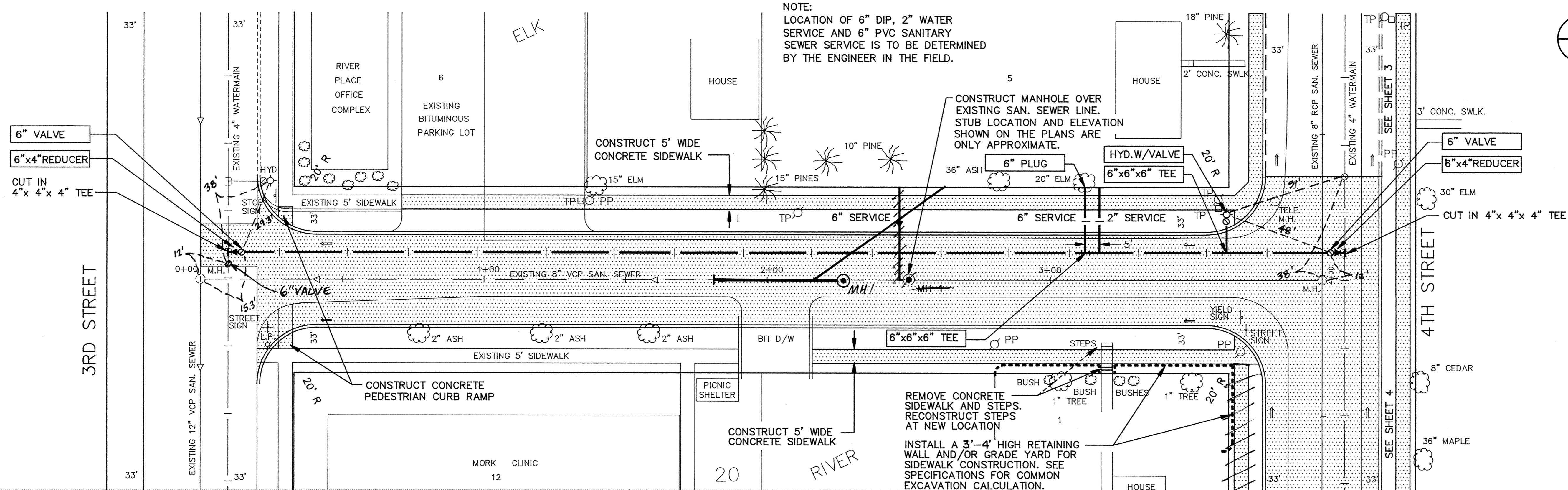


HOLT AVENUE

NOTE:
LOCATION OF 6" DIP, 2" WATER SERVICE AND 6" PVC SANITARY SEWER SERVICE IS TO BE DETERMINED BY THE ENGINEER IN THE FIELD.



RECORD PLAN
DEC. 1993

I HEREBY CERTIFY THAT THIS PLAN, SPECIFICATION, OR REPORT WAS PREPARED BY ME OR UNDER MY DIRECT SUPERVISION AND THAT I AM A DULY REGISTERED PROFESSIONAL ENGINEER UNDER THE LAWS OF THE STATE OF MINNESOTA.
Terry J. Maun
DATE 8/25/92 REG. NO. 15316

Maier Stewart & Associates Inc.
CONSULTING ENGINEERS
9800 SHELARD PARKWAY (612) 546-0432 MINNEAPOLIS, MINNESOTA 55441
1959 SLOAN PLACE (612) 774-6021 ST. PAUL, MINNESOTA 55117

DATE	DESCRIPTION	DESIGNED	CHECKED
		DRAWN	MRF
		GRAPHIC SCALE	
		HORIZ. 20	
		VERT. 5	

CITY OF ELK RIVER
SANITARY SEWER, WATERMAIN & STREET IMPROVEMENTS
HOLT AVENUE
STA. 0+00 TO 3+99.65
DATE AUG., 1992 SHEET 5 OF 10 SHEETS PROJECT NO. 230-146

DRAWING NUMBER 4STR 92 5
DRAWING NUMBER 653