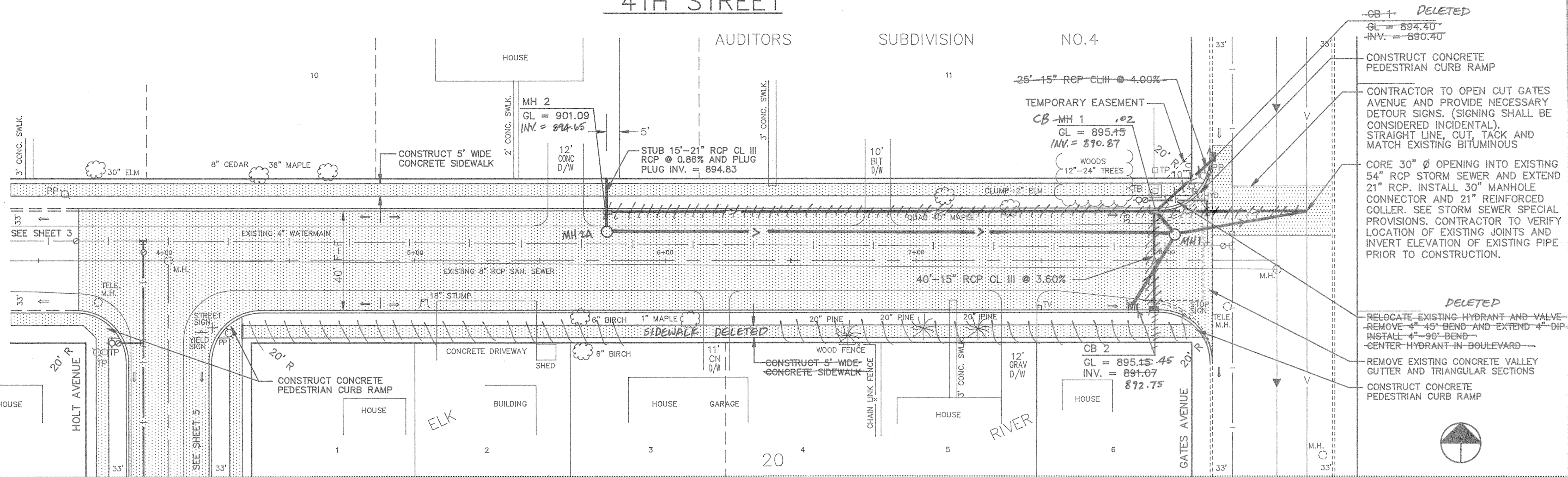
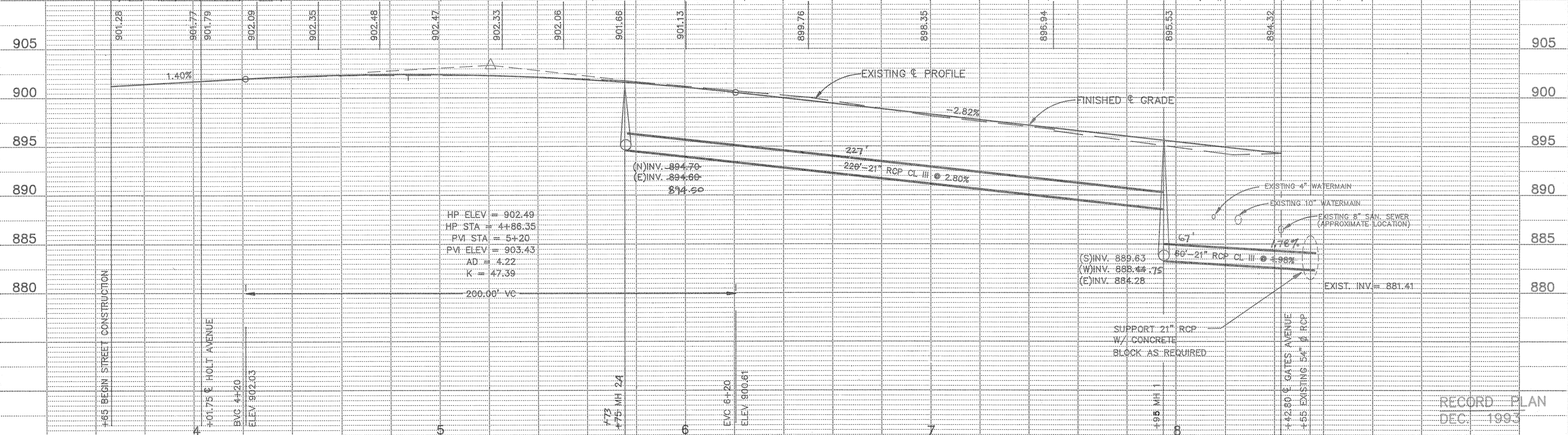


4TH STREET

AUDITORS SUBDIVISION NO. 4



- CB 1- DELETED
GL = 894.40
INV. = 890.40
- CONSTRUCT CONCRETE PEDESTRIAN CURB RAMP
- CONTRACTOR TO OPEN CUT GATES AVENUE AND PROVIDE NECESSARY DETOUR SIGNS. (SIGNING SHALL BE CONSIDERED INCIDENTAL). STRAIGHT LINE, CUT, TACK AND MATCH EXISTING BITUMINOUS
- CORE 30" Ø OPENING INTO EXISTING 54" RCP STORM SEWER AND EXTEND 21" RCP. INSTALL 30" MANHOLE CONNECTOR AND 21" REINFORCED COLLAR. SEE STORM SEWER SPECIAL PROVISIONS. CONTRACTOR TO VERIFY LOCATION OF EXISTING JOINTS AND INVERT ELEVATION OF EXISTING PIPE PRIOR TO CONSTRUCTION.
- RELOCATE EXISTING HYDRANT AND VALVE - REMOVE 4" 45° BEND AND EXTEND 4" DIP - INSTALL 4" 90° BEND - CENTER HYDRANT IN BOULEVARD
- REMOVE EXISTING CONCRETE VALLEY GUTTER AND TRIANGULAR SECTIONS
- CONSTRUCT CONCRETE PEDESTRIAN CURB RAMP



HP ELEV = 902.49
HP STA = 4+88.35
PVI STA = 5+20
PVI ELEV = 903.43
AD = 4.22
K = 47.39

I HEREBY CERTIFY THAT THIS PLAN SPECIFICATION OR REPORT WAS PREPARED BY ME OR UNDER MY DIRECT SUPERVISION AND THAT I AM A DULY REGISTERED PROFESSIONAL ENGINEER UNDER THE LAWS OF THE STATE OF MINNESOTA.
Terry J. Maurer
DATE 8/25/92 REG. NO. 15316

Maier Stewart & Associates Inc.
CONSULTING ENGINEERS
9800 SHELARD PARKWAY (612) 546-0432 MINNEAPOLIS, MINNESOTA 55441
1959 SLOAN PLACE (612) 774-6021 ST. PAUL, MINNESOTA 55117

DATE	DESCRIPTION	DESIGNED	CHECKED	DRAWN

GRAPHIC SCALE
0 HORIZ. 20'
0 VERT. 5'

CITY OF ELK RIVER
STORM SEWER & STREET IMPROVEMENTS
4TH STREET STA. 4+01.75 TO 8+42.80

DATE AUG., 1992 SHEET 4 OF 10 SHEETS PROJECT NO. 230-146

RECORD PLAN
DEC. 1992

DRAWING NUMBER 4STRE 92