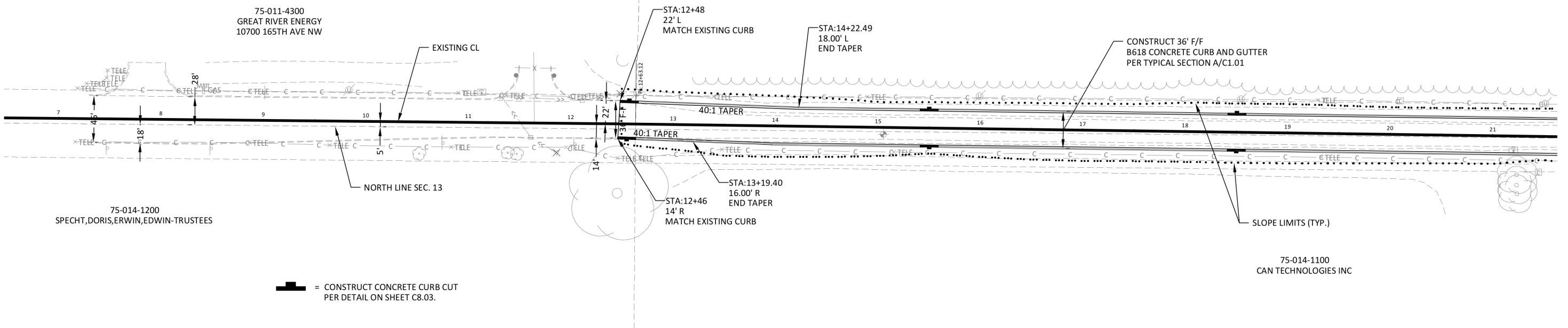




MATCH EXISTING BITUMINOUS SURFACE  
PER STANDARD PLATE 2006

75-011-4400  
CAN TECHNOLOGIES INC

75-011-4300  
GREAT RIVER ENERGY  
10700 165TH AVE NW

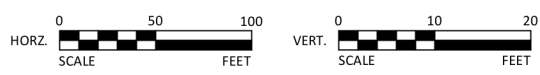
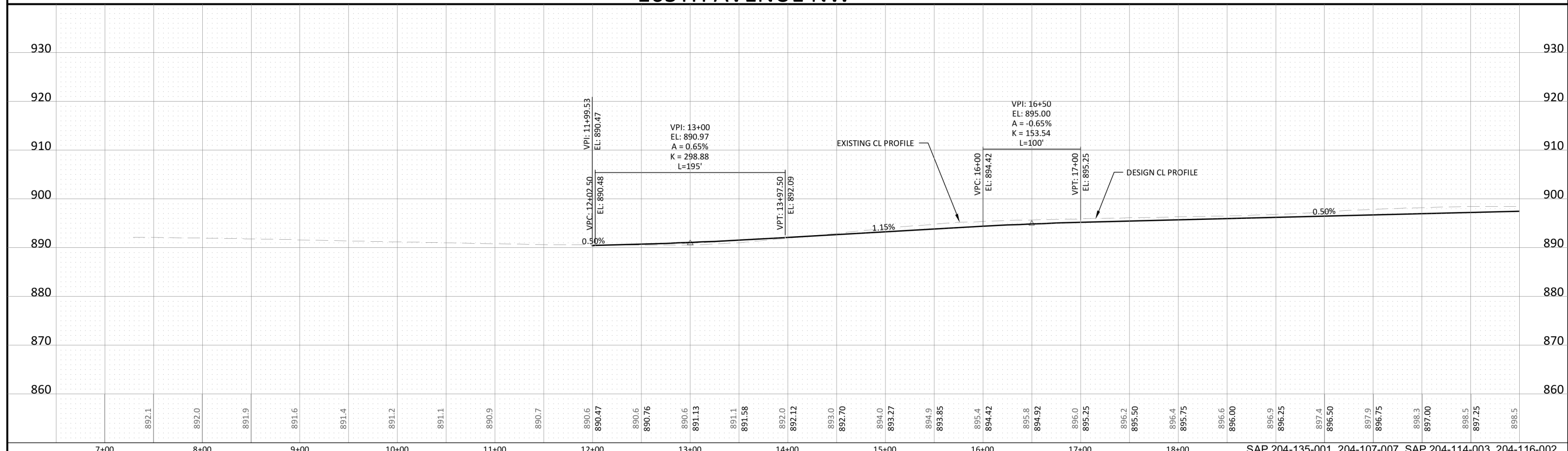


SEE SHEET C6.02

75-014-1200  
SPECHT, DORIS, ERWIN, EDWIN-TRUSTEES

75-014-1100  
CAN TECHNOLOGIES INC

# 165TH AVENUE NW



I HEREBY CERTIFY THAT THIS PLAN, SPECIFICATION, OR REPORT WAS PREPARED BY ME OR UNDER MY DIRECT SUPERVISION AND THAT I AM A DULY LICENSED PROFESSIONAL ENGINEER UNDER THE LAWS OF THE STATE OF MINNESOTA.  
*Cody L. Holmes*  
CODY L. HOLMES  
LIC. NO. 49143 DATE 1/30/2015

DESIGNED: CLH  
DRAWN: DJT  
CHECKED: KAZ  
**BOLTON & MENK, INC.**  
Consulting Engineers & Surveyors  
MANKATO, MN FAIRMONT, MN SLEEPY EYE, MN BURNSVILLE, MN WILLMAR, MN  
CHASKA, MN RAMSEY, MN MAPLEWOOD, MN BAXTER, MN ROCHESTER, MN  
AMES, IA SPENCER, IA DES MOINES, IA FARGO, ND

REV.	BY	DATE

ELK RIVER, MINNESOTA  
2015 STREET IMPROVEMENT PROJECT  
165TH AVENUE NW

SHEET  
**C6.01**