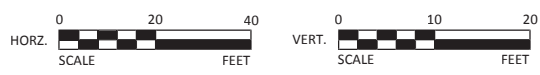
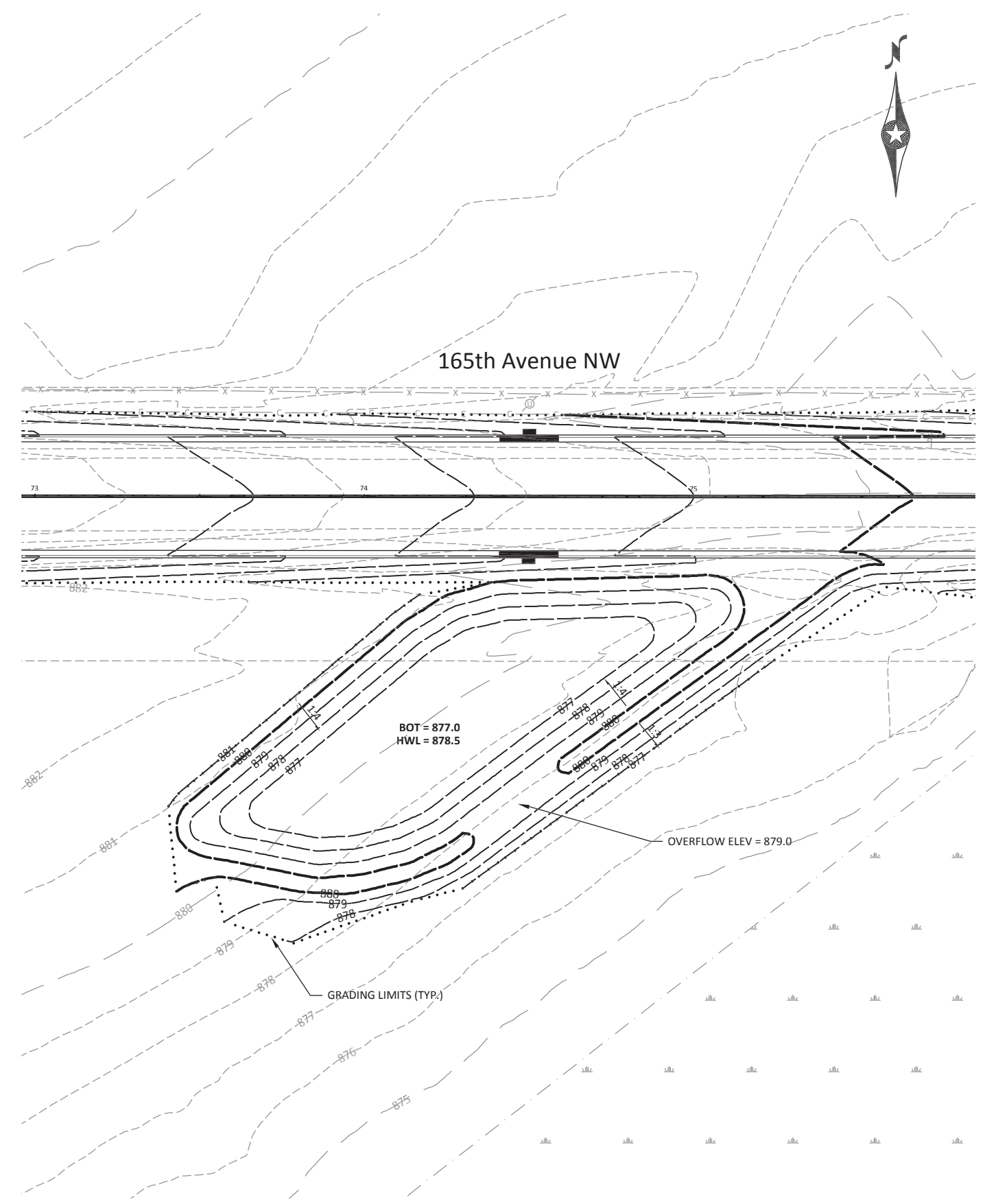
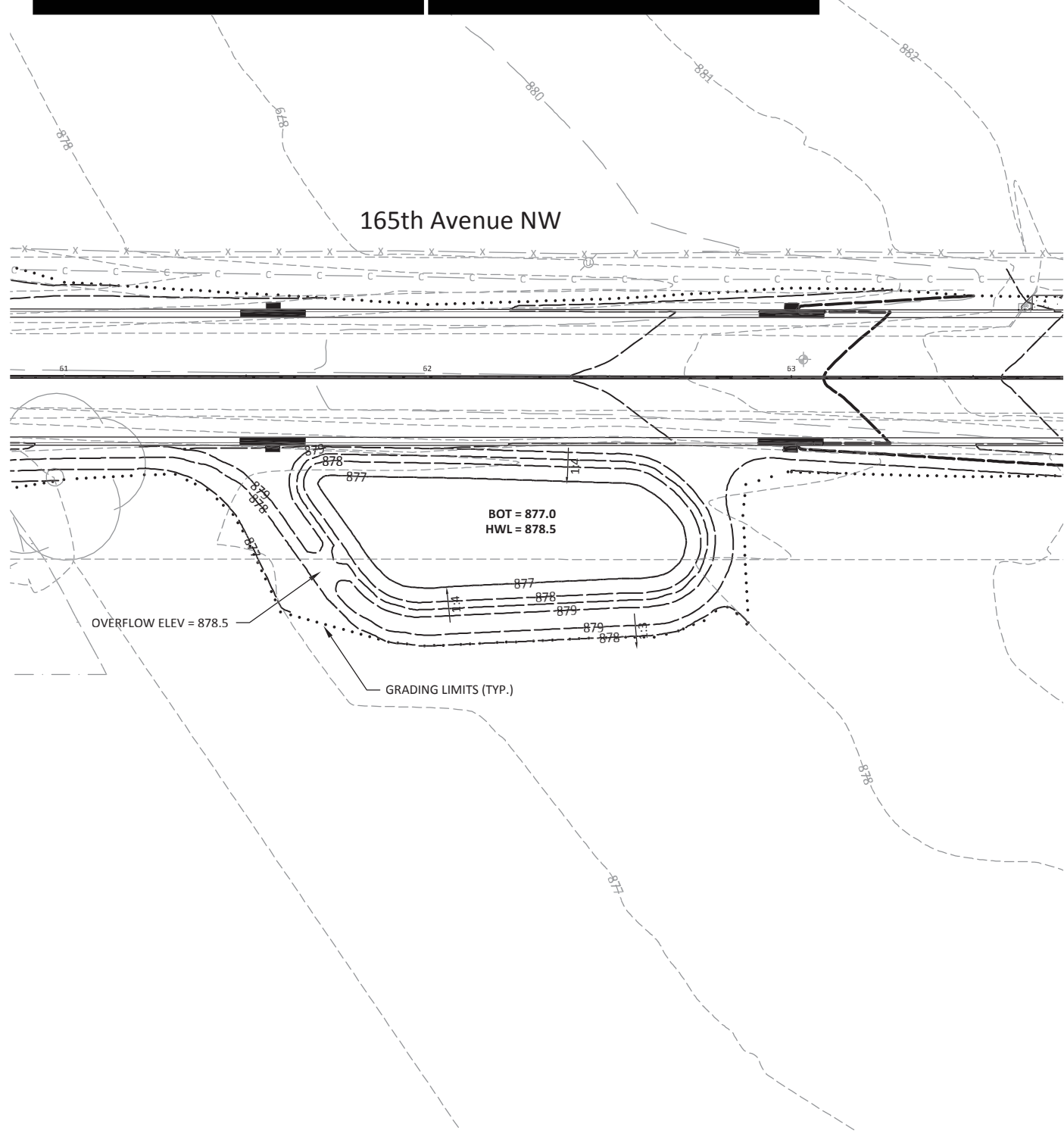


GENERAL NOTES:

1. ALL DISTURBED AREAS SHALL BE STABILIZED ACCORDING TO EROSION AND SEDIMENT CONTROL PLAN.
2. EXCAVATION IN INFILTRATION AREAS SHALL BE AVOIDED UNTIL DISTURBANCE IN THE CONTRIBUTING AREA HAS BEEN STABILIZED.
3. COMPACTION OF SOILS IN THE INFILTRATION SHALL BE MINIMIZED TO MAXIMUM EXTENT PRACTICABLE.
4. CONTRACTOR SHALL STAKE AND PROTECT AREA OF INFILTRATION DURING CONSTRUCTION TO PREVENT HEAVY EQUIPMENT AND TRAFFIC FROM ENTERING AREA.
5. ANY ACCUMULATED CONSTRUCTION SEDIMENT IN INFILTRATION AREA SHALL BE REMOVED FROM AREA PRIOR TO FINAL STABILIZATION.
6. SILT FENCE SHALL BE PLACED DOWN GRADIENT OF ALL CONSTRUCTION ACTIVITY.



I HEREBY CERTIFY THAT THIS PLAN, SPECIFICATION, OR REPORT WAS PREPARED BY ME OR UNDER MY DIRECT SUPERVISION AND THAT I AM A DULY LICENSED PROFESSIONAL ENGINEER UNDER THE LAWS OF THE STATE OF MINNESOTA.

CODY L. HOLMES
 LIC. NO. 49143 DATE 1/30/2015

BOLTON & MENK, INC.
 Consulting Engineers & Surveyors
 MANKATO, MN FAIRMONT, MN SLEEPY EYE, MN BURNSVILLE, MN WILLMAR, MN
 CHASKA, MN RAMSEY, MN MAPLEWOOD, MN BAXTER, MN ROCHESTER, MN
 AMES, IA SPENCER, IA DES MOINES, IA FARGO, ND

REV.	BY	DATE

SAP 204-135-001, 204-107-007, SAP 204-114-003, 204-116-002

ELK RIVER, MINNESOTA
 2015 STREET IMPROVEMENT PROJECT

POND GRADING PLAN

SHEET
C3.01