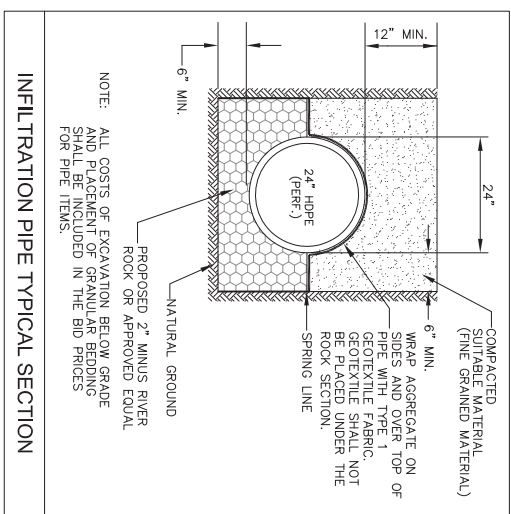
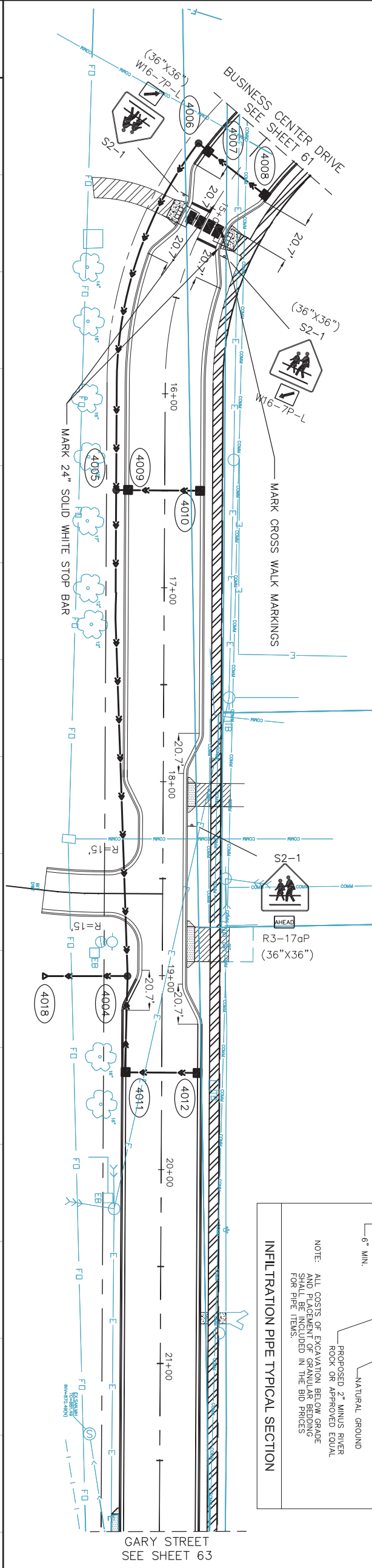


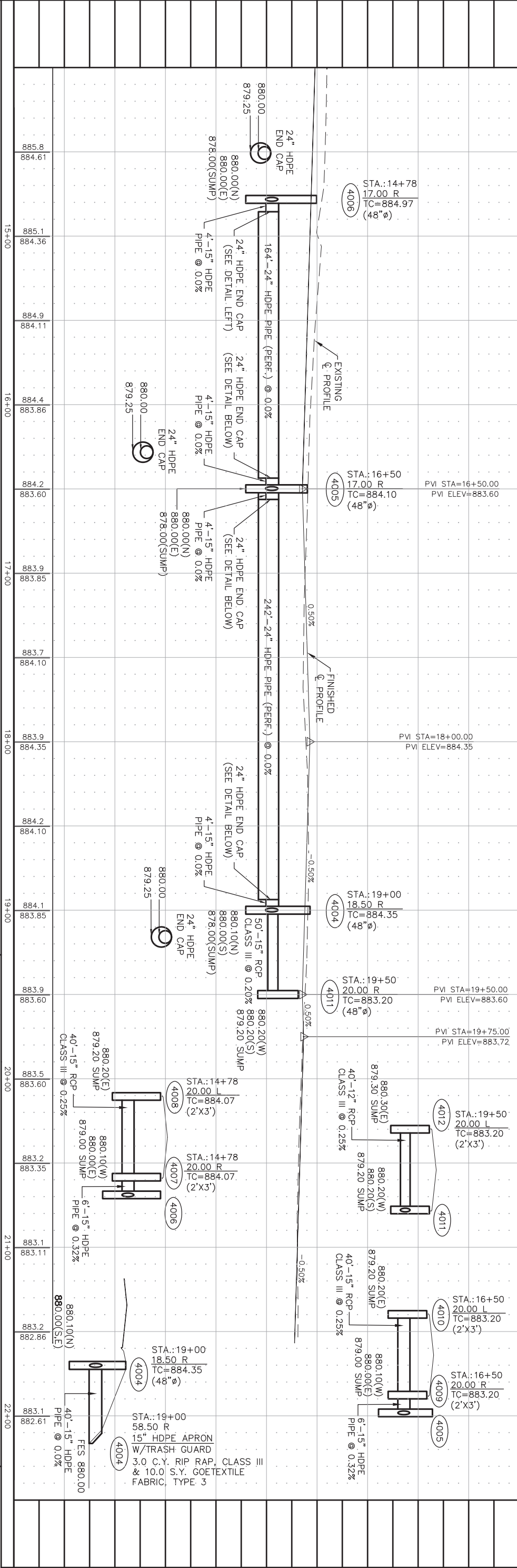
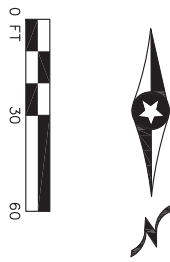
# GARY STREET

- NOTES:
1. ALL MAILBOXES DISTURBED WITH CONSTRUCTION SHALL BE SALVAGED AND REINSTALLED
  2. ALL DRIVEWAYS SHALL BE SAWCUT, REMOVED AND REPLACED TO A DISTANCE NO LESS THAN 5' FROM THE BACK OF CURB OR AS DIRECTED BY THE ENGINEER.
  3. ALL UTILITY CROSSINGS NOT SPECIFIED FOR REMOVAL SHALL BE SUPPORTED DURING CONSTRUCTION AT NO ADDITIONAL COMPENSATION.

- NEW CONCRETE DRIVEWAY
- NEW BITUMINOUS DRIVEWAY
- NEW BITUMINOUS TRAIL
- NEW CONCRETE APRON
- NEW CONCRETE WALK



- 1 MATCH EXISTING BITUMINOUS SURFACING PER ER-ST-2006
- 2 ADJUST VALVE BOX
- 3 ADJUST CASTING (STORM)
- 4 ADJUST FRAME AND RING CASTING (SANITARY) AND CHIMNEY SEAL
- 5 FURNISH AND INSTALL NEW CASTING
- 6 RECONSTRUCT MANHOLE
- 7 EXCAVATE TO LOCATE SANITARY SEWER SERVICE



15+00 16+00 17+00 18+00 19+00 20+00 21+00 22+00

885.8 884.61 885.1 884.36 884.9 884.11 884.4 883.86 884.2 883.60 883.9 883.85 883.7 884.10 883.9 884.35 884.2 884.10 884.1 883.85 883.9 883.60 883.5 883.60 883.2 883.35 883.1 883.11 883.2 882.86 883.1 882.61

STREET AND UTILITY PLAN  
GARY STREET

WSB PROJECT NUMBER 1992-01

SHEET 62 OF 110 SHEETS



## 2013 STREET IMPROVEMENT PROJECT

### ELK RIVER, MINNESOTA

I HEREBY CERTIFY THAT THIS PLAN, SPECIFICATION, OR REPORT WAS PREPARED BY ME OR UNDER MY DIRECT SUPERVISION AND THAT I AM A DULY LICENSED PROFESSIONAL ENGINEER UNDER THE LAWS OF THE STATE OF MINNESOTA.

*Jason C. Weidel*  
JASON C. WEIDEL, P.E.

DATE: MARCH 4, 2013 LIC. NO.: 26768

SCALE:	AS NOTED	REVISION NO. DATE	EXPLANATION
PLAN BY:	ECY	DESIGN BY:	ECY
CHECKED BY:	JCW	PROJECT NO.:	1992-010
RECORD COPY BY:		DATE:	