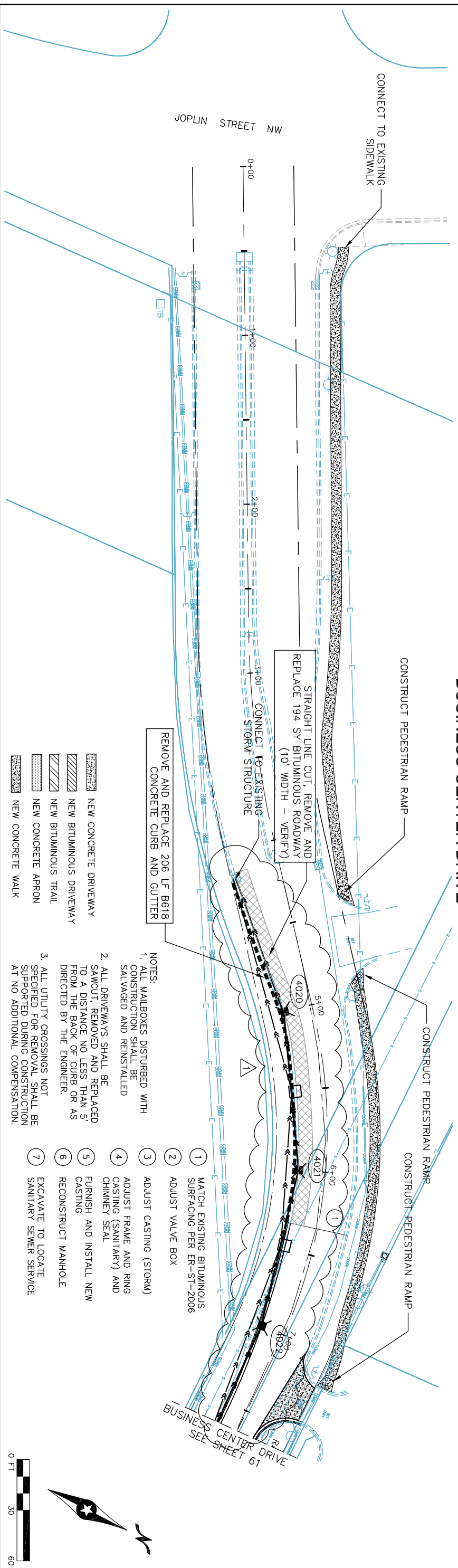


BUSINESS CENTER DRIVE



- NEW CONCRETE DRIVEWAY
- NEW BITUMINOUS DRIVEWAY
- NEW BITUMINOUS TRAIL
- NEW CONCRETE APRON
- NEW CONCRETE WALK

- NOTES:**
- ALL MAILBOXES DISTURBED WITH CONSTRUCTION SHALL BE SALVAGED AND REINSTALLED
 - ALL DRIVEWAYS SHALL BE SAWCUT, REMOVED AND REPLACED TO A DISTANCE NO LESS THAN 5' FROM THE BACK OF CURB OR AS DIRECTED BY THE ENGINEER.
 - ALL UTILITY CROSSINGS NOT SPECIFIED FOR REMOVAL SHALL BE SUPPORTED DURING CONSTRUCTION AT NO ADDITIONAL COMPENSATION.
 - MATCH EXISTING BITUMINOUS SURFACING PER ER-ST-2006
 - ADJUST VALVE BOX
 - ADJUST CASTING (STORM)
 - ADJUST FRAME AND RING CASTING (SANITARY) AND CHIMNEY SEAL
 - FURNISH AND INSTALL NEW CASTING
 - RECONSTRUCT MANHOLE
 - EXCAVATE TO LOCATE SANITARY SEWER SERVICE

900																					
895																					
890																					
885																					
880																					
875																					
870																					
865																					
860																					

RECORD DRAWING
 INFORMATION IS FURNISHED WITHOUT WARRANTY AS TO ACCURACY. USERS SHOULD FIELD VERIFY LOCATIONS AND ELEVATIONS.
 THIS DRAWING IS OUR RECORD KNOWLEDGE OF THE PROJECT AS CONSTRUCTED.
 JAMES WEDEL, P.E. - PROJECT ENGINEER
 WS&A ASSOCIATES
 JAMES KLEIN - CONSTRUCTION OBSERVER
 WS&A ASSOCIATES
 DECEMBER 2013

