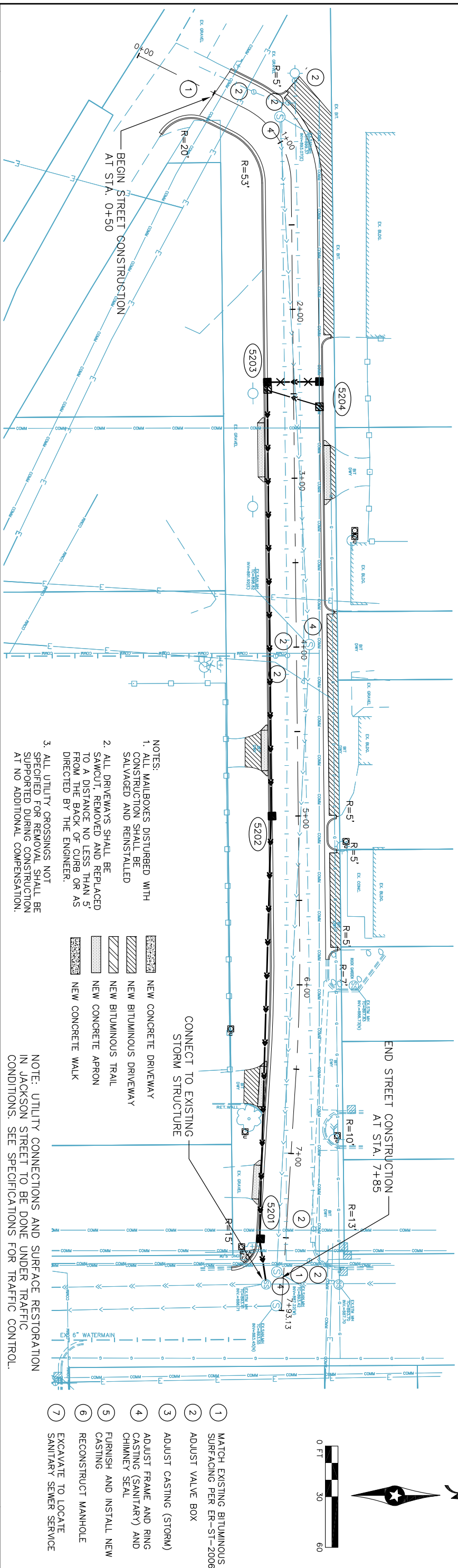


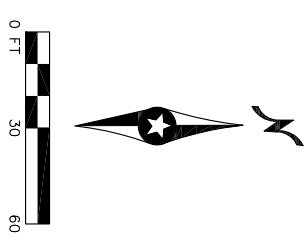
4TH STREET NW



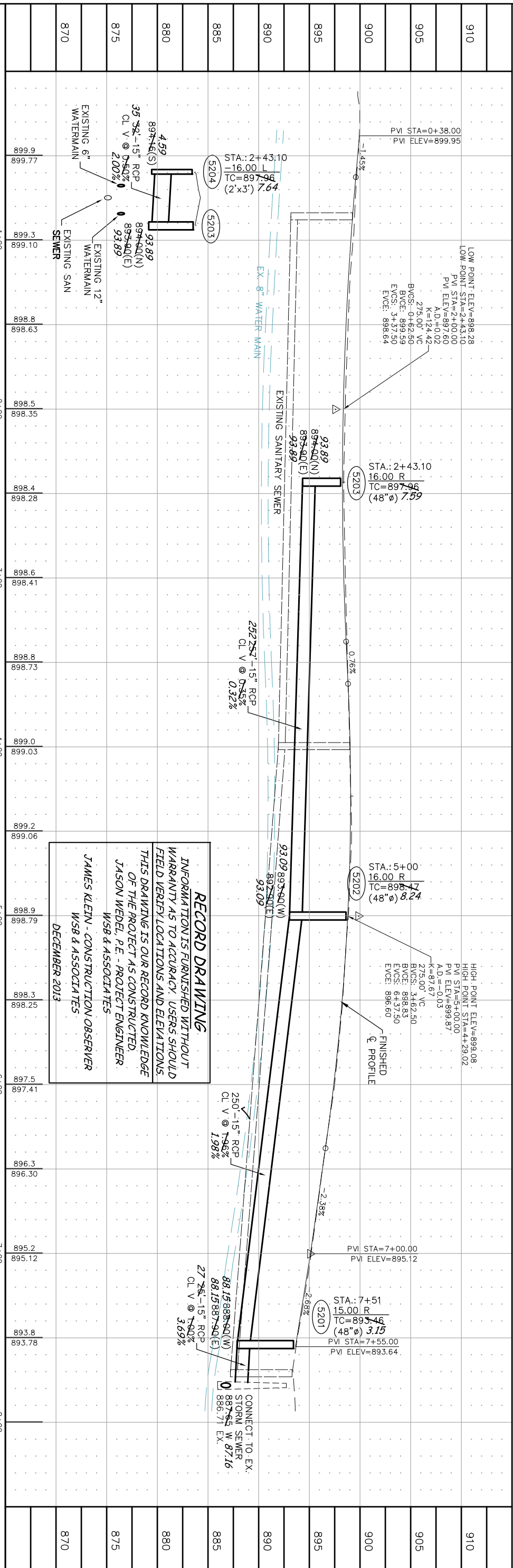
- NOTES:
1. ALL MANHOLES DISTURBED WITH CONSTRUCTION SHALL BE SALVAGED AND REINSTALLED
 2. ALL DRIVEWAYS SHALL BE SAWCUT, REMOVED AND REPLACED TO A DISTANCE NO LESS THAN 5' FROM THE BACK OF CURB OR AS DIRECTED BY THE ENGINEER.
 3. ALL UTILITY CROSSINGS NOT SPECIFIED FOR REMOVAL SHALL BE SUPPORTED DURING CONSTRUCTION AT NO ADDITIONAL COMPENSATION.

- NEW CONCRETE DRIVEWAY
- NEW BITUMINOUS DRIVEWAY
- NEW BITUMINOUS TRAIL
- NEW CONCRETE APRON
- NEW CONCRETE WALK

NOTE: UTILITY CONNECTIONS AND SURFACE RESTORATION IN JACKSON STREET TO BE DONE UNDER TRAFFIC CONDITIONS. SEE SPECIFICATIONS FOR TRAFFIC CONTROL.



- 1 MATCH EXISTING BITUMINOUS SURFACING PER ER-ST-2006
- 2 ADJUST VALVE BOX
- 3 ADJUST CASTING (STORM)
- 4 ADJUST FRAME AND RING CASTING (SANITARY) AND CHIMNEY SEAL
- 5 FURNISH AND INSTALL NEW CASTING
- 6 RECONSTRUCT MANHOLE
- 7 EXCAVATE TO LOCATE SANITARY SEWER SERVICE



RECORD DRAWING
 INFORMATION IS FURNISHED WITHOUT WARRANTY AS TO ACCURACY. USERS SHOULD FIELD VERIFY LOCATIONS AND ELEVATIONS. THIS DRAWING IS OUR RECORD KNOWLEDGE OF THE PROJECT AS CONSTRUCTED.
 JASON WEDEL, P.E. - PROJECT ENGINEER
 WSB & ASSOCIATES
 JAMES KLEIN - CONSTRUCTION OBSERVER
 WSB & ASSOCIATES
 DECEMBER 2013

910	899.9	899.77	899.3	899.10	898.8	898.63	898.5	898.35	898.4	898.28	898.6	898.41	898.8	898.73	899.0	899.03	899.2	899.06	898.9	898.79	898.3	898.25	897.5	897.41	896.3	896.30	895.2	895.12	893.8	893.78
-----	-------	--------	-------	--------	-------	--------	-------	--------	-------	--------	-------	--------	-------	--------	-------	--------	-------	--------	-------	--------	-------	--------	-------	--------	-------	--------	-------	--------	-------	--------

<p>701 Xenia Avenue South, Suite 300 Minneapolis, MN 55416 Tel: (763) 541-4800 • Fax: (763) 541-1700 wsbenq.com</p>	<p>2013 STREET IMPROVEMENT PROJECT</p> <p>ELK RIVER, MINNESOTA</p>	I HEREBY CERTIFY THAT THIS PLAN, SPECIFICATION, OR REPORT WAS PREPARED BY ME OR UNDER MY DIRECT SUPERVISION AND THAT I AM A DULY LICENSED PROFESSIONAL ENGINEER UNDER THE LAWS OF THE STATE OF MINNESOTA. JASON C. WEDEL, P.E. DATE: MARCH 4, 2013 LIC. NO.: 26768	SCALE: AS NOTED PLAN BY: ECY CHECKED BY: JCW RECORD COPY BY:	DESIGN BY: ECY PROJECT NO.: 1992-010 DATE:	REVISION NO. DATE EXPLANATION
		CONTRACTOR: STREET AND UTILITY PLAN HARDRIVES INC. 4TH STREET NW * RECORD DRAWING 2013 * SHEET 59 OF 110 SHEETS	engineering • planning • environmental • construction		