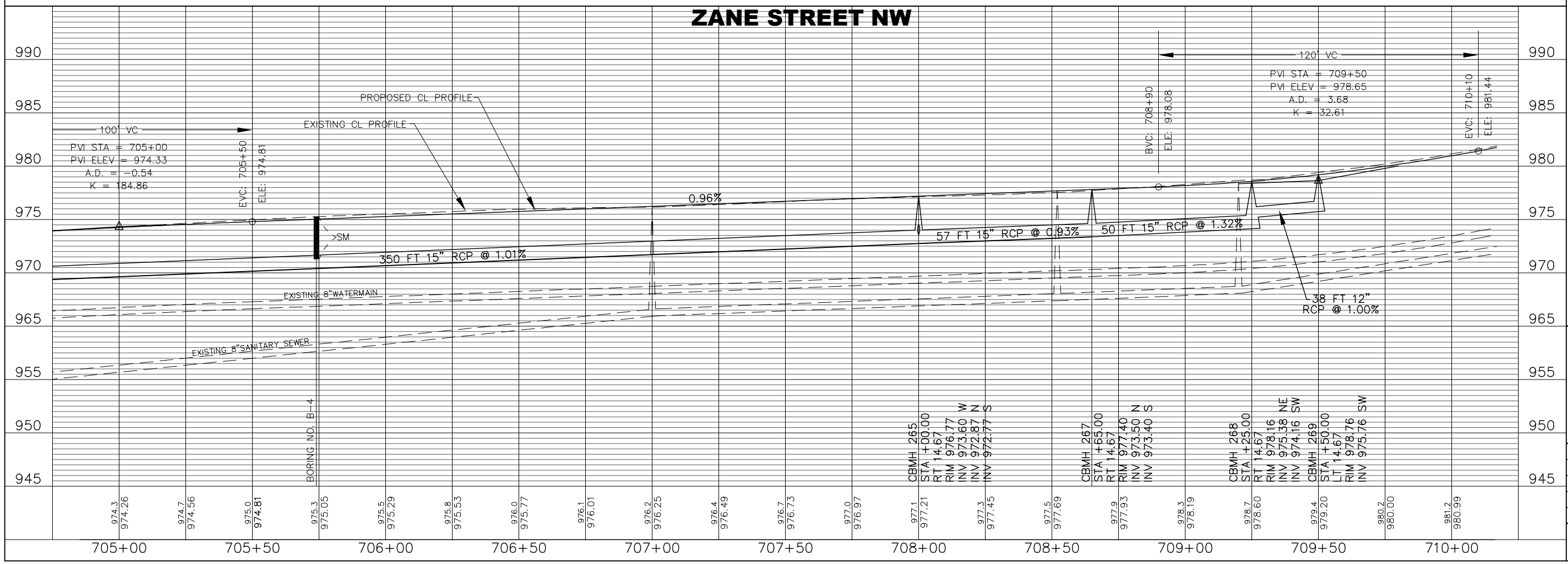
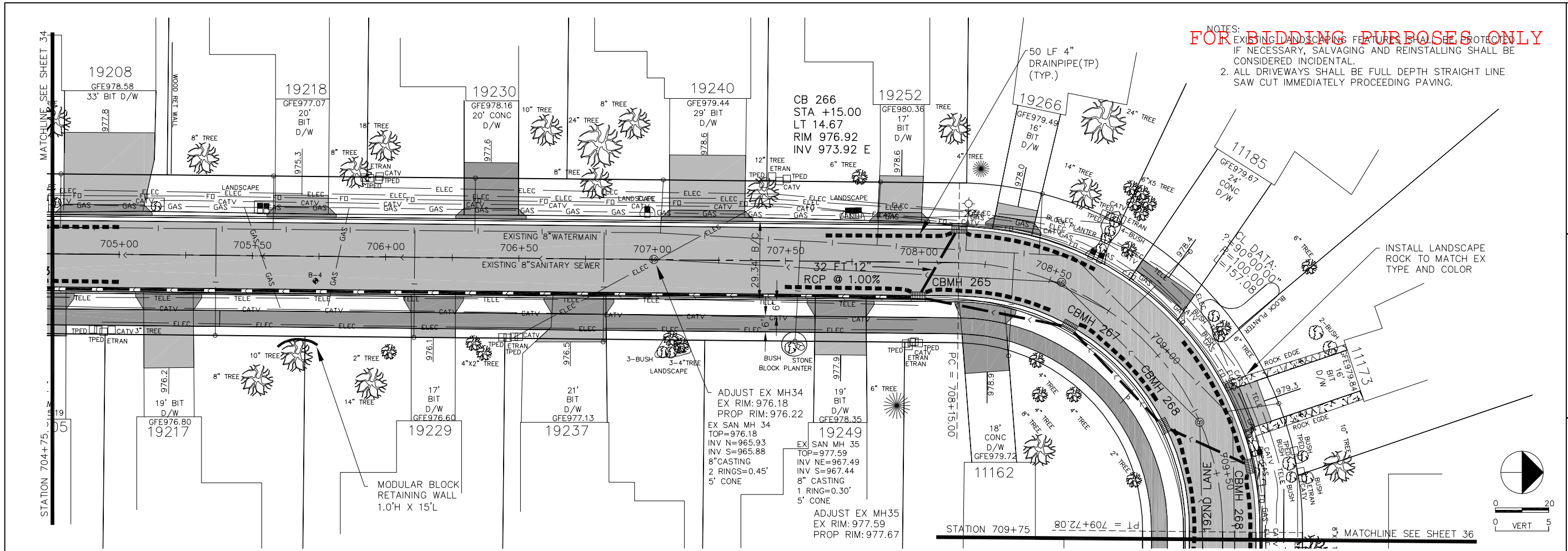


NOTES:
FOR BIDDING PURPOSES ONLY
 1. EXISTING LANDSCAPE FEATURES SHALL BE PROTECTED. IF NECESSARY, SALVAGING AND REINSTALLING SHALL BE CONSIDERED INCIDENTAL.
 2. ALL DRIVEWAYS SHALL BE FULL DEPTH STRAIGHT LINE SAW CUT IMMEDIATELY PROCEEDING PAVING.



REVISIONS	NO. DATE	BY	DESCRIPTION	
I HEREBY CERTIFY THAT THIS PLAN, SPECIFICATION, OR REPORT WAS PREPARED AND DRAWN UNDER MY DIRECT SUPERVISION AND THAT I AM A LICENSED PROFESSIONAL ENGINEER UNDER THE LAWS OF THE STATE OF MINNESOTA. Print Name: JOHN M. ANDERSON Signature:				
Date: 02-26-07 License # 25889				
CITY OF ELK RIVER 2007 STREET IMPROVEMENTS DEERFIELD 3RD PLAN AND PROFILE ZANE STREET NW				
 BDM Consulting Engineers and Surveyors, PLC 11040 183rd Cir. NW, Suite A Elk River, MN 55330 Phone: (763) 441-0877 Fax: (763) 441-1090 bdmce.com				
DRAWN BY: JBK				
CHECKED BY: JMA				
DESIGNED BY: JMA				
JOB NO. 226152				
SHEET	SHEETS			
35	124			