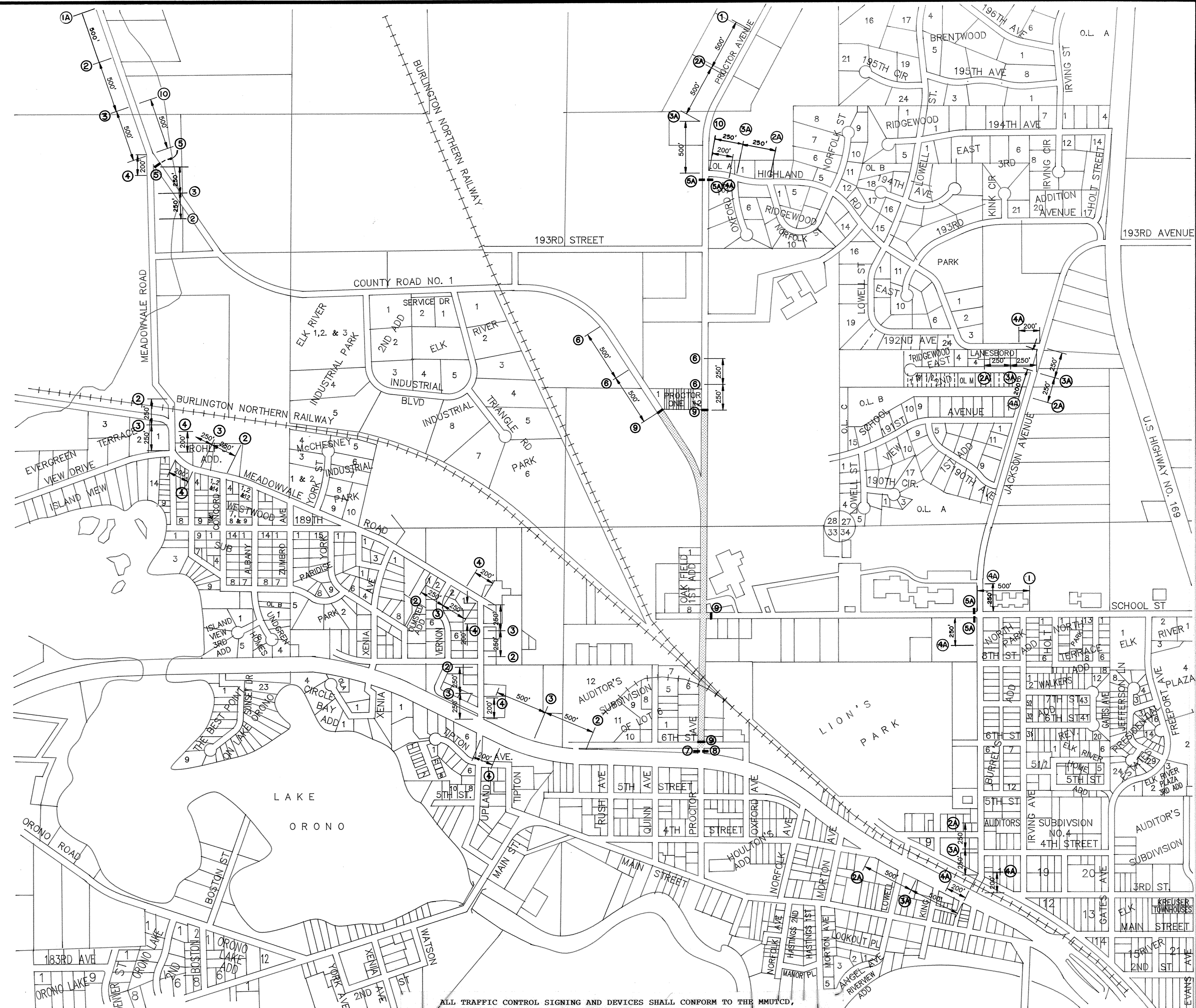
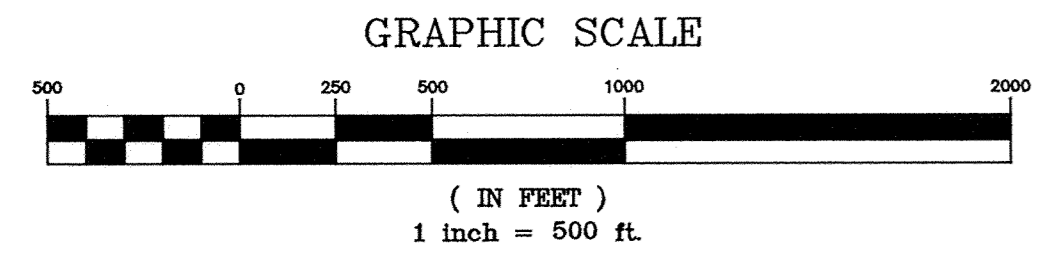


LEGEND

MESSAGE	SIGN NO.	SIZE	COLOR
CONSTRUCTION ZONE			
TYPE III BARRICADE			
ROAD CONSTRUCTION AHEAD	W20-1	48"x48"	BLACK ON ORANGE
DETOUR 750 FT.	W20-2	48"x48"	BLACK ON ORANGE
DETOUR SOUTH(NORTH) SHERBURNE COUNTY	M4-8 M3-1(M3-3)	24"x12" 24"x12"	BLACK ON ORANGE BLACK ON WHITE
ADVANCE TURN ARROW	M5-1(L or R)	21"x15"	BLACK ON WHITE
DETOUR NORTH(SOUTH) PROCTOR AVE. ADVANCE TURN ARROW	M4-8 M3-1(M3-3) D3	24"x12" 24"x12" 24"x12"	BLACK ON ORANGE BLACK ON WHITE BLACK ON ORANGE
DETOUR SOUTH(NORTH) SHERBURNE COUNTY	M4-8 M3-1(M3-3)	24"x12" 24"x12"	BLACK ON ORANGE BLACK ON WHITE
DIRECTIONAL ARROW	M6-1	21"x15"	BLACK ON WHITE
DETOUR NORTH(SOUTH) PROCTOR AVE. DIRECTIONAL ARROW	M4-8 M3-1(M3-3) D3	24"x12" 24"x12" 24"x12"	BLACK ON ORANGE BLACK ON WHITE BLACK ON ORANGE
DETOUR SOUTH(NORTH) SHERBURNE COUNTY	M4-8 M3-1(M3-3)	24"x12" 24"x12"	BLACK ON ORANGE BLACK ON WHITE
ROAD CLOSED - MILES AHEAD LOCAL TRAFFIC ONLY	R11-3	60"x30"	BLACK ON WHITE
DETOUR ARROW	M4-10	48"x18"	BLACK ON ORANGE
ROAD CLOSED - MILES AHEAD LOCAL TRAFFIC ONLY	R11-3	60"x30"	BLACK ON WHITE
DETOUR ARROW NORTH(SOUTH) PROCTOR AVE.	M4-10 M3-1(M3-3) D3	48"x18" 24"x12" 24"x12"	BLACK ON ORANGE BLACK ON WHITE BLACK ON ORANGE
ROAD CLOSED - FT	W20-3	48"x48"	BLACK ON ORANGE
ROAD CLOSED	R11-2	48"x30"	BLACK ON WHITE
DETOUR ARROW NORTH(SOUTH) SHERBURNE COUNTY	M4-10 M3-1(M3-3) M1-6	48"x18" 24"x12" 24"x24"	BLACK ON ORANGE BLACK ON WHITE BLACK ON WHITE
ROAD CLOSED	R11-2	48"x30"	BLACK ON WHITE
DETOUR ARROW NORTH(SOUTH) PROCTOR AVE.	M4-10 M3-1(M3-3) D3	48"x18" 24"x12" 24"x12"	BLACK ON ORANGE BLACK ON WHITE BLACK ON ORANGE
ROAD CLOSED	R11-2	48"x30"	BLACK ON WHITE
END CONSTRUCTION	G20-2	60"x24"	BLACK ON ORANGE



ALL TRAFFIC CONTROL SIGNING AND DEVICES SHALL CONFORM TO THE MUTCD, INCLUDING APPENDIX B DATED MARCH 1990

I HEREBY CERTIFY THAT THIS PLAN, SPECIFICATION, OR REPORT WAS PREPARED BY ME OR UNDER MY DIRECT SUPERVISION AND THAT I AM A DULY REGISTERED PROFESSIONAL ENGINEER UNDER THE LAWS OF THE STATE OF MINNESOTA.
DATE _____ REG. NO. _____

Maier Stewart & Associates Inc.
CONSULTING ENGINEERS
9800 SHELARD PARKWAY (612) 546-0432 MINNEAPOLIS, MINNESOTA 55441
1959 SLOAN PLACE (612) 774-6021 ST. PAUL, MINNESOTA 55117

DATE	DESCRIPTION	DESIGNED	VGH

SHERBURNE COUNTY
DETOUR ROUTING & SIGNING PLAN
C.S.A.H. NO. 1
S.A.P. 71-601-13

DATE MAR. 1991 SHEET 24 OF 28 SHEETS PROJECT NO. 231-001