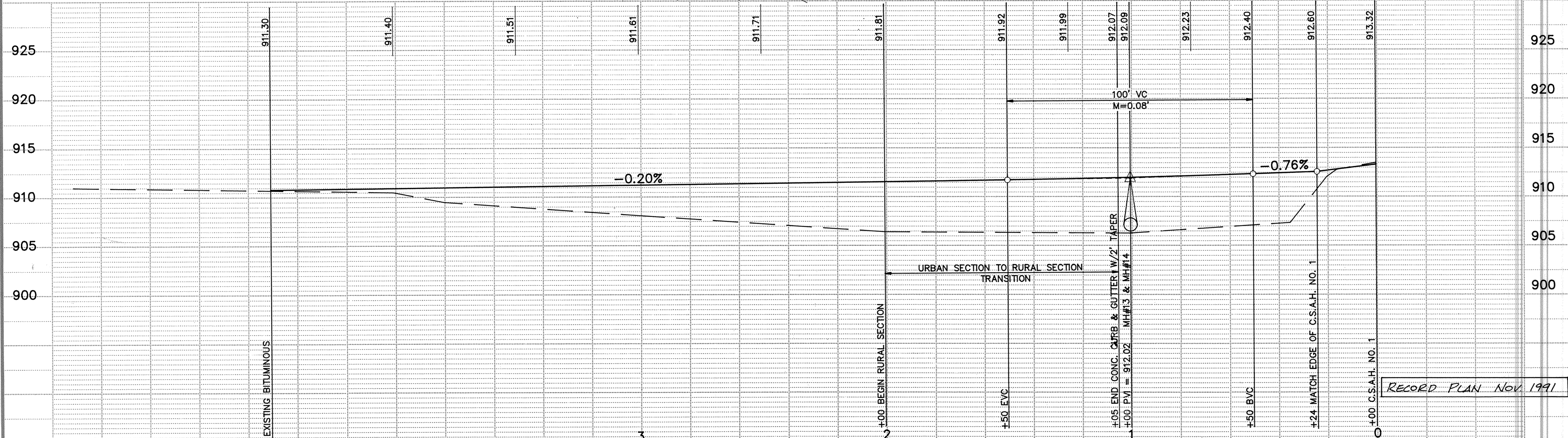
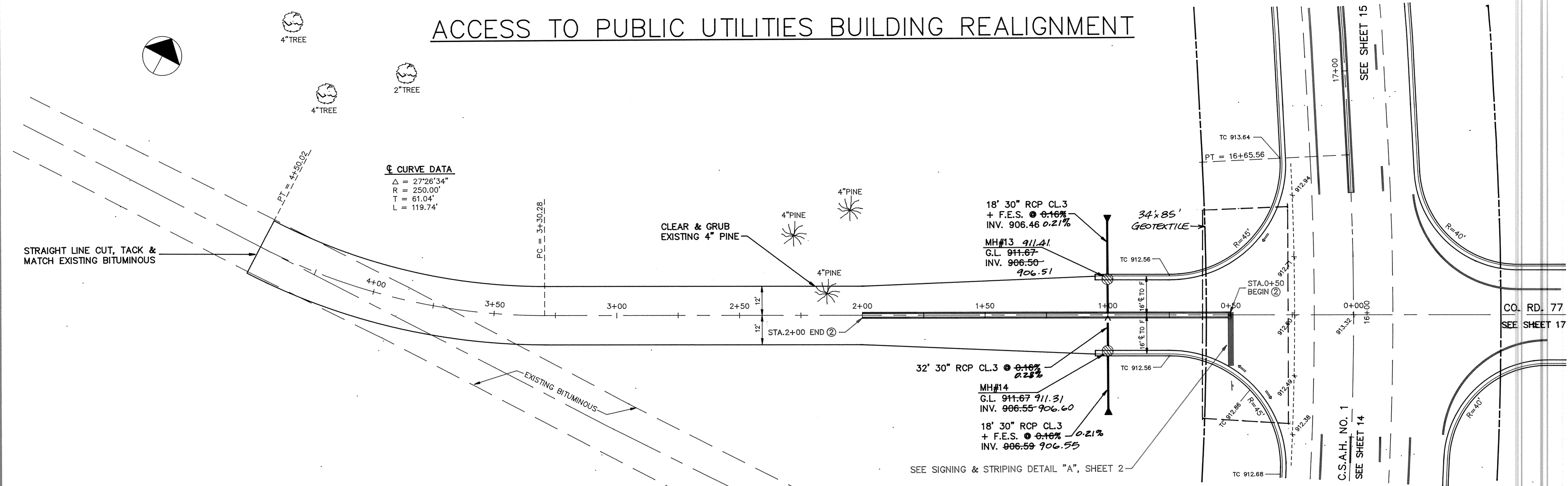


ACCESS TO PUBLIC UTILITIES BUILDING REALIGNMENT



I HEREBY CERTIFY THAT THIS PLAN, SPECIFICATION, OR REPORT WAS PREPARED BY ME OR UNDER MY DIRECT SUPERVISION AND THAT I AM A DULY REGISTERED PROFESSIONAL ENGINEER UNDER THE LAWS OF THE STATE OF MINNESOTA.

Lenny J. Manno
 DATE: 4/4/91 REG. NO. 15314

MSA CONSULTING ENGINEERS
Maier Stewart & Associates Inc.

1959 SLOAN PLACE (612) 774-6021 ST. PAUL, MINNESOTA 55117

REVISIONS	DATE	DESCRIPTION	DESIGNED	CHECKED	DRAWN
	5/28/91	CHANGED ALIGNMENT	GG	GG	GG

GRAPHIC SCALE
 ◯ HORIZ. 20'
 ◯ VERT. 5'

SHERBURNE COUNTY
STREET IMPROVEMENTS
PUBLIC UTILITIES BUILDING ACCESS
 S.A.P. 71-601-13

DATE: FEB. 1991 SHEET 18 OF 28 SHEETS PROJECT NO. 231.001

RECORD PLAN NOV. 1991

PROJECT NO. 71-601-13
 SHEET NO. 18 OF 28
 DATE: FEB. 1991
 PROJECT NO. 231.001
 SHERBURNE COUNTY
 STREET IMPROVEMENTS
 PUBLIC UTILITIES BUILDING ACCESS
 S.A.P. 71-601-13
 DESIGNER: L. J. MANNING
 CHECKER: J. J. MANNING
 DRAWN: J. J. MANNING
 DATE: FEB. 1991