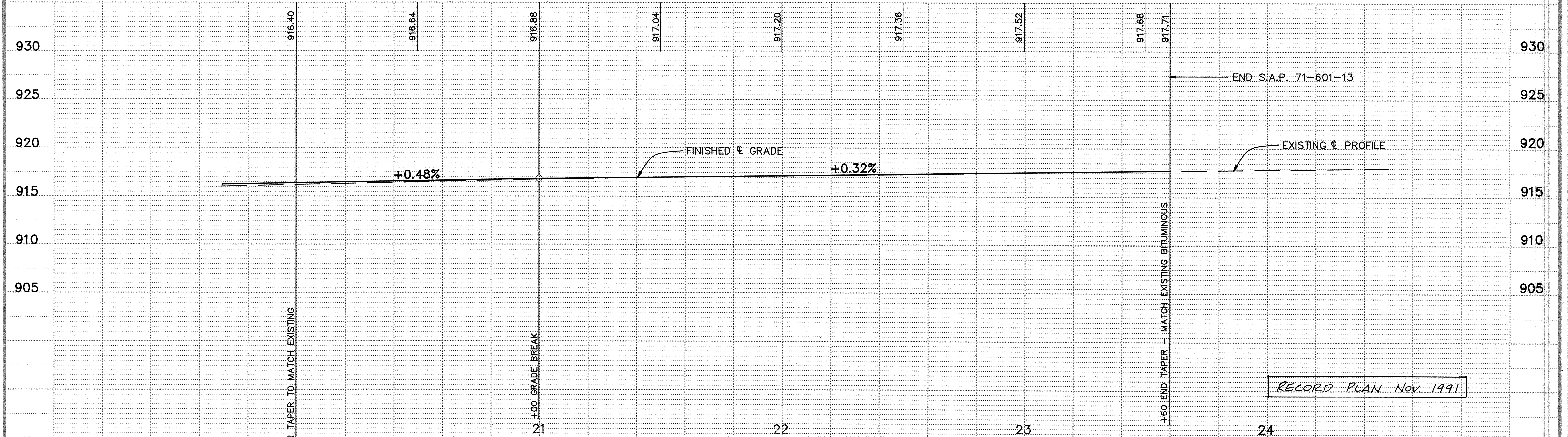
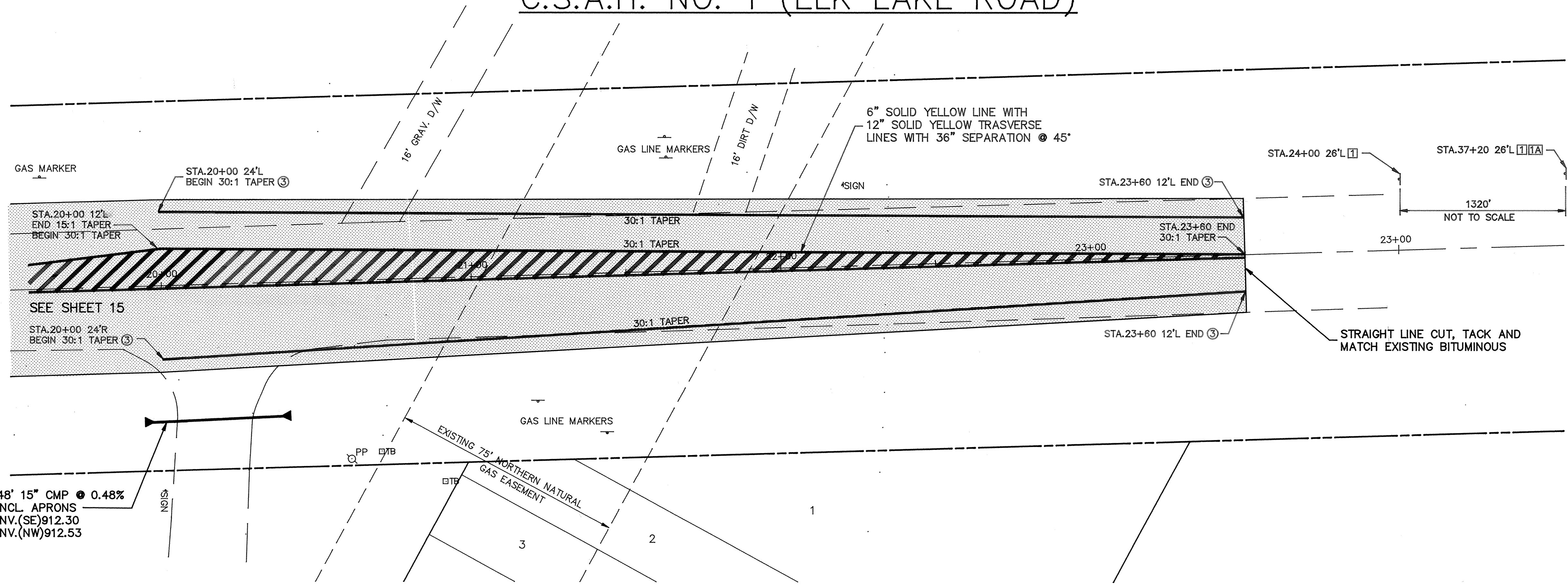
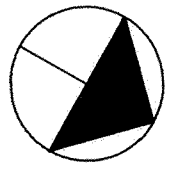


# C.S.A.H. NO. 1 (ELK LAKE ROAD)



I HEREBY CERTIFY THAT THIS PLAN, SPECIFICATION, OR REPORT WAS PREPARED BY ME OR UNDER MY DIRECT SUPERVISION AND THAT I AM A DULY REGISTERED PROFESSIONAL ENGINEER UNDER THE LAWS OF THE STATE OF MINNESOTA.

*Lenny J. Mauer*  
 DATE 3/15/91 REG. NO. 15314

**Maier Stewart & Associates Inc.**  
 CONSULTING ENGINEERS  
 1959 SLOAN PLACE (612) 774-6021 ST. PAUL, MINNESOTA 55117

DATE	DESCRIPTION	DESIGNED	CHECKED	DRAWN
		VGH	GG	GG
REVISIONS		GRAPHIC SCALE HORIZ. 20' VERT. 5'		

**SHERBURNE COUNTY**  
 STREET IMPROVEMENTS  
 C.S.A.H. NO. 1 (ELK LAKE ROAD)  
 S.A.P. 71-601-13

DATE FEB. 1991 SHEET 16 OF 28 SHEETS PROJECT NO. 231-001

DRAWING NUMBER  
 1CSAH 91  
 16  
 431